

# THE STATE PORT PILOT

A Good Newspaper In A Good Community

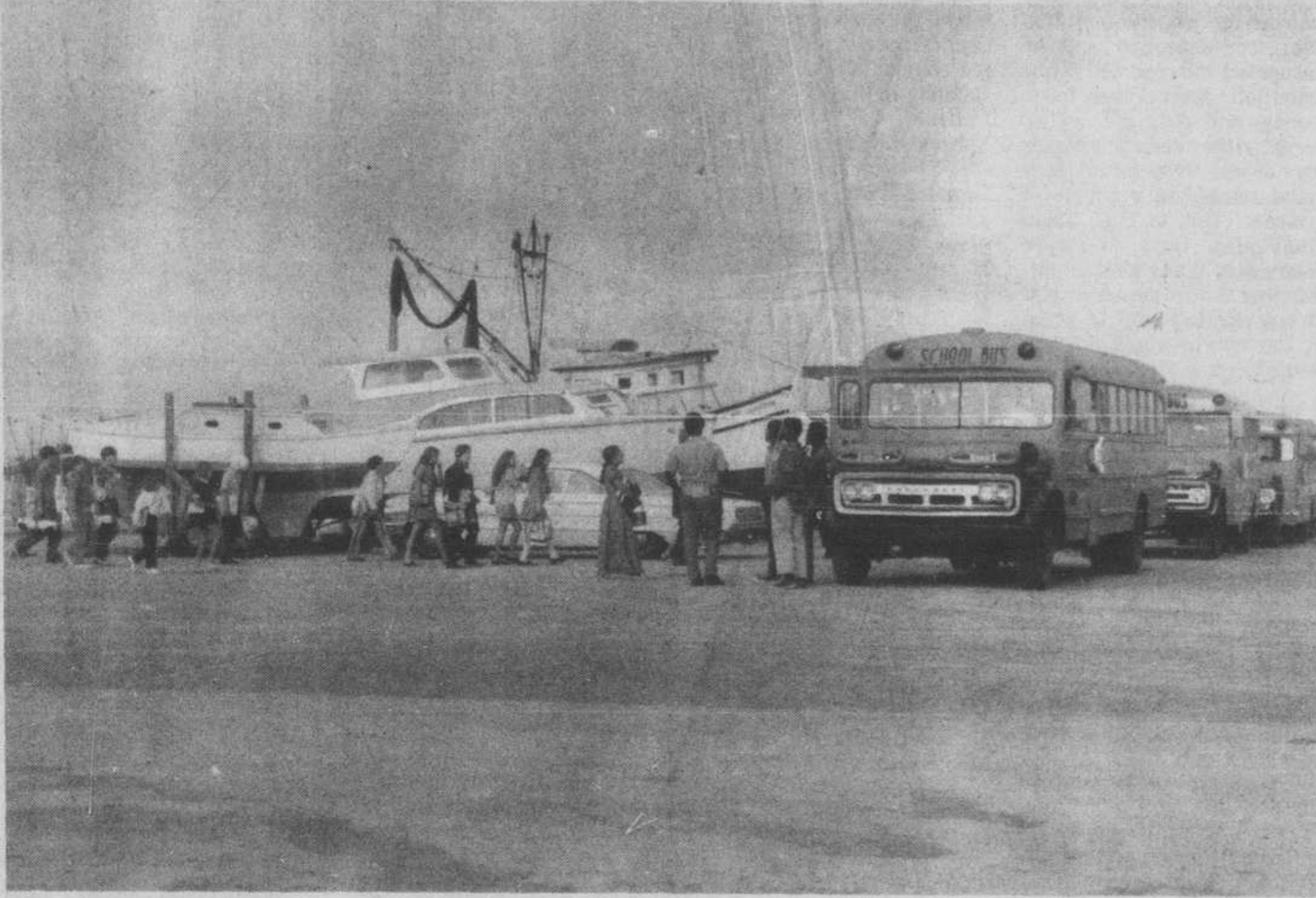
VOLUME 43 NUMBER 8

10 PAGES TODAY

WEDNESDAY, SEPTEMBER 15, 1971 THPORT, N. C.

5c A COPY

PUBLISHED EVERY WEDNESDAY



School children from Oak Island are shown here at the Southport Boat Harbor after disembarking from the ferry which transported them from Oak Island Coast Guard Station.

School buses are lined up to carry them to their respective schools. This procedure is expected to continue for several months. (Photo by Spencer).

## Island Link Restored, But Folks Not Happy

Conditions at Oak Island are about as normal as they are likely to be this week until the next stage is reached in the restoration of normal contact with the mainland. That will be the completion of a pontoon bridge at the site of the drawbridge which was completely destroyed last week when struck by a barge; and the best estimates on the completion of that project is several months from now, probably about the first of the year.

More than 200 school children are being transported daily by ferry from Oak Island Coast Guard Station to the Boat Harbor in Southport. This operation began Thursday and early this week a cover was provided to keep the rain off the passengers.

Also last week the State Highway Commission began the task of transporting the automobiles of stranded tourists to the mainland, this being done on a priority set up by the police departments at Long Beach and Yaupon Beach. By Sunday this phase was complete and vehicles owned by local people were allowed to load board the ferry slip at Fort Caswell on the grounds of the N.C. Baptist Assembly, but on the first trip Tuesday morning for two-way traffic the ferry lost control in a strong tide and smashed a portion of the temporary structure. Later in the day work was resumed on two-way traffic operation.

Southport side to go to work at Brown & Root, conditions become congested. The same process is repeated in the afternoon. There are further complications brought on by the fact that there are others who live in the beach area and must report for work in Southport.

One thing that makes this operation difficult is that nothing has been done to make the landing areas on either side of the waterway either safe or convenient. This is particularly true on the south bank with its steep, muddy sides. This means that conditions which are tolerable during emergency operations last week are now receiving much criticism, particularly in view of the fact that they probably will continue to be in use for weeks to come.

Residents of the island have criticized Governor Bob Scott for not declaring Oak Island a disaster area. They claim that had he done so government assistance would have been forthcoming in the way of manpower—probably National Guard personnel—and possibly a temporary bridge of some kind, probably from one of the branches of military service.

This pressure has been increased by the fact that Congressman Alton Lennon, State Senator S.B. Frink and Representative Thomas Harrelson all have requested Governor Scott to take this action.

The governor last week directed the State Highway Commission to move "as expeditiously as possible" to restore traffic between Oak Island and the mainland and characterized the situation as an "emergency". The SHC forces responded by bringing two ferries into use, providing ferry service for passengers across the intracoastal waterway at the bridge site and furnishing transportation for the school children. Their officials also say that work is proceeding full speed to prepare a barge for use in the construction of a pontoon-type bridge.

On the island no critical condition ever has developed, save possibly in connection with the gasoline supply. Most of the stations have sold out, even though this commodity was rationed by action of the joint boards at Yaupon Beach and Long Beach. Today (Wednesday) a barge is due to haul over a tank truck which is expected to alleviate this shortage.

Miss Jackie Herring last week organized medical forces on the island and the efforts of this group has done much to allay fears of citizens with chronic illness or with impending emergencies. Meanwhile, Chief Arthur Skipper at Oak Island Coast Guard Station had made provision for use of a fast boat to transport medical cases to Southport for transfer to the hospital. This service was used several times during the past few

keys have been mailed to bank customers. Visitors may line up for an opportunity to unlock the chest, and when they are successful they receive one of several hundred gifts which range in variety and value.

Today's brief opening ceremony was begun with the invocation by the Rev. John Dean, pastor of Southport Baptist Church. Lawrence R. Bowers, president of Waccamaw Bank & Trust Co., was here for the opening and made a few brief remarks reflecting the optimism bank officials feel about this area.

City Manager C. D. Pickersell also spoke briefly. The new bank building in Southport is an imposing, red brick structure which, was designed by Ballard, McKim and Swayer, Wilmington architects. A distinctive characteristic is the area of standing seam copper which breaks masonry lines with a building design which is typical of some of the older homes in Southport.

The grounds are impressively landscaped with formal plantings on the Moore Street side. Provision has been made for ample parking for customers and employees.

(Continued On Page Five)

(Continued On Page Five)

(Continued On Page Five)

(Continued On Page Five)

(Continued On Page Five)

(Continued On Page Five)

(Continued On Page Five)

(Continued On Page Five)

(Continued On Page Five)

(Continued On Page Five)

(Continued On Page Five)

Grand opening ceremonies are being held today (Wednesday) and tomorrow at the Waccamaw Bank & Trust Co. building in Southport. An observance on a smaller scale also is being held at the bank's drive-in at Sawdust Trail near Southport.

Lester V. Lowe, vice-president of this banking organization and manager of the Southport branch, served as master of ceremonies as Miss Sandy Allen, Miss Fourth of July, cut the ribbon to symbolize the two-day opening event.

One of the big attractions is a treasure chest for which

Complying to HEW guidelines, a Local Educational Agency shall, prior to applying for assistance under Emergency School Assistance Program, designate at least five civic or community organizations each of which shall select a member to a biracial advisory committee.

Members of the committee as submitted from these organizations is composed of the following members: James H. Bryant, Fossie Ballard, Willie Brown, Betsy W. Higgins, Melba Kirby, Dorothy Maner, Woodus Mercer, Diana Mintz, John McMillan, Franklin Randolph. Regulations state that names of committee must appear in local newspaper prior to submitting the project. The committee will meet prior to applying for assistance under ESAP.

by the AEC, Jones said "operation of the facility under existing licenses and environmental criteria leads CP&L to believe the plant should be permitted to continue to operate."

The amended AEC regulation is a result of a recent court decision which stated that the AEC, in licensing nuclear plants, can no longer rely solely on the evaluations of other govern-

(Continued On Page Five)

(Continued On Page Five)

(Continued On Page Five)

(Continued On Page Five)

(Continued On Page Five)

(Continued On Page Five)

(Continued On Page Five)

(Continued On Page Five)

## Free Protection Offered To County Equine Owners

A vaccination program against VEE will be started in Brunswick County.

The program is jointly administered by the North Carolina Department of Agriculture's Veterinary Division and the Animal Health Division, Agricultural Research Service, U.S. Department of Agriculture, says Milton Coleman, Associate Agricultural Extension Agent for Brunswick County. The U.S. Department of Agriculture will furnish the vaccine at no cost and pay participating licensed accredited veterinarians \$4 for each horse vaccinated, properly identified, and reported.

The veterinarian cannot charge the horse and mule

owner and charge USDA also.

The participating veterinarian may elect to take part in the program as a Federal Fee Basis Veterinarian by signing a Fee Basis Agreement, and he will be paid by USDA \$4 for each horse vaccinated. He cannot do any vaccinating at owner's expense once he has signed the Fee Basis Agreement. He may elect to not sign the Fee Basis Agreement and do vaccination at the owner's expense, if he so desires.

In this case, USDA will furnish the vaccine at no cost and will not pay any part of the fee for vaccination. In other words, the practicing accredited veterinarian must elect to go one of two ways: either at owner's expense or

on a Federal Fee Basis Agreement. He cannot do both. At the time of vaccination, each horse or mule vaccinated will be identified with a mane or tail tag.

If animals are already identified by registration numbers or lip tattoo, these numbers may be used. A certificate of vaccinated will be given each owner by the veterinarian at the time of vaccination.

In Brunswick County, the vaccination program will start around September 23, says Coleman. Veterinarians from neighboring counties will be doing the vaccinating.

On September 21, a meeting will be held in the Agriculture Extension Service Building in Supply to discuss encephalomyelitis. Dr. Robert Behlow, Extension Veterinarian, will discuss the Eastern, Western, and Venezuelan strains. It is planned to announce at this meeting the dates and location of clinics in the county, says Coleman. Anyone desiring additional information about the program should contact the Agriculture Extension Office.

**QUARANTINE**

All horses, ponies, and mules were quarantined to the premises on which they are located, effective September 9. As soon as they are vaccinated against VEE, the quarantine is automatically lifted and they are free to move within the state. They should be accompanied by the owner's copy of the vaccination certificate. This certificate is to be issued by the veterinarian to the owner at the time of vaccination.

The quarantine will not prohibit horse, pony, and

mule owners from carrying their animals to a veterinary clinic to get them vaccinated. People desiring to carry horses to other states should check with the State Veterinarian in state of destination to get his requirements before moving equines even though they have been vaccinated against VEE.

## New Regulation To Affect Plant

Carolina Power & Light Co. officials said today the Atomic Energy Commission's issuance of an amended regulation on compliance with the National Environmental Policy Act (NEPA) will require submission of additional environmental reports on the company's nuclear facilities at Hartsville, S.C., and at Southport.

J.A. Jones, CP&L senior vice president for engineering and operating, said a preliminary review of the AEC regulation released last Friday indicates CP&L along with other companies must file additional environmental data on all nuclear power plants for which the AEC granted construction or operating permits after January 1, 1970.

CP&L's 700,000 kilowatt Hartsville plant was placed in operation last May, while construction is about 30 per cent complete on the first of two units at Brunswick and 15 per cent on the second. A 1974 operating date is projected for the first unit, with the second to begin in 1975.

"We believe that the continued construction or operation of these plants will have no significant adverse impact on the environment," Jones said.

He explained that the AEC will be reviewing environmental considerations that were taken into account by CP&L in the planning and design of its facilities. These environmental considerations were examined in detail by competent state and federal agencies, and their comments also were taken into account by CP&L in the design and construction of its nuclear plants, Jones emphasized.

In regard to the possibility of an interim suspension of Hartsville plant operations

## Charged Slayer To Be Observed

The accused slayer of four children has been sent to a state mental hospital for examination.

Robert Atlas Johnson, a 47-year old out-of-work truck driver, is charged with the murder of four of his five children in a wooded area near Leland last Tuesday. A fifth child survived the attack and is recovering in New Hanover Memorial Hospital, Wilmington.

Judge Ray Walton ordered that Johnson be sent to the hospital for a period of observation not to exceed 60 days. The court ruling came in the early morning last Wednesday, about 14 hours after the brutal killings reportedly occurred.

Johnson, who remained calm throughout the investigation by Brunswick County, Wilmington and SBI officers, reportedly killed the children in an attempt to get his wife to come home. A call by Johnson to a Wilmington television station after the children were killed asked that his wife come back because the children were dead and he needed her.

The tragic deaths climaxed a two-month period of apparent marital troubles between Johnson and his 29-year old wife Bonnie. The troubles began, Johnson said, when his wife started working at a drive-in.

The murder scene, a wooded area near Leland in northeastern Brunswick County, was found by law officers who followed

directions from Johnson. When they arrived, two children were still breathing although one died a short while later in the Wilmington hospital.

A tire tool was used in the killings.

The preliminary hearing for the defendant was scheduled for District Court in Southport on September 27 but the order to admit Johnson to the Goldsboro hospital probably will delay the trial. James C. Bowman of Southport, a former judge who recently returned to private law practice here, was appointed to represent Johnson.

## Time And Tide

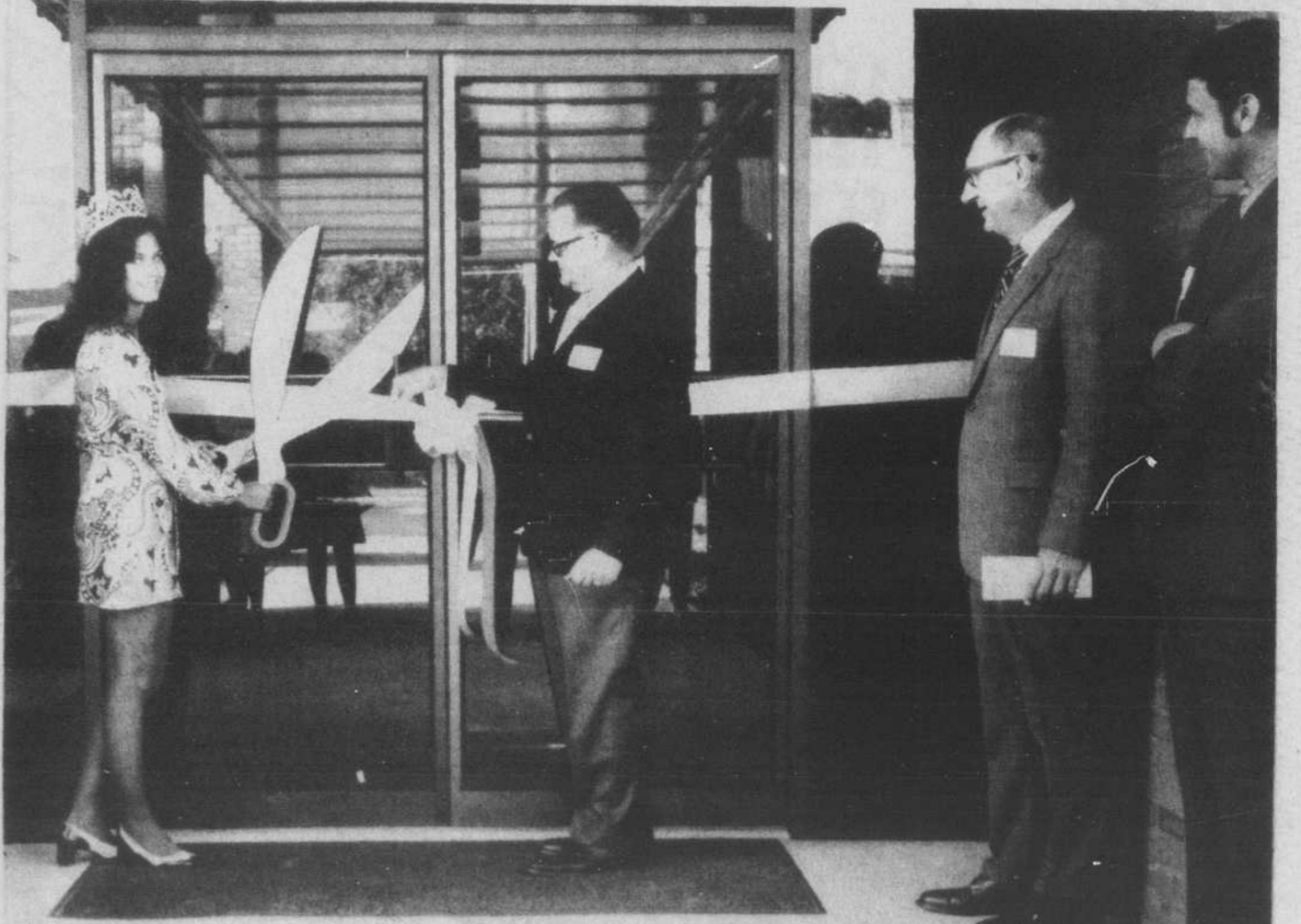
In our edition for September 16, 1936, there was a front page picture of a new silo at Hillcrest Dairy near Southport, now the Lindner Brothers Farm. Robert Jones was the manager. There was another picture, showing Elzear Howey (McAuley), Hannah and Carey Reece, all double winners in the Southport Tennis Tournament.

There was talk of holding a sailing regatta at Southport the following summer; sports fishing was good again here in the lower Cape Fear after muddy water caused by up-state rains had cleared; and although several tobacco warehouse advertisements said that prices were high and that selling was brisk, nowhere could there be found a statement of the average price being paid. Must have been pretty bad!

September 17, 1941, and the most interesting story on the front page of The Pilot that week was about a couple of youngsters who had locked themselves inside an abandoned house, then had frightened off their would-be rescuers with unearthly noises. But the story came off with a happy ending.

This might well have been dubbed "Crazy Week," for another

(Continued On Page Four)



This was the scene in Southport today (Wednesday) as Miss Sandy Allen cut the ribbon for the Grand Opening of the new Waccamaw Bank & Trust Co. building. Present for the

ceremony were President L.R. Bowers, Lester V. Lowe, manager of the Southport office, and Jackie Stephenson, Director of the Resources Development Commission. (Photo by Spencer).