

THE STATE PORT PILOT

A Good Newspaper In A Good Community

VOLUME 43 NUMBER 37

12 PAGES TODAY

SOUTHPORT, NORTH CAROLINA

APRIL 5, 1972

5 CENTS A COPY

PUBLISHED EVERY WEDNESDAY

Residents Have Two Days To Register For Primary

The number of registered voters in Brunswick County is expected to top 12,000 by the filing deadline Friday afternoon.

According to Mrs. Vivian Tatum, executive secretary of the county Board of Elections, this represents an increase of about 1,000 in the past few weeks, during which time an in-the-school registration was held and the State Board of Elections struck down a one-year residency requirement for voters in state elections.

Also, registration can be done in each of the county precincts; until last Tuesday, Brunswick County residents wanting to register had to visit the Board of Elections office-trailer in Bolivia.

The county had operated under a modified plan: the county Board of Elections office was open only three days a week and only Mrs.

Tatum could do the registering. The executive secretary will be in her office today (Thursday) and Friday until 5 p.m. to register voters for the May 6 primary election.

Precinct registrars in the Southport are Mary Dilsaver, Southport 1; Mazie Willis, Southport 2; and Stephen Farquhar, Oak

Island.

The county Board of Elections office has been rushed during the past several days.

"We've been real busy," said Mrs. Tatum, "registering 50—sometimes 75—a day. We've been so busy I haven't had time to stop and count them."

"I think it would be safe to

say we'll have 12,000 registered before we get through," she added.

The recent State Board of Elections ruling could have a tremendous impact in the Southport (and Leland) area—if the large number of industrial workers finds the time and the opportunity to register. Many of the workers, although from out-of-state, have lived in North Carolina the required 30 days.

The 30-day residency must be counted before the Friday deadline if the registrant is to vote in the May 6 primary; anyone registering later will not be allowed to vote until the general election in the fall.

Beach Groins Will Be Added

Plans for the construction of additional experimental groins at Holden Beach are now being implemented.

An advertisement for bids to construct 15 to 20 groins is to be published in the Raleigh newspaper. Sealed proposals for furnishing labor, materials, and equipment will be received by Col. George E. Pickett, Director, North Carolina Department of Natural and Economic Resources, Office of Water and Air Resources in Raleigh. The bids will be opened publicly in the Old Health Building there on May 2, at 3 p.m.

Last summer, a single experimental groin was constructed at the east end of Holden Beach. Measurements during the fall indicated that it had some effect in stabilizing the erosion being suffered at the end of N.C. State Road 1116 and by adjacent property owners where Lockwood Folly Inlet empties into the

Atlantic Ocean.

Apparently, the groins slowed the littoral flow of water along the shore as the river fans out into the ocean, as a log would serve to trap sand moving along a beach.

Altogether, approximately 950 nylon bags, 5- by 10-foot long, will be used. They will be filled hydraulically with sand in place, extending out into the ocean, the most distant being filled at low tide. The bags are stacked in pyramids, a two-bag wide base with their 10-foot lengths adjacent, bound together with a single top row.

Complete plans and specifications are available for inspection in Raleigh at the office of the Director of N.C. Department of Natural and Economic Resources, Office of Water and Air Resources; the office of Associated General Contractors; and the office of F.W. Dodge Corporation; and in Greenville at the office of the Engineer, Rivers and Associates, Inc.

Television Ad For Margaret

Margaret Harper said this week that she has some television commercials which will feature scenes of Southport. The first of these will be shown today (Wednesday) with repeats of the same sound and color presentation Thursday and Friday.

"We took a lot more footage than we are being able to use," explained the woman candidate for lieutenant governor this week. "More local scenes will be used during the last week before the primary, but I think Southport and Brunswick County people will like the scenes we show this week."

"The ads are of one-minute duration and feature a musical background. In fact, it is a sort of theme song that I hope will catch on. I have caught myself whistling it since I first heard it played. I am anxious to hear the reaction of my friends to these commercials," she said.

In Wilmington over WWAY the ads will be shown at 1:30, between 4:30 and 5:30 and at 11:30 p.m. each of the three days. Over WECT, the times for showing will be 3, between 5 and 6 and at 11:30 p.m.

The commercials will be shown on stations covering the entire state, with times in these same general periods.

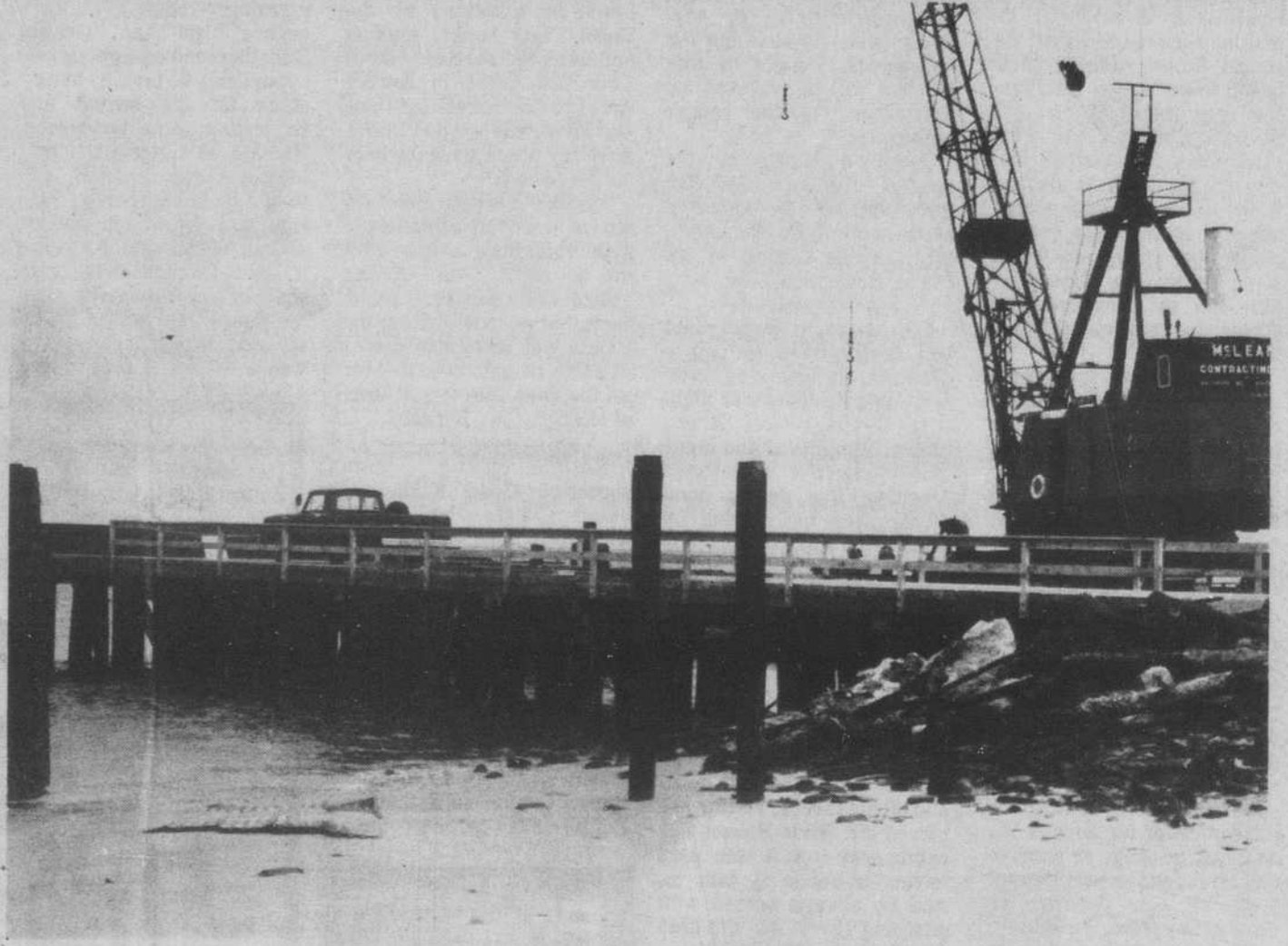
Her most extensive television coverage of the campaign will come next Wednesday night at 8:30 when she has a one-hour show over WUNC-TV in Chapel Hill. This program will be relayed to other outlets covering the entire state and will include several local persons in addition to Mrs. Harper.

Fort Caswell Pier Is Built

The construction of CP&L's nuclear plant near Southport has touched the Fort Caswell Baptist Assembly in a very benevolent way.

A new, 16-foot wide pier has been constructed to replace the old dock that visitors to the assembly across the river from Southport have long used for fishing. It will be about 18 months until the pier is left to the Baptists, however; for the next year and one-half, the landing will be used to unload the 15-foot diameter pipe that will funnel water from the CP&L discharge canal 2,000 feet offshore into the Atlantic Ocean.

Fred T. Smith, director of the Baptist assembly grounds, recalled that last September a representative of McLean Construction Company of Baltimore approached him about a lease on the old pier area and the use of the road leading to the Caswell gate. McLean, which was bidding on the discharge



A NEW PIER at Fort Caswell has been built by McLean Construction Company, to be used for about 18 months to unload the 15-foot diameter

tubing for CP&L's discharge pipe. After the project is completed, the 90-foot pier will be left, free of charge, for use by the Baptist assembly.

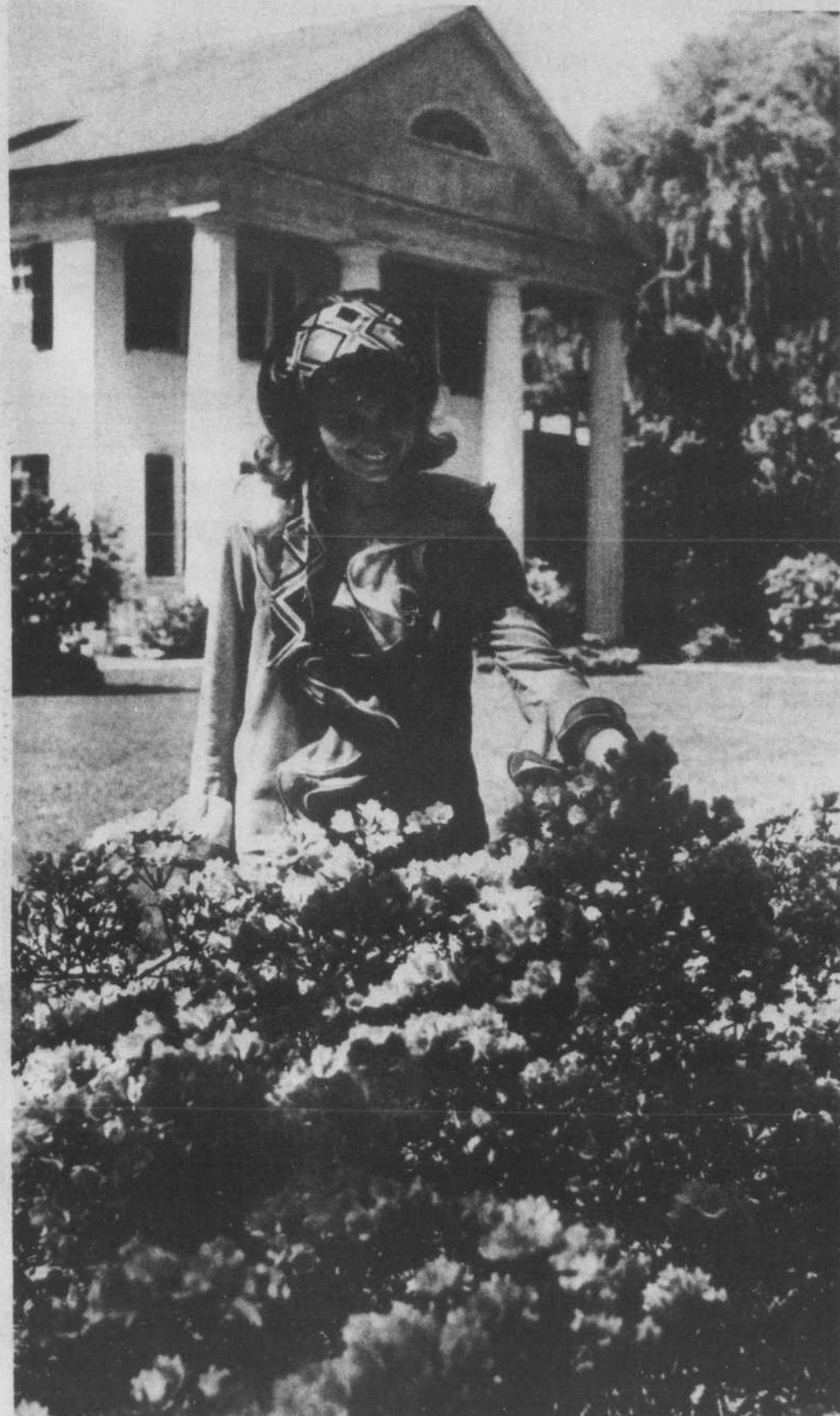
Crash Kills Ash Woman

A head-on collision near Shallotte Friday afternoon killed an Ash woman and seriously injured her sister and nephew.

Brenda Hughes, 21, of Rt. 1 Ash died shortly after the wreck, which occurred about one and one-half miles from Shallotte on US 17.

The driver of the other vehicle, Otto Collins Gause, 56, of Rt. 1 Shallotte, was charged with driving under the influence.

According to the N.C. Highway Patrol investigating trooper, the Gause vehicle



Cheryl Johnson of Long Beach, the reigning N.C. Rhododendron Queen, admires another flower native to this area—azaleas. The annual Azalea Festival is just a week away and one of the top attractions will be Orton Plantation, ten miles north of Southport on the Cape Fear River.

New Hospital May Not Require Vote On Bonds

Construction of a new, county-wide hospital "would probably be the greatest step forward this county has taken," according to Mason Anderson, chairman of an ad hoc Hospital Commission.

Anderson met with the county board of commissioners Tuesday and presented a progress report of the proposed 60-bed, approximately \$2.5 million facility. Commissioners agreed that the chances of getting the new hospital were good—perhaps even without a bond issue.

Once the county residents see the architect's drawing, said county board Chairman W.A. Kopp, Jr., the hospital plan "will go like wildfire."

The Hospital Commission, created by the county commissioners about a year ago, has presented the recommendation of a 60-bed facility to the N.C. Medical Care Commission, which Anderson said looked favorably upon the tentative plan. The next step is a financial feasibility study, which has shown that the county share of the total cost would be about \$700,000—"Fantastic," Anderson said, if it would be that little.

Other sources of revenue would be in the form of grants and an approximate \$600,000 loan to be repaid with operating revenue of the proposed hospital.

The local share (\$700,000) of the cost would either be provided through donations or general obligation bonds, and the commissioners are optimistic that the needed money could be raised without bringing the matter to a vote.

One fund-raising firm expressed the opinion that all the money could be raised through grants, the loan and the local donations, while another firm estimated that about two-thirds of the local share could be raised through donations, with the balance funded through the general obligation bonds.

"We're not talking about a

lot of money," County Manager Jerry Lewis said of the local share. For example, he explained, if \$500,000 were needed on the local level, what it would amount to in added tax would be about a nickel per hundred dollar valuation, if the money were to be repaid over the same period of time the school bond is to be repaid.

The county commissioners unanimously passed a resolution Tuesday morning stating that the county would support the soliciting of donations or present the matter to the public in a referendum, providing the

non-local funds could be secured.

Anderson, who noted that he was Democratic while the entire county board is Republican, said the hospital project is non-partisan. "I think we all are interested in seeing the county move forward."

He added that with the support of the county board of commissioners, the Hospital Commission and the public, the hospital project would be successful. Board Chairman Kopp assured the support of the commissioners:

"The hospital project won't die in the office."



Campaign Diary

By MARGARET HARPER

Before I make any report of my travels this week there are a couple of very important things I want to say.

The first is that this is the last week for registration before the May primary. When the election is over, the only thing they count is the votes. This means that unless you are registered you really cannot help me in the way I need it most, by your vote. In Brunswick County, you can register with the registrar in your own precinct. If you are not sure you are on the books, please check before Friday. Also, I want you to remember that I am a candidate in the Democratic primary, and in order to be able to vote for me on May 6 you must be registered as a Democrat.

The second thing I want to say is that I need the enthusiastic support of my homefolks if I am going to win. There is no way for me to cover the state as I feel I must do and campaign in Brunswick County at the same time. I am not taking you for granted; I simply am depending upon you for your support. It is particularly important that you talk with your friends from upstate about me. Ask them to do you a favor, to vote for the Brunswick County woman, Margaret Harper, for lieutenant governor. You will be surprised how effective this kind of help can be.

Last Wednesday was television day for me because at 7:30 a.m. I was at WNCT-Greenville for a live show called Carolina in the Morning. I had spent the night with Janice Hardison, member of the faculty at ECU, in order to make this early appointment. When this session was over, I had breakfast with my Pitt County manager, Joan Bowen, and other friends for a planning session and then headed for Washington and a meeting of Democratic Women Beaufort County. The folks from WITN-TV found out I was in town and asked me to come by their studio to tape an interview, which turned out to be two interviews.

I went home with Mary Winfield, Democratic National Committeewoman, and late in the afternoon we drove down to Mattamuskeet High School for the Hyde County rally that night. Mary presided, I spoke and all-in-all it was very pleasant experience. Here I had to put up my own posters because neither Jim nor Semi was with me.

Remember the old saying, "For want of a nail a shoe was lost, etc.?" Well, Wednesday I found myself in a similar predicament. I lost a filling and I knew I was in trouble. I was due in Monroe the middle of Thursday afternoon, so I called Dr.

(Continued On Page Seven)

(Continued On Page Seven)