

THE STATE PORT PILOT

A Good Newspaper In A Good Community

VOLUME 44 NUMBER 5 14 PAGES TODAY SOUTHPORT, NORTH CAROLINA AUGUST 23, 1972 5 CENTS A COPY PUBLISHED EVERY WEDNESDAY

\$143,000 Disbursed

County, Towns Receive Money From Sales Tax

The N.C. Department of Revenue has disbursed more than \$143,000 to Brunswick county and town governments as the local share of the penny sales tax collected during the quarter that ended June 30.

Also received this week was information that collections of the tax dropped in July, to \$47,724 from the record \$55,738 reported in June.

In the quarterly distribution, Brunswick County received \$122,009 to be applied to the 1972-73 budget. The total is nearly half of the \$250,000 the county estimated it would receive from the special levy in all four distributions during the current fiscal year.

Quarterly distributions to local governments have increased from \$76,628 to \$106,139 to \$143,660. Only the first quarter was figured in a report that identified the Brunswick economy as the fastest growing in North Carolina at three times the state average, based on collections of sales tax.

Besides the county total,

other governments receiving funds from the sales tax are: Bolling Spring Lakes, \$969; Bolivia, \$82; Holden Beach, \$1,145; Long Beach, \$7,954; Ocean Isle Beach, \$1,250; Shallotte, \$2,378; Southport, \$5,479; Sunset Beach, \$665; and Yaupon Beach, \$1,369.

The funds are distributed on an ad valorem (property

tax) basis. Long Beach receives the greatest allotment, while Southport would receive the most if the funds were distributed on a per capita basis as in some counties. Shallotte sells the greatest amount of taxable goods.

The Department of Revenue withholds 1.035

percent of the collections as its fee, this time amounting to \$1,502. The tax is applicable to goods otherwise subject to the state's three-percent levy. Of the state's 100 counties, 77 collect the local-option tax, including all counties in southeastern North Carolina.

While the July collections were more than double the amount for last October (the first month the tax was collected), the drop from June was unexpected. The collections over the past few months had increased from approximately \$34,000 in February to \$36,000 in March, \$42,000 in April, \$47,000 in May to the \$55,000 last month. The beach season was expected to keep collections at a high rate.

County FHA Head Named

Edward J. Johnson has been named supervisor of the Farmers Home Administration office in Brunswick County, replacing Parks Fields who has been transferred to Anson County. Johnson, who assumed his new duties August 7, had been assigned to Onslow County since May, 1971. Previously, he worked with an electric membership corporation in the Jacksonville area and served as assistant

agricultural extension agent in Onslow, working primarily with 4-H clubs.

The announcement of Johnson's appointment was made by James T. Johnson, state director of Farmers Home Administration. Purpose of the FHA, Johnson explained, is to lend money for homes, or farms, at rates the borrower can afford. "We make loans when other lending agencies cannot," said Johnson, emphasizing that loans are made to low to moderate-income rural residents.

The FHA has less than two-percent delinquency in payments, however.

The organization is described by Johnson as "the lending arm of the Department of Agriculture." As supervisor, Johnson will handle all loans granted in Brunswick County by FHA.

He said the amount of office work is great and he has only one day (Monday) he is scheduled to be in the office, but added that works through appointments, also.

On a recent tour of the county, Johnson noted that the area "is in dire need of improved housing." FHA, he noted, is financing about 10 to 15 homes now under construction in Brunswick County.

FHA also loans money for the purchase of small farms, and is assisting with the Yaupon Beach and Brunswick County water system financing.

Johnson, a native of

City Board Aids Airport

The Southport Board of Aldermen met week before last with Mayor Pro-Tem Harold Aldridge presiding.

In a routine business session, the board approved the rezoning of property known as Ocean Trail Rest Home from R1 to R2.

A motion was made and seconded that the application for N.C. state aid in the control of mosquitoes be approved and that the city manager be authorized to sign the necessary papers.

A request for a building permit from Watts Charter Boats to construct a building on the yacht basin was approved, subject to the old building now being used being removed after completion of the new one.

A motion was unanimously carried that Mrs. Clifton White and George W. Parker be reappointed to the recreation committee for terms of three years.

The city auditor notified the board that it would be necessary to appoint three members to the Board of Adjustments at the regular meeting in September.

A motion was passed that the mayor and clerk be authorized to sign a lease agreement between the International Longshoremen Association No. 1838 and the City of Southport for property located on Owens and Lord Street, known as lots 1-2-3-4 of Smith and Weeks Addition.

A motion was passed that the mayor and city manager notify the recreation committee to operate the program subject to strict conformity of the building and grounds lease agreement.

A motion was approved that the request made in the resolution received from the Local Airport Commission for the city to approve in its 1973-74 budget the sum of \$375 for airport maintenance, be approved.

Time and Tide

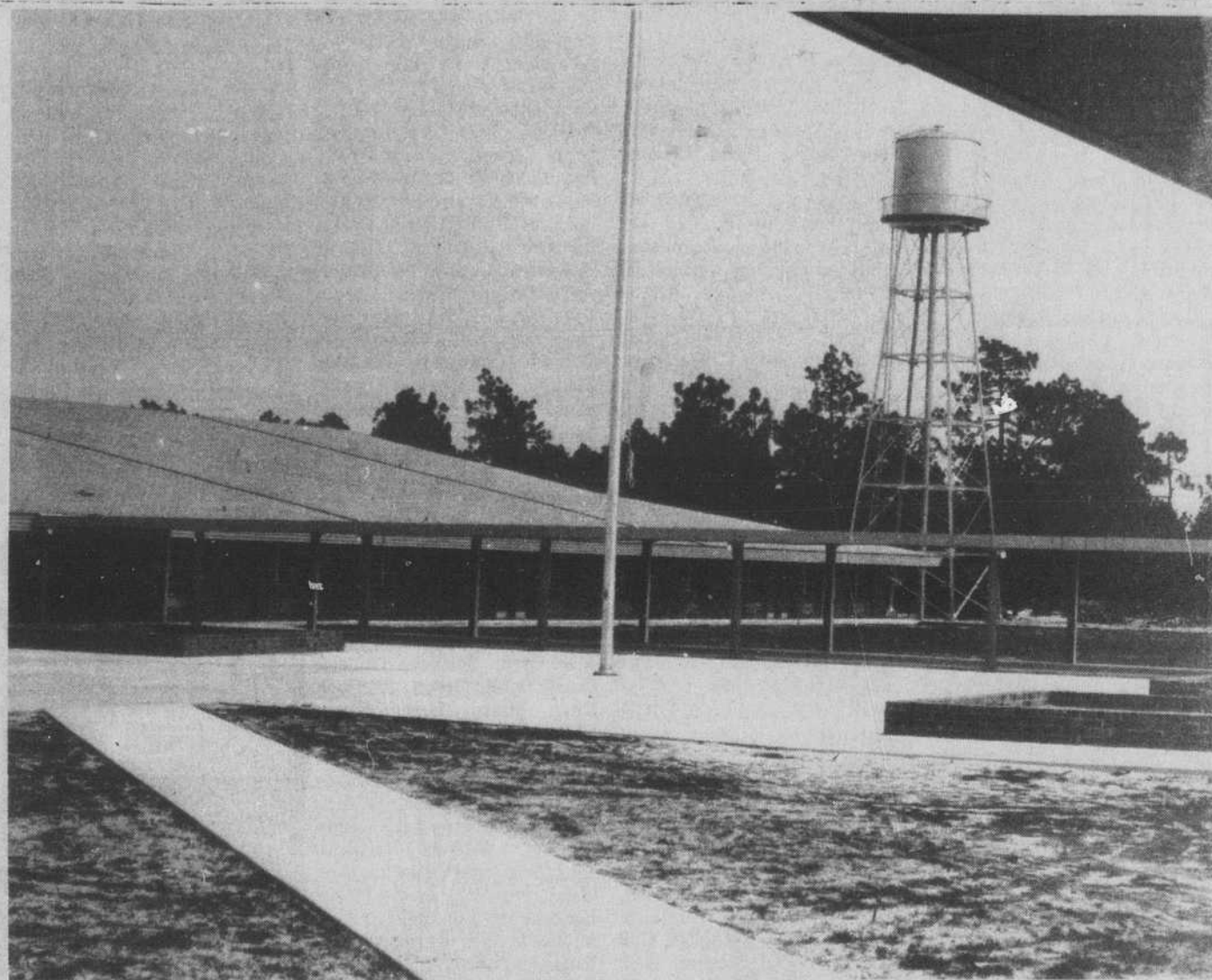
Thirty-five years ago this week a large picture of the 427th Company CCC at Southport, a total of 160 men, appeared in a front-page photo. Many of the men in the picture now reside in Brunswick County.

A tugboat and barge ran aground on Frying Pan Shoals. The tug and its tow were returning to New York after delivering a cargo of oil to Wilmington. At that point, the shoals were not navigable by any vessel drawing more than nine feet of water. The tug drew 12 feet and the barge 13. As of presstime, both were still grounded after 48 hours and the tug was leaking as a result of the pounding surf.

Big gamefish were being hooked by parties from Southport; the county tax rate was to be \$1.75; and school opened August 21.

Thirty years ago this week, Judge E.H. Cranmer of Southport died at the age of 71. Judge Cranmer had been a member of the N.C. Bar Association since 1900 and was

(Continued on Page 4)



SCHOOL OPENS in Brunswick County next Thursday, and students in the Southport and Bolivia area will be attending the new South

Brunswick High School. Personnel are busy readying the school, which is one of three new consolidated schools in Brunswick County.

State Deposits \$50,000

Yaupon To Add Groins To Halt Beach Erosion

The Yaupon Beach Board of Commissioners held its regular monthly meeting at the town hall August 7 with Mayor Clarence Murphy presiding and Commissioners Frank Aman, Gibson Barbee, Jr., and William McDougle present.

The financial statements for the general fund, Powell fund and erosion fund were read and approved, but Town Clerk Marsha Stone explained that she did not have time to get the water system financial statement prepared because of several returned checks.

The 1972-73 budget was approved as presented.

Commissioner McDougle reported on a generator which was available through Civil Defense. It reportedly will be large enough to provide additional power to the Methodist Church for lighting and cooking facilities when the church is used as a shelter, as well as operate the water system pumps, light the city hall and operate radio communication equipment.

A resolution was approved to request the F.H.A. to release the balance of the town water works funds. \$17,000 is to be put in an interest paying account to help to pay interest on the water works bonds, and another \$500 can be used to add services.

The board approved the hiring of Lucille Laster on a part-time basis to handle the water system accounts. She was hired and for a 20-hour work week at \$2.25 per hour. Mayor Murphy read a letter or resignation from

Commissioner Clyde F. (Jackie) Herring, who wanted to resign as soon as possible. The board approved her resignation as of August 7, and will vote on a replacement for Commissioner Herring at the September meeting to complete her unexpired term until November, 1973.

A resolution was approved

to continue with the state mosquito control policy.

Mayor Murphy suggested the board consider an ordinance on "no peddling," "abandoned cars," and "motor homes parked in the back yards, but they cannot be occupied."

He suggested the board contact the town attorney and

(Continued on Page 4)

Bank Opens Office Today

Bank of North Carolina will open its new office building in Shallotte Thursday.

Participating in the dedication ceremonies will be J. Hugh Rich, president, and W. Carroll Bryan, chairman of the board of directors. Others taking part in the event will be Shallotte Mayor Beamon Hewett, Brunswick County Board of Commissioners Chairman William Kopp, and the Rev. Iven Hughes, pastor of Beulah Baptist Church.

Staff members of the Shallotte office will be Letha Bowen, Patricia Sullivan, Catherine Benton, Frances Rourk, Kirk Brown, and Manager Richard Glenn.

Construction of the Shallotte office was based on economic studies of the area, says Glenn.

The bank system, which celebrates its 20th birthday in October, is listed among the nation's 300 largest banks, and was the second fastest growing bank in the country in 1971, when it entered the top two percent of the 14,000 banks in the nation.

In less than 20 years, Bank of North Carolina has grown from \$150,000 in capital to its present worth of \$300 million.

Board Stands By Dune Law

Permission to lower a sand dune so he can see the ocean has been denied a Sunset Beach man by the Brunswick County board of commissioners.

In rejecting the request, commissioners cited general statutes that give counties the authority to protect dunes less than 15 feet above sea level. To grant permission, Board Chairman William Kopp noted, would be "to open the floodgates," endangering not only the man's property but that of landowners behind him.

The request, brought to the board's attention by Shoreline Protection Officer Ed Clemmons, was from a man who owned a cottage on the front row of the Brunswick County beach. He reportedly lived upstairs, but decided to renovate the downstairs and move his residence, leaving the upstairs available for rent. Height of the dunes in question, Clemmons noted, was 16½ feet.

"I told him I could give him permission to lower the dune to the general contour of dunes in the area (10 feet), but the man said that wouldn't do him any good." The commissioners seemed against lowering the dunes any below 15 feet.

Kopp noted that the purpose of the state protecting dunes was to protect against tropical storm damage and to help stop sand erosion. On Caswell Beach, contractors have leveled dunes to construct the CP&L discharge, but have agreed to have the dunes rebuilt within six hours in case of an approaching storm.

After the project is com-

pleted at Caswell, the dunes will be replaced and sodded, commissioners noted.

Also involved in the matter of dune protection is an unidentified man at Sunset Beach in violation of the county law. Clemmons reported that the man has agreed to comply with the county regulation, but County Manager Jerry Lewis told the commissioners he is having blank warrants drawn in case of further violations of the legislation.

Bank Supports Leland Library

The Leland community is preparing to open the doors of its first Public Library.

Mrs. A.P. Henry of Winabow, past president of Friends of the Library in Brunswick County, said a 20 by 50-foot frame structure has been donated to the town by Waccamaw Bank and Trust Company.

The building is the old Waccamaw Bank office in Leland, moved from its former location US 74-76 to a site on the grounds of Leland Elementary School. Through the Friends of the Library, the town has obtained a one-dollar leaf compliments of the Brunswick County Board of Education.

In addition to donating the building, the Bank also gave \$300 towards the cost of moving it. Paul Ganey, manager of the Waccamaw branch office in Leland, said that plans to donate the

building were formulated several years ago when the Bank first decided to relocate.

"The bank took it on itself to offer the building as a donation," he said.

Mrs. Henry said, "We've been looking forward to this ever since we knew they were going to build. Our aim has always been a branch library in Leland."

A volunteer effort has been launched to furnish the building and provide shelves. Books, periodicals, and materials will be supplied by the Southport-Brunswick County Public Library. No librarian has yet been hired but the Brunswick County commissioners approved a salary request recently.

Leland members of the Friends of the Library are: Mr. and Mrs. J.D. Long, Mrs. Bessie Sullivan, and Mrs. Catherine Skipper.

For Southport

Local Citizen Suggests Flag

One local citizen thinks there should be an official flag for the City of Southport, to be flown by patriotic citizens in company with their United States flag and North Carolina state flag.

He is Capt. John G. Swan, who not only suggests the idea, but comes up with what he believes might be an acceptable color combination.

Here is the text of his letter making the suggestion:

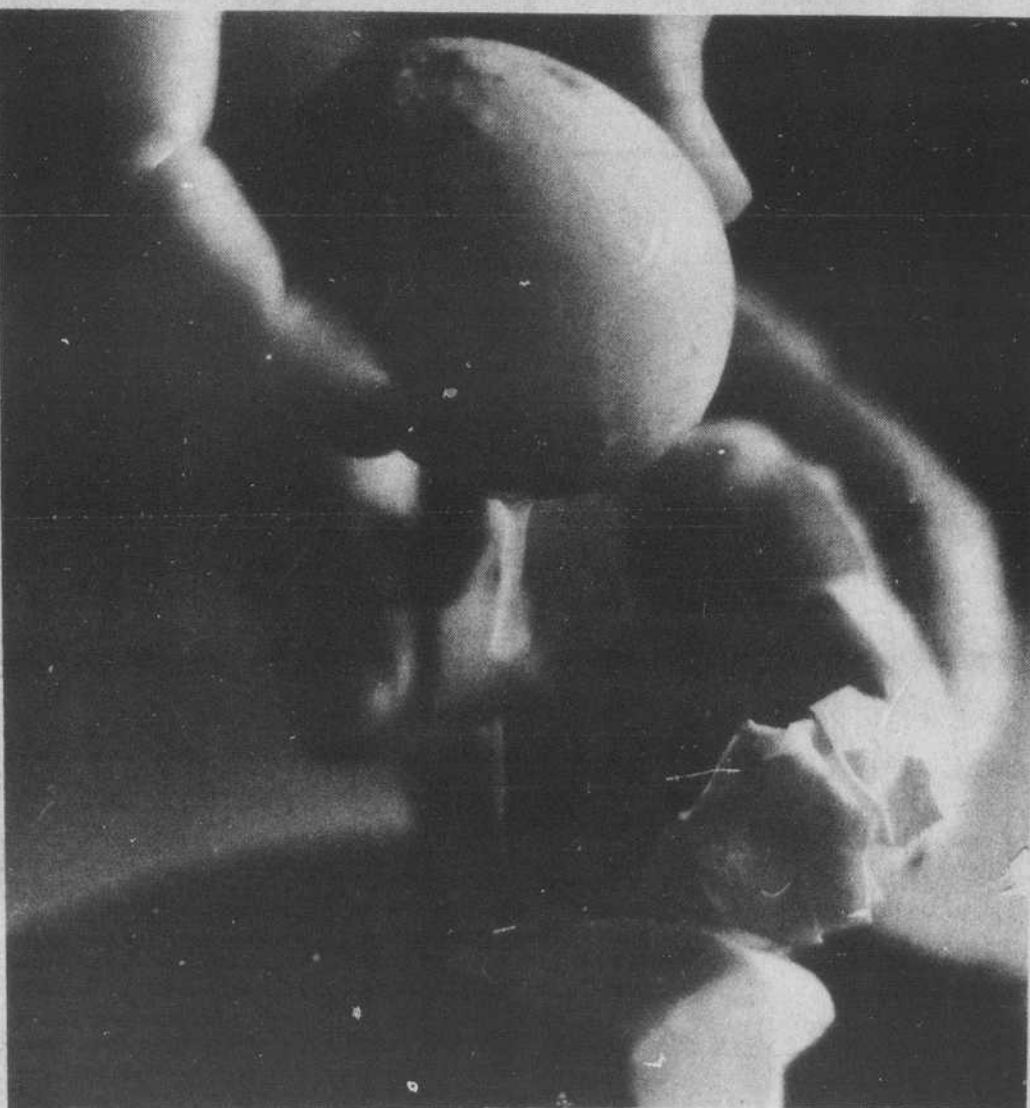
"I have been thinking how nice it would be if the people of our great but small city of Southport would adopt a flag for our community. You can notice many of our citizens have flag poles in their yards and most of them are flying

the American flag and N.C. state flag.

"I think it would be a wonderful sight to see a city flag flying with our country's flag at city hall and also on the other flag poles in Southport. I am sure many of our citizens would purchase these flags.

"If we have some made to suit our city, I would suggest the people of Southport have the opportunity to give their ideas as to what design would fit our city best. Someone like Mrs. Betty Leggett or Mrs. Toni Oliver, or other artists, could draw up what they think would make an ap-

(Continued on Page 4)



AN EGG WITHIN AN EGG has been found for the third time in recent months on the farm of Mrs. Fred Stevens near Southport. Double yolks are not uncommon and Mrs. Stevens reports that she's seen triple-yolk eggs, but has never heard of the egg-within-an-egg before. The outer shell is larger than usual and also contains a yolk, while the inner egg is formed like a "normal" egg.