

THE STATE PORT PILOT

A Good Newspaper In A Good Community

VOLUME 46 NUMBER 7

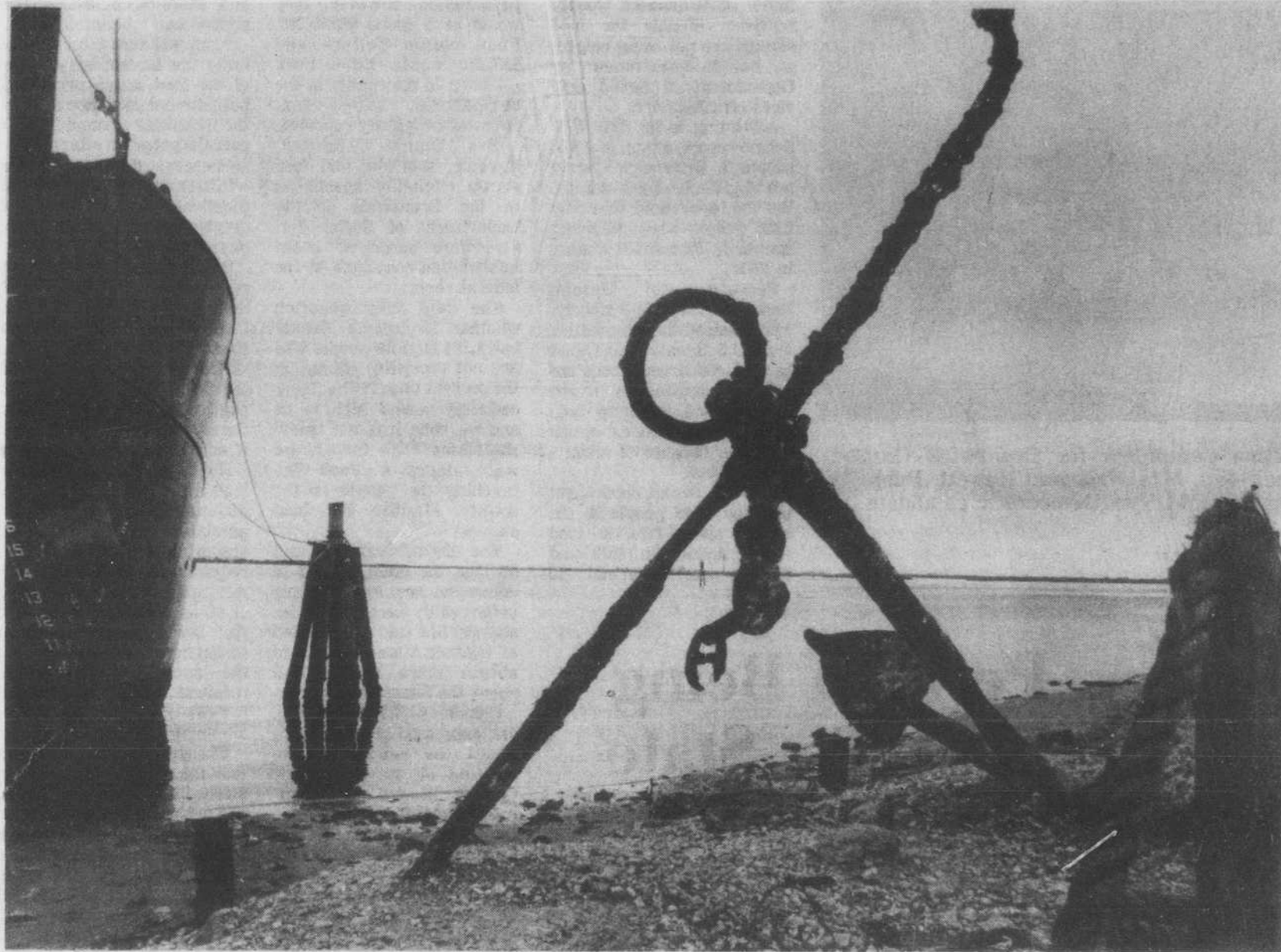
22 PAGES TODAY

SOUTHPORT, NORTH CAROLINA

SEPTEMBER 4, 1974

10 CENTS A COPY

PUBLISHED EVERY WEDNESDAY



ON THE SOUTHPORT waterfront is the Fry Pan Lightship and nobody who comes to town misses the nautical museum. But there are niceties that most folks might overlook, like the

rustic ship's anchor, the tattered rope, the calm waters of the Cape Fear.

Board Reviews Proposal

County Zoning To Be Initiated

By BOBBY HILL

The county commissioners Tuesday took preliminary steps to establish a county planning board. An ordinance authorizing the board and appointing members is expected to be moved on by the commissioners at their next meeting September 16.

The proposed nine-member advisory board would be required to submit to the commissioners a comprehensive land-use plan by July 1, 1975. This would meet deadline requirements for federal flood insurance.

Zoning and subdivision ordinances recommended by the planning board would have to be approved by the commissioners before being officially adopted.

Commission chairman

William A. Kopp, Jr., and County Manager Neil Mallory said they envisioned the board working in conjunction with a professional planner to help draw development guidelines for the state Coastal Area Management Act.

Kopp raised several reservations about certain portions of the proposed ordinance. "I want to have it (the questions) checked out before we adopt this," he said.

Mallory replied the ordinance was a model with minor adjustments recommended by the Institute of Government in Chapel Hill. The manager said he would check the questioned areas with the institute.

Kopp questioned whether

the board, as authorized in the proposed ordinance, should be allowed to "erect monuments," or to go on personal property for planning purposes. Kopp said the board should be paid per diem to assure adequate attendance.

The planning board, Kopp said, should not be allowed to accept donations from private sources, a practice permitted by the proposed ordinance. Kopp said this procedure could lead to influence in zoning considerations being bought by developers.

Commissioner William Smith suggested that private contributions to the planning group could be given to the commissioners and ear-

(Continued on page 3)

College Program To Start Monday

A fully-accredited college parallel program begins next week at three locations in Brunswick County, culminating several months of cooperative effort and planning by Southeastern Community College and the Brunswick County Board of Education.

The locations are South Brunswick High School, with classes beginning Sept. 9; West Brunswick High School, with classes beginning Sept. 10; and North Brunswick High School, with classes

beginning Sept. 14. The Piney Grove School will be used for a reading laboratory for students enrolling in freshman English.

Classes at South Brunswick and West Brunswick will be held on week nights, and classes at North Brunswick will be held on Saturday mornings. The reading labs at Piney Grove will be on Thursday nights and Saturday mornings.

Mrs. May W. Barbee of Yaupon Beach is coordinator of the program. Prospective

students can get in touch with her for additional information and assistance by calling Southport (457-5765) or Bolivia (253-5231 or 253-5232).

The courses offer college credit, and the credits are transferable to a senior (four-year) institution of the student's choice. This is explained in a letter from Dr. Richard A. Paulsen, academic dean at Southeastern, to persons who responded to recent questionnaires.

School Enrollment Up

The number of students attending public schools in Brunswick County has increased to 7,608 this week, Supt. Ralph King announced Tuesday.

Current figures, King said, show that Brunswick County has 7,229 students in grades one through twelve and 379 in kindergarten.

Last year, Brunswick County had 7,010 students in grades one through twelve and 247 in kindergarten.

Dr. Paulsen outlined the classes to be offered at the Brunswick County locations, as follows: at South Brunswick High — Introduction to Business; Freshman

(Continued on page 7)

Officials Answer Reports

School Fees Unchanged From 1973-'74 Amounts

By BILL ALLEN

Fees paid by students attending Brunswick County public schools range from a minimum of \$4.50 to a possible maximum of \$41, according to information provided by Board of Education officials.

Students in kindergarten through the eighth grade

must pay a minimum total of \$5.50 in fees. High school fees range from \$4.50 to \$41, depending on the courses taken.

The minimum fees paid by students do not include the optional insurance, which cost \$4 a year. The insurance would make the kindergarten through the eighth grade

minimum \$9.50 and the high school minimum \$8.50.

Brunswick County school officials do not include insurance in the minimum because it is optional. However, Associate Supt. Robert C. Elkins estimated that 70 percent of the students in county schools take out the insurance.

Despite inflation, the fees charged Brunswick County students are the same as charged last year.

The Pilot looked into the fees charged students to attend Brunswick County schools after several parents complained about the high charges they were being forced to pay. One parent said the fees charged students to attend public schools in Brunswick County were "ridiculous because the schools are supported by taxpayers."

Supt. Ralph King said the Board of Education is working to eliminate basic instructional fees and reduce others. He expressed hope that the board can take action on the matter before schools open for the 1975-76 term.

"We discussed eliminating some of the fees this year but, due to the current needs of individual programs, did not take action," Supt. King stated.

He said the board would never be able to eliminate or reduce all fees because some are state fees such as Future Farmers of America and Future Homemakers of America dues. Both organizations charge \$2.50 in dues each year.

Supt. King pointed out that fees charged students do not include book rentals. The state eliminated the book rental fees several years ago. Associate Supt. Elkins said

(Continued on page 7)

Unique Shallotte Home Being 'Antique Recycled'

By BILL ALLEN

An unusual house under construction outside Shallotte is already attracting a large number of visitors because of its uniqueness.

The visitors, who include the curious architects, contractors and interested people, turn off Holden Beach road onto a dirt "U"-shaped drive. They usually pause a second or two at a saw mill to ask directions. Since it is difficult to hear above the noise of the saw mill, one of the two workers will point in the direction of the house.

After viewing the house and asking a question or two, the visitors' car circles out the drive and heads back toward the Holden Beach road without looking back at the workmen still sawing lumber.

Most leave with unanswered questions because the story about the house under construction is almost unbelievable!

They could have had their questions answered if they had stopped at the saw mill. The two workers operating

the mill are the owners — Mr. and Mrs. William Kibler, a retired Virginia couple who moved to Brunswick County last year.

'ANTIQUED RECYCLED'

Mr. and Mrs. Kibler — believing that one man's junk is another man's riches — are building the unique, "antique recycled" home. It is believed to be one of the most novel homes ever constructed.

The large two-story home, which will contain a total of 23 rooms and over 10,000 square feet of floor space, has attracted attention because of the materials being used.

Mr. and Mrs. Kibler gathered the old building materials from structures being torn down to construct their dream house. Most of the antique materials, which are between 100 and 200 years old, were found in the Norfolk-Virginia Beach area.

In fact, the only new material used to construct the house are the pecan walls in the library. Mr. and Mrs. Kibler purchased 100 dining room tables and used the

wood for the walls in the room.

Kibler drove 28,000 miles and made 41 trips to the Norfolk area to transport the materials in a 10-ton van to the site of the house. The 140 large beams used in the construction had to be transported to Brunswick County by railroad. Cranes had to be used to load and unload the large beams on gondola cars. Kibler picked up the beams at the Navassa station and transported them to the site.

Mr. and Mrs. Kibler started construction of the house last November.

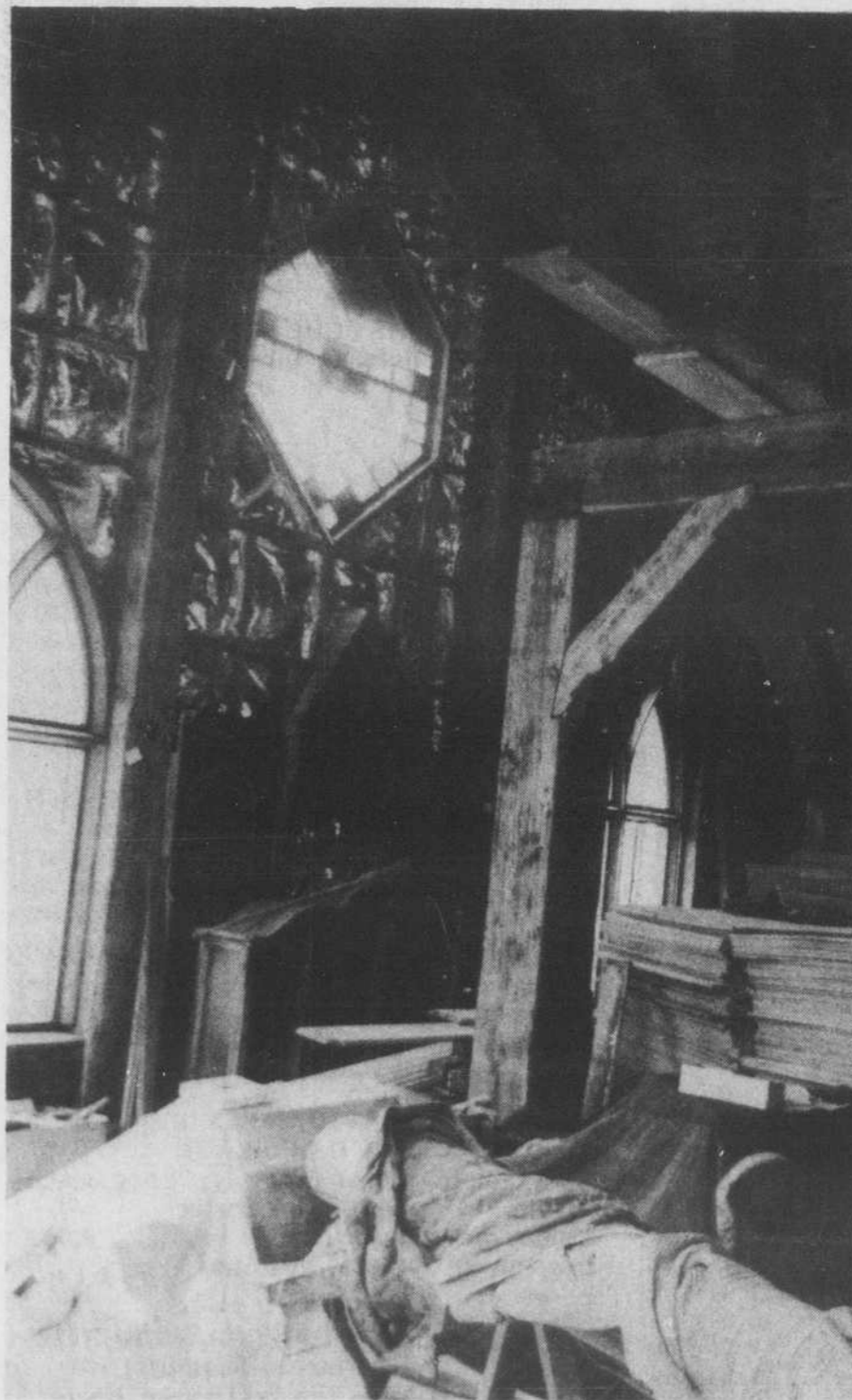
18 MONTHS MORE TO GO

They estimate it will take about 18 more months to finish the house. They reported that three-fourths of the house is under roof at the present time.

Mr. and Mrs. Kibler are actually helping build the house themselves with contractor Frank Coleman of Holden Beach and his small crew.

After drawing up the floor plans, making a scale model

(Continued on page 11)



An antique recycled home is being built outside Shallotte by Mr. and Mrs. William Kibler, who recently moved here from Virginia. The Spanish Colonial home will have 23 rooms and over 10,000 square feet of floor space.

Court Term

A session of Superior Court will be held in Southport next week with Judge Harry E. Canady presiding.

A total of 88 cases are docketed to be tried Monday, Tuesday, Wednesday and Thursday. In addition, the Grand Jury is scheduled to hear evidence in 47 other cases.