

# THE STATE PORT PILOT

A Good Newspaper In A Good Community

VOLUME 46 NUMBER 10

20 PAGES TODAY

SOUTHPORT, NORTH CAROLINA

SEPTEMBER 25, 1974

10 CENTS A COPY

PUBLISHED EVERY WEDNESDAY

## Dual-Hospital Plan Proposed To County Board

A way to "achieve what both parties want and still provide the best of medical facilities for the county" has been proposed to the Brunswick County Board of Commissioners.

Southport Mayor Eugene B. Tomlinson, in a letter to the commission chairman, calls for city-county cooperation in working for two 40-bed hospitals under a single administration. The "united front" effort, which Tomlinson said would eliminate a threatened injunction against the planned county hospital, was discussed at a special Friday night meeting of Southport Aldermen.

The registered letter to county board Chairman William A. Kopp, Jr., was mailed Monday.

Members of the Doshier Memorial Hospital Retention Committee were in Raleigh last Thursday for a meeting with David T. Flaherty, secretary of the state Department of Human Resources. From the meeting, Tomlinson said in his letter to Kopp, "we conclude that a two-hospital approval for Brunswick County is not beyond the realm of probability and feasibility" if the city and the county work together.

"Leaving all other considerations aside," the letter continued, "we believe the county can support such a concept financially and it would provide first-class hospital care for the majority of our people."

Tomlinson said committee members were "agreeably surprised" to be able to present to Flaherty the Doshier side of the county hospital situation.

"MAGIC FORMULA" NOT RIGID  
In a round-table discussion Friday night, the Southport mayor noted the "magic formula" by which the number of allotted hospital beds is determined is not inflexible. The county is said to have a 60-bed limit, which is proposed to be used by the Brunswick County Memorial facility near Supply.

The letter to Kopp states that "hospital units in multiples of 40 beds are considered desirable. Based on this, we pursued the idea of having two 40-bed, acute-care hospitals approved on the basis of widespread population centers."

In the event the two 40-bed hospital plan fails to gain county support, the Board of Aldermen

Friday night introduced action for a "time-phase plan" aimed at meeting Doshier Hospital deficiencies and keeping certification.

"Doshier now has the certification for a hospital in Brunswick County and no other hospital can be certified as long as there is a certification in existence for a hospital," Tomlinson told the group Friday night. The "time-phase" plan would show appropriate state agencies "this is where the money's coming from" to update and maintain Doshier.

Present at the meeting were Southport Aldermen, Retention Committee members Rosetta Short and Ellis Dudley of Long Beach and Southport physician Norman Hornstein.

EMERGENCY STATUS "A FARCE"

Hornstein said that of six doctors now practicing in Southport "five would almost certainly leave if this hospital (Doshier) was closed down." He described the proposed emergency-room status of Doshier as "a farce," said it would take three or four physicians to staff the unit and claimed he wouldn't have the job for \$50,000.

Hornstein was pessimistic about a 60-bed

hospital in the Supply area. He predicted the facility would be bankrupt in two years because there would be "not enough medical staff to staff it."

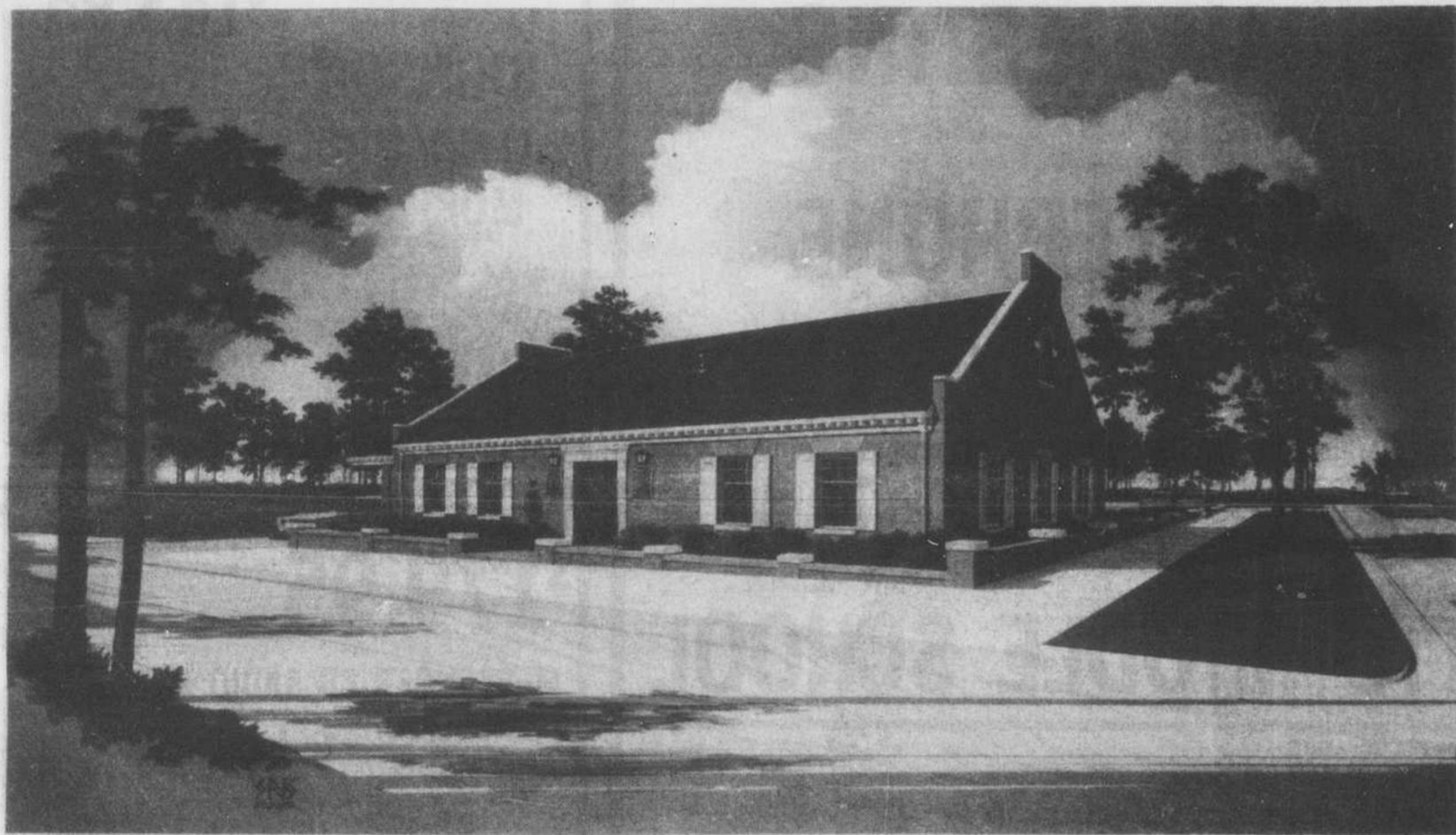
Alderman Robert Howard noted the economic advantage of having two 40-bed units 80 to 85 percent full rather than a 60-bed unit 40 to 50 percent full.

He said previous decisions pertaining to hospitals in Brunswick County have been based on "almost erroneous" information about population. The 1970 census shows a Long Beach population of about 500; Powell Bill funding released this week is based on a population of more than 4,400.

It was frequently noted that Columbus County, despite a population decrease according to the '70 census, has been granted 19 addition beds to round-off the total at 160. Also in support of the argument, Hornstein cited an industrial development map showing future business clustered along the Cape Fear River.

"MEET EVERYBODY'S NEEDS"

(Continued On Page 18)



AN ARTIST RENDERING shows the new office of Peoples Savings and Loan Association now under construction on the southwest corner of Howe and Nash streets in Southport,

diagonally across from the Baptist church. Association spokesmen say that approximately eight months will be required for completion.

### Full Time To Campaign

## McCracken Acting Chief As Strong Takes Leave

Assistant Chief George McCracken has been named acting chief of the Southport Police Department, replacing Chief Herman Strong who has been granted a leave of absence.

Strong requested that he be granted the leave of absence and that McCracken be named acting chief in a letter to the Board of Aldermen. The board approved both requests Friday night.

Strong said he wanted a leave of absence from

Thursday, September 26, until November 6 in order to devote more time to his campaign for sheriff of Brunswick County. He is the Democratic candidate for sheriff in the fall general election.

"The reason I requested the leave of absence was that I didn't want to have a conflict of interest between serving as police chief of Southport and being a candidate for sheriff of Brunswick County," Chief Strong

told The Pilot this week. Strong has been head of the Southport Police Department for almost two years. He also held the post from 1969 until 1967.

Acting Chief McCracken, the first black to head the Southport Police Department, has served as assistant chief for almost two years. He has been a member of the department for almost four years.

A native of Southport,

(Continued On Page 9)

## Peoples Starts Work On Office

Peoples Savings and Loan Association of Wilmington has begun construction of a new full - service branch office in Southport, according to S.D. Bissette, president and chairman of the board.

The new facility will be located on the southwest corner of Howe and Nash streets in downtown Southport, diagonally opposite the Baptist Church. The building was designed by Ballard, McKim and Sawyer, architects of Wilmington, and "will be traditional in design in keeping with the fine historical background of

Southport," said Bissette. The exterior design will feature a Flemish bond brick wall, colonial windows and panel blinds with stone being used on the parapet walls and window sills.

The building will be set back from the street corner sufficient to permit foundation plantings and an ornamental brick wall. An off-street customer parking lot will be entered from Nash Street and twin drive - in windows and a night depository, will be available with an exit to Howe Street.

The one-story building will be approximately 3,000 square feet in size. The interior will consist of a public lobby, tellers windows and service area, the mortgage loan handling and officer area, customer reception, vault and employees' service area. The interior will feature a raised ceiling over the lobby with colonial chandelier and the decor of the building will be traditional in character.

"This branch office will be a full - service facility offering all of the Association's services and will be the center of mortgage loan handling for Brunswick County," Bissette added.

The general contractor is the B.R. Dorsett Construction Company of Wilmington.

(Continued On Page 9)

### Acknowledges Write-In

## Clemmons: Kopp 'Agitated' Board About Injunction

By BILL ALLEN  
Vice - Chairman J.T. Clemmons announced Monday that he will serve another term on the Brunswick County Board of Commissioners if elected, but he will do nothing to promote the write - in campaign being organized on his behalf.

"I am honored that some citizens want to conduct the write - in campaign for me, but I have asked them not to do it," Clemmons said. "I don't endorse the write - in campaign, but I don't disapprove of it either. If I win, I will be honored and I will serve on the board."

Clemmons, who was defeated for re - nomination to the board this spring, made his views known about the write-in campaign during a news conference in Southport Monday. He also expressed concern about recent hospital developments in Brunswick County.

He said the meeting at Wrightsville Beach two weeks ago and the recent actions of Commission Chairman William Kopp, Jr., have made the county hospital situation worse.

"The meeting (at Wrightsville Beach) served no good purpose and only irritated some people involved," he declared. "I hope David Flaherty (secretary of the Department of Human Resources) makes no more statements until the Board of Commissioners ask him to render his opinion."

Clemmons said he was taking no part in the write - in campaign because of the pledge he signed when he filed as a Republican candidate for the board this spring.

"I have told people how I feel about the matter," Clemmons declared. "But I have no control over what citizens do when they cast their ballots," he pointed out. Clemmons, who is completing his second two - year term on the board, was defeated when he ran for re -

nomination in the GOP primary this spring. After the primary, he charged that some party leaders defeated him. "The GOP primary did not reflect the sentiment of the people in Brunswick County," he said Monday.

Since plans for the write - in drive were announced two weeks ago, Clemmons said he has not heard from any GOP leaders in the county. "Although I have not requested it, Republican party members have wished me well and said they were going to write my name on the ballot," he pointed out. He said he was surprised

that Andrew Gray endorsed the write - in drive last week. Gray was defeated when he ran for the Democratic nomination for the Lockwood Folly Township seat on the board in the spring. But he received "three times as many votes as I did," Clemmons pointed out.

Since he said he had no part in it, he did not know how the write - in campaign was progressing. "All I know about it is what I read in the newspapers," he added.

In other matters, Clemmons said he was concerned about the way the meeting at

(Continued On Page 9)

### School Census

## High Schoolers Number 2,375

A total of 7,689 students were attending the 11 schools in Brunswick County after the first ten days of classes, according to information provided by Supt. Ralph King.

King told members of the Board of Education at a recent meeting that the 7,689 students attending county schools include 2,458 blacks and 5,218 whites.

A total of 7,302 students are enrolled in grades one through 12. The total includes 2,342 blacks and 4,957 white. Last year, 7,010 students attended the first 12 grades. Kindergarten attendance increased from 247 students to 387 this year. The total this year includes 116 blacks and 261 whites.

Enrollment increased over last year at Bolivia Elementary, Leland Middle, North Brunswick, South Brunswick, Southport Middle, and West Brunswick. Lincoln Primary, Shallotte

Middle, Southport Primary, Union Primary and Waccamaw Elementary had a decline in enrollment.

Shallotte Middle, one of the schools where enrollment declined, continues to have more students than any other school in Brunswick County, 1,007.

Waccamaw Elementary continues to have fewer students - 456 - than any other school in the county.

Bolivia Elementary has 731 students, including 227 blacks and 501 whites. The school had 711 students last year. Leland Middle school grew from 652 students to 696 this year. The total includes 248 blacks and 447 whites.

Lincoln Primary School, which has declined from 524 to 520 students, has 192 blacks and 328 whites.

Enrollment at North Brunswick jumped from 660 to 739 students this year. The number includes 315 blacks

(Continued On Page 9)

### For Street Aid

## Towns Receive Powell Funding

Brunswick County towns will receive this Powell Bill funds before the end of the month, Secretary of Transportation Troy Doby announced this week.

Boiling Spring Lakes, Bolivia, Holden Beach, Long Beach, Ocean Isle Beach, Shallotte, Southport, Sunset Beach and Yaupon Beach will all receive funds from the Powell Bill.

Boiling Spring Lakes will

receive \$75,680.95 based on an estimated 1973 population of 700 and 103.21 miles of streets.

Bolivia, which has an estimated 1973 population of 230 and 1.28 street miles, will obtain \$2,962.98 from the fund.

Holden Beach will receive \$6,877.87. The town has an estimated 1973 population of 170 and 7.93 street miles.

Long Beach will receive

\$94,588.07 based on an estimated 1973 population of 4,460 and 80.14 miles of streets.

Ocean Isle Beach, which has an estimated 1973 population of 100 and 10.85 street miles, will obtain \$8,197.58.

Shallotte will receive \$10,603.99. The city has an estimated 1973 population of 730 and 5.85 street miles.

Southport will receive

\$35,992.82 based on an estimated 1973 population of 2,730 and 16.42 street miles.

Sunset Beach will receive \$7,418.72. The town has an estimated 1973 population of 130 and 9.28 street miles.

Yaupon Beach will receive \$10,972.73 based on an estimated 1973 population of 410 and 10.76 street miles.

The amount to be distributed throughout the

(Continued On Page 18)