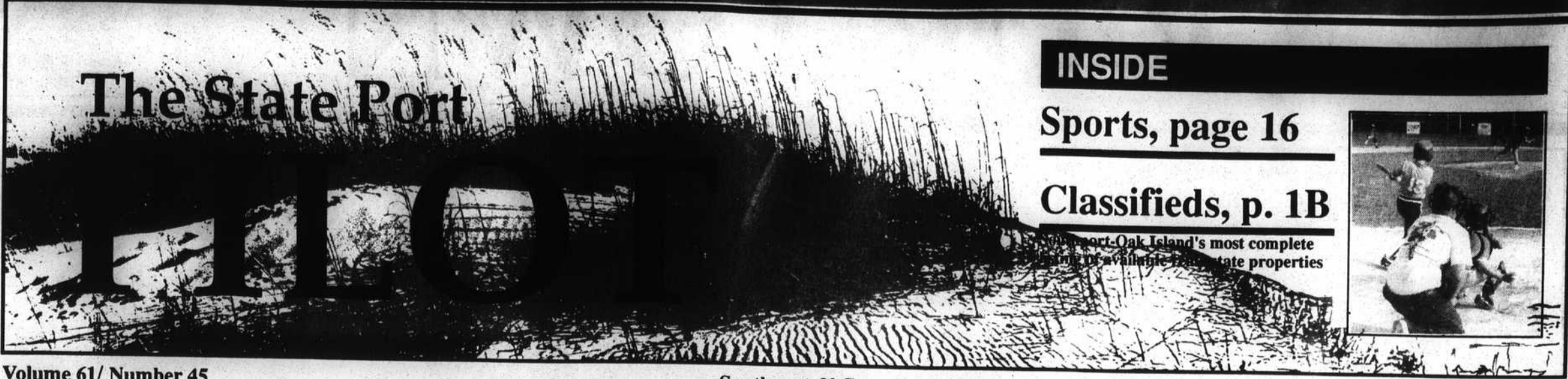


N.C. Fourth of July Festival program inside

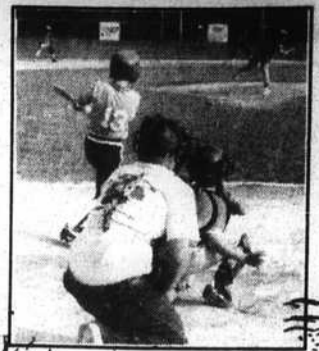


INSIDE

Sports, page 16

Classifieds, p. 1B

Southport-Oak Island's most complete
of available real estate properties



Volume 61/ Number 45

Southport, N.C.

June 24, 1992 / 50 cents

Oak Island police pact a standoff

Yaupon yields, accepts Long Beach EMS fee

By Jim Harper
Staff Writer

Three Oak Island communities have apparently reached accord over the provision of emergency medical services, but whether talks on a merged police department -- forestalled by discord over EMS fees -- will proceed is still an open question.

Early last week communications between Long Beach and Yaupon Beach governing boards led Yaupon Beach mayor pro-tem Joe Broyles to urge payment of \$1,056 more than his board had budgeted for services of the Long Beach rescue squad.

Those communications included a letter from Yaupon Beach board member Dot Kelly, stating why her town would pay \$5,500 instead of the \$6,556 Long Beach had asked; a letter from Long Beach mayor Joan Altman stating that Long Beach was adamant in its demand; and a telephone conversation with a

Long Beach budget, page 2

Long Beach councilman in which Broyles learned that continued medical service for his community was in real jeopardy.

Broyles said last Thursday that he sought "reluctant agreement" from his fellow board members after an unnamed Long Beach councilman told him there were enough negative votes on the Long Beach council to end emergency medical service to Yaupon Beach.

Broyles said he polled his board (mayor May Moore is vacationing out of the country) because "what became important was for our people to have rescue services," and found agreement to pay the extra \$1,056 that Long Beach had requested.

Broyles said that the decision would be ratified and the budget amended in a regular board meeting. The next session is July 13.

Emergency medical service on Oak Island has traditionally been provided by Long Beach and supported by donations from Caswell Beach and Long Beach.

This spring Long Beach officials met with representatives of its neighbors, seeking a formal EMS contract and requesting a specific fee rather than a donation.

In the meetings Long Beach representatives also suggested further talks on possible shared services among the three municipalities, including police protection.

Caswell Beach has agreed to a \$2,500 contract with Long Beach for emergency medical service (as well as police dispatch service), and also has named commissioner Bill Boyd as a representative to talk about cooperative police services.

But in the June 8 Yaupon Beach town board meeting talk about police See EMS fee, page 5

Southport board sets 58-cent rate

Southport aldermen Tuesday night approved a \$5,784,065 budget and set a 58-cent tax rate to support it.

The bulk of the budget is taken up with water and sewer, electrical and Powell Bill (road) funds; the \$1,677,142 general fund is supported by ad valorem taxes that total \$491,996 for the coming year.

General fund expenditures are also to be supported by a \$146,659 appropriation from the fund balance -- roughly 8.7 percent of the total.

Other significant contributions to the general fund include \$153,633 in solid waste fees, \$235,600 from interfund transfers (from water and sewer and electric funds) and \$319,000 in shared state revenues.

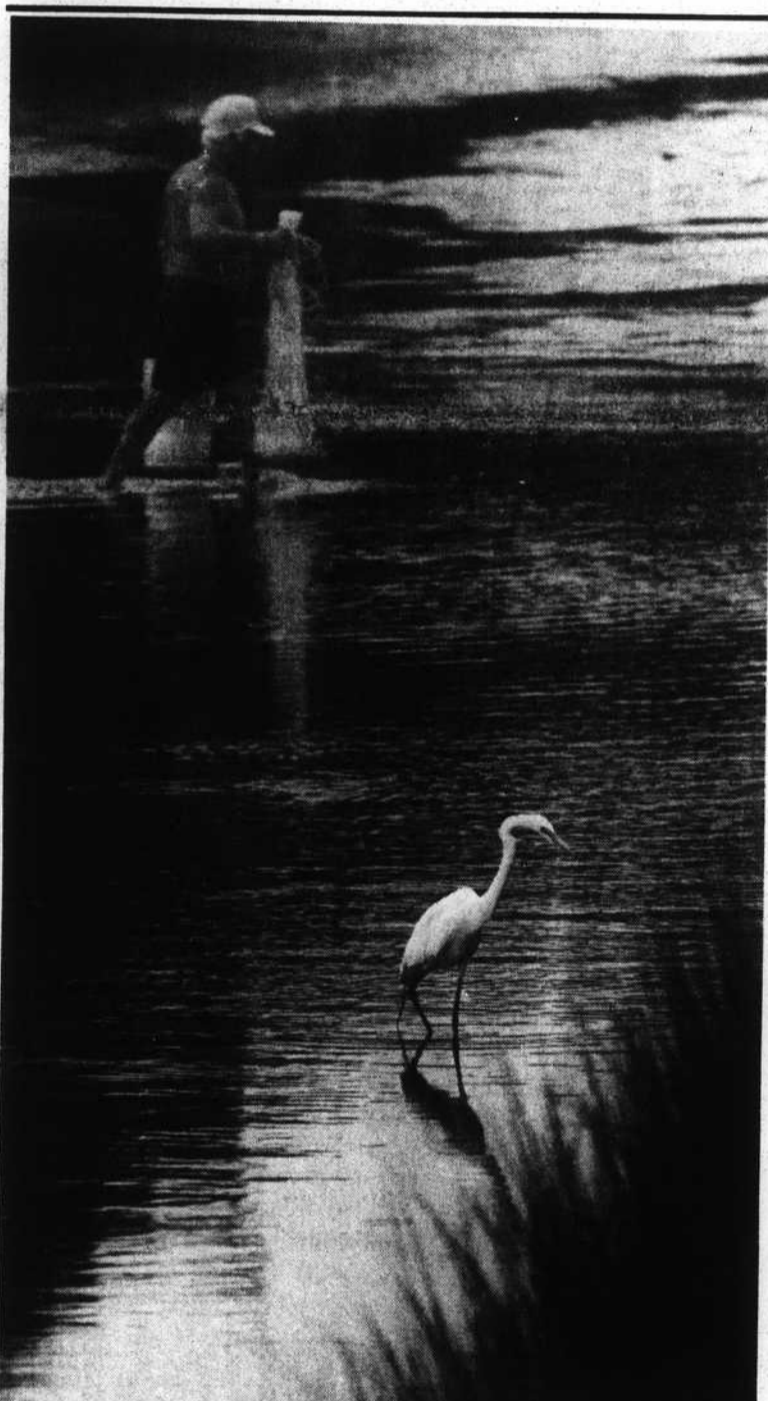
Adoption of the budget followed a brief discussion and general support by board members for renovation of the Community Building. Budget approval was unanimous, preserving the present 58-cent tax rate while also maintaining utility fees, water fees, sewer fees and sanitary disposal fees.

In other action the aldermen heard a recommendation by city manager Rob Hites that city pier refurbishing be extended to include installation of new lights before the Fourth of July.

Hites called on aldermen to join with other members of city advisory boards and city staff in helping paint the pier railings before the Independence Day celebration.

A total of \$1,900 was allocated for the project.

A year-end board session to ratify final budget amendments was set for 7:30 a.m. June 30 at the Sea Captain Restaurant.



Davis Creek at Long Beach is a favorite fishing spot for American egrets as well as for cast netters seeking shrimp for trout bait. Jim Ratcliff, the netter here, supplies live bait to Long Beach Pier.

Tourists over trailers

High-dollar comment in policy a cheap shot?

By Holly Edwards
County Editor

A handful of disgruntled Brunswick County residents asked members of the planning board last week why they wanted to discourage the proliferation of mobile homes for county residents and encourage "high-dollar" industry for tourists.

"You're focusing on two extremes, but there's a middle in there," said county resident Patty Young. "It's not anyone's fault that they don't have \$75 to play a round of golf. There should be other kinds of tourism, too."

An article published in the

'If you have nothing but T-shirt shops, our people will never be able to pull themselves up by their boot straps because they won't have any boots. We're trying to provide a better caliber of jobs for our people.'

John Barbee

Wilmington Morning Star last week triggered the controversy by focusing on two statements in the county's draft of the Coastal Area Management Act (CAMA) land use policies. These See High-dollar, page 5

Assistant principals stand in corner, awaiting decision

By Marybeth Bianchi
Feature Editor

Three assistant principals await their fate as the Brunswick County Board of Education decides where they'll be working come fall.

Doyle Brinson, who has spent the last four months as assistant principal at South Brunswick Middle School; Michael Brown, assistant at North Brunswick High; and Diana Smith, assistant at Lincoln Primary, were displaced from their jobs Thursday night in a shift of assistant principals across the county.

Smith has been an educator for the past 19 years, seven of which have been spent as assistant principal at Lincoln. Unlike teachers and principals, assistant principals cannot earn tenure after

three years on the job, she pointed out.

Smith said superintendent P. R. Hankins contacted her the day before the meeting last week to tell her she was going to be removed from her job, for which she said she had recently received an outstanding performance review.

Smith is uncertain what the future holds for her, but she did say, "I want a job somewhere in the county. I'm going to sit back and see where I go."

She and the others may find out later this week when the Brunswick County Board of Education meets again in a special session at 6:30 p.m. Thursday to discuss personnel.

"The central office administration has the job of looking at the staff when the board and See Principals, page 20

County services are lacking

Bald Head a deserted island?

By Jim Harper
Staff Writer

Formation of a political action committee (PAC) on Bald Head Island was suggested Saturday as a means of getting the attention of Brunswick County commissioners who do not send much money to the island.

In a village council discussion about tying in with the county water system, mayor A. C. Sorrell recalled that commissioner Gene Pinkerton once said the county might pay for installing a water line to the island.

But he said that communications with Pinkerton seem to have broken down after he recently asked the commissioner for help in getting some county trash services for the island.

Tram service, budget-page 2

"It is a completely frustrating feeling to get nowhere with (the county board)," Sorrell said.

"There have been discussions of forming a PAC and getting involved in county politics," Sorrell noted. He also said a suggestion had been made that the island community could be removed by the state legislature to another county, "or the General Assembly could force Brunswick County to give us a different tax rate."

The village's frustration over county services stems mainly from what taxes flow out -- \$978,750 this year -- and what comes back -- \$27,500 in fire and rescue funds.

In a special section of his budget message, village manager Wallace Martin said, "We are now reaching a point in combined taxes (county and town) that equals the combined rates of Raleigh, Durham, High Point and other large towns that provide many more services to their taxpayers."

"Our property owners pay a county and a municipal tax so there are two levels of service and two levels of taxation. The county level of service is difficult to identify on Bald Head."

Another island complaint is that the county commissioners three years ago stopped sending back sales tax funds on the basis of how much was col-

lected, and now does it out according to how many residents Bald Head Island has.

"Over a three-year period the village has suffered an income loss of \$300,000," Martin's message said.

"We all know that the tax money goes to support the county government and its departments but if every incorporated town contributes in proportion to Bald Head Island with so little return there should be created a very large surplus in the county treasury."

'The county level of service is difficult to identify on Bald Head.'

OUTSIDE



Forecast

The National Weather Service calls for variably cloudy skies on Thursday. Friday through Sunday, the forecast is for a chance of showers or thunder-showers. Highs during the period will be in the mid-80s, with nightly lows around 70.

Tide table

HIGH	THURSDAY, JUNE 25	LOW
3:36 a.m.		10:03 a.m.
4:23 p.m.		10:54 p.m.
	FRIDAY, JUNE 26	
4:36 a.m.		10:59 a.m.
5:22 p.m.		11:51 p.m.
	SATURDAY, JUNE 27	
5:37 a.m.		11:54 a.m.
6:18 p.m.		----- p.m.
	SUNDAY, JUNE 28	
6:36 a.m.		12:47 a.m.
7:13 p.m.		12:50 p.m.
	MONDAY, JUNE 29	
7:32 a.m.		1:41 a.m.
8:04 p.m.		1:41 p.m.
	TUESDAY, JUNE 30	
8:28 a.m.		2:32 a.m.
8:56 p.m.		2:33 p.m.
	WEDNESDAY, JULY 1	
9:23 a.m.		3:20 a.m.
9:48 p.m.		3:25 p.m.

The following adjustments should be made: Bald Head Island, high -10, low -7; Caswell Beach, high -5, low -1; Southport, high +7, low +15; Yaupon Beach, high -32, low -45; Lockwood Folly, high -22, low -8.