

The State Port

INSIDE
Sports, page 15
Classifieds, p. 1B



Southport-Oak Island's most complete listing of available real estate properties

'My position is, I own the land, and it's for sale' Developer says he owns marsh, roadside strip

By Jim Harper
Staff Writer

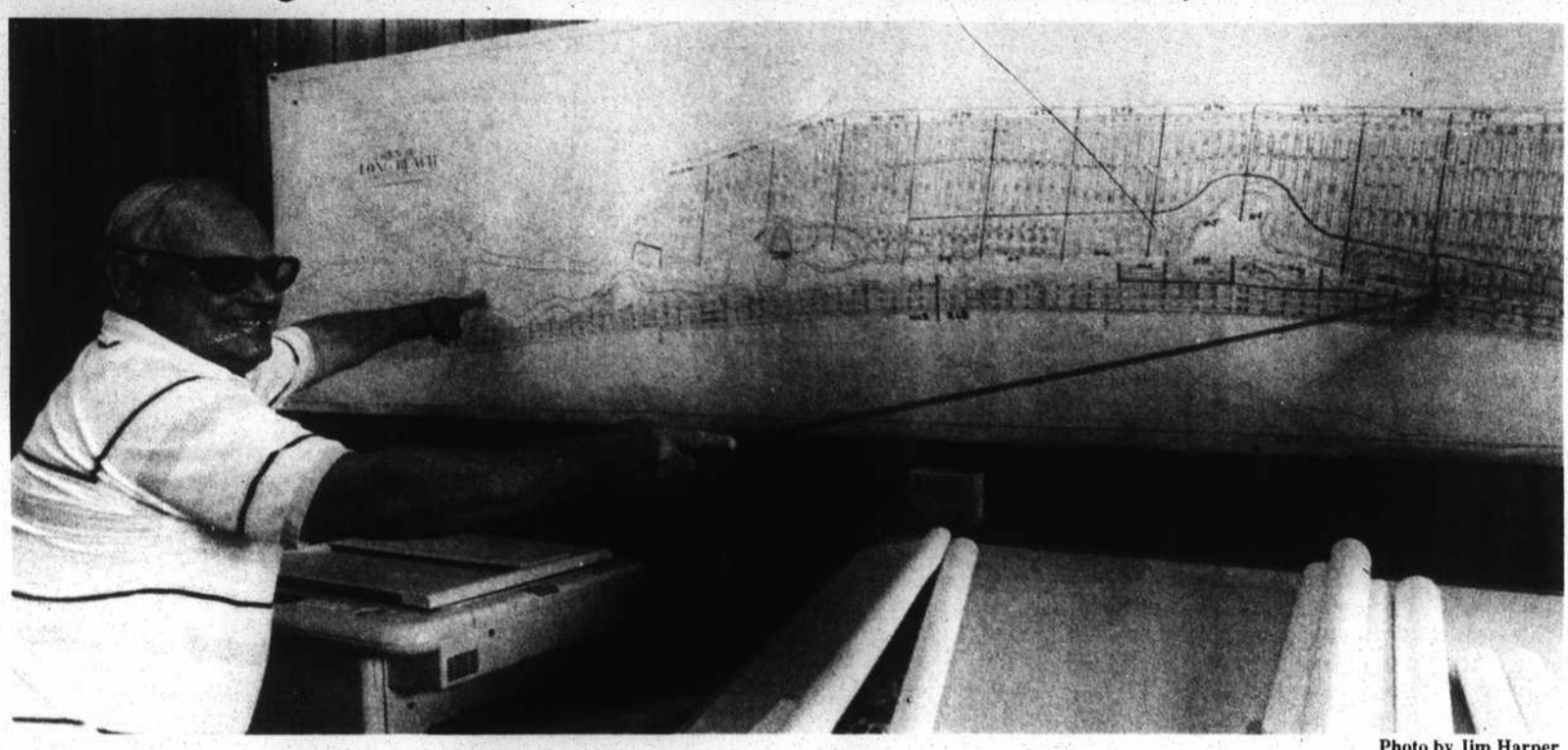
Surveyor-developer Bob McHenry has purchased 288 acres of Davis Creek marshland in conjunction with two other Oak Island developers and plans to sell either water access from the south or view from the north to adjacent property owners.

McHenry also says he has acquired a 20-foot-wide strip along the north side of Oak Island Drive from 46th to 64th streets east -- the Long Beach business district -- and plans to negotiate with either the town or the adjacent property owners over future use of the land.

McHenry on Friday said the purchase was made this spring by him, Homer Wright and Ken Clifton -- principals in the Hoboke Corporation -- from the residue of the old Middleton holdings in Long Beach.

Wright has been involved in many Oak Island developments and is presently involved in the St. James Plantation project across the Intracoastal Waterway. Clifton is developing the Turtle Creek subdivision in Long Beach.

McHenry said that subsequent to the purchase he has obtained Wright's Hoboke stock and is negotiating to



Oak Island surveyor-developer Bob McHenry shows the extent of his holdings in the Davis Creek marsh of Long Beach, part of a purchase the Hoboke Corporation made of the residue of the E. F. Middleton real estate development.

obtain Clifton's share. "I bought the land to make a dollar," McHenry stated Friday. "I bought all of Loyal American Insurance

Company's holdings on Long Beach. They had bought the land from National Development Company (the old E. F. Middleton company which

was the initial Long Beach development group). "I got all the marsh from 40th Street to where Davis Creek crosses in front

of Blue Water Point -- from the Davis Canal to the edge of the marsh off Pelican Drive." McHenry concedes that none of the

land in the marsh is buildable under present standards, though there is some high ground there. He is aiming to sell property to adjacent owners to enhance their holdings.

"I quoted a fellow \$1,500 last night," McHenry said Friday. He said his prospective buyer owns land on the north side of Davis Canal and "wants to cut the trees off the island so he can see the ocean."

McHenry said he is negotiating with at least one other northsider for the sale of four lots on the land across Davis Canal, and he said that he is willing to negotiate with southside landowners who would like to put a dock across his marsh to the canal.

He said he has the figure \$1,500 in mind for an access, though "I want somebody to make me an offer. I might take less."

Likewise, McHenry said he is willing to talk with either the Town of Long Beach or with property owners for use of the 20-foot strip along the north margin of Oak Island Drive.

"If the town shows they own it, I'll back off," McHenry said. "There'll be no conflict."

And if the town doesn't challenge his claim?

"I'll work it out with the town or See McHenry, page 3

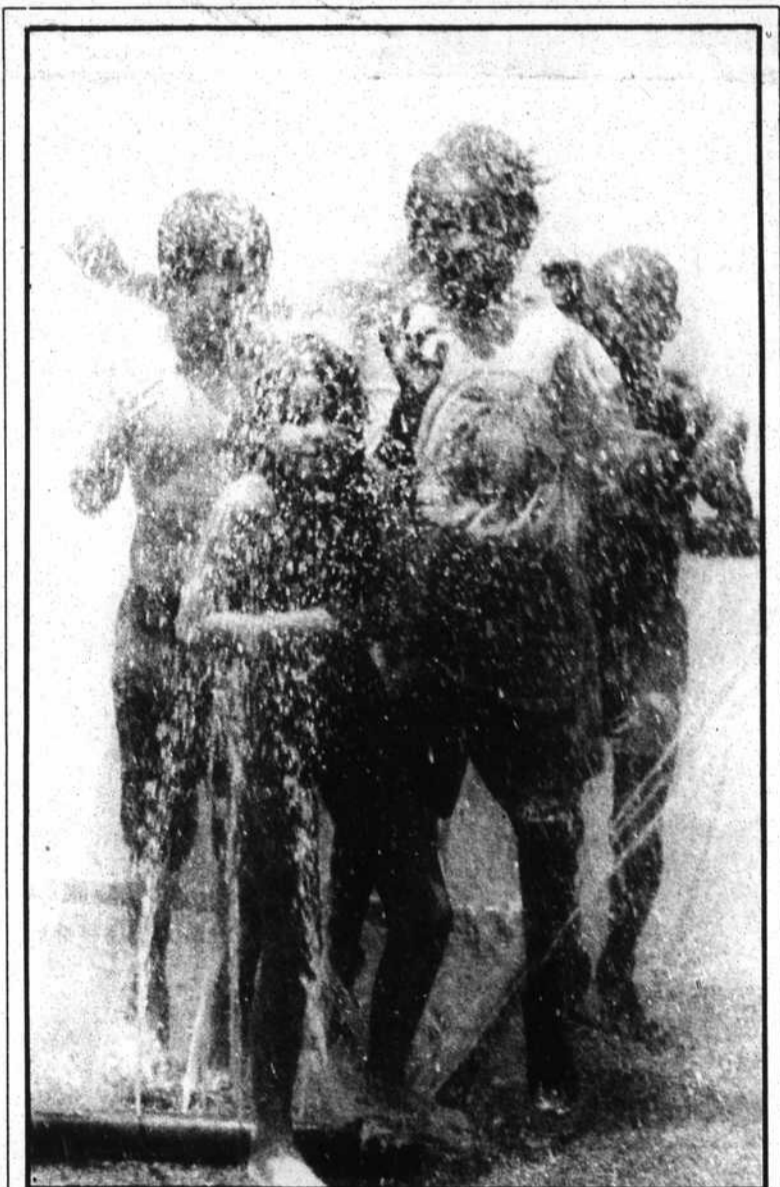
CP&L and NRC meet Thursday

Representatives of Carolina Power and Light Co., including Brunswick nuclear plant vice-president R. B. Richey and former Brunswick vice-president Russ Starkey, will meet with Nuclear Regulatory Commission representatives in Atlanta Thursday to discuss "restart issues."

Brunswick's two generating units, shut down by the company April 21 while emergency facilities there were repaired, are under an effective shutdown by the NRC, which has insisted on a comprehensive management, repair and maintenance program improvement before the units can operate again.

NRC regional administrator Stewart Ebnetter has given the power company until next week to respond to two reprimanding letters which cite problems ranging from management to corrosion, but last week Ebnetter summarized Brunswick's problems as poor communication between company headquarters and local operators, poor local leadership and poor material condition.

The plant was shut down by CP&L in April for repairs to walls in the emergency diesel generator building which did not meet earthquake-proof standards as designed. Emergency diesels would be used in shutdown of the plant if normal sources of electricity were cut off.



A big hit in Southport's youth recreation program these torrid days is the sprayer which creates its own cooling rain when attached to a fire hydrant.

Article spotlights retirement

Southport-Oak Island has gained national distinction again as one of the top retirement areas in the country.

The August issue of *Kiplinger's Personal Finance* magazine spotlighted ten towns and small cities like Southport that retirees are choosing over planned communities in Florida and Arizona.

The list was compiled with assistance from David Savageau, a relocation consultant and author of *Retirement Places Rated*. That book, published in 1987, rated Southport 18th out of 131 cities across the country in six categories retirees consider most when looking for a new home.

Top among retirees' concerns is finding a spot with a sense of "authentic" community. The Kiplinger article states that retirees want "quiet streets instead of congested mall parking lots. Changing seasons rather than endless summer. And a chance to stand out and be different rather

than blend in with the other retirees."

All of that can be found in the Southport-Oak Island area, Karen Hope, executive vice-president of the chamber of commerce, pointed out.

"We have it all," she boasted. "It's an excellent spot to retire."

"Retirees who have relocated here have really been sold on the area because of low taxes, cost of living and culture," she said, pointing out that she has seen quite a few people who have tried Florida only to make the Southport-Oak Island area their permanent home.

"We attract more independent retirees who like their house and garden and who like the change of season," said Hope.

With 6.4 holes of golf per 1,000 residents and 20 courses, the Southport area is "ideal for golfers," according to the article in Kiplinger's, and the author suggests that anglers and boaters will See Kiplinger, page 5

'Different problems' Schools study new methods

By Marybeth Bianchi
Feature Editor

School news, pages 6-7

Two high school principals got stamps of approval from the Brunswick County Board of Education Monday night on plans to enhance learning at their schools.

Sue Sellers of South Brunswick High School and Bob Harris of North Brunswick High are trying to reach the same goal with different methods.

"Every school has a personality. Every school has different problems," Harris told the board. He said he doesn't want to jump in a total program like South Brunswick, which will implement the Comprehensive Management Program when school starts in August. West Brunswick is

gradually phasing in Outcome Based Education and this year will have the ninth and tenth grades involved in the program.

Sellers explained how the Comprehensive Management Program will be incorporated into the curriculum at South Brunswick.

Four major components will be the See New methods, page 6

U.S. 17 work tops TIP agenda

By Ed Harper
Pilot Editor

Completion of a four-lane U. S. 17, a planned connector with Interstate 40 and an overpass where N. C. 130 crosses the Highway 17 bypass of Shallotte are Brunswick County highlights in a \$5.5-billion Transportation Improvement Plan (TIP) draft released this week by the state Department of Transportation.

A second high-level bridge to Oak Island has not yet reached the drawing board. According to the TIP draft, the planning phase would begin in fiscal year 1994 with completion scheduled in 1999, if the proposed TIP is adopted this year by the N. C.

Board of Transportation and holds to the seven-year schedule. The TIP, for years 1993-99, places U. S. 17 projects high on the priority

list. Included are:
•An additional \$22.3 million for construction of a U. S. 17 bypass of Wilmington from Interstate 40 in New

Hanover County to existing U. S. 17 in Brunswick County. Construction is scheduled to begin in 1996, according to the TIP draft, with completion not expected until after the current TIP expires.

•An additional \$3.5 million to build an interchange on U. S. 17 at N. C. 130 in Shallotte. Right-of-way acquisition is scheduled to begin in 1993 and construction in 1994. The intersection, now controlled only by a traffic light, has been the scene of several serious wrecks, including a double fatality last November that drew public outcry and Department of Transportation response.

Among other Brunswick County See TIP agenda, page 5

Island bridge up in the air

How close is the new crossing to Long Beach? Homer Wright, developer of St. James Plantation and co-owner of the land over which a Middleton Street bridge would be approached, says he's granted an easement in principle, but things are far from final.

"We have granted them (DOT) a right-of-way along the old Swain Beach Road by letter," Wright said Monday. "But there was talk of participation, which has not been fully resolved." He said the land he believes will be the Middleton route is actually west of the St. James development and is owned by himself and Claude Smith.

OUTSIDE



Forecast

The extended forecast calls for partly cloudy skies Thursday and Friday, with highs remaining 90 to 95 degrees. It will be cooler Saturday and Sunday -- highs in the 80s -- but with a prediction of scattered showers.

Tide table

HIGH	THURSDAY, JULY 16	LOW
9:42 a.m.		3:42 a.m.
10:06 p.m.		3:42 p.m.
	FRIDAY, JULY 17	
10:19 a.m.		4:19 a.m.
10:40 p.m.		4:20 p.m.
	SATURDAY, JULY 18	
10:54 a.m.		4:54 a.m.
11:10 p.m.		4:59 p.m.
	SUNDAY, JULY 19	
11:29 a.m.		5:31 a.m.
11:42 p.m.		5:38 p.m.
	MONDAY, JULY 20	
--- a.m.		6:05 a.m.
12:11 p.m.		6:21 p.m.
	TUESDAY, JULY 21	
12:19 a.m.		6:48 a.m.
12:56 p.m.		7:10 p.m.
	WEDNESDAY, JULY 22	
1:01 a.m.		7:33 a.m.
1:48 p.m.		8:06 p.m.

The following adjustments should be made:
Bald Head Island, high -10, low -7; Caswell Beach, high -5, low -1; Southport, high +7, low +15; Yaupon Beach, high -32, low -45; Lockwood Folly, high -22, low -8.