

# The State Port

INSIDE

Sports, page 18

Classifieds, p. 5B

Southport, N.C.'s most complete listing of available real estate properties



Volume 61 / Number 30

Southport, N.C.

July 29, 1992 / 50 cents

## 'Changes, commitment' required from CP&L Mandated response follows shutdown, inspection

By Jim Harper  
Staff Writer

Carolina Power and Light Co. last week acknowledged that "changes in managerial effectiveness are required" and pledged "total commitment to improve the material condition" of the Brunswick nuclear plant.

The statements came in a mandated response to safety-related Nuclear Regulatory Commission concerns.

The power company also re-pledged expenditure of \$200 million to \$225 million over the next five years -- in addition to funding for regular company business plans -- for improvements at the plant.

And CP&L said that the improvement efforts will be the responsibility of R. A. Watson, senior vice-president for nuclear generation -- third in line of authority behind executive vice-president Lynn W. Eury and chairman and president Sherwood H. Smith, Jr.

Watson is immediate superior to vice-president R. B. Richey and general manager Jack Spencer at the Brunswick plant.

The Brunswick plant's two nuclear generators are effectively shut down until NRC concerns (see box) are addressed, and a company spokesman Friday said the target for resumed operation is still late fall.

In the formal response last Thursday Watson wrote to the NRC regional administrator:

"CP&L is committed to provide the resources necessary to implement promptly and effectively the improvements which are necessary to achieve sustained, high levels of performance at the Brunswick plant and to meet all regulatory requirements.

"Over the next five years the company has committed over \$200 million to improve the Brunswick plant, over and above the substantial financial resources previously approved in the Brunswick plant business plan for this period.

"We believe that the action ... will enable the Brunswick plant to achieve a long-term, superior operating performance."

The Brunswick plant has consistently received low marks on regular NRC inspections and has drawn nearly \$800,000 in NRC fines over the past four years.

The shutdown in April was initially to repair walls in an emergency generator building which were not earthquake proof, as designed -- a condition CP&L had known of for five years. Subsequent inspections have disclosed similar structural problems, and these inspections are continuing.

The Brunswick plant, which went into operation 1975 (unit two) through 1977 (unit one), is one of three nuclear generating facilities operated by CP&L, and the only one in trouble with the NRC.

Commenting on the Brunswick pre-startup plan, which addresses the five

See CP&L, page 6

### Causes of concern . . .

Carolina Power and Light Co. responded to Nuclear Regulatory Commission concerns that are based on a history of low safety marks at the Brunswick nuclear plant and findings in a series of NRC inspections there this spring.

On May 23 the NRC identified root causes of continuing performance problems at the plant as:

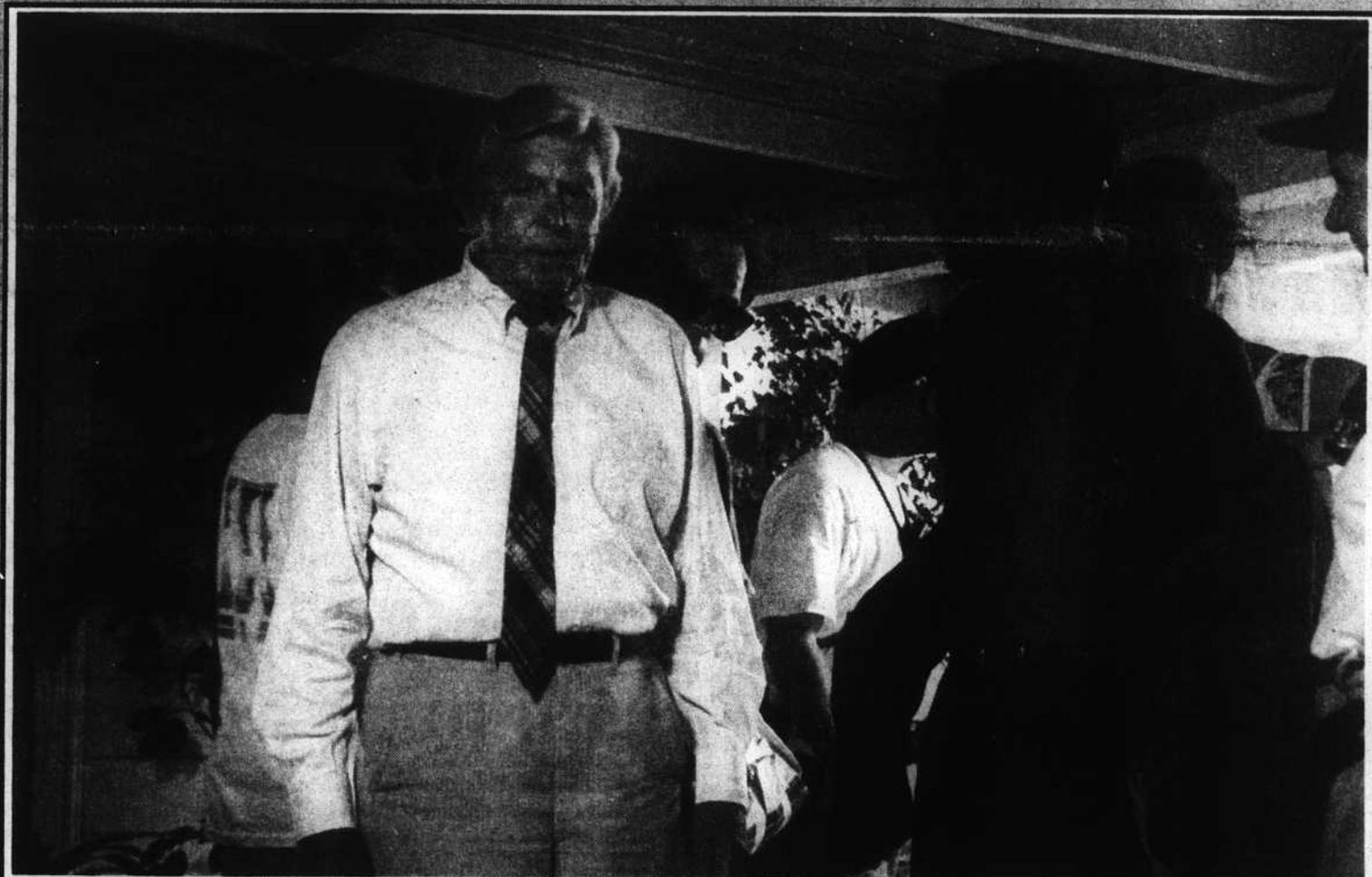
• Management's failure to set high standards for the material condition of the plant.

• A failure of management to provide the leadership and support needed for improvement.

• A lack of critical self-assessment resulting in failure to recognize problems and implement effective corrective action.

On June 23 the NRC highlighted concerns that must be addressed by CP&L before the plant, shut down by CP&L April 21 for safety-related repairs, can be reopened. These included equipment corrosion problems, maintenance backlogs, potential structural deficiencies, a backlog of "temporary work-around conditions," and equipment deficiencies.

## SOUTHPORT FILMING



It was a hot day of filming in Southport for veteran actor Andy Griffith, who plays Ben Matlock, an Atlanta-based criminal defense attorney. Several scenes of a two-hour "Matlock" televi-

sion special to open the fall season were shot on Thursday at the Law house on Moore Street. With Griffith is co-star Clarence Gilyard and crew members as they prepare for another scene.

Photo by Marybeth Bianchi

## Library may have 'Barbee' title

By Holly Edwards  
County Editor

The Oak Island Library Boosters could lose \$120,000 in donated property if the library board does not agree to include Gib Barbee's name in the Oak Island branch of the Brunswick County library system.

When the library boosters organization began raising funds nearly a

year and a half ago it decided to allow the largest individual donor to name the library branch, library board member Ann Hines said at Monday night's board meeting. Since then, she said, Barbee has agreed to donate \$65,000 worth of property if the library branch name includes "G. V. Barbee". However, Barbee's donation is inherently tied to a United Carolina Bank offer of \$55,000 worth of property on the same block.

"If (Barbee) does not get the name then it's no deal," Hines said. "He was shocked because he could not name it in conjunction with Brunswick County."

The prospective location for the future Oak Island library branch is located at the site of the old UCB building in Yaupon Beach. Hines said the total value of the property according to the tax office is \$248,200.

A majority of library board members said they wanted time to think about the issue, and tabled discussion until their next meeting on August 10. Only board member John Jacobs spoke out against using Barbee's name.

"I'm against it. I think it should be 'Brunswick County Library -- Oak Island Branch' with a plaque on the

*'I'm against it. I think it should be "Brunswick County Library -- Oak Island Branch" with a plaque on the inside for Barbee. I don't think it's right. He can have his money.'*

John Jacobs  
Library board member

inside for Barbee. I don't think it's right. He can have his money," Jacobs said. "How do you put a price tag on recognition? I'm against naming any building for a person, no matter how much money they give us."

However, library board chairman Gene Pinkerton urged the board to consider what it would be giving up by turning down Barbee's donation.

"The piece of property at Oak Island is valuable and beautiful," Pinkerton told the board. "When we look at that much property at that location, I think we're making a mistake not to consider it. I really would like for you to consider tabling this

decision, and asking Mr. Barbee and UCB to put the brakes on."

Hines indicated that Barbee and UCB were ready to turn the property over in March -- before the library system became a county department -- and that UCB's lease on the property expires on August 1. If the county does not accept the property before August 1, Hines said, the library boosters will be compelled to pay \$600 in liability insurance on the property.

"They've put it off so long, and I don't think they'll put it off any longer," she said.

Board member Margaret Harper  
See Library, page 6

## Southeast sanitary district okays sewer

Residents in the Southeast Brunswick Sanitary District Tuesday voted 90-14 to issue \$1.2 million in bonds to finance the first phase of a wastewater treatment system there.

At the announcement of the vote in the Beach Road Moose Lodge, 14 people on hand cheered.

The district, bounded by the Intracoastal Waterway, Beaverdam Creek, Highway 211 and the CP&L discharge canal, will use the first public affirmation of a need for such a system to garner an additional \$2.6-million federal grant which has been assured.

Initial construction of sanitary sewer will be along Beach Road and in developed sections west and north of the Fish Factory Road intersection, as well as in a section of Dutchman Acres across Highway 211. A treatment plant will be located on Beaverdam Creek north of Airport Road.

## Officials smile on fluoridation

By Holly Edwards  
County Editor

After ten years of debate and discussion by county and public health officials, Brunswick County will begin fluoridating its water system on Monday, August 3.

"I really believe, honestly, that the fluoridation of the water supply will have a greater benefit than any one thing we've done in the last several years in Brunswick County," declared county health director Michael Rhodes. "I think it's a very, very positive move for public health."

Water fluoridation is the most effective measure to prevent tooth decay, and children who drink fluoridated water from birth experience up to 65 percent fewer cavities than children who do not drink fluoridated water, according to Dr. David McDaniel, the regional public health

*'You won't see the benefits next week, but over a period of years you will see a gradual improvement in the dental health of the citizens of Brunswick County.'*

Dr. David McDaniel

dentist for Brunswick and New Hanover counties.

Fluoride is absorbed by a child's

See Fluoridation, page 6

### Museum offers free admission

The Southport Maritime Museum will observe Patriots Appreciation Day on Saturday, August 1, by offering free admission to all who pass through the museum's doors between 10 a.m. and 4 p.m.

The museum's volunteer staff hopes local residents as well as visitors will take advantage of the \$2-a-person savings to learn more about the Cape Fear area's long maritime history.

### OUTSIDE



### Tide table

HIGH	THURSDAY, JULY 30	LOW
9:07 a.m.		2:58 a.m.
9:29 p.m.		3:10 p.m.
HIGH	FRIDAY, JULY 31	LOW
9:59 a.m.		3:46 a.m.
10:19 p.m.		4:02 p.m.
HIGH	SATURDAY, AUGUST 1	LOW
10:54 a.m.		4:35 a.m.
11:10 p.m.		4:54 p.m.
HIGH	SUNDAY, AUGUST 2	LOW
11:47 a.m.		5:21 a.m.
— p.m.		5:47 p.m.
HIGH	MONDAY, AUGUST 3	LOW
12:00 a.m.		6:11 a.m.
12:43 p.m.		6:43 p.m.
HIGH	TUESDAY, AUGUST 4	LOW
12:51 a.m.		7:02 a.m.
1:39 p.m.		7:42 p.m.
HIGH	WEDNESDAY, AUGUST 5	LOW
1:48 a.m.		7:57 a.m.
2:37 p.m.		8:42 p.m.

### Forecast

The extended forecast calls for widely scattered thundershowers from Thursday through Saturday with normal summer temperatures. Highs in the 90s, lows in the 70s.

The following information should be made: High - 90, Low - 70, Current - 70, High - 90, Low - 70, Current - 70.