

NEIGHBORS

Homes for the holiday on Oak Island

The sixth annual Oak Island Tour of Homes features seven houses and the new Oak Island Coast Guard Station.

The tour will be from 1 to 5 p.m. this Sunday, December 6. Tickets are \$5 and are available at the Southport-Oak Island Chamber of Commerce, Nice 'n' Pretty, Sweettreat, Swayne's Garden, Gifts and Crafts, B&B's Island Garden Center and Boat House Gifts. Proceeds are used for Oak Island Beautification Club projects.

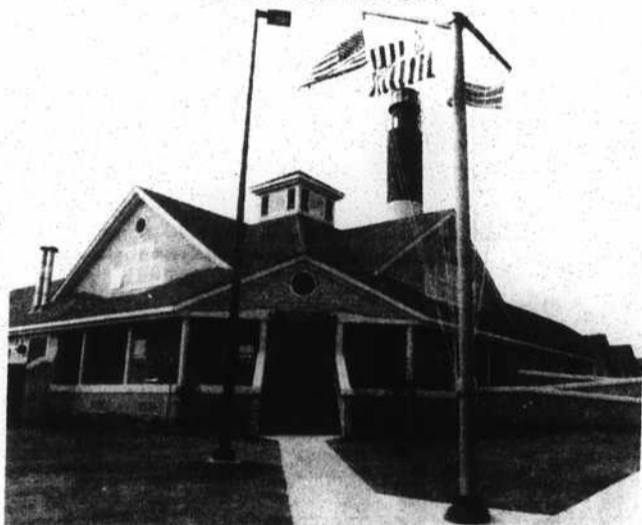
Ticket-holders can begin or end the tour of homes at the Long Beach Recreation Center, where entertainment and refreshments will be provided throughout the afternoon. A bake sale will be conducted by the Order of the Eastern Star.

Featured on the 1992 tour are, beginning at the western portion of Long Beach:

•105-10th Street SW, Long Beach. The home of



110-8th STREET SW



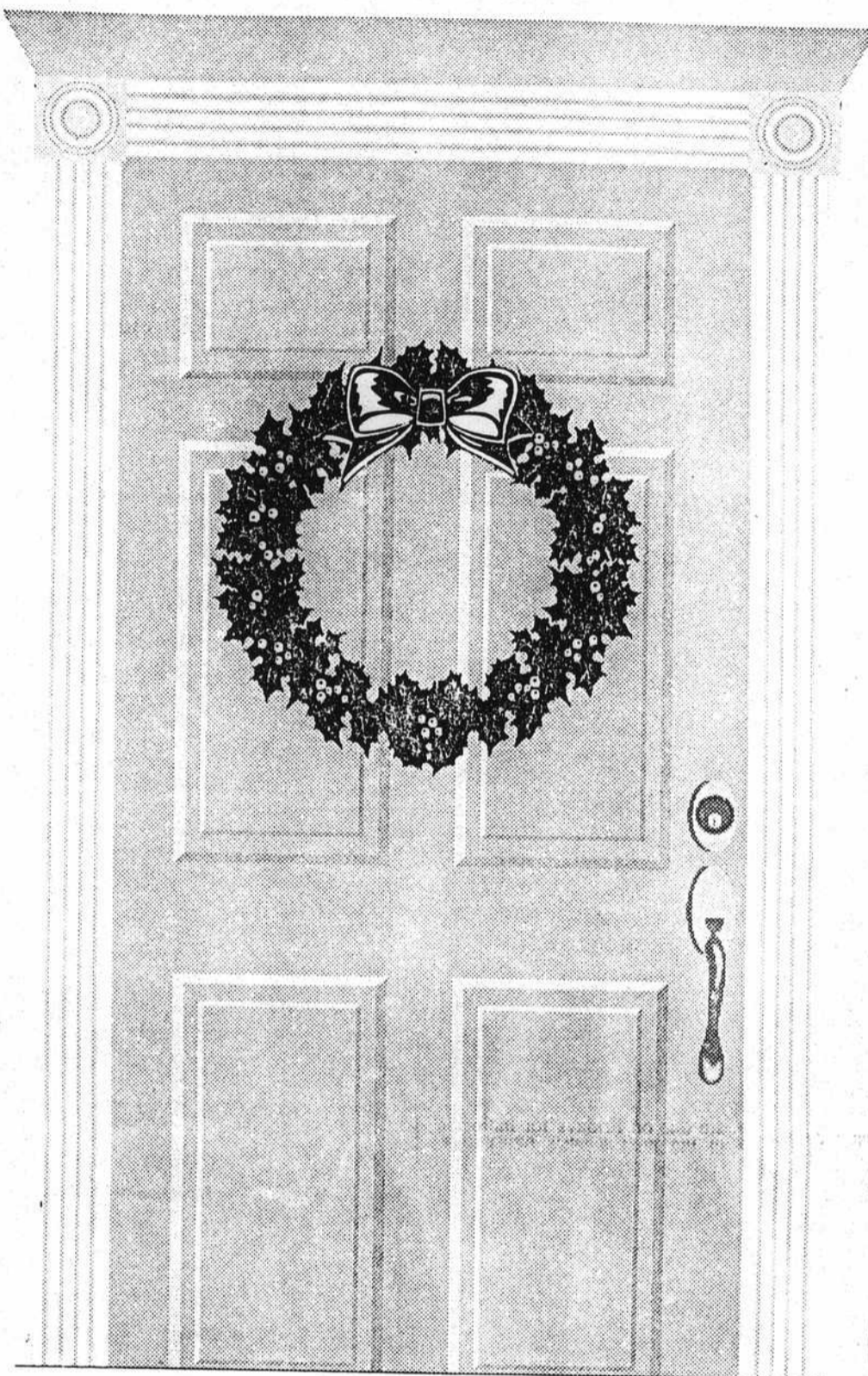
300 CASWELL BEACH ROAD



2406 EAST YACHT DRIVE



38 AUGUSTA DRIVE



Brenda Holmes is a three-story contemporary structure with a view of Davis Canal and a formal English garden. Needlework designed and stitched by the homeowner decorates the interior along with her original paintings.

•110-8th Street SW, Long Beach. This octagon house was designed and built by owners Jerry and Lois Gable. They did all the finish work, including ceramic tile and marble.

•2406 East Yacht Drive, Long Beach. James and Dot Yaskiewicz's home is a Carolina cottage from *Southern Living*. The three-story house is located along Intracoastal Waterway and will be decorated for the holidays featuring Santa Claus and Lionel train collections.

•105-40th Street NE, Long Beach. This 30-year-old brick ranch home is owned by Jerome and Lynne Evers. It features a lot of stencil work.

•308-58th Street NE, Long Beach. Martha Moe's one-story brick home was designed and built in 1958 by her husband during their vacations. Much of the wooden paneling in the house

was given to the Moes by a New York church member who owned the largest hardwood company in the world. The stone used on the see-through fireplace was quarried in Tennessee.

•38 Augusta Drive, Yaupon Beach. The home of Bill and Betty Johnson is a new traditional-style home. The owners have a large collection of antique furniture and a collection of First Lady dolls.

•400 Palmetto Drive, Caswell Beach. This is Ray and Barb Marlott's 14th home and they call it their "little gray house by the sea". It is furnished in country, French and English styles.

•300 Caswell Beach Road. The new 11,000-square-foot Oak Island Coast Guard Station was dedicated in May and cost approximately \$3 million to complete. The building was designed to blend with the local environment and reflect a modern-day adaptation of an old Coast Guard station. The station is included as a bonus on the Oak Island Tour of Homes. It is regularly open to the public at no charge.



105-10th STREET SW



400 PALMETTO DRIVE



308-58th STREET NE



105-40th STREET NE

More holiday events highlight busy weekend

Southport-Oak Island's 1992 holiday season moves into full swing this weekend with a variety of events.

The Christmas-By-the-Sea Festival kicks off on Saturday, December 5. A silent auction and bake sale is planned for 10 a.m. to noon at Middleton Park in Long Beach along with a barbecue dinner sale sponsored by the Fraternal Order of Police that gets underway at 11 a.m. In conjunction with those events will be a performance by an Elvis impersonator, a bicycle rodeo for children including a bicycle giveaway and a fingerprinting program for kids conducted by the Long Beach Police Department.

The sixth annual parade on Oak Island is scheduled for 3 p.m. Holiday floats, Shrine units, bands, beauty queens, local dignitaries and Santa Claus will be featured. It will begin in Yaupon Beach and conclude at Middleton Park.

That evening, the parade takes to the water when decorated boats sail past the Southport waterfront. Enter-



tainment will begin at 6:45 p.m. and the flotilla at 7:30 p.m. The Southport Woman's Club Holiday House, featuring Christmas collectibles and collections, is open from 1 to 9

p.m. Saturday and continues from noon to 6 p.m. Sunday at the Southport Community Building.

Also on Sunday, Yuletide Harbor will be the setting for a community tree trimming party at 1 p.m. and a Christmas decorating workshop at 2:30 p.m. Yuletide Harbor will be located at the corner of Howe and Bay streets in Southport. Programs and entertainment will be featured there throughout December as part of Southport's 200th Christmas celebration.

A community Christmas party will be held at 1:30 p.m. at the Brunswick County Government Center public assembly building. Those planning to attend should bring an ornament for the tree. A visit from Santa Claus is planned, along with entertainment and refreshments.

More information on these and other festive events can be obtained from the Southport-Oak Island Chamber of Commerce, 457-6964, or Southport 2000, Inc., 457-7927.