

Gallery draws closer to second in darts

The Gallery inched ever closer to second spot with a 19-0 forfeit win over Skipper's I in action December 1 in the Southport-Oak Island Dart League.

The lack of an opponent didn't stop their tally of all-star points as each player threw the permitted 18 darts per event. Billy Smart had a Round of Nine, three corks, a C-7, a 120 and a pair of 95s; Steve Early had four corks, a C-7, a 133 and a pair of 95s; Bubba Howard had three corks and a 99; and Bobby James had a 95.

The G-men picked up a half game on idle Oarhouse I.

Four of the remaining six matches in the league were decided by the same score, 15-4. WD 40 trimmed Dyno-Flites as Junie Andrews had a 101 open, a pair of tons, a 78 close and a 12-dart 301 game; Joe Justice had a 105 open, 135 and a 13-dart 301 game; Fred Spencer had a pair of 95s; and Bill McClanahan had a 92 open.

Windjammer II defeated Raw Bar with Scott Brown hitting a C-6, a 140 and a 121. Ron Harvel had three corks and a 127 and Willie Williams a C-7 and a 95 for Windjammer II. For Raw Bar, Chris Houk had a 116 and a pair of tons.

Nut-n-Honey edged Walt's Deuces Wild with Howard Knupp

throwing three corks, a 120 open and a 95; Bill Starnes had a 114 for Nut-n-Honey. For Walt's I, John Quattlebaum had three corks, a 95 and back-to-back tons in 501, and Lisa Johnson had a 115.

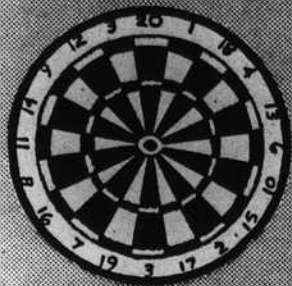
Windjammer III took Walt's II Dream Weavers, with Roger Sigmon hitting a 171 and Cornbread Cornwell hitting a 136. For Walt's, Robbie Neal had three tons, Jimmy Martin had a 120 and Debbie Ragsdale had a 91 open in oh-one.

The final two games had scores of 16-3. Oarhouse IV was able to slip out of the bottom of the standings by winning its second in a row, this time over Moose Lodge. Bill Capps and Chris Foster had tons for Oarhouse IV and Judy Brown had one for Moose.

Oasis Beach Club I upset O.B.C. Boom Waka Waka. J. R. Goad set the pace for Oasis I with a C-6, a C-7 and a 140. James Haas had a pair of tons and a 120, "Dr. Z" Zagora had a ton and Poncho Martinez had a 104 for Boom Waka Waka.

In other league news, the executive board and captains met and voted to split the league into two "equal" divisions, a move which will shorten the season by a month. The teams will play two rounds within their division and then have a playoff to decide the league champion.

Southport-Oak Island Dart League



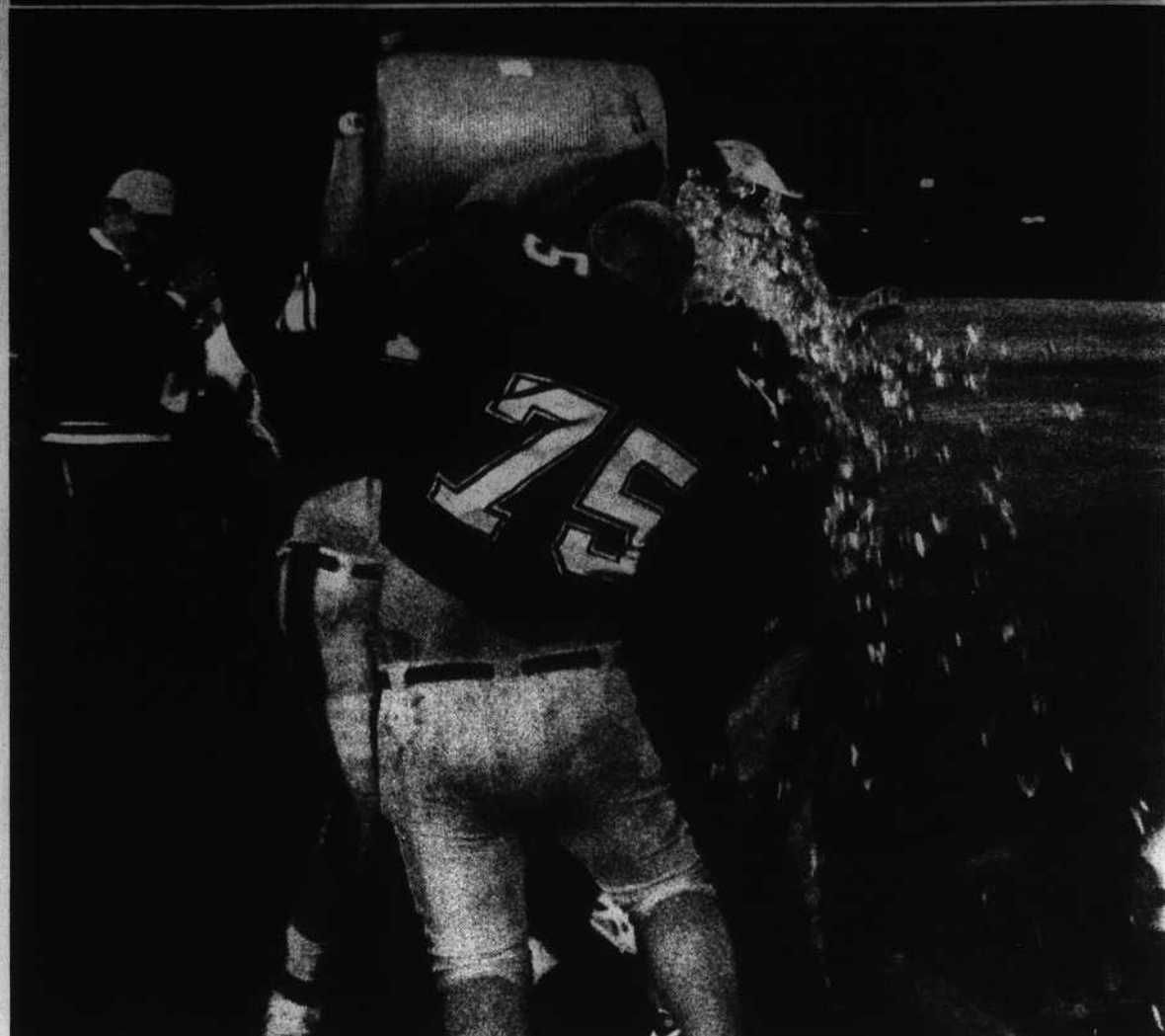
Standings for December 1, 1992

TEAMS	WINS	LOSSES
Oarhouse II	10	0
Oarhouse I	10	2
The Gallery	9	1
WD 40 (Skippers)	8	3
Skippers I	8	3
Windjammer III	7	3
Windjammer II	7	3
The Raw Bar	5	6
Oasis Beach Club II	4	6
Skippers Dyno-Flites	4	6
Walt's Beach Club II	4	7
Oarhouse III	4	7
Moose	2	8
Oasis Beach Club I	2	10
Oarhouse IV	2	11
Walt's Beach Club I	1	11

Matches for December 15

Walt's Beach Club I at Oarhouse I
Windjammer II at Oasis Beach Club II
Oarhouse Nut-n-Honey at Skippers WD 40
The Gallery at Oarhouse Wizards
Windjammer III at Skippers Dyno-Flites
The Raw Bar at Moose
Skippers I at Walt's Beach Club II

CELEBRATION



West Brunswick head coach Jim Brett gets his "coach of the year" award early Friday night as his Trojans advanced to the state 2A finals for the sec-

ond straight year. They meet undefeated Maiden on Saturday; kickoff is at noon in Kenan Stadium on the University of North Carolina campus.

Trojans

Continued from page 12

lead. With crisp blocking, the broken-field running of Holmes, the power running of Butler and the speedy threat of William Stanley, West Brunswick can play a lot of defense while on offense -- grinding out huge chunks of yardage on offense, keeping the ball away from its opponent as the scoreboard clock ticks off valuable minutes.

Do the Trojans have one more great game in them? Can they shut out their fifth consecutive opponent in the second half? Can they wear down Maiden in the second half?

Is the state title finally theirs for keeps?

NOTICE... Santa's already been to Ocean City Chevrolet-Geo

Now through December 31 all reasonable offers on all 1992's will be accepted.
They must go!



1992 SILVERADO PICKUP

Stock #1367
A/C, tilt wheel, speed control, power windows, power locks, AM/FM stereo

MSRP	\$19,244.00
GM SAVING	-1,000.00
OCEAN CITY SAVING	-2,230.24
TAX & TAG	+536.91
NET	\$16,550.67
GM REBATE	-300.00
CASH DOWN	-1,500.00
NET	\$14,750.67

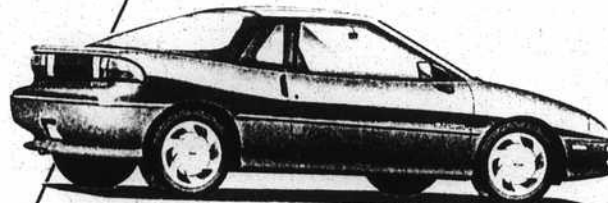


1992 FLEETSIDE PICKUP
SAND BEIGE MET / CRIMSON RED
GARNET CUSTOM CLOTH BENCH
ORDER NO. 6292V0/TNS
VIN 1GC EC14 K4 N110824 STOCK NO 447

CHEVROLET MOTOR DIVISION
GENERAL MOTORS CORPORATION
WARREN MI 48090

MODEL & FACTORY OPTIONS
CC10903 FLEETSIDE PICKUP
GUA REAR AXLE - 3.08 RATIO
L05 5.7 LITER EFI V8 GAS GM ENGINE
MX0 4-SPD. AUTO. IN U.S. OR CANADA
V83 CHROMED REAR TRANS. W/OVERDRIVE
V27 FRONT RUB STEP BUMPER
XFN FRONT BLACK STRIP
YFN REAR STEEL BUMPER GUARDS
ZFN REAR STEEL BELT WHITE LETTER
ZFN SPARE TIRE P235/75R 15
ZFN STEEL BELT WHITE LETTER
ZFN STEEL BELT P235/75R 15
ZFN DELUXE TWO-TONE PAINT
15D PREFERRED EQUIPMENT GROUP P144
CONSIST'S OF: SAVINGS W/ MINIMUM
SILVERADO TRIM
AIR CONDITIONING
CONVENIENCE GROUP - TILT
STEERING AND SPEED CONTROL
WINDSHIELD GROUP - POWER
ELECTRONICALLY TUNED LOCKS
STEREO RADIO WITH SEEK-SCAN,
DIGITAL CASSETTE TAPE AND
AUXILIARY CLOCK
LINELESS LIGHTING
LINE EXTERIOR BELOW-EYE-
GROUP EQUIPMENT
47D GARNET SAVING
57U SAND BEIGE MET / CRIMSON RED

OCEAN CITY CHEVROLET-Geo
P. O. BOX 2320
SHALLOTTE NC 28459-2320



1992 STORM GSI SPORTS COUPE

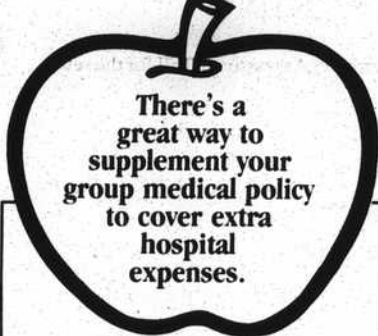
Stock #1475
DOHC, A/C, AM/FM stereo, cassette

MSRP	\$14,560.00
OCEAN CITY SAVING	-1,187.52
TAX & TAG	+457.67
NET	\$13,830.15
GM REBATE	-1,500.00
CASH DOWN	-1,500.00
NET	\$10,830.15

Try us...Make us an offer below invoice!!!

Ocean City

SALES • SERVICE • PARTS
Hwy. 17 N., Shallotte • 754-7117
1-800-242-0373



There's a great way to supplement your group medical policy to cover extra hospital expenses.

Ask About Health Insurance The State Farm Way



CALL ME.
Dwight Flanagan
Bus: 457-4434
754-9923
Res: 457-9426

Like a good neighbor, State Farm is there.



State Farm Mutual Automobile Insurance Company
Home Office: Bloomington, Illinois



Golf & Country Club
St. James Plantation
Hwy. 211 • Southport, N.C. 28461

Winter Special

It will make you feel warm just thinking about it.

\$22.50

includes cart & greens fee

Call for tee times:
1-800-247-4806