

The State Port

INSIDE

Sports, page 9

Classifieds, p. 1C

Southport, N.C.'s most complete listing of available real estate properties



Volume 62/ Number 26

Southport, N.C.

February 17, 1993/ 50 cents

School board taking aim at weapons problem

By Marybeth Bianchi
Feature Editor

Board of education member Polly Russ said it's not unusual for her son and other West Brunswick High School students to head to class directly from an early morning hunting trip.

But in doing so, they are violating the law. That shotgun they may have so innocently carried to school is a weapon and is prohibited from campus by state and federal law.

Soon, Brunswick County schools will be cracking down on those students, and others who intentionally bring weapons on campus to cause trouble or threaten someone.

In a four-hour workshop Thursday, the board of education ironed the wrinkles out of a complicated, yet important policy designed to ensure the safety of students and teachers in school.

School law attorney Richard Schwartz of Raleigh led the board members

step-by-step through a proposed weapons policy. No formal action was taken; Schwartz said he would compile the board's recommendations into a draft of a policy the board could act on at its March meeting.

"One of the key pieces on dealing with weapons in schools is educating students and parents, and letting them know what your tolerance level is and what can happen," Schwartz told the board.

The policy has four parts:

- Banning weapons and facsimiles of weapons prohibited by law.
- Sanctions for possessing a weapon.
- The appeals process for students found to be possessing a weapon.
- Criminal prosecution.

Schwartz told the board there is a little known state law that prohibits anyone from carrying a weapon onto school property.

"If they had a weapon, and they had it on school grounds, it's against the law," he said. If convicted, the individual is guilty of a misdemeanor and can receive a fine of up to \$500 or six months imprisonment.

According to the Crime Control Act of 1990, federal law prohibits the possession of a firearm within 1,000 feet of a school, Schwartz said.

"The sanction is substantial," he commented. It's a fine of \$5,000 and/or five years in prison. As people become aware of the law, Schwartz said he expects to see more federal prosecution of students carrying guns on school campuses.

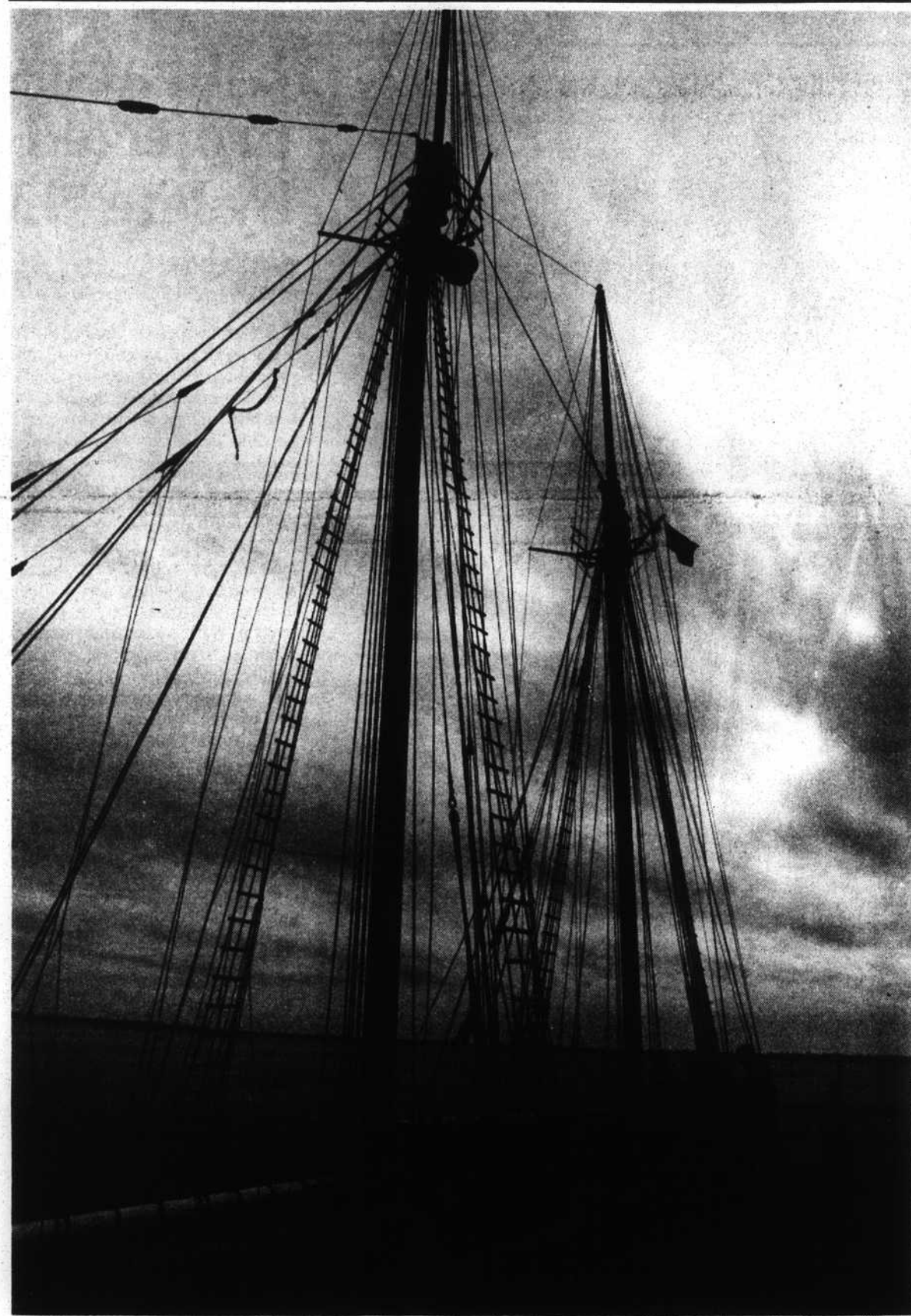
However, because students are, in most cases, juveniles, what the court system does with weapons-possession cases brought before it is beyond the school system's control, "but it can be influenced by what the school says," Schwartz commented.

The state legislature is currently considering a law taking parents to court if their child carries a weapon onto school property, Schwartz said, and some school districts have already included it in their weapons policies.

WEAPONS BANNED

Using the legal basis to ban weapons from school grounds, school board members agreed that facsimiles of weapons could be just as dangerous as

See Weapons, page 6



Towering masts of the schooner *Pilot* beckoned to harborwatchers all weekend at the Southport city pier. The 150-foot (125-foot mainmast) sailing vessel

put into harbor last Thursday because of an injured crewman and remained here for rest and repairs through Sunday afternoon.

Photo by Jim Harper

CP&L hit for \$225,000

Fine the largest ever for Brunswick plant

By Jim Harper
Staff Writer

The Nuclear Regulatory Commission has fined Carolina Power and Light Co. an extraordinary \$225,000 for neglecting to fix walls in the Brunswick nuclear plant diesel generator building that did not meet earthquake-proof standards.

Repairs to the walls necessitated the shutdown of both Brunswick nuclear generating units last April 21, and while that deficiency has been corrected the trouble-laden plant remains closed and under close NRC scrutiny while many other repairs and maintenance deficiencies are being addressed.

The NRC noted in levying the fine that CP&L had known about the sub-

'Your untimeliness in analyzing an identified deficiency and your inadequate analysis ... led to the continued operation of the plant in an unacceptable condition until April, 1992.'

Stewart Ebnetter
NRC administrator

standard walls for five years, yet did nothing about them until prodded by NRC inspectors in a special inspection last spring.

The fine is the most recent in a

series of penalties and bad grades CP&L has received from the NRC.

Last week the NRC decided to keep the Brunswick plant on its "watch list." See CP&L fine, page 12

Long Beach

Board solicits help in marsh ownership

By Holly Edwards
Municipal Editor

To decipher the rules determining when the state can lay claim to marshland and wetlands -- and settle some property disputes -- the Long Beach Town Council agreed Tuesday night to request the assistance of the state property law office.

In particular, council members want to know what portion of the land along Davis Canal can be purchased by private property owners. Some developers who buy property along the canal may not own as much land as they think.

"That land has been in question for a great deal of time," said council member Horace Collier. "It's time to take the initiative."

A proposed Pelican Point subdivision located along the canal was recently denied because the town council could not agree on whether the houses fronted on the marsh or on the canal, Collier said. A town ordinance requires houses to front either on the street or on the canal, and not on the ocean or marsh.

The subdivision, submitted by Hoboke, Inc., would be located be-

See Long Beach, page 5

\$250 prize in mystery product test

Some of them are common, everyday products you may regularly purchase. But do you know how much you pay for them?

The *State Port Pilot* is testing your knowledge in this week's Mystery Product Contest.

Thirty-two items and the businesses where they can be purchased are featured. The object of the contest is to visit each store, find the mystery product and write the price down on the official entry form.

A winner will be randomly selected from all correct answers received at the *Pilot* office by noon Friday, March 5.

A \$250 grand prize will be awarded. If the winning entry includes a signature from each store, it will be worth \$350.

Still slightly over budget

City Riverwalk back on path

By Holly Edwards
Municipal Editor

Even without a Bay Street beach access, a gazebo and a lighting system, the pared-down Riverwalk project is still estimated to cost about \$4,500 more than anticipated due to inflated lumber prices, public services director Ed Honeycutt told the board of aldermen Thursday night.

Honeycutt said he hoped to get project costs down to within \$6,000 of the original amount budgeted for the project, but skyrocketing lumber prices will require the city to fork over an additional \$10,586.

"The demand for lumber is up, the supply is down and the price has gone through the roof," Honeycutt declared. The city has sent two letters to the state CAMA office

requesting the reduction in scope and a three-month extension of the grant deadline. Currently, the terms of the \$75,000 state grant require the city to spend those funds by March 31.

Although CAMA has not yet officially responded to the city's requests, Honeycutt said CAMA planning coordinator Haskell Rhett has assured him that approval will come soon. And as soon as CAMA gives the go-ahead, he said, the contractor will start building.

Honeycutt also said Rhett told him the city can apply for additional grant money after March 1.

The proposed funding for the pared-down project includes the \$75,000 state grant, a \$29,966 cash match from the city and \$12,000 worth of in-kind services by city

See Riverwalk, page 12

'The demand for lumber is up, the supply is down and the price has gone through the roof.'

Ed Honeycutt
Public services director

OUTSIDE



Tide table

HIGH	LOW
THURSDAY, FEBRUARY 18	
5:54 a.m.	11:56 a.m.
6:05 p.m.	----- p.m.
FRIDAY, FEBRUARY 19	
6:38 a.m.	12:09 a.m.
6:47 p.m.	12:39 p.m.
SATURDAY, FEBRUARY 20	
7:19 a.m.	12:52 a.m.
7:27 p.m.	1:19 p.m.
SUNDAY, FEBRUARY 21	
7:55 a.m.	1:32 a.m.
8:04 p.m.	1:56 p.m.
MONDAY, FEBRUARY 22	
8:29 a.m.	2:10 a.m.
8:37 p.m.	2:32 p.m.
TUESDAY, FEBRUARY 23	
9:01 a.m.	2:47 a.m.
9:12 p.m.	3:06 p.m.
WEDNESDAY, FEBRUARY 24	
9:32 a.m.	3:25 a.m.
9:44 p.m.	3:41 p.m.

The following adjustments should be made:
Bald Head Island, high -10, low -7; Caswell Beach, high -5, low -1; Southport, high +7, low +15; Yaupon Beach, high -32, low -45; Lockwood Folly, high -22, low -8.

Forecast

The extended forecast calls for partly cloudy skies Thursday with highs in the 40s. Colder weather Friday and Saturday, with highs between 30 and 40 and lows at night in the 20s. Warmer Sunday, with highs in the 60s and lows in the 40s under variably cloudy skies.