

# Long, tall petunias in garden

By Bruce Williams, Ph.D.  
Brunswick County  
Cooperative Extension Service

Dear Plant Doctor:

My marigolds and petunias are growing tall and leggy with only one or two blooms at the top of the plant. I have kept the old blooms clipped off and removed the sucker leaves from the bottom of the plant. What should I do to get full bushy plants? Also, is water processed through a water conditioner better or worse for my plants than water straight from the well? Thanks for your help.

Answer: Inadequate light or water, the inappropriate cultivar, poor soil fertility, disease, herbicides or high plant density can cause legginess in vegetable and flowering plants. Full sun, water and a balanced diet of plant nutrients are the best guarantee for healthy, full blooming marigolds and petunias. I am sending you a brand-new publication titled "Selection and Use of Stress Tolerant Bedding Plants for the Landscape" by Dr. Doug Bailey. This publication will help you determine and solve the problem with your plants.

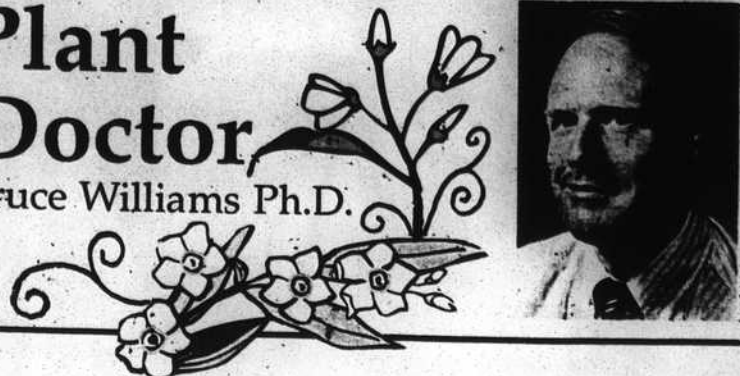
Your question regarding water cannot be answered without knowing more about the chemistry of the water from your well or water conditioner. The North Carolina Department of Agriculture in cooperation with the N. C. Cooperative Extension Service offers a water testing analysis for irrigation water. This test will determine the suitability of your well water or conditioned water for irrigating plants. Taking a proper water sample is critical. Contact your local N. C. Cooperative Extension Service office for forms, information regarding sampling techniques and other pertinent information. A complete water analysis for irrigation purposes costs only \$4.

Dear Plant Doctor:

"Restricted Use Pesticide". Records and a paper trail must be kept for anyone using restricted use pesticides. The appropriate pesticide license can be obtained following an educational program and test administered by the N. C. Cooperative Extension Service and the North

## Plant Doctor

Bruce Williams Ph.D.



I have some pussy willows taking root in water. There are new leaves popping out all over the stem. Where and how should I plant these cuttings outside? Any tips you could give me would be appreciated.

Answer: Transplant rooted pussy willow cuttings into a sterile potting soil mix and use a small plastic or clay pot with adequate bottom drainage. Keep the newly transplanted plant in a partially shaded, protected environment until shoot growth continues and root growth fills up a large portion of the soil volume in the pot. Gradually harden-off young plants by moving outside to a partially shaded area. Transplant to a sunny, wet site which soil has been properly cultivated and amended with fertilizer, then step back! The native pussy willow (*Salix discolor*) is a fast-growing, hardy shrub native to wet places in the eastern United States.

Dear Plant Doctor:

I recently was told by a clerk at the garden store that I had to have a license to buy certain insecticides. I do not understand the licensing requirement; please explain in simple English without all that government gibberish. All I want to do is kill the bugs eating up my garden. Your help will be appreciated.

Answer: North Carolina has some of the most prudent pesticide licensing laws in the United States. A license is required by private (farmers or home gardeners) and commercial applicators to purchase and use any pesticide classified by the EPA as a

Carolina Department of Agriculture.

If you apply any pesticide to land other than property you own or lease, then a commercial pesticide license is required by federal and state law. A commercial pesticide license is required if you are required to spray any pesticides for your job or you are applying pesticides for pay.

Please call your N. C. Cooperative Extension Service office for additional information concerning pesticide use or licensing.

Send your comments or gardening questions to The Plant Doctor, P. O. Box 109, Bolivia, NC 28422.



Southport mayor Norman Holden (above) and city manager Rob Gandy ate lunch with the preschoolers at Robin's Nest Friday in observance of National Children's Day.

## Butcher Shop



We Reserve The Right To Limit Quantities. Prices in this ad good Wednesday, June 2 thru Tuesday, June 8, 1993.



### Whole Bottom Rounds

**\$1.49** Lb. **Save 50¢ per lb.**

USDA Choice Beef Untrimmed 20-22 Lbs. Avg. (Sliced FREE!)

### Boneless Pork Loins

**\$2.99** Lb. **Whole**

Extra Lean 5-7 Lbs. Average (Sliced FREE!)



### Smithfield Bacon



**99¢** Lb.

### USDA Choice Beef Bottom Round Roast

**\$1.99** Lb.

### Country Pride Breast Filets & Tenders



**\$2.99** Lb.

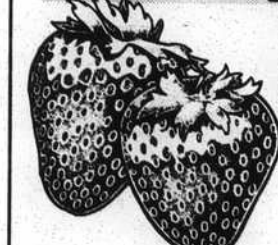
### Center Cut "Boneless" Pork Chops



**\$3.59** Lb.

## Produce

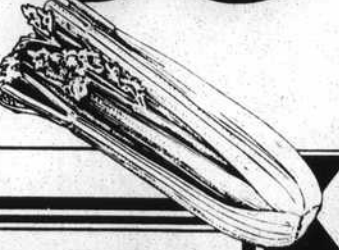
### Red Ripe Strawberries



**\$1.29** Quart

Lb. - Fresh Green Beans/Tender Yellow Squash/  
Fresh Pickling Cucumbers/  
Genuine Vidalia Onions/  
Stalk - Crisp Crunchy Celery

**69¢**



## Extra Low Prices!

### Kellogg's Cereal

**\$1.09** 6 Pack  
Reg. \$2.11



### Gatorade

**\$1.79** 64 Oz. All Flavors  
Reg. \$1.99



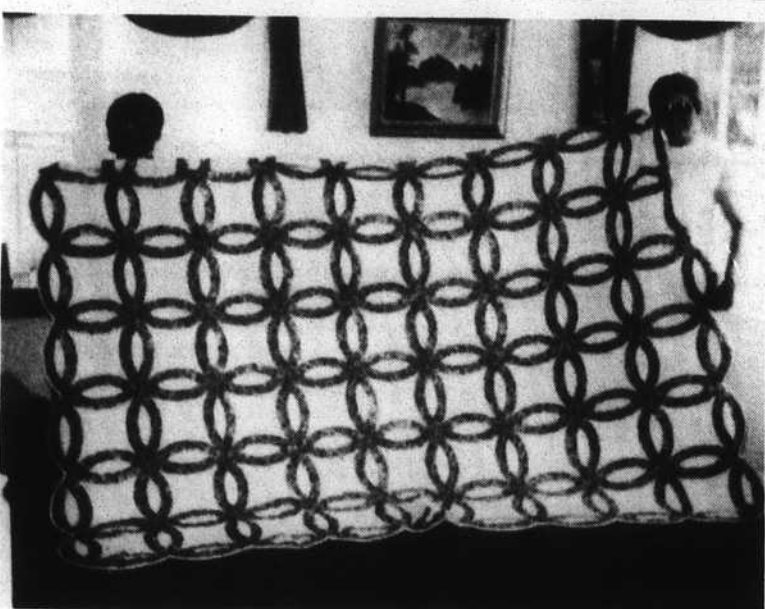
### Star Kist Tuna

**2/\$1** 6.125 Oz. - Lt. Chunk In Water  
Reg. 2/\$1.09

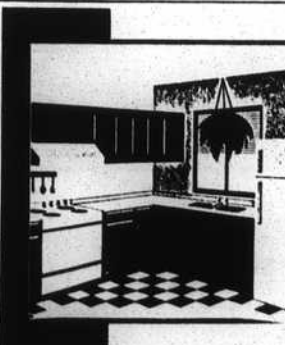


**Pet Pie Shells**  
**99¢** 2 Ct.  
Reg. \$1.09

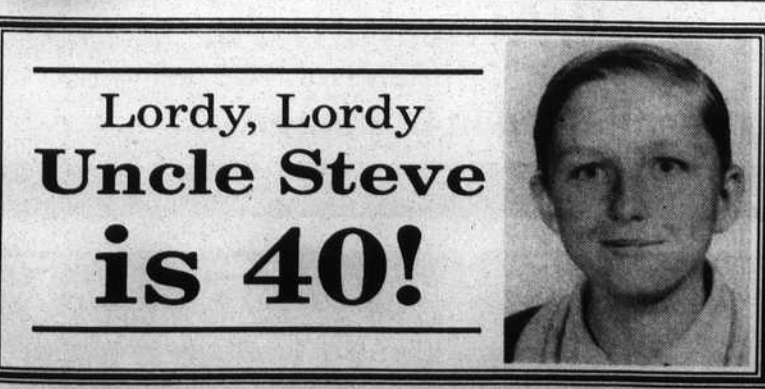
2 Liter - Diet Pepsi, Caffeine Free Pepsi, Caffeine Free Diet Pepsi, Mt. Dew, Diet Mt. Dew, Crystal Pepsi, Diet Crystal Pepsi  
**Pepsi Cola**  
**99¢** 2 Liter - 7-Up, Diet 7-Up 1.09



Tickets will be available for a quilt to be raffled off during the N. C. Fourth of July Festival. It is queen size with a double wedding ring design. The quilt is given by the 55 and Over Club.



**Magic Maids**  
We'll make housework disappear like magic!  
Residential • Commercial  
Reasonable Rates  
253-7429 • 845-8623



**Lordy, Lordy Uncle Steve is 40!**

**BRUNSWICK LP GAS CO.**  
37 River Rd. (Hwy. 133), Belville, NC  
We are Brunswick County's exclusive distributor of Duane Gas Grills.  
**Duane GAS GRILLS**  
"Simply the best!"  
**371-5565**  
Mon. - Fri.: 8 - 5:30  
Saturday: 8 - 3:00