

The State Port

P.I.O.

INSIDE

Sports, page 3B

Classifieds, p. 1C

Southport, N.C.'s most complete listing of available real estate properties



Volume 63/ Number 8

Southport, N.C.

October 13, 1993/ 50 cents

Limestone quarry near Southport

Opposition digging in to halt mine operation

By Terry Pope
County Editor

Brunswick County commissioners say they plan to dig into the controversy surrounding a proposed limestone mine just north of Southport.

One area group says it may challenge county zoning laws that allow the mine, while town officials are hurrying to approve statements opposing the project.

A resolution to be introduced at Monday's commissioners meeting calls for a hearing between Martin Marietta Aggregates Inc. and Southport area residents who are concerned about the mine's possible impact on the community.

Residents' reaction; M-M position, pg. 8

Saying he was "surprised and upset" that the company failed to schedule a countywide meeting, chairman Don Warren said Friday he and District 3 commissioner Wayland Vereen plan to introduce the resolution next week.

"I'd like to see Martin Marietta come out in a hearing and answer the questions," said Warren. "Really, they need to get out and make themselves known. I think it will help everybody."

Martin Marietta met informally with residents who live on Bethel Church Road, adjacent to the mining site, and

held a press conference to unveil its plan last month.

However, a recent wave of opposition has swept the community since the company said it would apply for state mining permits, with hopes to begin digging within nine to 12 months. Twin pits would lie between Bethel Church Road and the access road to Military Ocean Terminal Sunny Point, off N. C. 87/133 north of Southport.

A deed recorded September 22 at the Brunswick County Register of Deeds office shows more than 250 acres exchanged hands between the Pfizer Corp. and Martin Marietta, generating \$1,198 in real estate tax.

See Martin, page 8

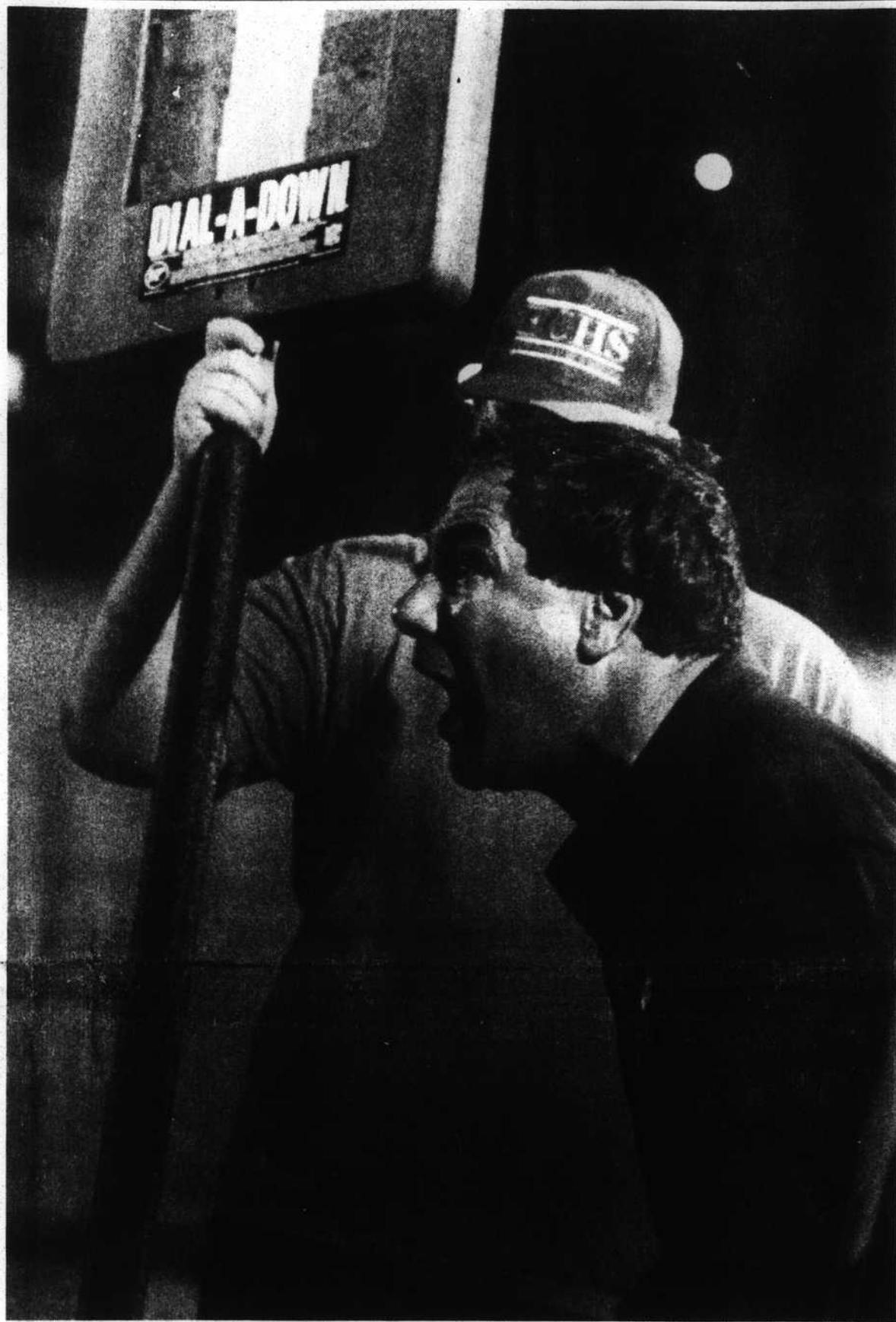


Photo by Ed Harper

Can South Brunswick head football coach Bill Hewett get up for a game, or what? Hewett, here as a referee's call during last week's 29-28 win over East Columbus, will be pacing the sidelines Friday night when his Cougars host Whiteville, a team he coached in the mid-1980s. Gametime 7:30.

State law takes effect

Smoking ordinance draws its last breath

By Terry Pope
County Editor

A surprise abstention allowed opponents to defeat a controversial smoking control ordinance Monday, 4-3.

Harry Johnson, a member of the Brunswick County Board of Health, said both the state ordinance that takes effect Friday and a proposed county

ordinance encroach on private citizens' rights "to run a business the way they want to run it."

"Because we are in a kind of dilemma, I've elected to abstain from voting," he told the board.

Johnson had earlier spoken in favor of the ordinance that would have required restaurants to set aside no-smoking quarters served with separate heat and air systems.

Johnson's abstention surprised chairman Maliston (Moe) Stanley, who said later he was prepared to break a tie vote to pass it.

Members Patrick Newton, Bruce Quaintance, Don Warren and Arthur Knox voted it down. In favor were Patricia Nutter, Jeffery Mintz and Brad Kerr, who chaired a committee that drafted the rules.

The meeting held many surprises other than Johnson's non-vote:

•Ms. Nutter, on vacation this week, had earlier said she wouldn't attend the meeting, but did;

•Joey Galloway, who had supported smoking controls, reported sick Monday afternoon and did not attend;

•George Young not only didn't attend but forwarded his letter of resignation from the board.

His seat is an at-large county position, not held by a professional, and will be filled by Brunswick County commissioners. In his letter, Young stated it was impossible to balance his work and family and still be an effective member of the board.

Stanley said the board follows the Roberts' Rules of Order that allow board members to abstain. The chairman only votes to break a tie, and Stanley had kept his position secret prior to Monday.

"I would have voted for it," said Stanley.

See Smokers, page 6

Food service rules put back on table

By Terry Pope
County Editor

A brief but tense debate Monday forced health board members to table an ordinance to establish a county food service certification program.

Chairman Maliston (Moe) Stanley called for a vote to adopt the proposal which has been before public hearings twice and revised from an earlier draft in April.

But objections were then raised by members Bruce Quaintance, Patrick Newton and Don Warren.

Quaintance said he asked health director Michael Rhodes for a copy of the rules two months ago and did not see the policy until 5 p.m. Thursday.

The final draft of the "Rules Governing Food Service Manager Certification for Foodhandling Establishments in Brunswick County" offers six classroom

See Food, page 6

Candidates' use of mailboxes gets the stamp of disapproval

By Holly Edwards
Municipal Editor

Some Long Beach candidates' campaign fliers have been placed in residential mailboxes without stamps, and postmaster James Hardy reminded all candidates this week that private use of mailboxes is a violation of federal postal laws.

"A lot of people don't realize a

mailbox belongs to the post office, it belongs to the government," he said. "The only thing that can go into it is your mail. Private use is strictly against postal regulations."

Hardy said he believes candidates made an "honest mistake" and all have agreed to pay the required postage. However, if any fail to pay the charges, Hardy said he will turn the case over to federal postal inspectors for prosecution.

"If they don't pay I can assure you I'll contact the postal inspector," Hardy promised.

Council candidate Timothy Jones, who was eliminated from the Long Beach council race last week, was apologetic, the postmaster said, and immediately paid the required postage. Hardy said he did not remember

See Mail, page 6

Follow-up tests at Long Beach

Water survey results unclear

By Holly Edwards
Municipal Editor

Results of surface water testing recently conducted in Long Beach were forwarded this week to the state Division of Environmental Management office, and town manager Tim Johnson said he will do whatever the state advises.

Environmental engineer Ed Beck is expected to provide the town with a written summary of his opinion on the findings this week.

"We're going to do whatever we have to do," Johnson promised.

"We're not going to run the risk of letting our citizens get sick."

Twenty-one random sites were selected in ditches, ponds, creeks and canals throughout town. Johnson said he and public works

director Charles Derrick tried to select diverse sites that would represent a variety of situations.

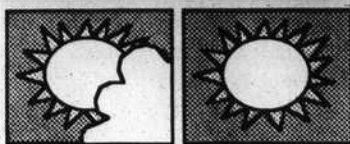
Five of those sites harvested fecal coliform counts of more than 200 colonies per 100 milliliters of water, and seven of the sites registered a fecal coliform to fecal streptococcus ratio of greater than one. Three sites indicated possible "toxic interference."

Beck agreed it is safe to suspect the presence of human waste if there are a large number of septic tanks in the area and the fecal coliform count is greater than 200 colonies per 100 milliliters of water, or the ratio is greater than one.

However, he explained that the ratios are valid only if the fecal streptococcus count is greater than 100, and pointed out that only

See Water page 6

OUTSIDE



Tide table

HIGH THURSDAY, OCTOBER 14 LOW
7:27 a.m. 1:09 a.m.
7:45 p.m. 1:42 p.m.

FRIDAY, OCTOBER 15
8:21 a.m. 1:58 a.m.
8:37 p.m. 2:35 p.m.

SATURDAY, OCTOBER 16
9:13 a.m. 2:48 a.m.
9:29 p.m. 3:26 p.m.

SUNDAY, OCTOBER 17
10:06 a.m. 3:36 a.m.
10:21 p.m. 4:17 p.m.

MONDAY, OCTOBER 18
10:59 a.m. 4:26 a.m.
11:13 p.m. 5:09 p.m.

TUESDAY, OCTOBER 19
11:53 a.m. 5:17 a.m.
----- p.m. 6:02 p.m.

WEDNESDAY, OCTOBER 20
12:08 a.m. 6:09 a.m.
12:50 p.m. 6:58 p.m.

The following adjustments should be made: Bald Head Island, high -10, low -7; Caswell Beach, high -5, low -1; Southport, high +7, low +15; Yaupon Beach, high -32, low -45; Lockwood Folly Inlet, high -22, low -8.

Forecast

The extended forecast through Saturday calls for partly cloudy skies. Highs during the period are expected to be in the 70s; nighttime lows are forecast to be in the middle 50s.