

May 31, 1995



Neighbors

Students assist project to identify old graves in Southport cemetery

The State Port PILOT

VOLUME 64/ NUMBER 40 SOUTHPORT, N.C. 50 CENTS

Sports

South Brunswick athletes were recognized Tuesday during awards banquet

Our Town

Oak Island seniors now have a first-class center to meet, hold activities

Brunswick EMS comes to the rescue

By Richard Nubel
Municipal Editor

The call came in about 9:10 p.m. Saturday. A Memorial Day weekend visitor to a west-end cottage at Holden Beach had been suddenly stricken. Dialing 9-1-1, the caller couldn't give the telecommunicator at Brunswick County's Central Communications Center, C-COM, a very good description of the patient's condition, so it was dispatched as "an unknown medical emergency."
"Let's go," said emergency medical services shift supervisor Terri Davis as she climbed into her Blazer. As shift supervisor, Davis was "EMS 100" for the evening, and would attempt to make response to this call.
As additional information was provided by Holden Beach police officers, first to arrive at the scene, it sounded as if advanced life support (ALS) capability would be needed.
"In Brunswick County, we have paid professional EMS personnel and we have 12 volunteer rescue squads," Davis said. "When a call comes into the center, the volunteer squad for that area is paged-out along with EMS."
"Hopefully, the volunteer squad will respond to the the scene, make an assessment and determine whether they need us. What we want to do is provide ALS intermediate care."
ALS intermediate care can only be provided by county EMS and volunteer rescue personnel trained as Emergency Medical Technicians-Intermediate --

'Kid calls always disturb us, Your heart goes out to all of them. You learn to cope in your own way. There's just so much you can do for a patient. Then, it's the family.'

Tammy Simmons
EMS crew member

a designation held by all county EMS personnel and a growing number of volunteers countywide who have undergone additional training in advanced life support techniques.
"If the responding rescue squad has EMT-I, it can call us off," Davis said as she sped down old U. S. 17, hitting the U. S. 17 bypass at Supply, red lights circling and siren whirring and whooping at intervals.
Per that response formula station 26, Coastline Volunteer Rescue Squad, had also been dispatched by the C-COM telecommunicator to this scene. EMS

72, the county's ambulance stationed in the south end of the county Saturday night, was just arriving at The Brunswick Hospital with another patient it had helped the Shallotte Volunteer Rescue Squad transport minutes before, otherwise it too would be moving toward the Holden Beach emergency.
For now, however, the crew of EMS 72, Tammy and Gayther Simmons, a husband-and-wife team from Ash, would be tied up.
If ALS was needed and Coastline couldn't provide it, Davis would be the choice.
But this was Memorial Day weekend and Coastline was well-prepared, with three full crews, two ALS-certified.
"We're on the scene," Coastline radioed. "We'll take it, EMS 100. You can 10-22 (disregard)."
The response procedure had worked precisely according to plan. Coastline had arrived and determined the patient had possibly suffered a stroke. ALS would be needed and could be provided by the local rescue volunteers. Coastline would transport. EMS would not be needed this run.

Brunswick County EMS was begun in January, 1992, in conjunction with the county's new 9-1-1 emergency telephone notification system. The EMS mission is, and will be until June 1 of this year, to provide advanced life
See Rescue, page 9

Schools disburse funding

By Holly Edwards
Feature Editor

Capital needs of Brunswick County schools were the focus when the board of education doled out \$283,295 -- the remaining balance from the funding settlement with county commissioners.
The money was part of \$1.35 million additional funds allocated this year by the county to the schools.
All 13 county schools and the central office received a portion of the funding.
Superintendent of schools Ralph Johnston used capital needs established by the school principals in drawing up his recommendation to the board.
Board members said they focused on schools' capital and building needs that were identified by principals as
See Funding, page 11

Reward offer for tree info

By Richard Nubel
Municipal Editor

Wanted: Information leading to the arrest and conviction of that person or those persons who have been maliciously damaging trees in the Oak Island Drive right-of-way.
Convinced the growing number of recently planted trees damaged along the town's major thoroughfare is not accidental, Long Beach Town Council has posted a combined \$1,000 reward.
See Reward, page 10

Sheriff, registrar claim 'misinterpretation'

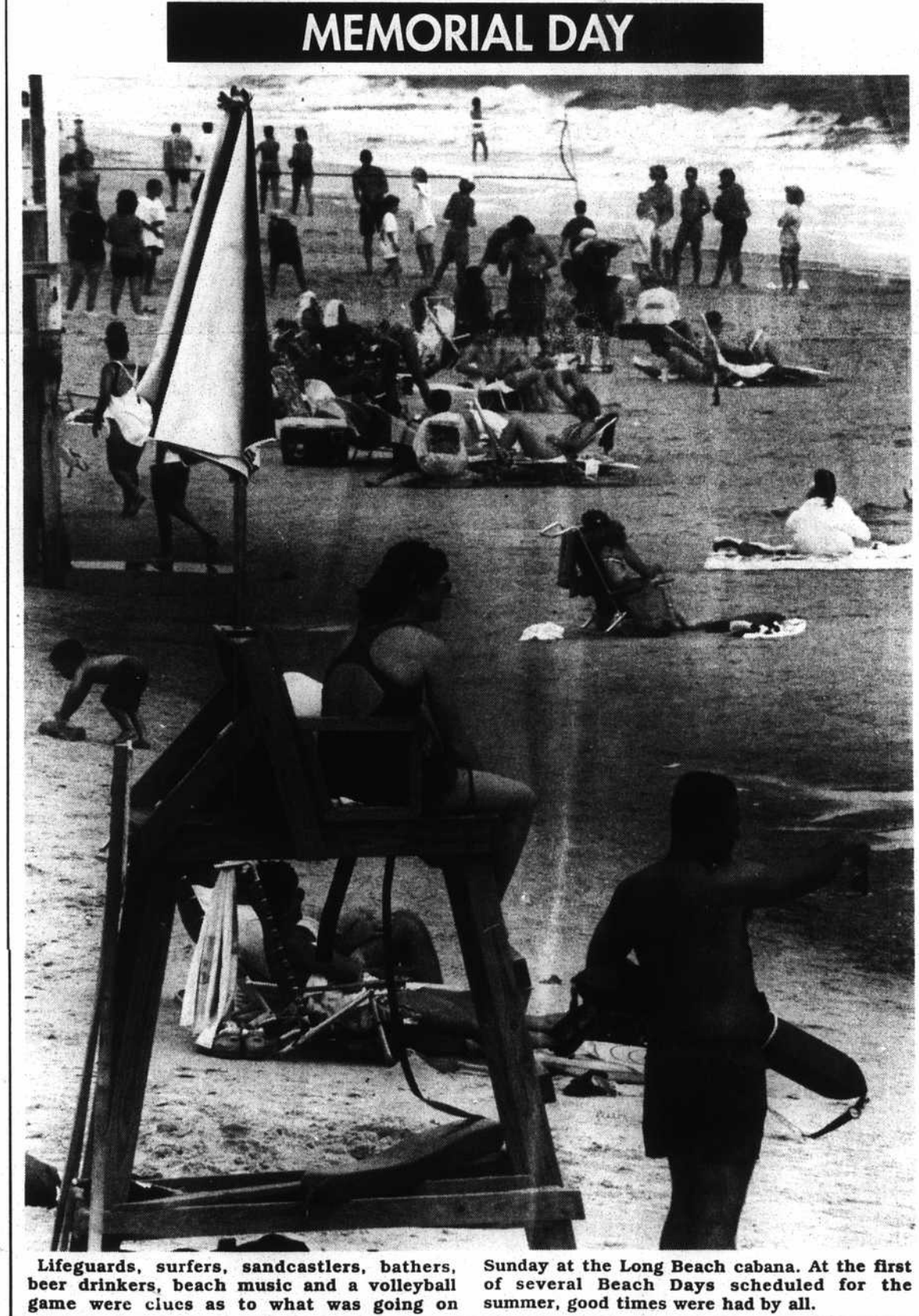
Elected officials raise pay dispute

By Terry Pope
County Editor

How much should both the sheriff and register of deeds be paid in salary has become the \$64,000 question.
During his budget preparations, interim county manager Charles McGinnis discovered what he thought was an error. The amount listed as salary for both sheriff Ronald Hewett and registrar Robert J. Robinson under the 1994-95 county budget is about \$10,000 lower than what the two say they should draw in actual pay.
The current budget lists \$53,230 for sheriff Hewett, who says

by law he is entitled to \$63,437. The same is also true for Robinson, roughly a \$10,000 difference. Since December, the two have been paid based on the higher rate.
When McGinnis recently took administrative action to reduce the elected officials' pay, it sparked a controversy that has spilled over into the courthouse. McGinnis says he has not cut anyone's pay but took action to follow the county budget, which he says is a legal document.
"I think the real question, and you have to ask the sheriff this, is what did he do to get that kind of money?" said McGinnis. "It had to originate from the sheriff."
When Hewett filed to run for sheriff last year, he paid a \$532

fee at the Brunswick County Board of Elections office. That fee is calculated at one percent of the position's actual salary.
"He knew what the salary was and what it was suppose to be," said McGinnis. "That same number is in the budget."
McGinnis says he finds this incident "absolutely, almost unbelievable." It may take a Superior Court judge to settle the dispute, for both Hewett and Robinson say they will amend their lawsuit now pending in court to include the salary case. Earlier this month, the two sued McGinnis and county commissioners over a hiring freeze and questions if the board has
See Dispute, page 11



MEMORIAL DAY
Lifeguards, surfers, sandcastlers, bathers, beer drinkers, beach music and a volleyball game were clues as to what was going on Sunday at the Long Beach cabana. At the first of several Beach Days scheduled for the summer, good times were had by all.

Budget talks

Long Beach may cut out garbage fees

By Richard Nubel
Municipal Editor

In its first two budget workshop sessions, town council has forged a plan to do away with both solid waste fees and municipal vehicle registration stickers, Long Beach mayor Joan Altman said this week.
The result may slightly increase property taxes in fiscal year 1995-96, but will not increase the overall cost of town services to the property owner. Both solid waste and license sticker fees have been the subjects of considerable debate among Long Beach residents for years.
Mayor Altman said council is still at work on the \$5.096-million budget proposal advanced by town manager Jerry Walters May 1, and costs of living in Long Beach this coming fiscal year may be further reduced.
"We're not even halfway through with council's deliberations," Altman said. "There is no way to determine how it will all turn out."
The mayor said council plans to devote at least two more workshop sessions to budget deliberation. General fund expenditures was the subject of council's focus in its first two sessions. Members will finish general fund assessment with concentration on emergency services, then move on to review water, accommodations tax and capital reserve funds.
Clearly the biggest decision of the first two sessions was that involving the town's solid waste collection effort.

'I feel at some time we may return to the fee, but it will be at a time when we can accurately charge each customer.'

Joan Altman
Long Beach mayor

For several years the town has contracted with Waste Management Inc. to collect refuse. The contract cost of collection and disposal has been paid by fees charged residential and commercial customers. Council's decision of last week means the town's general fund -- which derives about 47
See Long Beach, page 11



Forecast

The extended forecast calls for a chance of showers of thunderstorms for the period of Thursday through Saturday with highs in the 80's and lows in the 60's.

Tide table

HIGH	LOW
THURSDAY, JUNE 1	
10:39 a.m.	4:40 a.m.
10:51 p.m.	4:40 p.m.
FRIDAY, JUNE 2	
11:16 a.m.	5:18 a.m.
11:27 p.m.	5:20 p.m.
SATURDAY, JUNE 3	
11:56 a.m.	5:57 a.m.
----- p.m.	6:03 p.m.
SUNDAY, JUNE 4	
12:06 a.m.	6:39 a.m.
12:42 p.m.	6:52 p.m.
MONDAY, JUNE 5	
12:52 a.m.	7:25 a.m.
1:35 p.m.	7:48 p.m.
TUESDAY, JUNE 6	
1:43 a.m.	8:16 a.m.
2:34 p.m.	8:50 p.m.
WEDNESDAY, JUNE 7	
2:41 a.m.	9:13 a.m.
3:35 p.m.	9:55 p.m.

The following adjustments should be made:
Bald Head Island, high -10, low -7; Caswell Beach, high -5, low -1; Southport, high +7, low +15; Lockwood Folly, high -22, low -8.