



Sports

North Brunswick defeats cross-county rival South in the season's opener -- 1C

The State Port

PILOT

VOLUME 65/ NUMBER 29

SOUTHPORT, N.C.

50 CENTS

Neighbors

Some rescue squads pass on the opportunity to collect fees from patients-- Page 2

Our Town

There's nothing like experience, and these students are getting it hands on -- 1B

Widening of U.S. 17 not answer

By Terry Pope
County Editor

County officials don't believe a wider U. S. 17 will solve local traffic problems when a future Interstate 40 bypass around Wilmington opens.

A resolution approved by the Brunswick County Board of Commissioners last week opposes that alternative, which is being considered by the N. C. Department of Transportation.

DOT's planning and environmental branch is beginning studies for a new four-lane, controlled-access highway in northern Brunswick County as a link for U. S. 17 traffic to I-40 and as a freeway that will skirt the Leland and Wilmington communities. The North Brunswick Freeway, as it has been labeled, is in the early planning stages.

Although several preliminary alternatives for its path will be developed in the planning phase, one alternative will be to widen the existing U. S. 17 and U. S. 421 approach to Brunswick County to handle the additional traffic. That will direct more traffic
See U.S. 17, page 8

Attendance rule relaxed for students

By Holly Edwards
Feature Editor

Although the interim superintendent called the attendance rate in Brunswick County schools "atrocious," the board of education Monday night voted 3-1 to approve an amended attendance policy more lenient than the current standard.

The school board hopes to receive feedback on the proposed policy and will review it for final adoption next month.

While the current policy allows students to miss no more than 16 days of school per year, the new policy would allow students in elementary and middle school to miss up to 20 days per school year and high school students to miss up to 30 days, explained Dr. David Corley, director of secondary education. When students exceed the maximum number of allowable absences, they may be retained a grade unless an attendance committee grants a waiver.

Board member Billy Carter voted against the amended policy, saying it provides students with "more methods to get away with something."

"We've gone from ten days to 16
See Attendance, page 8

CARNIVAL TIME

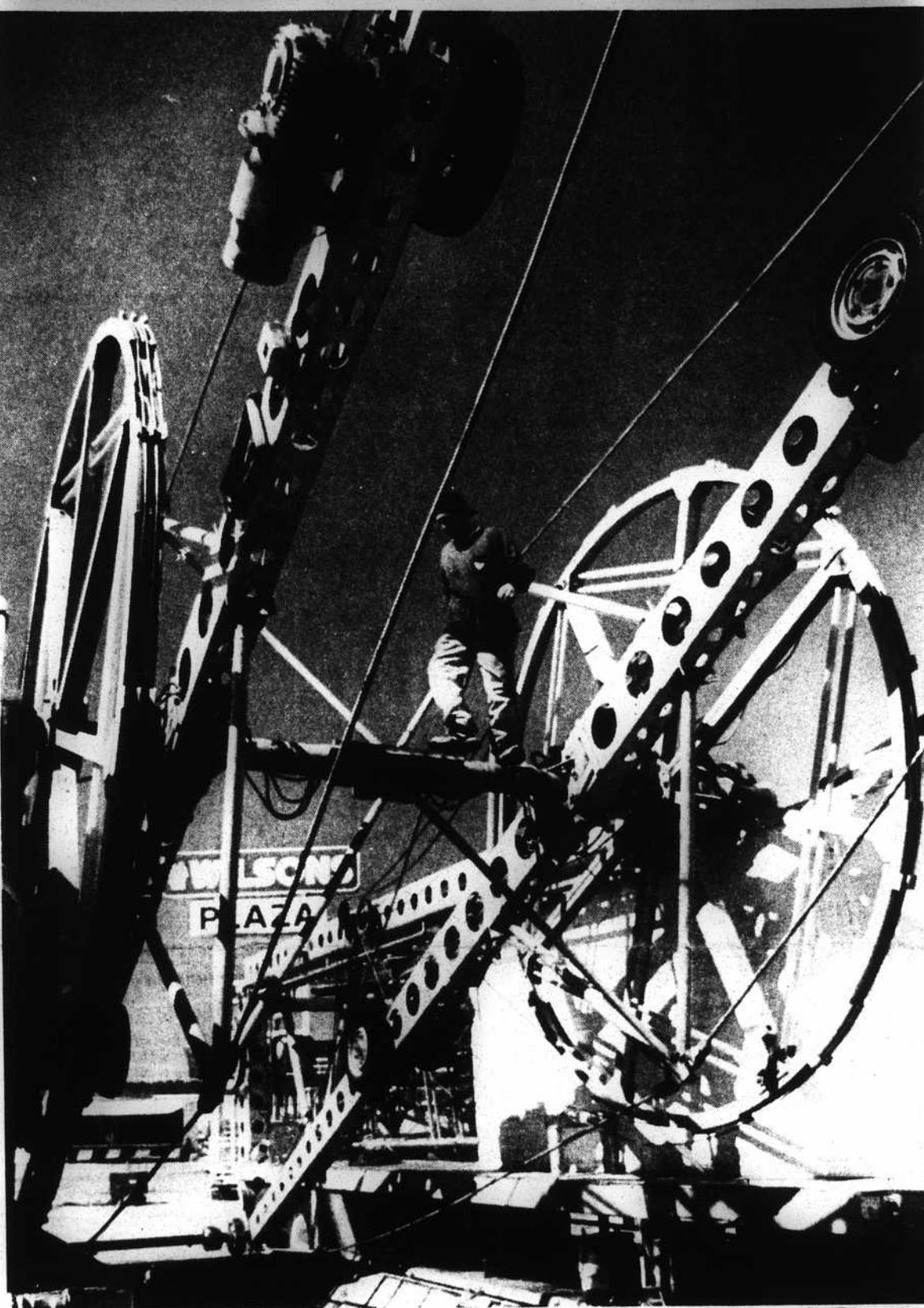


Photo by Jim Harper

Workers were busy Tuesday erecting the Skywheel at Wilson's Plaza, where the Jonny A. Stine Shows will hold forth tonight (Wednesday) through Sunday, and thrills-a-minute can be had by the hour.

Non-hospital holdings

Dosher won't be taxed

By Richard Nubel
Municipal Editor

No property owned by Doshier Memorial Hospital, regardless of the use to which it is put, will be subject to city or county property taxation, Brunswick County tax supervisor Boyd Williamson has ruled.

Williamson's ruling is an acceptance of an opinion by

county attorney Michael Ramos, who consulted with counsel for the hospital and an expert with the Institute of Government at UNC-Chapel Hill.

"It is my opinion that all property owned by Doshier hospital should be tax-exempt," Ramos wrote Thursday. "My suggestion is that we reach an agreement with Doshier that from 1996 onward, all property will be given exempt
See Doshier, page 11

Yaupon wastewater

Revised plans would exclude Caswell Beach

By Richard Nubel
Municipal Editor

Switching direction once again in the town's 20-month effort to locate a disposal site for treated wastewater, Yaupon Beach commissioners Monday night said they will not seek permits to spray-irrigate Oak Island Golf and Country Club property in Caswell Beach.

Instead commissioners, on the recommendation of consulting engineer Robert Graham of Boney and Associates, authorized redesign of the wastewater management system to allow disposal of up to 400,000 gallons of wastewater per day by:

■ Placing 250,000 gallons per day in the town's rapid-infiltration basin next to its Fish Factory Road treatment plant.

■ Spraying 50,000 gallons per day to irrigate some seven acres of woodland the town owns adjacent to the treatment plant.

'Standard Products is under the gun because we can't give them the 40,000 gallons they need. We are going to lose money if we don't do something.'

Dot Kelly
Yaupon Beach mayor

■ Spraying 100,000 gallons per day to irrigate holes 10, 11, 12, 13 and 14 at the country club golf course. Those five holes lie in Yaupon Beach
See Revised, page 13

Following death

North handled situation well

By Terry Pope
County Editor

No college offers high school principals training for what North Brunswick's Bob Harris faced last week.

Instead, the off-campus shooting death of junior Mark Anthony Wescott, 17, of Leland by a classmate tested the veteran administrator's ability to deal with the unexpected -- the grief, wide range of emotions and tensions which a building full of 600 teenagers share once tragedy strikes.

"You saw a lot of different types of emotions -- the most, however, was grief," said Harris. "You never know how any kind of emotion is going to manifest itself, especially when you've got 600 people to deal with. There were all kinds of rumors flying around because of the nature of the incident. And we didn't have any answers for them."

Wescott was killed by a single shot-gun wound to the head Tuesday morning in the home of a 15-year-old schoolmate. Wescott had left school to go there during first period with two other boys.

Brunswick County sheriff's detectives have labeled the incident a negligent act and charged the 15-year-old with voluntarily manslaughter. He will be tried in juvenile court.

But actions in the community often spill over onto the school campus. That's true in any neighborhood. Harris took quick and deliberate steps to keep racial tensions from mounting - Wescott was white, the suspect is
See Handled, page 8



HARRIS

Naked truth:

Nudists colony would be legal

By Terry Pope
County Editor

Supply residents have asked county commissioners to block a proposed nudist campground from locating across from Prospect Baptist Church.

But county zoning regulations allow campgrounds in that rural zone, plus the ordinance doesn't have authority to impose a dress code for persons on private property.

"It's going to be a controversy, and we're going to be the bad guys," said Brunswick County planning director Wade Horne. "The only way to eliminate one where they don't wear clothes is to eliminate all campgrounds. It's not a case of whether we agree or disagree. It's a case of following what the law allows."

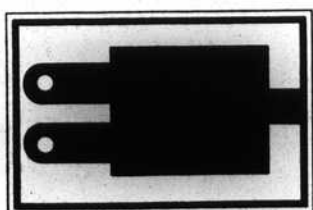
Residents packed the Brunswick County Board of Commissioners
See Nudists, page 11

Lighten the load

Consumers can reduce power costs

By Richard Nubel
Municipal Editor

Base rates for all residential, light commercial and commercial-demand electric customers will decrease if a new rate structure under study by Southport officials is adopted, but usage rate savings will only decrease for those customers who participate in load management.



By participating in load management, the customer allows the city to install a switch on electric water heaters and air conditioning units. At times of peak demand, when wholesale electric costs are highest, the city automatically will cut electric flow to heating and cooling elements on these appliances -- the greatest power consumers in the household.

The proposed new rate structure

will be the subject of a presentation by public services director Ed Honeycutt when aldermen meet in regular session Thursday at 7:30 p.m.

The financial reward of participating in load management will be substantial, a statistical analysis prepared by Honeycutt suggests. Although proposed rates now are not "set in stone," Honeycutt says, analysis to date shows monthly savings for those allowing 100-percent load management of air conditioning units and load management of water heaters could reach \$40 on a 1,000 Kwh purchase.

Most homes use between 900 and 2,000 Kwh of electricity each month, billing data suggests.

See Lighten, page 7



Forecast

Don't like the weather? Just wait a while, it will change. At least that's the way it's been this past week. We can expect much of the same Thursday through Saturday with partly cloudy skies and highs in the mid 60's.

INSIDE

| | |
|----------------|----|
| Opinion | 4 |
| District Court | 13 |
| Business | 14 |
| Obituaries | 17 |
| Church | 5B |
| Schools | 6B |
| Classifieds | 1D |
| Pilot TV | 8B |