



Sports

South Brunswick snaps its eight-game slide with a 3-0 win over the Trojans -- 1C

The State Port

PILOT

VOLUME 66/ NUMBER 32

SOUTHPORT, N.C.

50 CENTS

Nei hili o

A new add cookoff wa for the you

Our ay of 2

Boiling Spr decide againt a boat license

Second bridge in '99

By Richard Nubel
Municipal Editor

Good news for Oak Islanders: The planned second island bridge connecting Middleton Street to the mainland is on schedule for completion in September, 1999.

Although a N. C. Department of Transportation public hearing on three proposed thoroughfare routes between the new bridge and N. C. 211 drew an overflow crowd to the Long Beach Recreation Center last Wednesday night, most in attendance expressed concern for protection of wetlands and for eventual bridge design. Those who did offer comment on the three alternative routes linking the northern end of the bridge to N. C. 211 at Midway Road favored Alternative B, the most direct of the three proposed routes.

More importantly, DOT officials heard no opposition to the bridge, which island officials have actively sought since the early 1980s.

"Nobody spoke against the bridge," Long Beach mayor Joan Altman said. "There was not even much comment on the corridor alternatives."

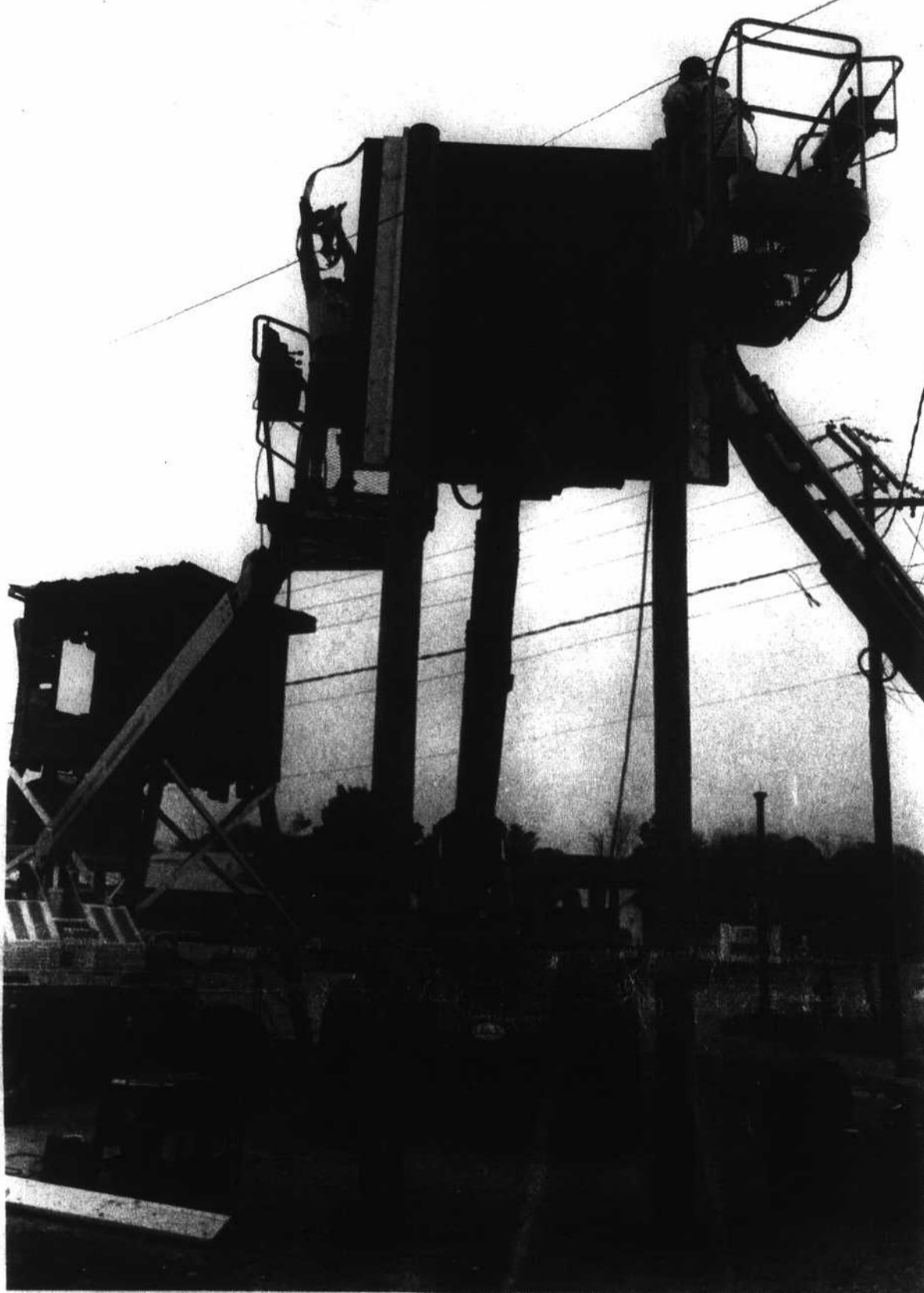
DOT's hearing came after publication of an Environmental Impact Study performed by consulting engineers. The report -- on file for inspection at Long Beach Town Hall -- examined the potential impact of the three proposed overland routes to N. C. 211 on plant and wildlife, wetlands, historic and archeological sites and hazardous material deposit sites. The report also factored noise impact, the need for relocation of residential and commercial interests and interruption of farming activities.

DOT hearing officer L. L. Hendrix said the next step in the process of bridge and thoroughfare planning and construction will be selection of one of the three alternative thoroughfare corridors, a review process expected to take between four and five months.

That accomplished, DOT will enter the final three stages of an eight-step locating process: Right-of-way will be determined and secured, final design plans will be prepared and construction will be completed.

The second bridge to Oak Island project has now progressed into a two-phased process which will end in completion of the structure and connecting thoroughfare.

Phase A of the process deals
See Bridge, page 6



The featured attraction in Southport for the next few weeks almost certainly will be the movie "I Know What You Did Last Summer" as it is being filmed. Here, workmen redefine the skyline at the Southport yacht basin, where shooting is set to begin Friday and continue into next week.

Photo by Jim Harper

Since last U.S. census

County growth ranks fourth fastest in state

By Holly Edwards
Feature Editor

A \$14.7-million local budget proposal for the 1997-98 fiscal year was unanimously approved Friday by the Brunswick County

Board of Education and will be forwarded to county commissioners for consideration.

The proposal reflects a \$1.1-million increase over last year's local budget. New items in this year's proposal include local salary

supplements totaling \$175,000 for directors and supervisors, principals, assistant principals and teachers.

"The bottom line is our teachers are very, very valuable," said school board chairman Glenda Browning. "We want to attract and keep the best teachers in our county."

A \$150,000 allocation for three new administrative supervisors also is included in the budget proposal. See Growth, page 6

SCHOOL REQUEST

South Brunswick, Bolivia needs addressed in budget

By Holly Edwards
Feature Editor

A \$14.7-million local budget proposal for the 1997-98 fiscal year was unanimously approved Friday by the Brunswick County Board of Education and will be forwarded to county commissioners for consideration.

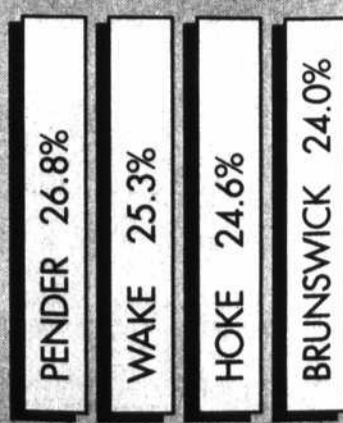
The proposal reflects a \$1.1-million increase over last year's local budget. New items in this year's proposal include local salary supplements totaling \$175,000 for directors and supervisors, principals, assistant principals and teachers.

"The bottom line is our teachers are very, very valuable," said school board chairman Glenda Browning. "We want to attract and keep the best teachers in our county."

A \$150,000 allocation for three new administrative supervisors also is included in the budget proposal. One supervisor would serve under each of two assistant superintendents and one would serve under the finance officer. The need for the new positions was identified in a state performance audit conducted three years ago, Browning said.

See Budget, page 9

RAPID GROWTH



NORTHERN SEWER

Plan could end towns' stalemate

By Terry Pope
County Editor

It is a battle that District 5 county commissioner Bill Sue has watched from his Leland area home for the past three and a half years.

Two adjacent towns remain at odds over sewer expansion while the entire northern Brunswick community bogs deeper into environmental danger, risking pollution to the Brunswick River and a stagnant economy that has no land on which to build.

And like rival siblings, Belville and Leland have failed to reach a plan to turn Belville's sewer treatment plant into a regional system to benefit the community -- for future residential, industrial and commercial growth. Officials are

See Stalemate, page 9

'We've looked at the worse-case scenario, of not being able to get any grant money, of having to pay seven percent on our money, and it still comes out feasible.'

Bill Sue
District 5 commissioner

SEVERAL OPTIONS

Sewer needs for long term are projected

By Terry Pope
County Editor

If the county buys Belville's treatment plant and enters the sewer business, it will be based on the recommendation of professional engineers who have studied the issue from a 20-year perspective.

Purchasing the Belville sewer treatment plant and operating it as part of a regional system is the first option McKim and Creed Engineers of Wilmington has recommended to Brunswick County commissioners as a way to end the sewer stalemate in the northern community.

According to Timothy Broome of McKim and Creed, the projected 20-year wastewater flow for the study area is approximately 1.5 million gallons per day, and he investigated four alternatives for sewer in the Leland, Belville and Navassa area:

- Abandon the existing Leland Industrial Park 250,000-gpd plant along with Belville's 400,000-gpd plant and build a new 1.5-million-gpd advanced sewer treatment facility with 1.2 million gallons discharged to the Cape Fear River and 300,000 gpd disposed by land application on a local golf course.

- Maintain Belville's plant and the industrial park plant and build another 850,000-gpd land application system to dispose of effluent on a dedicated site.

- Maintain the industrial park plant and expand Belville's plant to 1.25 million gpd with 950,000 gallons discharged to the Brunswick River and 300,000 gallons by land application on a local golf course.

See Sewer, page 9

Operation of the expanded plant could be by the county, the Leland Sanitary District or private contractor working under the auspices of either the county or sanitary district



Forecast

The extended forecast calls for mostly sunny skies Thursday through Saturday with highs in the 70's.

INSIDE

Police report	8
Business	12
District Court	14
Obituaries	15
Calendar	3B
Church	6B
Schools	7B
Plant Doctor	9D
TV schedule	10D