



Sports

South Brunswick looks for a new basketball coach after McKinnon resigns -- 1C

Neig

Ferry service the Southport vice on the C

Our

Long Beach its interest in Watch program -- page 2

Water plans

County won't sell N.C. 211 plant to town

By Richard Nubel
Municipal Editor

Long Beach will continue its effort to establish a municipal drinking water source and treatment facility, but it appears now the Brunswick County water treatment plant on N. C. 211 west of Southport won't figure into Long Beach plans.

Meeting Monday night, county commissioners voted 4-1 to decline a Long Beach offer to negotiate for purchase of the county's N. C. 211 water treatment plant. Only commissioner Leslie Collier of District 3, which includes Southport-Oak Island, voted against commissioner Bill Sue's motion.

In stating his motion to turn down the Long Beach offer to negotiate, Sue did, however, ask that Long Beach be notified of commissioners' desire to meet with Long Beach officials to discuss the town's and county's long-term drinking water goals.

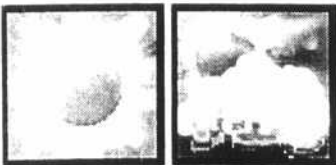
Long Beach has purchased drinking water from Brunswick County since the late 1970s. Alarmed by rapidly increasing water rates charged by the county in recent years -- a 36-percent rate increase was proposed last year and a 25-percent increase was eventually passed on to customers -- Long Beach Town Council made up to \$300,000 available this budget year to explore alternative drinking water sources. The town this year has spent over \$140,000 to explore development of a municipally owned groundwater source and treatment plant on the mainland side of the Intracoastal Waterway.

If that option appears feasible -- test well sites are now being explored and pilot treatment of groundwater has been authorized -- development of the mainland water source will be timed to coincide with the opening of the second, western bridge to Oak Island in 1999.

Consulting engineers have told the town it will likely be able to recover groundwater and treat it at the same price or cheaper than Brunswick County can furnish treated water by 2003.

The Long Beach offer to negotiate a purchase of the six-million-gallon-per-day (gpd) Brunswick County N. C. 211 water treatment plant was presented as part of the town's effort to secure a reliable, cost-effective water source.

See Water, page 13



Forecast

The extended forecast calls for mostly sunny skies Thursday through Saturday with highs in the 70's.

INSIDE

- Police report ... 10
- Business ... 14
- Obituaries ... 15
- Calendar ... 3B
- Church ... 7B
- Schools ... 7B
- Plant Doctor ... 8B
- District Court ... 7C
- Classifieds ... 1D



For riders on the ferry Southport it is a cruise on the sea of dreams -- of daring voyages, brave adventures, mighty deeds; or perhaps peace and quiet, tranquility and relaxation. The gulls just dream about Ritz crackers. (More photos in the "Neighbors" section.)

Photo by Jim Harper

COUNTY ZONING

Beach, rural areas require different rules

By Terry Pope
County Editor

When it comes to rural subdivisions, Brunswick County's may resemble the developments found in urban Florida.

That's the model used to draft the county's subdivision ordinance nearly ten years ago. Now Brunswick County planners want to scrap it and start anew, with one that allows developers to keep the county's rural setting as rural, and one not so strict with its urban standards.

"I for one want to completely rehash it, tear it from limb to limb, and come up with a new document," said Brunswick County Planning Board chairman John Thompson.

Rewriting the subdivision ordinance is one of many topics the planning board discussed last week in a

See Rules, page 6

'Part of the problem is that we're such a diverse county. We've got to have one set of rules for our beach communities and another set of rules for our rural communities.'

Becky King
County planner

LONG-RANGE GOALS

Planners want 'clear signal' on key issues

By Terry Pope
County Editor

County planners want a joint meeting with the board of commissioners to get "clear signals" on long-range planning issues now facing the county.

Armed with citizen comments gathered from a series of land use hearings last month, the Brunswick County Planning Board began organizing its approach to long-range issues last week with consultant Glenn Harbeck.

It is a new role the planning board will assume following disbandment of a long-range citizens' committee last month. Planners will meet twice a month and want to stay in close touch with commissioners.

"We want to hold a workshop with commissioners on the major issues to

See Issues, page 6

'I've always had a problem with tourism and recreation being the main backbone of industry in a county, because there are a lot of people who don't benefit from this.'

John Thompson
Planning chairman

Fourth of July around corner

Fourth of July festivities will begin a little earlier than usual this year in Southport.

Filming of an Independence Day parade, complete with marching bands, floats and beauty queens, will take place at the old yacht basin on Monday and Tuesday, April 14-15. Filming will continue throughout the day and evening.

Hundreds of residents have been cast as extras, and marching bands from the three county high schools will participate in the parade.

Filming of the feature film "I Know What You Did Last Summer" began in the city on March 31 and is scheduled to continue at various locations through early May.

Booze & lose

By Terry Pope
County Editor

State funds are no longer available for an anti-drunk driving program sheriff Ronald Hewett says has been highly successful in Brunswick County.

See Booze, page 13

School project moves quickly

By Holly Edwards
Feature Editor

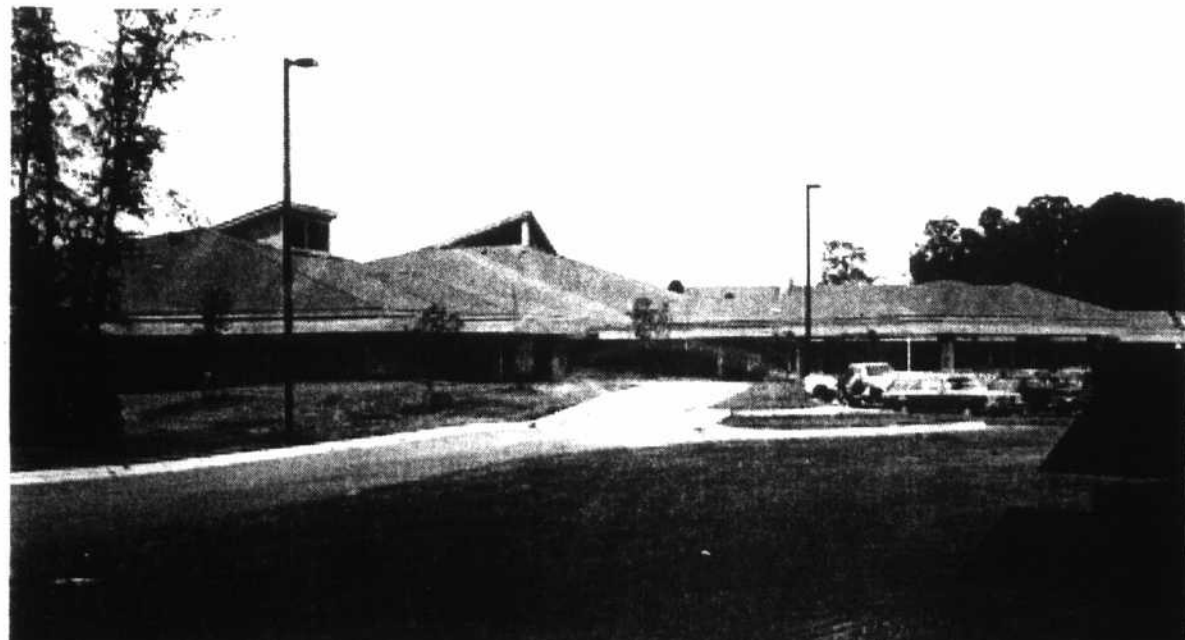
Brunswick County school officials are moving quickly to finalize plans for construction of a new elementary school.

If the school is to be ready for the 1998-99 school year, construction must begin in June, said superintendent of schools Marion Wise.

Vance Elementary School in Raleigh will serve as prototype for the new school. Wise said the school system reduced architectural design costs by using an existing school plan.

Brunswick County schools will pay Smart and Gruel Architects Inc. of Raleigh \$313,340 for the basic design of the school, and up to \$91,000 to cover costs of revising the design. The Brunswick County school will be

See Project, page 6



Vance Elementary in Raleigh will be the prototype of Brunswick County's newest school facility.