

The Area's Premier Waterfront
& Golf Community

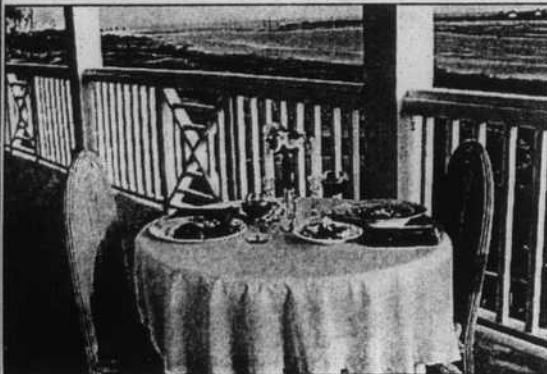
Brick Landing

PLANTATION

Located on Hwy. 179, Ocean Isle Beach, NC, 29469



Call us: (910) 754-4373 or
Toll Free 1-(800)-438-3006
http://www.weblinc.com/brick_landing
E-mail: bricklanding@infoave.net



**OFFERING NOT
ONLY A PLACE
TO CALL HOME
BUT A
LIFESTYLE...FOR
YOU TO ENJOY
EVERYDAY!**

- 18 Hole Championship Golf
- Swimming Complex
- Lighted Tennis Courts
- 24-Hour Security
- Fishing Pier
- Waterway Lots w/Boat Slips
- Model Home
- Condos/Villas
- Homesites From \$29,000
- Waterway Clubhouse
Featuring the Island Wacche Grille

Clubhouse and Pier



INLET WACCHE CONDO
One of a kind!! Custom features throughout, double unit, approx. 2300 sq. ft., comes w/2-car carports. \$335,000.



Swimming Pool and Tennis Courts
Southern Oaks Condos
(Located in background)



1632
CARRIAGE PLACE
Priced at \$289,900
OWNER
RELOCATED

Approx. 3700 sq. ft., 2-story home, on a lovely wooded lot. Great rm and wet bar, formal DR, large kitchen, lots of decking, this house is terrific for entertaining. Circular drive makes this a unique setting.

County provides many recreation opportunities

Brunswick County's system of parks provides an area for outdoor recreation in all districts of the county.

George Page, county parks and recreation director, believes the county's six well-designed township parks offer an outdoor break in a county which has 35 miles of shoreline and is widely attractive to both tourists and retirees. After spending a day at the beach, county parks offer a place to play tennis, basketball, softball, baseball and soccer, and playgrounds for children.

Smithville Township District Park, north of Southport, will be host to two 1998 state Dixie Boys baseball championships the week of July 17-23. One event is for 13-year-olds and the other for all-stars ages 13 and 14.

It is the first time a county has hosted two championship events the same year, much less the same week. Page said the quality of county park facilities and the area itself persuaded the Dixie Boys program to hold the championships in Brunswick County.

Parks are open from 8 a.m. to 10 p.m. daily at the following locations:

■ **Smithville Township District Park:** A 40-acre park north of Southport on N. C. 133; it has two baseball/softball fields with 300-foot fence distance, two lighted tennis courts, lighted basketball court, beach volleyball court, lighted football and soccer field, mini-soccer field for youngsters, concession stand with restrooms, playground area with two covered picnic shelters.

■ **Town Creek Township District Park:** A 35-acre park on U. S. 17 at Winnabow; it has two baseball/soft-

ball fields of 200-foot and 300-foot distances, two tennis courts, basketball court, two picnic shelters, concession with restrooms, playground, community building with 2,000 square feet of meeting space, shuffleboard and horseshoes.

■ **Northwest Township District Park:** A 35-acre park near Leland on U. S. 74-76; it has two baseball/softball fields, concession with restrooms, four picnic shelters, four lighted tennis courts, two lighted basketball courts, eight acres of practice fields, playgrounds and soccer field.

■ **Lockwood Folly Township District Park:** A 20-acre park just west of Supply; it has two baseball/softball fields with 300-foot fence distance, two tennis courts, basketball court, beach volleyball court, football and soccer field, a mini-soccer field, concession and restrooms, playground and two picnic shelters; located west of Supply on N. C. 211.

■ **Shalotte Township District Park:** A 64-acre park on old U. S. 17 south of Shallotte; it has two softball and baseball fields with 300-foot and 250-foot fence distances, two tennis courts, basketball court, two playgrounds for children, three picnic shelters, concession with restrooms.

■ **Waccamaw Township District Park:** A 15-acre park in the Ash community; it has two baseball/softball fields of 200-foot and 300-foot distances, two tennis courts, two picnic shelters, concession with restrooms, basketball court, playground, beach volleyball court, football or soccer field, community building with 7,500 square feet of meeting space.

REALTORS

4 Hour Continuing Education Credit
Seminar on Tax-Free Exchanges

April 16 - Oak Island Country Club, 9 a.m.
Caswell Beach, NC

April 20 - Battleship North Carolina, 9 am
Wilmington, NC

April 23 - Ocean Isle Inn, 9 a.m.
Ocean Isle Beach, NC

Ron Tousignant

Tousignant Real Estate Advisory Services

Limited Capacity • Tuition: \$55

Call for Reservation (910) 201-4466