

Golf

Continued from page 41

910-278-5275 or 1-800-278-5275.

Fox Squirrel Country Club

The Boiling Spring Lakes course is among the oldest in the county, plays to a par-72 and offers four tee choices: blue -- 6,762 yards; white -- 6,208 yards; gold -- 5,485 yards; red -- 5,349 yards.

Golfers will find a bargain on this course, which has a slope of 125 and rating of 72.5. The greens fee is \$21, cart included, at all times from Monday to Friday, and \$25 per person on Saturday and Sunday.

The clubhouse is located on South Shore Drive. Take N. C. 87 north from Southport-Oak Island, turn right just before crossing Boiling Spring Lake (Big Lake) and continue about a mile.

For information or tee times, call 910-845-2625.

Olde Fort Golf Club

This course, located on N. C. 133 about 15 miles north of Southport, offers three tee choices: blue -- 6,311 yards; white -- 5,773 yards; red -- 4,580 yards. All three lengths play to par 72.

The basic fee is \$15 including cart. Senior citizens age 60 and over can play this course for \$13. Summer rates may apply after April. Olde Fort has a slope of 108 and a rating of 68.4.

Persons may call the clubhouse, 910-371-9940, for information. Tee times are not accepted at Olde Fort.

The Gauntlet at St. James

The Gauntlet was the first course open for play at St. James Plantation west of Southport, and it offers an array of scenic and treacherous holes. The P. B. Dye layout measures 7,052 yards from the championship tees, 6,428 yards from the back tees, 5,845 yards from the middle tees and 5,048 yards from the forward tees.

The ninth hole is rated the most difficult on the par-72 course. The Gauntlet has a slope of 142 and rating of 75.

The basic rate, including cart, until May 5 is \$65 in the mornings and \$55 in the afternoons. From May 6-19, fees are \$55 in the mornings and \$45 in the afternoons. From May 20 to August 29 the rate is \$45 in the mornings and \$35 in the afternoons.

For information or tee times, call 910-253-3008 or 1-800-247-4806. Tee times must be made 48 hours in advance. The Gauntlet is located in St. James Plantation, about five miles west of Southport on N. C. 211. A gatekeeper will allow entrance and give directions to the clubhouse.

Members Club at St. James

The Members Club at St. James Plantation near Southport measures 6,887 yards from its championship tees and 5,206 yards from its for-

See Tee time, next page

CASWELL DUNES & COMPANY Real Estate

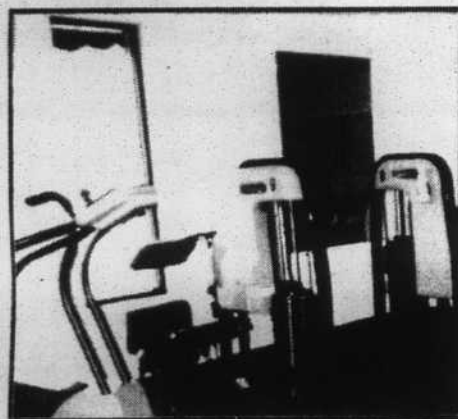


121 Country Club Drive, Yaupon Beach, NC 28465

910-278-3303 • 910-278-5262 • 800-222-8212

We take time to listen and work with you to find the property that best meets your lifestyle and budget. We're here to help you!

Jackie Milling, Owner/Broker, NC State Licensed Real Estate Appraiser



J. BANKS GUYTON
PGA Golf Professional

Available for: Golf Lessons, Clinics,
Corporate Group Lessons, Club Repair,
Custom Club Fitting, Shafts, Single
Frequency Matched



Enhance your performance and
your attitude with a
PROFESSIONAL MASSAGE

Massage improves your health and
performance. Visit our newly
equipped massage room.
Massage is good for your health
and sports performance.

OAK ISLAND SPORTS CENTER
DRIVING RANGE • MINIATURE GOLF • NAUTILUS

4874 LONG BEACH RD.
SOUTHPORT
457-5105