

MARGARET RUDD & ASSOCIATES, INC., REALTORS

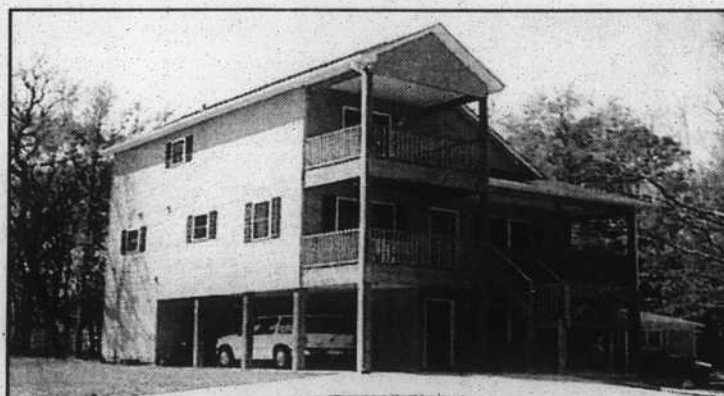
NEW LISTINGS



197 SOUTH SHORE DRIVE, BSL
Wonderful lot on the Big Lake. Great retirement home with hardwood floors and screened porch. Water softener in storage room. Paved drive. \$130,000.



118 SE 14th STREET
Majestic oaks frame this Davis Canal home with floating boat dock, hot tub, outside shower and lots of decking. \$178,700.



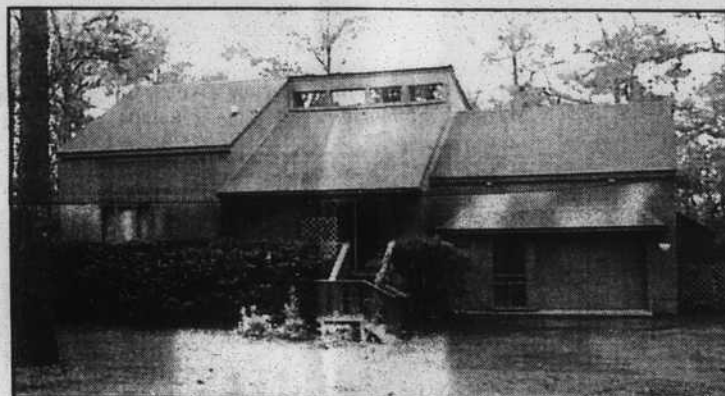
707 E. YACHT DRIVE
Corner location with excellent waterway view. 4-bedroom, 3 1/2-bath home, master suite offers garden tub and shower, large covered front porch, rear deck, sprinkler system and more. A must see! \$218,900.



214 NE 40th STREET
Cozy brick ranch on two wooded lots in quiet neighborhood. Short walk to the beach and Intracoastal Waterway. \$91,500.



212 NE 35th STREET
NEW CONSTRUCTION! Popular floor plan maximizes space in this 3-bedroom, 2-bath home with fireplace. Sunny kitchen adjoining deck. Large storage area and parking underneath. \$97,500.



306 PARK AVENUE EXTENSION
Meticulously maintained home in one of Southport's most desirable locations! Beautiful yard with sprinkler system and gazebo with jacuzzi. Gourmet kitchen, Corian counters, solid wood cabinets. Numerous other features. \$159,900.



133 NW 8th STREET
Unique new construction! Bright and open, 3 bedrooms, 2 baths, 1,352 sq. ft. with vinyl siding, covered porch, tile floors and skylight in bath, storage under. \$108,900.



6707 KING'S LYNN DRIVE
Beautifully decorated, new hardwood floors in kitchen and dining areas. Roof new in fall of 1996. Exterior painted summer of 1997. \$204,900.

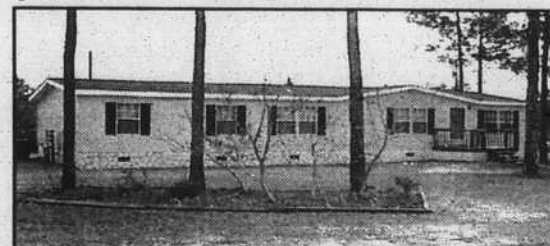
REDUCED!



2522 MARSH HEN DRIVE. Contemporary 3-bedroom, 2-bath new construction with vaulted ceilings, large master suite and wonderful marsh views. \$143,500.



3726 E. BEACH DRIVE. New construction, second row. Unique 3-bedroom, 2-bath plan with marshside dining and spacious master suite. \$172,000.



4492 FLAGSHIP BLVD. Spacious doublewide mobile home on two lots in nice neighborhood in like new condition. Includes a 10x16' storage building. \$75,000.

SOUTHPORT

1023 N. Howe Street, Southport
910-457-5258 • 800-733-5258

SALLIE GILBERT, GRI, 457-0200
PETER WYCKOFF, ABR, CRS, GRI, 457-5599
DAVID THORP, 457-7105
LAVERNE PAGE, 278-3007
SUE TYLER, 201-4464
VERILYN McKEE, GRI, 457-6505
MARGARET RUDD, CRB, CRS, GRI
SISSY RHYNE, CRB, GRI, Manager

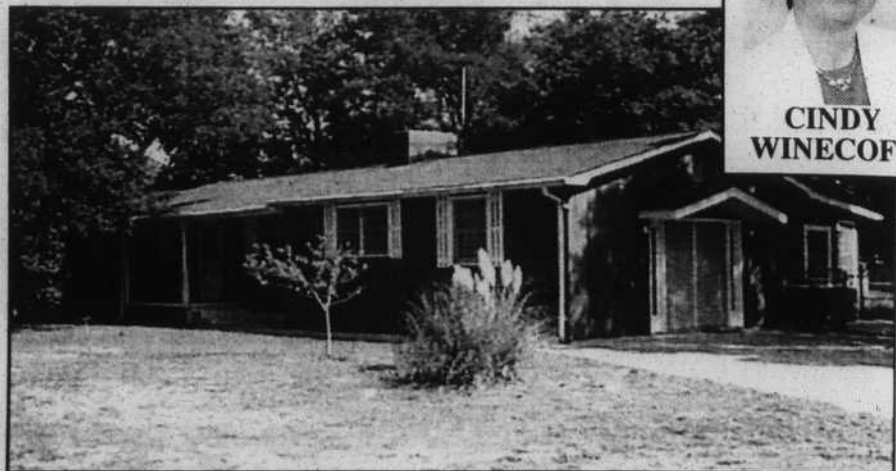
OAK ISLAND BEACHES

210 Country Club Drive, Yaupon Beach
910-278-5213 • 800-733-5213

SUE FRANKS, CRS, GRI, 278-9642
ANNE WHITT, GRI, 278-9369
BILLY BARNES, 278-4133
MADELINE GORDON, CRS, GRI, 278-3737
WYATT GORDON, ABR, CRS, GRI, 278-3737
LEE SMYRE, GRI, 278-4946
LEAH MOYER, GRI, 278-4019
CINDY WINECOFF, GRI, 278-7294
BRIAN BELL, 278-9980
KIM WHITEHEART, GRI, Manager
BUDDY RUDD, GRI, Property Manager



Market Spotlight



3301 E. YACHT DRIVE. Intracoastal Waterway view, corner location on two lots! 3 bedrooms, 2 baths, updated kitchen, new roof and heat pump, fenced yard, paved drive. \$109,500. Adjoining lot also available.



CINDY
WINECOFF

SurftheNet!

To see color photos and descriptions of all our homes for sale, vacation beach rentals, commercial properties & land for sale, visit our site on the Internet World Wide Web:
<http://www.rudd.com/>

To send E-mail address it to:
staff@rudd.com

