

THE STATE PORT PILOT



Scholar
North Brun
a good mix
athletics and

Clean
Keeping bir
clean impo

roves
emics,

eas
- 1B

Phone 910-457-4568/Fax 910-457-9427/e-mail pilot@southport.net

Volume 68, Number 13

Publish

esday in Southport, NC

Long Beach Services question at hand

By Richard Nubel
Municipal Editor

Recycling, banking and billing procedures are all likely to be impacted by the planned consolidation of the towns of Long Beach and Yaupon Beach as the Town of Oak Island on July 1, 1999.

Long Beach Town council appeared keenly aware of that fact Tuesday night as it postponed action on a recommendation of the town's recycling committee and moved slowly and carefully to embrace a new utilities billing procedure which must be coordinated with the banking services of an institution still not chosen.

Recycling committee chairman Bob Boyd brought a proposal before council to begin once-weekly recycling from curbside. The committee recommended recycling be done on the same day that refuse is collected. The additional service would cost an additional 40 cents per household per month.

When added to the \$1.96 monthly recycling cost Long Beach customers now pay, the cost of recycling becomes \$2.36 per month or \$7.08 each quarterly billing cycle.

Town manager Jerry Walters said the proposal would add about \$20,000 to the town's annual contract cost for services provided by Waste Industries Inc.

Boyd said the recommendation came in response to the three most frequent complaints the recycling committee had received: Every other week collection is too infrequent; bins are too small to handle recyclables; collection dates are too confusing.

"To solve what seems to be the most urgent problems, the recycling committee recommends once-weekly recycling on trash day," Boyd said.

Mayor Joan Altman noted the recycling committee had not yet met with representatives appointed to that body from Yaupon Beach in anticipation of Consolidation. She also contended the recycling program, begun in August, had not been on-going long enough to develop baseline data on participation. She recommended that data be compiled first so the town could gauge increases in participation.

Council declined to take action on the recycling committee's request until the Yaupon Beach representatives are consulted.

Mayor Altman said recycling problems could be combated and participation could be increased through a consumer education program.
See Long Beach, page 6

Early edition

Next week's edition of *The State Port Pilot* will be published a day early, on Tuesday. The early printing will facilitate delivery to local subscribers and many out-of-county subscribers before the holiday.

Deadline for real estate advertising remains Friday at noon and classified advertising Monday at noon. Display advertising also must be in the newspaper office by noon Monday this week.

Deadline for news material is noon Monday, but earlier submission is suggested to ensure publication in the Thanksgiving edition.

FALL HARVEST



Photo by Jim Harper

Last week's freezes in the Southport-Oak Island area did not discourage lantana blooms, nor the last of the butterfly migrants passing through the community. Seasonable weather is expected through the balance of this week.

State DOT session

New documents may pave way to progress

By Richard Nubel
Municipal Editor

Representatives of 17 state and federal agencies charged with environmental review of N. C. Department of Transportation projects are now mulling over new information relative to the siting of a road corridor to a proposed second bridge to Oak Island. That information is said to be supportive of placing the bridge roadway corridor between Middleton Street and N. C. 211 at Midway Road.

The information about development trends between

the area opposite Oak Island's Yellow Banks and N. C. 211 was provided by DOT engineers and their consultants Thursday in Raleigh. While there is no hard and fast time-frame by which their reaction to new facts at hand must be made, the agency reps will submit their written comments on corridor siting to the U. S. Army Corps of Engineers, under terms of an agreement which consolidates federal and state review efforts.

"The corps will then decide if we can proceed with a corridor selection from the alternatives we have, or if we have to develop other corridor alternatives," said

See State DOT, page 6

Waterfront storage

City to weigh options for more water access

By Richard Nubel
Municipal Editor

Under terms of a motion aldermen may or may not have meant to adopt, Southport Maritime Museum may for 365 days store equipment in the old Caroon Crab Co. building on Bay Street at the foot of Kingsley Street.

Aldermen, however, said they would schedule a workshop to discuss permanent plans for the old crab factory building and the land it occupies.

Maritime museum director Mary Strickland Thursday appeared before aldermen seeking use of the Caroon building as a temporary storage facility for equipment the

Brunswick Town State Historic Site will otherwise discard as part of its renovation, now underway. She said if the museum were given use of the Caroon building on Bay Street for a long period of time, it would be converted into a preservation laboratory, in addition to a storage facility. In a letter to aldermen last week she
See Storage, page 10

Unified front

County urges Midway route for new bridge

By Terry Pope
County Editor

County officials have taken a stand on a preferred second bridge route to Oak Island and will invite Department of Transportation officials to see first-hand some problems with county roadways.

Last week's proposal to delay construction of the second bridge along with Brunswick County's portion of the Wilmington bypass to Interstate 40 for five years angered the Brunswick County Board of Commissioners. They now want DOT secretary Norris Tolson to see for himself traffic conditions in the county.

Commissioners say they are left without a local voice on the DOT board following the resignations of Ocean Isle Beach developer Odell Williamson and Wilmington attorney Michael Mills. Williamson's family owns acreage in the vicinity of the proposed bridge corridor and offered to donate the right-of-way for its construction.

"He told me that he (Tolson) and Doug Bowers (DOT district engineer) would represent us," said District 5 commissioner Bill Sue of Leland. "So we're calling him down here as our representative."

Commissioners did not like what they heard at a meeting last week with DOT representatives. District 3 commissioner Leslie Collier of Long Beach suggested to her board that it is time for the county to take an official stand on the preferred bridge corridor route and to contin-

"We're as entitled to bridges to the island as they are all up and down the coast. Somebody needs to start making a decision about where it needs to be."

JoAnn Bellamy Simmons
Commission chairman

ue fighting for construction of the Outer Loop in northern Brunswick County.

The loop would be a four-lane bypass of Wilmington and would route traffic north of Leland and Navassa, sending it on an expressway to I-40 near Pender County. It would connect to U. S. 17 near Town Creek.

The board officially endorsed alternatives A, B or C for the second bridge corridor with a desired route of B, rather than a route of D or E that would take traffic through Sunset Harbor. A, B or C would exit Middleton Street on the island and
See Midway, page 10

County adopts bridge corridor plan

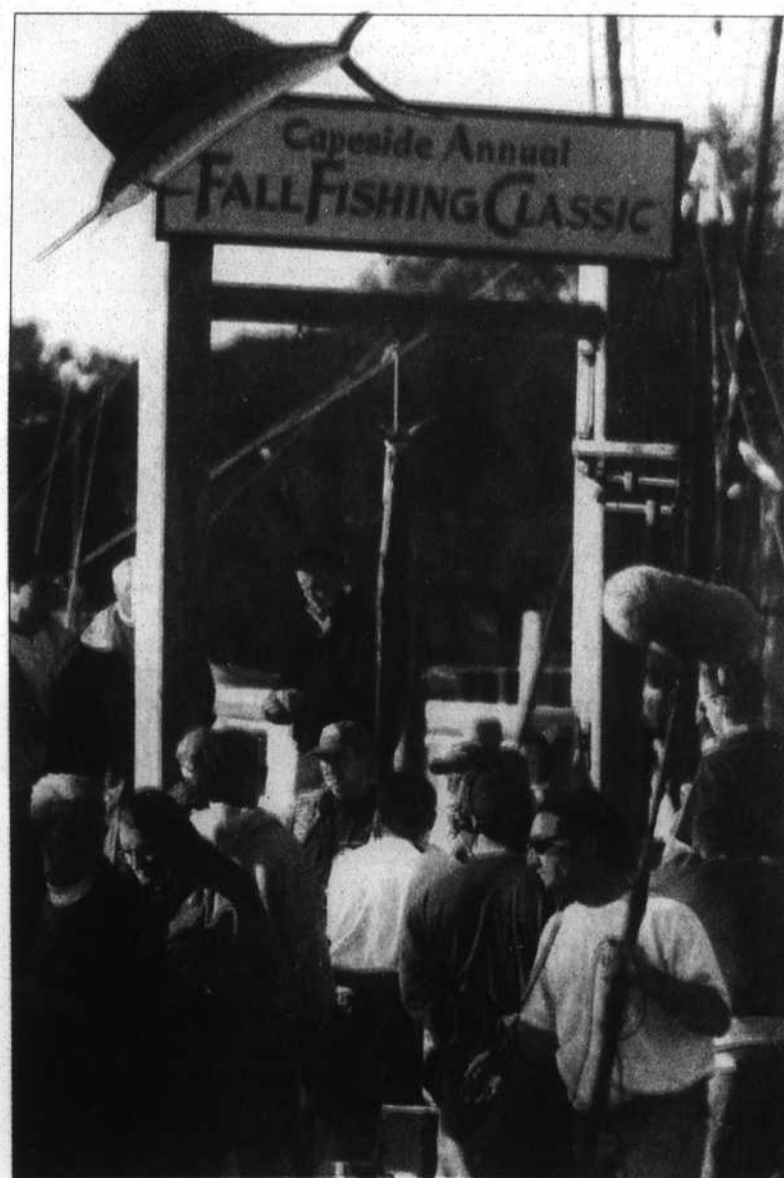


Photo by Jim Harper

'Dawson's Creek'

No, it wasn't the U. S. Open Sailfish Tournament at the yacht basin last week, but the filming of a "Dawson's Creek" episode for television in a setting that residents and frequent visitors were sure to recognize.