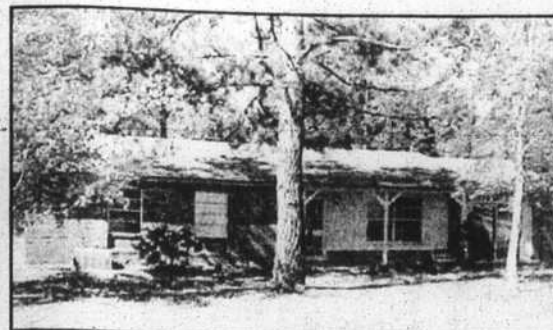




311 RIVER DRIVE
RARE FIND IN SOUTHPORT! 3-bedroom, 2-bath ranch on large lot with an abundance of majestic oaks. Large family room with fireplace. \$268,000.



6729 W. BEACH DRIVE
OCEANFRONT DUPLEX with 6 bedrooms, 4 baths. 2,880 sq. ft. Wonderful rental history and great views of ocean and inlet. \$369,000.



114 OAK VIEW DRIVE
Great starter home! 3-bedroom, 1 1/2-bath, new carpet. Close to Southport-Oak Island. \$64,500.



1116 BELHAVEN DRIVE SW
Perfect beach retreat. Only five minutes to Holden Beach. \$92,000.



714 ALYSSUM AVENUE
Great view, dock, boat lift and deep water access to Intracoastal Waterway. \$499,000.



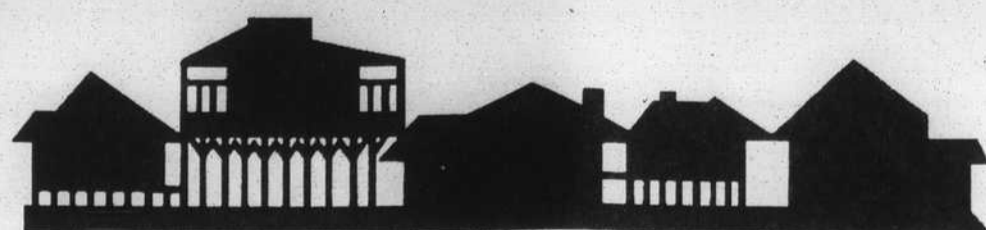
5416 W. BEACH DRIVE
House has three separate entrances and can be rented as a penthouse, upstairs, downstairs. Wonderful views of ocean and sound. Great rental history. \$245,000.



321 NE 41st STREET
Unique, low maintenance home on wooded lot with good beach access. 3 bedrooms, 1 1/2 baths. \$74,990.



704 ALYSSUM AVENUE
Beautiful two-story home in The Arboretum. 3 bedrooms, 2 1/2 baths, formal dining room, screened porch, all situated on a beautifully landscaped lot. Owner will consider rent back offer. \$219,500.



MARGARET RUDD & ASSOCIATES, INC., REALTORS

<http://www.rudd.com>
E-mail: staff@rudd.com

- Market Leaders Since 1981
- Offering an Unequaled Depth of Real Estate Experience
- Award Winning Relocation Department

SOUTHPORT

1023 N. Howe Street
Southport, NC 28461
910-457-5258
800-733-5258

SALLIE GILBERT, GRI, 457-0200
PETER WYCKOFF, ABR, CRS, GRI, 457-5599
DAVID THORP, 457-7105
LAVERNE PAGE, 278-3007
VERILYN McKEE, GRI, 457-6505
ASHLEY HUGHES, 278-6595
MARGARET RUDD, CRB, CRS, GRI
SISSY RHYNE, CRB, GRI, Manager

OAK ISLAND BEACHES

210 Country Club Drive
Yaupon Beach, NC 28465
910-278-5213
800-733-5213

SUE FRANKS, CRS, GRI, 278-9642
ANNE WHITT, GRI, 278-9369
BILLY BARNES, 278-4133
MADELEINE GORDON, ABR, CRS, GRI, 278-3737
WYATT GORDON, ABR, CRS, GRI, 278-3737
LEE SMYRE, GRI, 278-4946
LEAH MOYER, GRI, 278-4019
CINDY WINECOFF, ABR, GRI, 278-7294
BRIAN BELL, 278-9980
KIM WHITEHEART, CRB, GRI, Manager
BUDDY RUDD, GRI, Property Manager



6501 WALDEN POND LANE

Beautiful deep lot in Winding Creek. Approx. 100x352' on Walden Pond. A must see to appreciate. \$57,500.



120 SW YACHT DRIVE
PANORAMIC VIEW OF DAVIS CREEK MEETING INTRACOASTAL WATERWAY. Floating boat dock, boat lift, and bulkheaded lot. \$397,000.



104 SW 2nd STREET
Great location two blocks to beach crossover. Quiet street ending on Davis Canal. 3-bedroom, 1-bath. \$74,900.



110 SE 33rd STREET
Unique canal front, has pool, garage, pier/dock, irrigation, vinyl fencing, Jacuzzi, Jenn-Air, Pergo floors, fireplace, updated kitchen and baths. Many custom features. \$270,000.



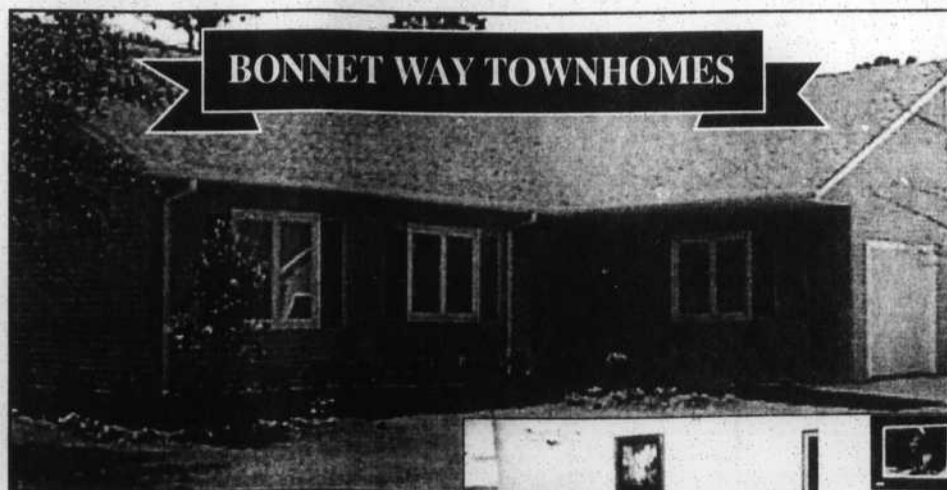
1230 SOUTHPORT-SUPPLY ROAD
Beautiful home on 2.365 acres. A unique opportunity for country living. Convenient to Hwy. 17 and area beaches. \$180,000.

Market Spotlight by Madeleine Gordon



702 W. YACHT DRIVE
BEAUTIFUL WATERWAY VIEW from this 4- or 5-bedroom home. Fully equipped kitchen with custom cabinets, fireplace in den. Climb stairway to library landing. \$419,500.

Southport's Affordable Alternative in New Home Construction!



BONNET WAY TOWNHOMES

Model Open Daily
1 p.m. to 3 p.m.
Saturday
11 a.m. to 3 p.m.



- A FREE...
- Refrigerator
 - Washer & Dryer
 - Microwave
 - Range
 - Dishwasher
 - Disposal

will be included in each townhome that goes under contract during the month of October, and then subsequently closes.

So, if you have been thinking about investing in a Bonnet Way TownHome, NOW IS THE TIME! This offer is good through the month of October only!

1,437 sq. ft. in these beautiful new 3-bedroom, 2-bath townhomes just outside the Southport city limits with garage, screened porch, covered private entryway and more! These homes are conveniently located near restaurants, golf courses, the Historic Southport Riverfront, and Oak Island beaches.

Starting at \$115,625!
Stop by and let Janet Weikle or David Thorp show you the model today!



RELO Represents:
• 1,100 Leading Real Estate Companies
• 4,000 Offices
• 90,000+ Sales Professionals
• Annual Sales Volume of 170 Billion -- more than any other national real estate organization

NATIONAL COVERAGE YOU CAN COUNT ON! • www.relo.com

- Nearly one-half of the country's Top 100 Brokers - three times that of any national group
- Almost half of the Relocation Directors Council, the nation's leading organization of Relocation Directors
- Dominant coverage in the luxury real estate market
- RELO/The Premiere Real Estate Network