

A MAUSOLEUM TO M'KINLEY

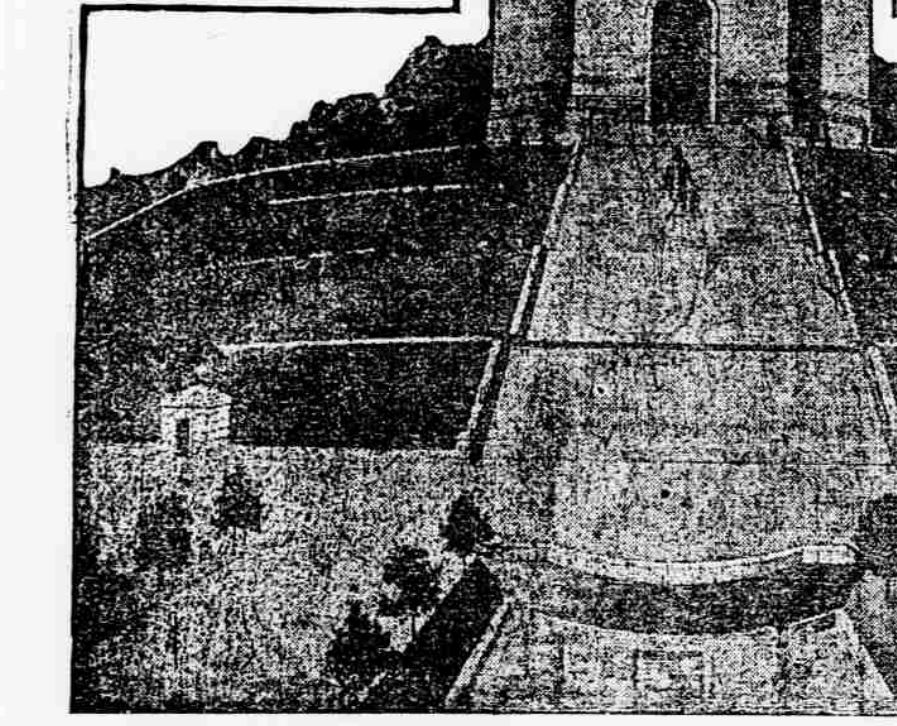
Splendid Memorial Unveiled At Home of Martyr President

GREAT THROGS PRESENT

With imposing ceremonies the magnificent monument to the late President McKinley was dedicated Monday...

Canton, O., Special.—With an address by President Roosevelt in which he paid a glowing and tender tribute to the martyr President...

The parade was the most imposing ever seen on the streets of Canton...



McKINLEY MAUSOLEUM.

fraternal bodies and several bands both union and non-union bands marched in the parade...

After reviewing the parade, the President and other distinguished guests of the city were tendered a luncheon at the auditorium...

An invocation by the Rev. F. M. Bristol of Washington opened the exercises...

Four States have contributed a share of the material which has been used in the building of the monument...

Completion of the dedicatory program the President left for Keokuk, Ia., where he will begin his trip down the Mississippi.

Description of Mausoleum.

The mausoleum stands on an eminence to which has been given the name of Monument Hill...

Floods in France Worse.

Montpellier, France, By Cable.—The heavy rains recommenced and the flood situation is becoming worse...

Rock Hill Negro Shot.

Rock Hill, Special.—Police Officer Miller of this city shot and killed Elliott Jackson a negro 24 years of age...

PRESIDENT'S ADDRESS

Chief Executive Delivers a Touching Oration at Unveiling of McKinley Mausoleum.

We have gathered together today to pay our meed of respect and affection to the memory of William McKinley...

High Doric columns are placed around the interior in such a manner as to appear half buried in the sides of the building...

Half way down from the top of the 125 granite steps that lead up to the main entrance on the south side...

Twenty-six acres of ground were purchased by the monument commission and the utmost art of the landscape gardener has been lavished upon it...

There is a singular appropriateness in the inscription on the monument. Mr. Cortelyou's words...

There is a singular appropriateness in the inscription on the monument. Mr. Cortelyou's words...

There is a singular appropriateness in the inscription on the monument. Mr. Cortelyou's words...

There is a singular appropriateness in the inscription on the monument. Mr. Cortelyou's words...

There is a singular appropriateness in the inscription on the monument. Mr. Cortelyou's words...

There is a singular appropriateness in the inscription on the monument. Mr. Cortelyou's words...

There is a singular appropriateness in the inscription on the monument. Mr. Cortelyou's words...

There is a singular appropriateness in the inscription on the monument. Mr. Cortelyou's words...

There is a singular appropriateness in the inscription on the monument. Mr. Cortelyou's words...

There is a singular appropriateness in the inscription on the monument. Mr. Cortelyou's words...

There is a singular appropriateness in the inscription on the monument. Mr. Cortelyou's words...

There is a singular appropriateness in the inscription on the monument. Mr. Cortelyou's words...

There is a singular appropriateness in the inscription on the monument. Mr. Cortelyou's words...

There is a singular appropriateness in the inscription on the monument. Mr. Cortelyou's words...

INTEREST IN FINAL OUTCOME

Mr. E. D. Smith, President of South Carolina Cotton Association Says There is Now Being Waged the Most Interesting Contest in the History of Cotton, Between Farmers and Speculators.

Columbia, S. C., Special.—Mr. E. D. Smith president of the South Carolina Cotton Association...

The most interesting contest in the history of cotton is now being waged between the farmers and the New York speculators...

From the standpoint of our material prosperity there is only one encouragement of a spirit of envy and hostility toward honest business men...

There is a singular appropriateness in the inscription on the monument. Mr. Cortelyou's words...

There is a singular appropriateness in the inscription on the monument. Mr. Cortelyou's words...

There is a singular appropriateness in the inscription on the monument. Mr. Cortelyou's words...

There is a singular appropriateness in the inscription on the monument. Mr. Cortelyou's words...

There is a singular appropriateness in the inscription on the monument. Mr. Cortelyou's words...

There is a singular appropriateness in the inscription on the monument. Mr. Cortelyou's words...

There is a singular appropriateness in the inscription on the monument. Mr. Cortelyou's words...

There is a singular appropriateness in the inscription on the monument. Mr. Cortelyou's words...

There is a singular appropriateness in the inscription on the monument. Mr. Cortelyou's words...

There is a singular appropriateness in the inscription on the monument. Mr. Cortelyou's words...

There is a singular appropriateness in the inscription on the monument. Mr. Cortelyou's words...

There is a singular appropriateness in the inscription on the monument. Mr. Cortelyou's words...

There is a singular appropriateness in the inscription on the monument. Mr. Cortelyou's words...

There is a singular appropriateness in the inscription on the monument. Mr. Cortelyou's words...

There is a singular appropriateness in the inscription on the monument. Mr. Cortelyou's words...

A PRETTY CONTEST

Being Waged Between Cotton Growers and Speculators

Columbia, S. C., Special.—Mr. E. D. Smith president of the South Carolina Cotton Association...

The most interesting contest in the history of cotton is now being waged between the farmers and the New York speculators...

From the standpoint of our material prosperity there is only one encouragement of a spirit of envy and hostility toward honest business men...

There is a singular appropriateness in the inscription on the monument. Mr. Cortelyou's words...

There is a singular appropriateness in the inscription on the monument. Mr. Cortelyou's words...

There is a singular appropriateness in the inscription on the monument. Mr. Cortelyou's words...

There is a singular appropriateness in the inscription on the monument. Mr. Cortelyou's words...

There is a singular appropriateness in the inscription on the monument. Mr. Cortelyou's words...

There is a singular appropriateness in the inscription on the monument. Mr. Cortelyou's words...

There is a singular appropriateness in the inscription on the monument. Mr. Cortelyou's words...

There is a singular appropriateness in the inscription on the monument. Mr. Cortelyou's words...

There is a singular appropriateness in the inscription on the monument. Mr. Cortelyou's words...

There is a singular appropriateness in the inscription on the monument. Mr. Cortelyou's words...

There is a singular appropriateness in the inscription on the monument. Mr. Cortelyou's words...

There is a singular appropriateness in the inscription on the monument. Mr. Cortelyou's words...

There is a singular appropriateness in the inscription on the monument. Mr. Cortelyou's words...

There is a singular appropriateness in the inscription on the monument. Mr. Cortelyou's words...

There is a singular appropriateness in the inscription on the monument. Mr. Cortelyou's words...

ROOT VISITS TEXAS

The Secretary of State Spent a Strenuous Fifteen Hours Period in San Antonio and is Entertained in a Befitting Manner by the People—Representatives of the Mexican Republic Meet Him in the Texas City to Escort Him Over the Frontier.

San Antonio, Tex., Special.—Elihu Root, Secretary of State was Saturday the guest of San Antonio. He was entertained in a befitting manner...

The Secretary was met here by the Mexican welcoming committee, which consisted of General Pedro Rincon Gallardo, Chairman Major Porfirio Diaz, Jr., son of the President, Julio Limatore a brother of the secretary of finance for the Mexican republic...

Met By Committee. Secretary Root reached the city shortly after 7 o'clock Saturday morning and two hours later was met by the local reception committee.

At 11:30 o'clock Secretary Root and party went to the city hall where the public reception was held.

At 11:30 o'clock Secretary Root and party went to the city hall where the public reception was held.

At 11:30 o'clock Secretary Root and party went to the city hall where the public reception was held.

At 11:30 o'clock Secretary Root and party went to the city hall where the public reception was held.

At 11:30 o'clock Secretary Root and party went to the city hall where the public reception was held.

At 11:30 o'clock Secretary Root and party went to the city hall where the public reception was held.

At 11:30 o'clock Secretary Root and party went to the city hall where the public reception was held.

At 11:30 o'clock Secretary Root and party went to the city hall where the public reception was held.

At 11:30 o'clock Secretary Root and party went to the city hall where the public reception was held.

At 11:30 o'clock Secretary Root and party went to the city hall where the public reception was held.

At 11:30 o'clock Secretary Root and party went to the city hall where the public reception was held.

At 11:30 o'clock Secretary Root and party went to the city hall where the public reception was held.

At 11:30 o'clock Secretary Root and party went to the city hall where the public reception was held.

At 11:30 o'clock Secretary Root and party went to the city hall where the public reception was held.

At 11:30 o'clock Secretary Root and party went to the city hall where the public reception was held.

WRECK KILLS EIGHT

A Collision of Swiftly Moving Passenger Trains

Chicago and Wheeling Express on the Baltimore & Ohio Railroad Dashed into a Freight Train on a Siding at Bellaire, O.—Fifteen Are Instantly Killed and a Score Injured, Many of Them Fatally.

The Chicago and Wheeling Express on the Baltimore & Ohio Railroad dashed into a freight train on a siding at Bellaire, O., at 3:15 Saturday afternoon...

The wreck was due, it is said, to the failure of an operator to throw a switch.

The wreck was due, it is said, to the failure of an operator to throw a switch.

The wreck was due, it is said, to the failure of an operator to throw a switch.

The wreck was due, it is said, to the failure of an operator to throw a switch.

The wreck was due, it is said, to the failure of an operator to throw a switch.

The wreck was due, it is said, to the failure of an operator to throw a switch.

The wreck was due, it is said, to the failure of an operator to throw a switch.

The wreck was due, it is said, to the failure of an operator to throw a switch.

The wreck was due, it is said, to the failure of an operator to throw a switch.

The wreck was due, it is said, to the failure of an operator to throw a switch.

The wreck was due, it is said, to the failure of an operator to throw a switch.

The wreck was due, it is said, to the failure of an operator to throw a switch.

The wreck was due, it is said, to the failure of an operator to throw a switch.

The wreck was due, it is said, to the failure of an operator to throw a switch.

The wreck was due, it is said, to the failure of an operator to throw a switch.

The wreck was due, it is said, to the failure of an operator to throw a switch.

MANY PASSENGERS INJURED

The Chicago and Wheeling Express on the Baltimore & Ohio Railroad Dashed into a Freight Train on a Siding at Bellaire, O.—Fifteen Are Instantly Killed and a Score Injured, Many of Them Fatally.

The Chicago and Wheeling Express on the Baltimore & Ohio Railroad dashed into a freight train on a siding at Bellaire, O., at 3:15 Saturday afternoon...

The wreck was due, it is said, to the failure of an operator to throw a switch.

The wreck was due, it is said, to the failure of an operator to throw a switch.

The wreck was due, it is said, to the failure of an operator to throw a switch.

The wreck was due, it is said, to the failure of an operator to throw a switch.

The wreck was due, it is said, to the failure of an operator to throw a switch.

The wreck was due, it is said, to the failure of an operator to throw a switch.

The wreck was due, it is said, to the failure of an operator to throw a switch.

The wreck was due, it is said, to the failure of an operator to throw a switch.

The wreck was due, it is said, to the failure of an operator to throw a switch.

The wreck was due, it is said, to the failure of an operator to throw a switch.

The wreck was due, it is said, to the failure of an operator to throw a switch.

The wreck was due, it is said, to the failure of an operator to throw a switch.

The wreck was due, it is said, to the failure of an operator to throw a switch.

The wreck was due, it is said, to the failure of an operator to throw a switch.

The wreck was due, it is said, to the failure of an operator to throw a switch.

The wreck was due, it is said, to the failure of an operator to throw a switch.

The wreck was due, it is said, to the failure of an operator to throw a switch.