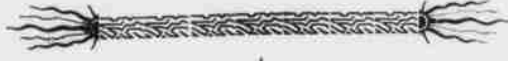


# Bridges In Randolph County Built by Democratic Board of Commissioners.

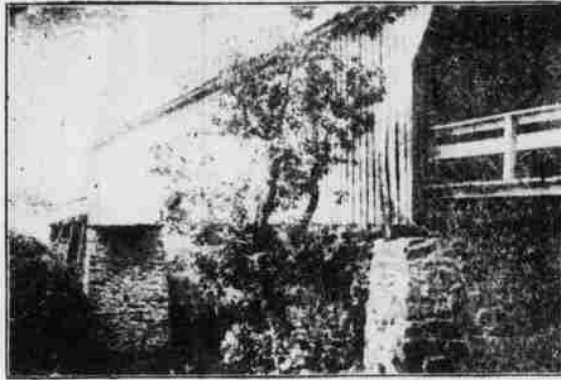


## Democratic Economy Exemplified.

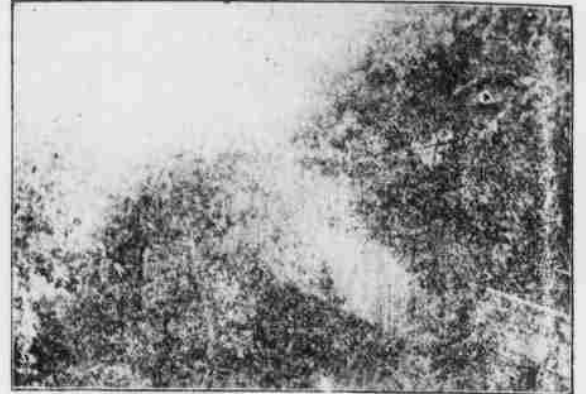
The present Democratic Board of County Commissioners whose term expires January 1st, 1908, have been of recognized service to the people of Randolph County. Through their economy in disbursing the people's money many improvements of value have been made for the benefit of the public. The accompanying views present a few of the excellent bridges, safe and strong, constructed at the request of the people. Every dollar of the people's money has been spent for the public good by Democratic Commissioners; whereas, during Republican administrations no bridges were constructed and public funds were squandered.



Bridge Across Deep River at Randleman



Bridge Across Deep River at Stanley Garner's



Bridge at Stanley Garner's



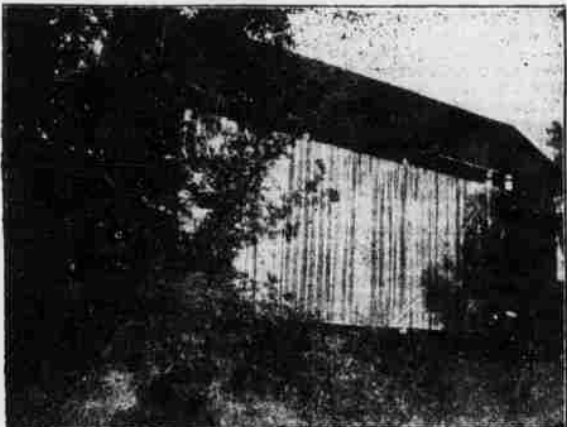
Bridge Across Little River at Williams Place



Bridge Across Uwharrie at Lassiter's Mill (End View)



Across Tom's Creek in Concord



Bridge Across Uwharrie at Lassiter's Mill (Side View)



Bridge Across Deep River at Island Ford



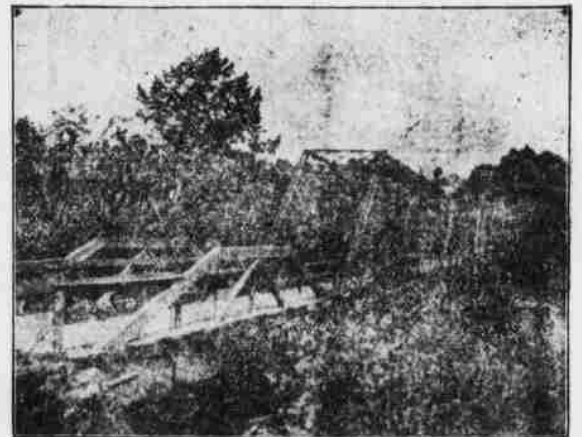
Bridge at Naomi



Bridge Across Richland at Spoon's Mill



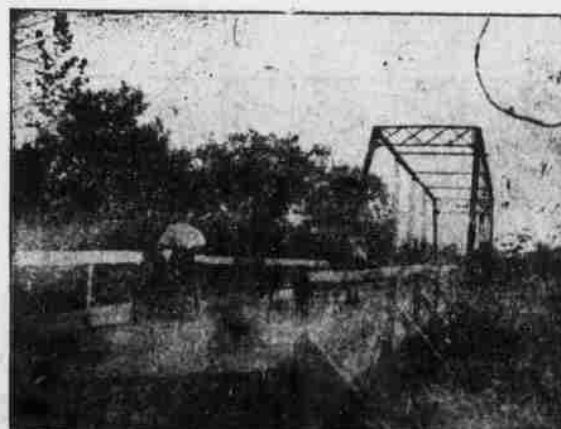
Building Bridge Across Richland at Moffitt's Mill



Across Deep River at Enterprise



Bridge Across Bruah Breek at Cheek's Mill



Bridge Across Deep River at Naomi Falls



Dunbar Bridge at Farmer