

THE DAILY COURIER

ASHEBORO, N. C., TUESDAY, AUGUST 31, 1937

NUMBER 96

The Largest Paid-Up Circulation of Any Newspaper Published in Randolph County

"Over 10,000 People Welcome You to Asheboro, the Center of North Carolina"

FLEET COMMANDER CLOSES SHANGHAI PORT

Cholera Breaks Out In French Concession 2,000 Americans There

Closed Port Now Maroons Citizens

Intestinal Plague Stalks Into Shanghai Last Midnight

No Evacuation

Chinese Pilots Who Bombed Hoover Called For Military Court

Shanghai, Aug. 31.—(AP)—Cholera broke out tonight near the French concession, where most of the citizens of the United States live.

The outbreak became known shortly before midnight after a day in which United States authorities closed the port of Shanghai to all American shipping except naval vessels, thereby marooning 2,000 Americans who have not been evacuated from the war zone of the Sino-Japan war zone.

The French concession took every measure to halt the spread of the deadly intestinal affliction, which yearly takes its toll of under-100 Orientals.

Little Jamboree At Fair Grounds

District Secretary Will Attend; All Adults Invited To Attend

Plans for the "Little Jamboree" of Boy Scouts at the fair grounds, Thursday evening, September 2, are rapidly rounding into shape.

Troop 27, Asheboro, will play hosts to all other scouts and troops in the county, in a welcome home to David Stedman, the only Randolph scout fortunate enough to attend the International Jamboree in Europe this summer.

Bunn Hackney, High Point, secretary of the Uwharrie district council will be present. He plans to bring scouts from other sections of the district, many of whom attended the European conference.

There will be a winner roast and watermelon feast. Adults interested in youth and the boy scout movement are cordially invited to attend the gathering.

Kill Three Jews

Jerusalem, Aug. 31.—(AP)—Waste torn Palestine was on edge tonight while police and troops prepared to quell violence which followed disorders yesterday.

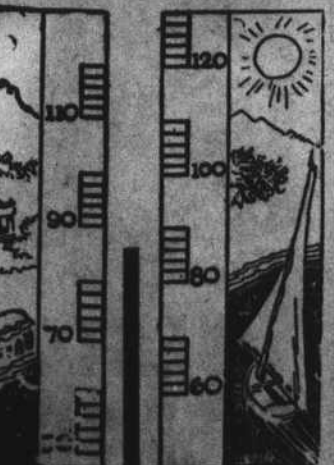
Three Jews and two Arabs were killed. Wide-eyed fear of another outbreak similar to that of yesterday is feared.

Special City-Wide Union Service For Women Tonight

Clerk Suicide

Lumberton, Aug. 31.—D. K. Gregory, 57, well-known Lumberton clerk, committed suicide by shooting himself through the heart at his room yesterday.

The Highest Temperature Of The Last 24 Hours



THE WEATHER
North Carolina. Partly cloudy today and Wednesday. Possibly scattered showers in the south and west portions.

Takes Over Helm of U.P. System



Rising from the position of office boy, William M. Jeffers, 61, above, will climax 47 years' employment with the Union Pacific railroad when he becomes president of the entire system on Oct. 1. He succeeds Carl R. Ray who submitted his resignation when he reached the automatic retirement age of 70. Jeffers now is executive vice president of the railroad.

Cripple Clinic Thursday, Sept. 2

Rotary Club and Rotary Anns Continued Plan to Aid Children

The Crippled Children's clinic will take place at the Randolph hospital Thursday morning, September 2, at 10 o'clock. The clinic is sponsored by the Asheboro Rotary club.

Direct supervision, insofar as procuring vehicles and other arrangements have been in the hands of the Rotary Anns since the club inaugurated the clinic.

Grocery Store Hours

Hours for grocery stores in the city of Asheboro, according to an announcement today will be from 7 a. m. to 6 p. m. daily, except Saturday. The Saturday hours will be from 7 a. m. until 9 p. m.

Dr. Anderson Conducts Feature Evangelistic Programs Nightly

The Union Evangelistic services, sponsored by the Asheboro churches opened Sunday night with Dr. George W. Anderson, noted evangelist in charge. Dr. Anderson was assisted by pastor of local churches and Dr. Louis F. Gains, pastor of the First Baptist church, Lexington. Dr. Gains has charge of the musical program.

A feature of the service will be the one hour prayer and song services each morning at 10 o'clock. There will be no Monday services. Evening services will open at 7:30 o'clock.

Tonight's service as been designated as Women Night. Wednesday will be Men's Night, Thursday, Hospitality Night and Friday, Young Peoples Night.

Sunday will be marked with a special afternoon service at 3 o'clock, designated a Prayer Service.

Saturday night as been designated "Bald Heads", a lecture Dr. Anderson gave at the Chautauque.

He and the committee extend a cordial invitation for all residents of the county to make a special effort to attend the meetings. They point out that shoppers may handle their week-end purchases and be able to attend the Saturday night meetings.

Seven Killed In Cross Country Bus And Auto Collision

Greyhound Overturns; Car Demolished; Injured Rushed to Hospital.

Car Driver's Fault

Took Auto Onto Roadway And Struck Large 40-Passenger Vehicle.

Gosher, Ind., Aug. 31.—(AP)—At least 7 persons were killed and several wounded in the crash of a heavily loaded Greyhound transcontinental bus and a sedan near here today.

Twenty of the injured were brought to a hospital here and at least 15 others were taken to nearby cities.

The accident occurred at the intersection of two roads. Witnesses said the sedan drove onto the highway and crashed into the bus. The vehicle overturned and came to a stop on its top. The sedan was demolished. About 40 passengers were on the bus. The occupants of the sedan were unknown.

The driver of the bus was Lee Callahan, 32, of Toledo. The bus was traveling from Chicago to Cleveland. Ambulances from Gosher and Elkhart were rushed to the scene. Some of the dead and injured were taken to widely scattered hospitals making immediate identification difficult.

Phelps Injured When Car Wrecks

Turnersville Man Taken To Hospital; Right Arm Fractured.

J. L. Phelps, Kernersville, N. C., is confined to the Randolph hospital with a fractured right arm sustained last night when the automobile he was driving overturned near Seagrave. Mr. Phelps' car was laden with tobacco enroute to the market at Farmington. He was taken to the hospital where today he was reported to be in a satisfactory condition.

Kennedy Charged With Auto Theft

Locked Up in Jail; is Accused Of Taking J. R. Routh's Automobile.

Jesse Kennedy, who resides south of Asheboro, is locked up in the county jail charged with larceny in connection with the alleged theft of J. F. Routh's automobile. He is also charged with taking two tires from the machine and selling them to a local merchant. The automobile was taken from its parking place in Asheboro about two weeks ago. Kennedy was arrested yesterday.

Mrs. J. R. Craven Injured In Crash

Asheboro Woman Taken To Hospital; Car Struck In Rear.

Mrs. J. R. Craven is confined to the Randolph hospital with injuries sustained Sunday evening at 6:45 o'clock when the automobile in which she was riding struck by one driven by Earl Shaw. According to reports, the Shaw car ran into the rear of the Craven automobile. Mr. Craven was driving and with him were Mrs. Craven and their small child. Mr. Craven was thrown from the car. According to reports of the affair, the force of the collision tore Mr. Craven's shoes from his feet.

Farlow's ambulance was called to the scene and carried Mr. and Mrs. Craven and their daughter to the hospital. Mrs. Craven was unconscious when admitted but was reported to be recovering this afternoon. Mr. Shaw was not injured.

Blockade Runner

Seattle, Aug. 31.—(AP)—Manned by a crew of 27 Chinese and a Norwegian master, Capt. F. C. Norrick, the rusty tramp steamer Hia Da was outfitting here today to run the Japanese naval blockade with a cargo of 6,000 tons of sulphur, in addition to gunpowder. Special guards patrolled the pier.

Clever Chinese Shanghai Chief



Gen. Faj Chung-Hse, China's most brilliant strategist and recently believed at odds with the Nanking government, is now reported in command in Shanghai region where he is stated to have ordered a tactical withdrawal.

President Signs Fifteen New Bills

Vetoes Many Because He Hesitates to Take Large Sums From U. S. General Fund.

Hyde Park, N. Y., Aug. 31.—(AP)—President Roosevelt announced today the signing of 15 more bills, including measures aimed at both floods and droughts. He also vetoed two more minor proposals passed in the closing days of Congress.

Besides signing into law the 1937 flood control bill authorizing \$34,177,000 of new projects, mostly in the Ohio valley, he approved a senate measure to promote water conservation, and proper land use projects in the dry region of the west, under a program to be formulated by the department of agriculture.

One of his vetoes rejected a bill which would have appropriated \$294,852 out of the treasury for division among various veterans' organizations for use in aiding destitute or unemployed veterans and their dependents. He said: "I find myself unable to agree with the present proposal to provide out of the general fund of the treasury, for the donation to private agencies of funds to which they have no claim, and to the expenditure of which the usual governmental safeguards would not apply."

He also withheld approval of a senate bill authorizing a \$30,000 appropriation for co-operating with a public school board of Kootenai county, Idaho, to build an additional school at Worley, Idaho.

The President signed the flood control measure despite his disapproval of a provision giving him discretionary authority to remit up to 50 per cent of property contributions now required by cities and towns. He had announced previously he would have preferred that Congress itself decide this on the merits of each case.

Of the \$34,177,000 authorized, \$24,877,000 would go for flood wall protection for population centers in the Ohio valley and \$9,000,000 for control works along Wolf river and Nonconah creek at Memphis.

Army engineers surveys on many streams also is provided. The "dust bowl" bill that won approval declares a policy of Congress to assist in providing facilities for water storage and utilization in arid and semi-arid areas.

To effectuate this policy, it authorizes the secretary of agriculture to:

1. Formulate and keep current a program of projects for construction and maintenance of ponds, reservoirs, wells, check dams and pumping installations in areas where it would promote "proper utilization" of lands.
2. Construct and sell or lease, with or without money consideration, such facilities.
3. Co-operate or enter into agreements with, or furnish financial aid, to individuals and local agencies.

The secretary could require the enactment of state and local laws on conservation, and contributions in money, services, and materials to any operation conferring benefits.

Washington, Aug. 31.—(AP)—Japan's military machine is functioning with the aid of scrap iron from the United States, government and business statistics indicated tonight.

China Agrees To Compensate Fully For Hoover Attack

Accept Full Responsibility For "Regrettable" Affair; Ambassador Calls.

Forwards Apology

Hull Says Government Is Appreciative of Act Of Promptness.

Washington, Aug. 31.—(AP)—The Chinese government proposed today full financial and moral redress for the bombing yesterday of the American Dollar liner President Hoover.

Secretary Hull said profound regret of the Chinese government and its authorization to compensate, fully, was made to Ambassador Nelson Johnson at Nanking and that Dr. C. T. Wang, ambassador of China called upon Secretary Hull this morning.

Asked at his press conference, if the apology and statement from the Chinese government was satisfactory to this government, Mr. Hull said he was merely relating what had happened so far. He declined further comment. He added, however, the United States was deeply appreciative of the promptness which the Chinese government accepted responsibility of the bombing and its accompanying apology.

The Chinese government, Mr. Hull said, was specially interested in all matters of the incident and promised the pilot of the ships would be courts martialled and severely punished.

Secretary Hull said the incident was unlawful and inexcusable.

Cotton Loans To Farmers Sept. 15

Participation Confined To Those Agreeing to Comply With Laws.

Washington, Aug. 31.—(AP)—Secretary Wallace gave the starting signal for the government's 1937 program for cotton loans and notified growers their loans would be "ready not later than September 15."

Participation in the loan subsidy arrangements, designed to bolster prices in this year's large production, will be limited to those who agree to comply with the control measure to be enacted next session.

Secretary Wallace said the government will lend up to 9 cents a pound on the 1937 crop, depending on the grade. Subsidies up to 5 cents a pound on 65 percent of the growers base production will be allowed.

Cotton brokers generally expressed opinions that the loan program was "conservative" and gave assurances of three good markets.

Jap Troops Heed French Complaint

Agree to Keep Armies From British and French Zone After Dark.

Washington, Aug. 31.—(AP)—Well informed persons said today they understood Japan had agreed to keep troops out of the foreign concession at Tientsin China. An unconfirmed report received here, was to the effect that British and French authorities had complained of an attack of Japanese troops Sunday against police who were trying to maintain order. British and French authorities notified the Japanese that troops would not be permitted to pass through the concession after midnight last night.

The Japanese immediately announced that night troop movements would cease.

Jack Hayworth Is Slightly Better

The many friends of Jack Hayworth will be delighted to know that his condition today is decidedly more favorable. Having been very critically ill for two weeks, people of the town and county have awaited news of him daily during that time.

His temperature today, while still over 101, is lower than for more than a week and he was able to take a very little nourishment. His family and physicians are slightly encouraged with today's report and his friends are also delighted with better news.

Derailed Locomotive Blocks Highway For Hour in City Center

Traffic Tied Up In Sunset Avenue

High Point Engine Leaves Rails; Hauls Loaded Box Car With It.

Coal Car Jumps

Previous Derailed at General Lumber Plant's Switching "Y."

Street traffic through Sunset avenue was curtailed for nearly an hour this afternoon when a High Point, Randelman, Asheboro and Southern railroad locomotive jumped the tracks and hauled a box car with it.

The locomotive was backing the box car on the Old Dominion Box company's siding when it and the car were both derailed. The locomotive was directly on the highway blocking automobile traffic.

A locomotive from the Norfolk and Southern railroad company's equipment hauled the locomotive and car back onto the tracks.

Just about ten minutes prior to the time the locomotive was derailed, on Sunset avenue, a coal car was derailed at the "Y" near the General Lumber company's plant. A Norfolk and Southern engine hauled that car back onto the tracks.

City police, under direction of Chief Bulla detoured automobile traffic through the side streets to prevent congestion at the scene.

Nine Cent Loan For '37 Cotton

Final Plans Completed By Credit Concern; 65 Per Cent Basis.

Washington, Aug. 31.—Cotton farmers will be given a nine-cent-a-pound loan on their 1937 cotton crop, it was announced today as the agricultural department and commodity credit corporation worked out final details of the price adjustment plan. In addition, each grower participating in next year's production control program will be eligible for a maximum subsidy of three cents a pound on 65 per cent of this year's basis production.

New Map of Asheboro Now Ready; Shows Industries

Prepared at No Expense To City; Census, Streets And Avenues Marked.

R. D. Trogdon, civil engineer, has completed a map of the city of Asheboro which shows every street and avenue, the individual manufacturing plants and many other buildings located within the city limits.

The map is drawn to a scale of 1 inch to 200 feet. The names of the owners of properties together with the book and page number of deed registration in the Randolph county court house are included upon the map. All streets, running north and south and, avenues, running east and west, are plainly marked on the map. There are 110 streets and avenues running east and west and 105 highways or streets running north and south.

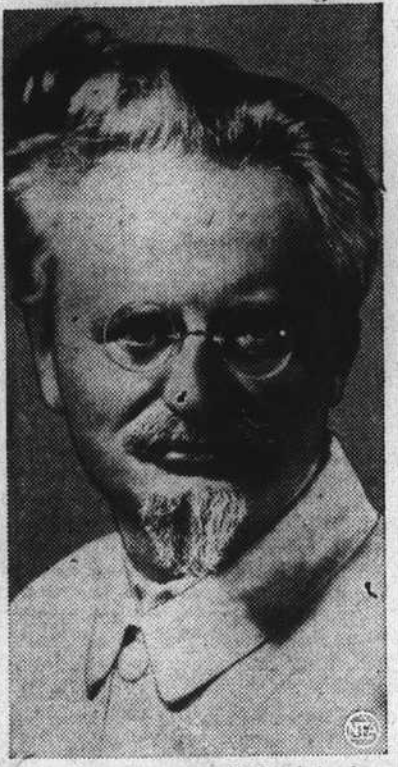
The map calls attention to the present population of 10,350 and also cites the 1930 population of 5,021. The city according to engineer Trogdon is 846.71 feet above sea level.

The town of Asheboro was chartered December 25, 1796.

Asheboro now contains 3,064 square miles or 1961 acres.

The new map also shows a large section of the Municipal Golf links and the entire sector of the new city-owned cemetery. It also includes a small insert of a map of the town as constituted in 1843.

Exile Trotsky Worries Soviet



One name scares little tots in the Soviet Union, brings dread to high offices in the Kremlin, keeps Comrade Stalin awake nights—Leon Trotsky. The famous exile from Soviet Russia, once the daddy of the Red army, posed in Mexico for this latest—and best portrait.

Peace Pleas Mark Veterans Session

Vandenberg and National Commander Urge Plan For End of Wars.

Buffalo, N. Y., Aug. 31.—(AP)—A volley of peace pleas bombarded the nation's Veterans of Foreign Wars yesterday as the ex-warriors opened their 38th annual encampment.

Senator Arthur H. Vandenberg, Michigan republican, fired the heaviest projectile when he called for "legislation—now—which takes the profit out of any future war."

On the firing line with him stood National Commander-in-Chief Bernard W. Kearney of Gloversville, N. Y., who asked his aging army comrades to get behind an eight-point program that included "federalizing" the arms industry.

New Map of Asheboro Now Ready; Shows Industries

Prepared at No Expense To City; Census, Streets And Avenues Marked.

R. D. Trogdon, civil engineer, has completed a map of the city of Asheboro which shows every street and avenue, the individual manufacturing plants and many other buildings located within the city limits.

The map is drawn to a scale of 1 inch to 200 feet. The names of the owners of properties together with the book and page number of deed registration in the Randolph county court house are included upon the map. All streets, running north and south and, avenues, running east and west, are plainly marked on the map. There are 110 streets and avenues running east and west and 105 highways or streets running north and south.

The map calls attention to the present population of 10,350 and also cites the 1930 population of 5,021. The city according to engineer Trogdon is 846.71 feet above sea level.

The town of Asheboro was chartered December 25, 1796.

Asheboro now contains 3,064 square miles or 1961 acres.

The new map also shows a large section of the Municipal Golf links and the entire sector of the new city-owned cemetery. It also includes a small insert of a map of the town as constituted in 1843.

Second Bombing Of Mercy Fleet Ends In Port Blockade

Closed to American Ships Except Fighting Craft; Perils Increase.

Italian Ship Hit

Was Conveying Refugees From Shanghai Zone; Evacuation Ends.

Shanghai, Aug. 31.—(AP)—United States authorities closed the port of Shanghai today to all American ships except naval vessels following the second air attack on a mercy ship in two days which has increased the peril of civilian life at sea in Chinese waters.

Air bombers of unknown identity bombed the Italian operated steamer, Lung Shan, a 2,700 ton vessel thronged with Chinese refugees. It caused near-panic on board but caused no damage to the ship. The bombing took place near Woosung, north of Shanghai.

General Chiang Kai-shek, military commander of war torn China immediately requested foreign interference to end hostilities warning at Nanking that "Japanese aggression" to establish "a continental empire for herself" is a threat not only to China but to "international safety."

The attack on the Italian vessel followed by one day the bombing of the U. S. Dollar liner President Hoover, by Chinese planes in the China seas yesterday.

On the Shanghai battle front Japanese commanders declared Japanese forces had captured Woosung, 12 miles north of Shanghai, marking the outset of "big push" against the city's Chinese troops.

A terrific bombardment which resounded through the international settlement was evidently the first stage of an enveloping offensive developing through the Kiangwan sector, the "back door" to the north. Japanese officials said the Shanghai north station was bombed.

Before the attack and fire of planes and heavy artillery began, the Japanese army and foreign force combined forces to drive 12,000 bewildered Chinese from their homes on the Shanghai side.

Japanese warning of the native population of impending attack was believed to have been inspired by sharp reaction abroad against surprise Japanese attacks in which thousands of Chinese have been killed or maimed.

Advices from Peiping said American consulate officers in northern China are alarmed for the safety of 99 United States missionaries who have not been heard from since the college was evacuated several days ago.

In Geneva, meanwhile, Chinese delegates to the League of Nations placed the whole blame of war on Japan's policy of "military conquest."

The Chinese called it an "aggression pure and simple" but framed it in a letter instead of an appeal.

The closing of Shanghai's port for United States merchant vessels by Admiral Yarnell, commander of the Asiatic fleet and Consul General Clarence Gauss, was the result of the bombing yesterday of the President Hoover.

The effect of the action was to maroon 2,000 Americans including 500 women and children in the war torn city. Because of the absence of naval vessels no decision of the best plan of taking United States citizens from the city has been reached.

Washington, Aug. 31.—(AP)—The closing of the port of Shanghai to American shipping today raised possibilities of similar action towards any other Chinese port which becomes involved in major hostilities.

Admiral Harry Yarnell and Consul General Clarence Gauss ordered all vessels flying the American flag, except naval vessels to keep out of Shanghai.

The first reaction here was the announcement here by Secretary of State Cordell Hull, that the American ambassador, Nelson Johnson would make a strong protest to the Chinese government.

Tientsin, Aug. 31.—(AP)—Japanese military censorship of news covering the North China conflict was tightened drastically today. Japanese army headquarters issued written orders forbidding individual newsmen to go to the front for any first hand observations unless under direct supervision of a Japanese officer who "must be obeyed."