

THE ADVANCE

SUBSCRIPTION PRICE: DAILY, one year, \$6.00; six months, 3.00; one month, .50; WEEKLY, one year, 1.00

THEODORE HOBGOOD, Editor and Proprietor.

SUNDAY, SEPT. 25, 1888.

THE ADVANCE. I want to show you a new and wonderful thing that arrived from the South...

Against the Use of Slang. A little intentional waywardness grows to a habit...

Foreign and American Cemeteries. I do not think that either Pere La Chaise or Kensal Green are as naturally beautiful as Greenwood in Brooklyn...

Philosophy About Lightning. A case of serious illness from fright in a thunder-storm has been reported...

Krupp's Big Business. Alfred Krupp owns probably the largest business in the world dependent on one individual...

Great Britain's Machinery. The statement is made that all the varied machinery of Great Britain, now operated by steam power...

Berlin's Consumption of Eggs. The annual consumption of eggs in Berlin amounts to 11,944 tons, or 191,107,920 eggs...

UNDOUBTEDLY COMING, Full-Fledged to the Sunny South.

The Biggest, Greatest and in all Things the Best Show that Ever Exhibited in this State.

The Only Big Railroad Circus and Monster Menagerie Coming this year will positively exhibit at

ASHEVILLE SATURDAY, SEPT. 25.

JOHN B. DORIS' Great Inter-Ocean Circus,

MANAGERIE, MUSEUM, GREAT RACING CARNIVAL AND WORD'S EXPOSITION OF NOVELTIES.

THE ONE and ONLY SHOW WHICH EXHIBITS IN THE SOUTHERN CITIES

The same performers, precisely the same Hugo Tents, precisely the same Mammoth Railroad and Lot Equipments.

Added to immensely and shows of novelties, it will exhibit precisely as it did in its former tour...

THE ONE and ONLY SHOW WHICH EXHIBITS IN THE SOUTHERN CITIES

THE ONLY SHOW FOR WHICH COURTS ADJOURN.

Produces such a fearless, dashing and valorous Equestrian Sachem as is JAMES ROBINSON!

JUMBO Chief,--Empress,--Queen, We Challenge The World. THE ONLY MAN WHO RIDES.

OUR GRAND STREET PARADE. Will take place at 10 a. m. Don't miss it. Excursions on all railroads.

EUROPEAN RESTAURANT, BAKERY AND ICE CREAM PARLOR.

Have opened on South Main street, in Deane's old stand, an elegant Restaurant, Bakery, Ice Cream Parlor and Confectionery.

Swift's Specific. Is nature's own remedy, made from root gathered from the forests of Georgia.

Vegetable Blood Purifier. Cancer, Catarrh, Scrofula, Eczema, Ulcers, Rheumatism, Blood Taint, Indigestion or otherwise, without the use of mercury or poisons.

Western Union Institute, ASHEVILLE, N. C. For Colored People.

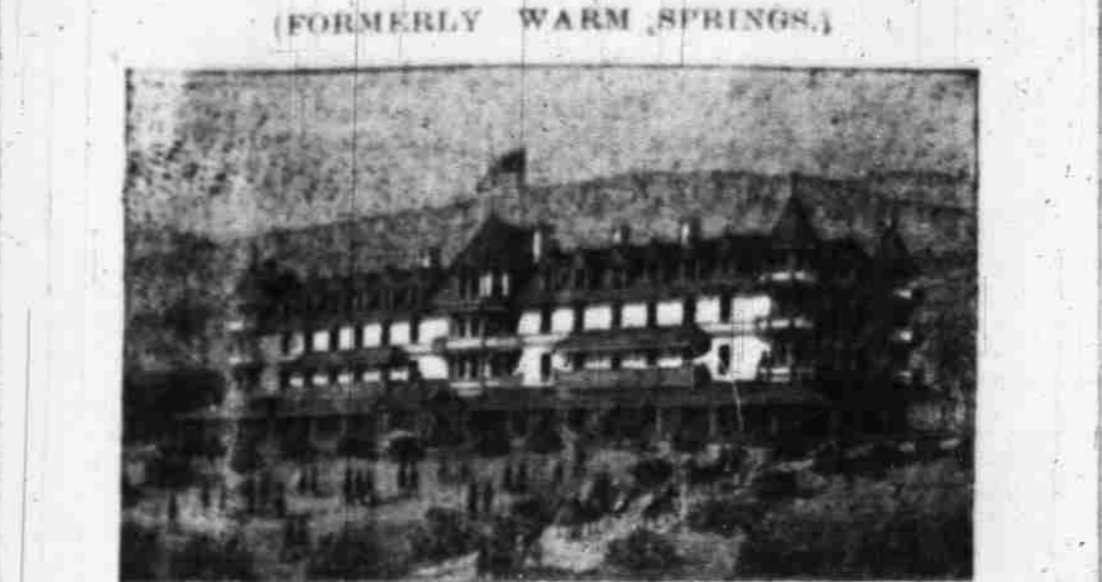
The next session will open on the First Monday in October.

Trustees. Rev. A. A. Powell, President, Charlotte, N. C. Rev. W. W. Landrum, D. D., Richmond, Va.

NOTICE TO TOBACCO PLANTERS. We, the undersigned, Warehousemen of Asheville, find that we have lost large sums of money by sending empty tierces to the country.

THE NEW Mountain Park Hotel,

Hot Springs, N. C. (FORMERLY WARM SPRINGS.)



The Baths at this celebrated resort are now finished. For curative purposes or as a luxury, they are unsurpassed.

THE HOTEL IS MODERN AND FIRST-CLASS IN EVERY RESPECT.

and all departments are maintained at the highest standard of excellence.

Leave Asheville, 10.00 a. m. Arrive at Hot Springs, 12.30 p. m. Leave Hot Springs, 3.00 p. m. Arrive Asheville, 5.00 p. m.

Round Trip Tickets, \$1.85.

Visitors and citizens of Asheville are here offered a most delightful excursion, a beautiful and interesting trip to the picturesque French Broad, and ample time at the Hot Springs, N. C.

B. P. CHATFIELD, Proprietor.

Highland Park Hotel, AIKEN, S. C., THE POPULAR WINTER RESORT.

THE NIAGARA OF THE SOUTH, TALLULAH FALLS, GEORGIA, ON THE PIEDMONT AIR-LINE.

TRAINS LEAVING ASHEVILLE IN THE MORNING ARRIVE AT THE FALLS THE SAME EVENING.

CLIFF HOUSE AND COTTAGES located on the brink of the Grand Chasm, within 100 yards of the Falls.

From the verandahs of which, overhanging the Grand Chasm, there is magnificent view of the rapids and chasms.

W. R. Bearden & Co., Manufacturers and dealers in Stoves, Tinware and House Furnishing Goods.

PLUMBING, ROOFING and CUTTING A SPECIALTY. We carry a large stock of goods in our line and endeavor at all times to give the most general satisfaction to our customers.

GRANT & ROSEBERRY, PHARMACUTICAL CHEMISTS. Having purchased the Drug Store of Mr. C. W. DEVAULT, we will be glad to meet his many customers.

BANK of ASHEVILLE, ESTABLISHED 1879. J. P. SAWYER, President. D. U. WADDELL, Cashier.

DESIGNATED STATE DEPOSITORY. AUTHORIZED CAPITAL, \$500,000. PAID UP CAPITAL, \$100,000. SURPLUS FUND, \$10,000.

General Banking business transacted. Burglar and Fire-proof Safe Boxes for rent on reasonable terms.

General Banking business transacted. Burglar and Fire-proof Safe Boxes for rent on reasonable terms. The Bank will be open in transaction of business from 8:30 a. m. to 3 p. m.

THE WHITE MAN'S BAR

CORNER MAIN AND EAGLE STREETS. Under WHITLOCK'S STORE.

Jas. H. Loughran, Proprietor.

Headquarters for fine LIQUORS. I keep none but the PUREST, and charge accordingly. My

WHISKEYS AND WINES ARE ABSOLUTELY PURE AND UNADULTERATED,

and are recommended by the best judges for medicinal use. Also fine

BILLIARD AND POOL PARLOR.

Goods shipped to all points. No charge for boxing. P. O. Box 309 ASHEVILLE, N. C.

THE ONLY STRICTLY WHITE MAN'S BAR IN THE STATE

GROWTH OF ASHEVILLE!

First we vote to spend \$100,000 improving our

Beautiful Mountain City,

All kinds of business improved thereby, property on the boom, "more building" a demand for another LUMBER YARD, you have it.

The Asheville Lumber Company,

North-east Court House Square, Will keep a full line of building stock dry, nicely assorted and piled, at lowest market prices. Call and see us.

June 24th 1888. RUSSELL BROTHERS, Proprietors.

"LAND OF THE SKY," FAR IN THE LEAD.

THE STAR OF BUNCOMBE. GREAT SUCCESS OF THE GRAND CENTRAL HOTEL.

21,000 Arrivals in Three Years.

300 in the last 10 days. The compliments and praise of our guests are sweeter than brass band or orchestra. Come to the Grand Central for nice cool rooms and best fare in the city.

W. O. MULLER & CO., DISTILLERS AGENTS, And Dealers In FINE LIQUORS, CIGARS AND TOBACCO.

Main Street, Opposite Public Square, Asheville, N. C.

Thankful to our friends and patrons for their liberal patronage bestowed upon us in the past, we hope by continued exertions on our part and a FIRST CLASS STOCK of all kinds of goods in our line to select from, to continue to meet their favor.

Duffy Barley Malt Whisky,

which has attained a wide reputation for medicinal use, being absolutely pure and unadulterated. We are Agents for the celebrated BUDWEISER and ULMER LAGER BEER.

OUR POOL AND BILLIARD HALL. On Second Floor, is furnished with the celebrated Brunswick, Balke Calender Co's Tables. Telephone No. 33.

Advertisement for J. H. WOODY, featuring a large illustration of a bicycle and text: 'I PREPARED TO MAKE TO ORDER IN THE BEST STYLE AND MANNER... WHEELS AND SPRINGS...'

J. D. McCANDLESS Keeps constantly on hand Fresh Family Groceries of every description, TOBACCO, SEGARS, CONFECTIONERIES, &c. CHINESE LAUNDRY, HOP WO, UNDER LEVY'S, SOUTH MAIN ST.