

Sylvan Valley News

ONLY NEWSPAPER IN TRANSYLVANIA COUNTY

J. J. MINER, OWNER AND MANAGER

A HOME PAPER FOR HOME PEOPLE—ALL HOME PRINT

VOLUME XIV

BREVARD, NORTH CAROLINA, DECEMBER 10, 1909.

NUMBER 49

Home Course In Modern Agriculture

XII.—The Selection and Care of Farm Machinery

By C. V. GREGORY,
Agricultural Division, Iowa State College
Copyright, 1909, by American Press Association

THE methods of farming followed today are made possible only by the use of modern labor saving machinery. The farm hand of today needs brains more than muscles. The ability to handle a complicated machine successfully is more valuable than the power to do a hard day's manual labor.

With the coming of improved machinery the problem of what to buy and what to get along without has become a serious one. The farmer has more money tied up in machinery than in any one thing besides his land. Having too much machinery is nearly as bad as having too little. What is needed is a wise selection.

It is always well to do a little figuring before buying a new machine. Dividing the cost of the implement by the number of years it may be reasonably expected to last will give the amount that must be charged to depreciation each year. Add to this an allowance for repairs, storage and each year's share of the interest, and you will have the yearly cost of the machine. A little further figuring will show whether the benefit received from it in a year will warrant this cost.

Machinery may be roughly divided into five classes—tillage, planting, haying, harvesting and miscellaneous. Of the many tillage implements there are some that are absolutely necessary on any farm. Among these are the plows. For the farmer on a quarter section a sixteen inch riding plow will be all that is needed for the field work. In addition it may be well to have a cheap walking plow for plowing the garden, turning out potatoes and for use in case of an emergency. A gang plow requires too many horses to be practicable on the average 160 acre farm. On larger farms, where plenty of horses are available, a gang plow will save the time of an extra man. It is a good plan to have the plow supplied with two or three moldboards of different slants. A steep moldboard pulverizes the soil more and for this reason is a good thing to use on stubble land. On clover sod, however, a longer moldboard should be used in order to lessen the draft.

One of the most important tillage implements is the disk. No other machine will pulverize the soil so quickly or thoroughly. The use of a tongue truck—a small two wheeled arrangement—under the rear end of the tongue is of considerable advantage in taking the weight off the horses' necks. Solid wheel disks pulverize the ground more thoroughly than spaders or cutaways.

A good harrow is a necessity on any farm. The flexible type is best for all conditions, as it gets down into the hollows and rides over trash better than will a solid frame harrow. Spring tooth harrows, rollers and weeders all have their special uses, but can hardly be said to be necessary on the average quarter section. Next in order come the cultivators,

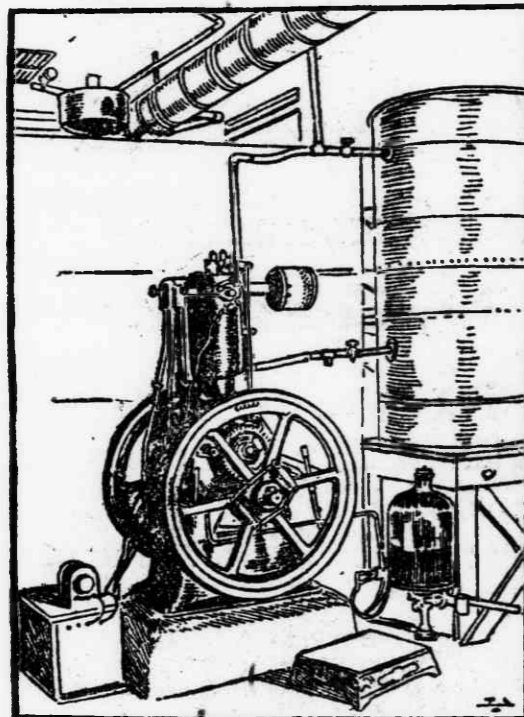


FIG. XXIII—A HANDY TYPE OF GASOLINE ENGINE.

and there are so many styles of these that choosing is a difficult matter. The most important part of the cultivator is the shovels. A happy medium is struck in the six shovel type. The shovels on this can be run deep enough to loosen the soil well the first two times over the field and can later be set shallow enough to avoid serious injury to the spreading roots. If you are in the corn business extensively enough to afford two sets of cultivators it is well to have special surface machines for the last two cultivations. Some companies make surface blades which can be attached in place of the shovels when so desired. In the hands of a careful man the two row cultivator does good and rapid work.

First in the line of planting machines come the seeders. While costing a little more at first, there is no better implement for sowing small grain than the disk drill. The disks cut through cornstalks and other trash, and the seed is deposited evenly and at a uniform depth. The resulting evenness of stand will cause an increased crop sufficient to pay the entire cost of the drill in a year or two.

In selecting a corn planter the runner type of furrow opener is preferable to the disk, since the latter is hard to guide. The essential point in planters, however, is the drop. If you are in the habit of grading your seed corn carefully so that the kernels are all about the same size the edge drop plates will give a more even stand than will the round hole drop. Planters in which the plates are turned by a chain from the axle and the wire used only to open the shoe are surer to drop every time than those in which all the work is done by the wire.

There are two haying implements that are absolutely essential, the mower and the rake. Be sure to pick a wide cut mower. Six feet is a good width. The extra draft amounts to little, and considerable time will be saved in going over the field.

Where much hay is made the old way of raking in bunches and pitching it on to the wagon by hand is too slow and laborious. A much better plan is to rake the hay into windrows with a side delivery rake and gather it up with a hay loader. Where the hay is put in the barn a set of double harpoon forks will make short work of the unloading. If it is to be stacked some form of stacker will save a great deal of hard work.

The most important harvesting machine is the self binder. The binder is

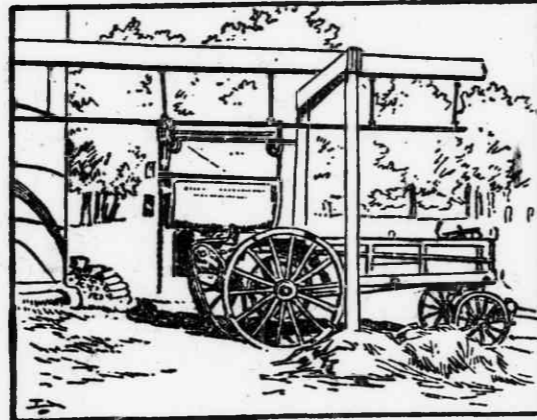


FIG. XXIV—LOADING THE MANURE SPREADER DIRECT FROM THE BARN WITH A LITTER CARRIER.

the most complicated machine on the farm and the one most likely to get out of order. In buying a binder simplicity of construction, ease of adjustment and handiness of oiling are important points to look after. A tongue truck is an attachment that should go with every binder. This is the only means of eliminating side draft that has yet been discovered. A tongue truck is rather expensive, but so are sore shoulders and necks on the horses at harvest time.

Where much stock is kept the corn binder is a necessary implement. By cutting a large share of the corn and using it as fodder or silage much feed is saved that would otherwise be wasted. About 40 per cent of the entire

feeding value of the corn plant is in the stalk. When these are left standing in the field the greater part of this feed is wasted. The shocked fodder may profitably be run through a shredder before feeding. This will husk the corn and leave the stalks in the best shape to be fed or used for bedding.

One of the most important of the miscellaneous implements is the windmill. No farmer can afford to pump water for his stock by hand when the wind will do it for nothing after the mill has once been put up. In erecting a windmill be sure that it is put on a high enough tower so that surrounding trees or buildings will not cut off the wind. A mill which is geared back so that the wheel makes three revolutions or so to one stroke of the pump will run in a lighter wind than will the straight geared type. A three legged tower is just as strong as a four and considerably cheaper.

A machine that is almost indispensable on a stock farm is the gasoline engine. The original cost of these engines is reasonable, and the amount required for fuel and repairs is small. With a gasoline engine to furnish the power to run a sheller and grinder feed can be cheaply and easily prepared for the stock. The engine will also saw wood, if you are fortunate enough to have any to saw, run the slage cutter, grindstone, separator, churn and washing machine. It may also replace the windmill as a source of power for pumping.

In selecting a gasoline engine be sure to get one large enough to do the required work easily, remembering at the same time that where much light work is to be done a small engine will do it with much less gasoline than will be used by a large one. This objection to a large engine can be overcome to a large extent by so arranging the work that several light machines may be run at the same time. The most reliable type of engine is the four cycle, in which there are two revolutions of the flywheel to one explosion. The water system of cooling is the most efficient, though air cooled engines are all right for light work.

Another necessary machine of the stock farm is the manure spreader. Not only does this save a great deal of work, but it also applies the manure more evenly and will cover a greater amount of ground with a given quantity of manure. There should be little wood in a manure spreader, since it rots out quickly.

TO COST \$3,000,000.

Up-To-Date Wire and Rod Plant For the Birmingham District.

Baltimore.—President William P. Palmer, of the American Steel and Wire company, has given out the information from Cleveland that the United Steel Corporation has authorized the building of an up-to-date wire and rod plant in the Birmingham district, without delay. President William E. Corey, of the steel corporation, is quoted as saying that the plant will adjoin Ensley and will have a capacity of 400 tons per day and will cost about \$3,000,000. The American Steel and Wire company is one of the leading subsidiary companies of the steel corporation, and the building by it of a rod and wire mill in the Birmingham district is in line with the policy which the steel corporation has displayed since it acquired the Tennessee Coal, Iron and Railroad company, that is the manufacturing to the fullest extent of the output of its furnaces and steel mill into finished products. The building of this wire and rod plant, which will doubtless employ several thousand men, will mark another great step forward for the iron and steel interests of the South.

Negro Assailant Shot to Death.
Bronson, Fla.—Attracted by the screams of Mrs. Becky Snowden, of this place, who was fighting a desperate battle with Steve Brown, a negro who had attacked and was choking her in an effort at criminal assault, Bart Faircloth, a white man, shot and instantly killed the negro.

Augusta Gets G. & F. Offices.
Douglas, Ga.—The offices of the Georgia and Florida railway will be moved at once from this place to Augusta. This announcement was made by General Manager J. M. Turner. The shops of the road, which have just been completed at a cost of \$300,000, will remain here.

Don't Rubber



It Isn't Polite.

Besides, you can read ALL the news in much more comfort if you subscribe for this paper.

Cashier Short \$50,000.

Anderson, S. C.—Secretary and Assistant Cashier Calhoun Harris, of the Orr Cotton Mills, of this city, has been found short in his accounts approximately \$50,000.

Harris was arrested by Constable Scott on a warrant issued by Magistrate Wilson at the instigation of President Hammett, of the mills. The warrant charged breach of trust and it is stated that other warrants against him will be issued.

Harris stoutly denies, however, misappropriation of any of the funds and says that the deficiency is due to clerical errors.

"Grace Darling" Saves More Lives.

Newport, R. I.—Ida Lewis, "the Grace Darling of America," who from Lime Rock lighthouse, off this harbor, had saved the lives of eighteen persons, added five more lives to her splendid record when a rowboat with five girls was capsized by a passing steamer. Ida Lewis is 68 years old, and for thirty years has kept burning the light of Lime Rock.

To Be Wage Increase.

Plainfield, Conn.—The wages of 1,000 cotton operatives at North Grosvenordale are to be increased 10 per cent August 16. As soon as the new tariff bill gets to working a general increase of the 6,000 cotton operatives in the country is looked for.

Aviator Dashed to Ground.

Lorient, France.—While experimenting with a new military aeroplane of his invention, Lieutenant Cross, of the French army, was caught in a squall and dashed to the ground. He sustained severe injuries on the head.

Flood in Tennessee.

Nashville, Tenn.—Nearly every business house and at least one-third of the residences at Rockwood, Tenn., were flooded as the result of a cloudburst. The rain descended for about an hour, and was accompanied by constant lightning.

Run Over by Train.

Anderson, S. C.—Robert M. Ritchie, a farmer 35 years old, was run over and killed at Pendleton by an excursion train on the Blue Ridge railway. It is presumed that he was drunk and went to sleep on the track. The body was horribly mangled, being cut nearly in two.

Launch Capsized—Three Drown.

Toledo, Ohio.—Two men and one woman were drowned, and seven men were rescued with difficulty when a launch, containing a gay party of merry-makers capsized in Maumee Bay, 500 feet off of the Casino, a summer theatre. All were residents of Toledo.

Flies Mile on Low Plane.

New York—C. S. Willard has made a flight with one of the Curtis aeroplanes on the course at Mineola, L. I. Willard got his machine four feet from the earth and kept it there, making a flight of a mile and then descending.

County Government.

Representative—G. W. Wilson.
Clerk Superior Court—T. T. Loftis.
Sheriff and Tax Collector—C. C. Kilpatrick.
Treasurer—Z. W. Nicholls.
Register of Deeds—B. A. Gillespie.
Coroner—Dr. W. J. Wallis.
Surveyor—A. L. Hardin.
Commissioners—W. M. Henry, Ch'n; G. T. Lyday; W. E. Galloway.
Superintendent of Schools—T. C. Henderson.
Physician—Dr. Goode Cheatham.
Attorney—Gash & Galloway.

Town Government.

Mayor—W. E. Brees, jr.
Board of Aldermen—T. H. Shipman, J. M. Kilpatrick, T. M. Mitchell, A. H. King, E. W. Carter.
Marshal—J. A. Galloway.
Clerk and Tax Collector—T. H. Galloway.
Treasurer—T. H. Shipman.
Health Officer—Dr. C. W. Hunt.
Attorney—W. W. Zachary.
Regular meetings—First Monday night in each month.

Professional Cards.

H. G. BAILEY

Civil and Consulting Engineer and Surveyor

McMinn Block BREVARD, N. C.

Patronize those who Advertise

W. B. DUCKWORTH,

ATTORNEY-AT-LAW.

Rooms 1 and 2, Pickelsimer Building.

GASH & GALLOWAY
LAWYERS.

Will practice in all the courts.
Rooms 9 and 10, McMinn Block.

Patronize those who Advertise

E. F. GILLESPIE

CONTRACTING

PAINTER

Estimates furnished and contracts solicited for

Painting in all Branches.

Kalsomining, Floor Stain,
Varnish, etc.

Shop in rear Post Office, BREVARD, N. C.

Patronize those who Advertise

MARK THE GRAVES.

W. L. AIKEN

will furnish to order



MONUMENTS, TOMBSTONES,

Marble, Granite, etc.

Don't place your orders until you see me.

NO REASON FOR DOUBT.

When we offer to return the money paid us if our claims do not prove true, we must know exactly what we are talking about when we say Rexall "93" Hair Tonic will relieve scalp irritation, dandruff and falling hair, and prevent baldness. Don't scoff, doubt or hesitate. Try the remedy at our risk. Two sizes, 50c. and \$1.00.