

READ "THE CITIZEN"
— IF YOU —
WOULD KNOW ASHEVILLE.

Asheville Daily Citizen.

CHRISTMAS COMING!
SECURE YOUR
ADVERTISING SPACE NOW.

VOLUME VII.—NO. 188

ASHEVILLE N. C., SATURDAY EVENING, DECEMBER 12, 1891.

PRICE 5 CENTS.

WHITMAN'S CANDIES
BY EXPRESS
TUESDAYS AND FRIDAYS.
Kroger 41 College St.

FRESH AND DRIED FRUITS.

VIN YARD LUSHER RASINS,
LONDON LAYER RASINS,
SUTTANA SEEDLESS RASINS,
VALICIA OPTIMO K RASINS,
CLEANED CURRANTS, FIGS,
CALLIOMA APPLICOTS, PRUNES,
LONDON CITRON, ORANGE PEBBLE,
FORD TABLES, DRIED APPLES,
FLORIDA ORANGES,
LEMONS, COCO NUTS,
MALAGA GRAPES,
CRANBERRIES, GREEN APPLES.

A. D. COOPER'S,

NORTH COURT SQUARE.

USE DUCK WHEAT FLOUR.

JUST RECEIVED!

The handsome assortment of the new style Ladies' CAPES with shawls and scarves for Christmas, which are made of the finest materials and will be sold at very low prices. Goods are new and fresh.
OPENING OF CHRISTMAS NOVELTIES
THIS WEEK
Large new stock silk and wool material for bonnet-makers, Crocheting and Knitting.
With additional force, we hope to serve our customers promptly.

"BON MARCHÉ,"

37 S. Main Street.

FOR HIGHEST PRICES AND PROMPT RETURNS

SHIP YOUR TOBACCO

TO J. A. REAGAN,

CABELL & PLANTER'S WAREHOUSES,

DANVILLE, VIRGINIA.

JOHN CHILD,

(Formerly of Lyman & Child),
Office No. 1 Legal Block
REAL ESTATE

AND
LOAN BROKER,

TRICTLY A BROKERAGE BUSINESS.
Loans secured placed at 7 per cent.

WILLS BROS.,

ARCHITECTS,

28 Patton Avenue.
Next W. M. C. A. building, P. O. Box 554,
nov 13m

Fulliam & Rutledge,
GENERAL INSURANCE AGENTS,

OVER BANK OF ASHEVILLE.

MODEL CIGAR STORE,

Patton Avenue,

getting ready for Holiday Goods has received a new stock of Merchaunt Pipes, Merchaunt Cigar and Cigarette Holders. A fine assortment of Russian Leather Cigar and Cigarette Cases. A new lot of imported Key West and Domestic Cigars, 25 in a box, with the words printed on them. "Compliments of the Season."

B. H. COSBY,

JEWELER,

PATTON AVENUE.

And Still it Goes.

MEN'S - WINTER - UNDERWEAR

AT ACTUAL COST.

Some while we can fit you; a big stock to select from. Don't miss this great opportunity.

F. E. MITCHELL, 28 Patton Avenue.

ST. MILK NON-P. USED.

He can easily fill this big stock or any other with the best milk we offer for the holidays.



They Do Considerable Work. Among Other Things the Repair of the Special Tax on Coal Dealers—About Christmas.

THAD. W. THRASH & CO.



AN ABUNDANT SUPPLY.

If the merriest of Christmas depends upon what goes on the table—and that has a good deal to do with it—so that the heart can desire is at your disposal.

There will be a flood of orders, but the more the merrier, we are ready for all comers. Give us a call, if it is only for the purpose of seeing how complete and varied is our stock. You will find that we are more than hisified in calling your attention to our large and well-selected assortment of Fine Groceries.

Respectfully,
POWELL & SNIDER

YOU KNOW

Where to find good groceries.

You know where to find just the kind of groceries you want.

BUT DO YOU KNOW

Where to find the kind of service you want? Where your orders will be as carefully attended to as if you saw it done?

We give every order our personal attention. We correct mistakes gladly.

GREER & JOHNSON

TELEPHONE 136.

FALK'S MUSIC HOUSE.

PIANOS:
STEINWAY, EVERETT, HAYWARD.

ORGANS:
WILCOX & WHITE, PARLAND & VOTRY

MANDOLINS, VIOLINS, STRINGS, ETC.

**EASY INSTALLMENTS,
LOWEST PRICES.**

HIGHEST GUARANTEES.
ESTABLISHED SIX YEARS AGO.

I can refer to hundreds of patrons, the best in Western North Carolina. Call on our address.

C. FALK,

35 N. Main Street,
ASHEVILLE, N. C.

OR
Spartanburg, S. C.

THE ALDERMANIC SOLONS.

ASIT WITH THE CITY'S GOVERNORS.

The board of aldermen is still doing business at the old board, and the meeting yesterday afternoon was of more interest than those of the past few weeks.

An Interesting Matter.

Richmond Pearson came before the board in relation to a matter which, he said, was the interest of every citizen of the town. It was about a wall which had been built in front of W. O. Wolfe's building on the southeast corner of court square. The wall is six or eight feet high on Market street and covers considerable space that should be given to the street.

A Water Ordinance.
Mr. Guldger offered an ordinance for the consideration of the board, which, he said, he desired very much to have adopted at some future meeting. The water superintendent has been unable to collect the water rents satisfactorily, and Mr. Guldger's ordinance provides for the payment of these rents on the first day of January, April and October of each year and a penalty for their non-payment. Among other changes in the present water system, this ordinance provides for the charging of a double rate for all water furnished to consumers outside the city.

Mr. Guldger's Pun.

S. M. Redmon stated that he wanted instructions with reference to the widening of S-mey street. He said he had his store on that street propped up on the north side by blocks, held up by four "jacks" in front. Mr. Guldger was all attention at the mention of the "jacks."

Will This Cheaper Coal?

Mr. Brevard made a motion to the effect that coal and wood dealers having paid the special tax, shall be entitled to sell coal at an office up town and at the depot, but that for each additional distributing point they shall pay \$10 extra a year.

About Firecrackers.

The question of allowing the boys to pop firecrackers on Christmas was talked over. Capt. C. M. McLeod said he appeared for Young America, and appealed to the board to allow the boys to enjoy themselves.

Midway, Light, Water.

Col W. D. Justice was up to speak in behalf of a number of residents of North Asheville, on North Main, who asked for a sidewalk, a light and city water. He was informed that they would soon be given a sidewalk and light, but that the water would be some time in getting there.

Some Permits.

Mr. Brevard, for the permit committee, recommended that B. J. Alexander be allowed to construct a barn on one of his lots on Bailey street, provided he puts it on the northern side of the lot farthest from Williams street.

And Some Bills.

The following matters of finance were settled: S. M. Redmon was given the city's note for \$15 for work done for the contractor on East street; the tax on the city's quarry in Henderson county, amounting to \$24.80, was ordered paid; the bill of Geo. F. Scott, for lumber, etc., \$37.36, was ordered paid; Barnett & Howard were given the city's note, payable, Feb. 15, for \$537, for blacksmith.

ANOTHER ART EXHIBIT.

The Art Club Will have one From Dec. 22 to Jan. 5. The first exhibition by the Art club was found to be so successful and in every way advantageous to those interested, that the board of directors have arranged that a second exhibition (under nearly similar conditions as the first) shall take place, beginning December 22 and lasting until January 5.

The Art Club Will have one From Dec. 22 to Jan. 5.

The first exhibition by the Art club was found to be so successful and in every way advantageous to those interested, that the board of directors have arranged that a second exhibition (under nearly similar conditions as the first) shall take place, beginning December 22 and lasting until January 5.

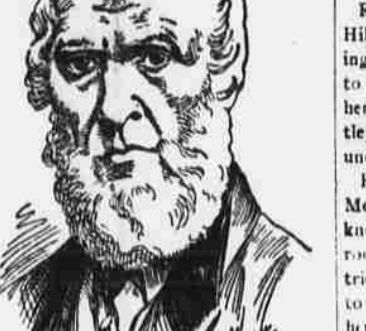
Exhibits should be handed in not later than Saturday, December 19. Original work only (no copies) will be placed on exhibition. Pictures in oils, water colors, black and white panel, etc., by any artists or amateurs—the original work of those living in Asheville being preferred.

It is hoped that every member of the club will contribute something. Any picture may be offered for sale, subject to the conditions laid down in the by-laws of the club.

THE QUAKER POET.

The Venerable Man's 84th Birthday Occurs Next Week.

On the 17th of December, 1891, John G. Whittier will be eighty-four years old.



The event of his birthday will be celebrated by his many friends, eminent and obscure. The poet lives in the utmost retirement in his home at Amesbury, Mass. He and Oliver Wendell Holmes are the latest survivors of the group of eminent American poets that flourished in the first half of the nineteenth century, and included Longfellow, Bryant, Emerson, Poe, Lowell, Halleck, and several others.

LOUISIANA FOR LOTTERY

THE STANDING OF THE STATE CONVENTION.

A Careful Review of the Situation—Some Contented Seats, But the Lottery Seems to be Ahead.
NEW ORLEANS, Dec. 12—Every parish save West Baton Rouge has elected delegates to the democratic state convention. A careful review of the situation shows that the faction favorable to the lottery will be in control.

THE HOUSE IN SESSION.

Crawford of North Carolina Addressed the Convention.
WASHINGTON, Dec. 12—The session of the house today was merely a formal one. The speaker announced the appointment of the following committees: On accounts—Rusk, of Maryland; Cooper, of Indiana; Dickerson, of Kentucky; Moses, of South Carolina; Seelye, of Iowa; Pearson, of Ohio; Quick, of New York; Griswold, of Pennsylvania; Cutting, of California; On a bill to amend an act of Congress, passed July 2, 1891, relating to the duties of the collector of the customs, etc., etc., etc.

BLEW THE HOUSE DOWN.

Destructive Wind Storm in and About Los Angeles.
LOS ANGELES, Cal., Dec. 12—A destructive wind storm visited Los Angeles and vicinity Thursday night and Friday night. Its severity was great at Pasadena in San Gabriel Valley. Two persons were killed.

STINGY BRAZIL.

Regretting the Dead Emperor of French Honors—Resigned.
RIO JANEIRO, Dec. 12—A public meeting was held in this city yesterday at which strong protests were made against the imperial honors paid by France to the late emperor of Brazil on the occasion of his funeral in Paris, Thursday.

HER BOILER EXPLODED.

Twenty-One Persons Drowned From Italian Steamer.
GENOVA, Dec. 12—The Italian steamer Calabria left here this morning for Naples. She had proceeded only a short distance when her boiler exploded, and she sank. There were thirty-three persons on board. Twenty-one were drowned, the other twelve being picked up by boats from other vessels near by.

Bad Blood in Good Families.

DECATUR, Ala., Dec. 12—Tolley Williams, son of Dr. Williams, and Will Wilhoite met at Mrs. Nelson's, where a dispute arose between them. Wilhoite drew his knife and cut Williams. The latter drew his pistol and fired, killing Wilhoite instantly. Both of the men were of good families.

Secretary Foster's Condition.

WASHINGTON, Dec. 12—Secretary Foster is reported better today than at any time since he was taken sick. He will hardly make his contemplated southern trip for several weeks.

Editor Out of a Job.

CONSTANTINOPLE, Dec. 12—The Porte has suppressed the French newspaper, Le Stanboul, for alluding in an offensive manner to Emperor William of Germany.

An Old Mill Burned.

ATTLEBORO, Mass., Dec. 12—The Mechanics mill was nearly destroyed by fire this morning. Loss, \$40,000; insurance partial. The mill was ninety-one years old.

Sterling Silver Novelties
A choice line all new at Law's.

If you want a good photograph and something out of the usual line, go to Bartle, 59 South Main st.

A VERY DEPLORABLE CASE

W. E. GRIMSLEY SHOT A MIN-ISTER FOR KISSING HIS WIFE.

The Latter Rejoins His Pastorate—A Gross Indecent Ion to Say the Least of It—Great Sensation Over the Affair.

Raleigh, N. C., Dec. 10—At Snow Hill, Mr. and Mrs. W. E. Grimsley, living together unhappily, were arranged to separate. Grimsley having deserted her she was going to her parents, Grimsley suspecting his wife, arrested himself under a bed.

Rev. J. T. Abernathy, pastor of the Methodist church there, who is widely known in North Carolina, entered the room with Mrs. Grimsley, and it is said tried to console her. As he was about to leave he kissed her. At this moment her husband came from his hiding place and aiming his gun at the preacher's head pulled the trigger.

TEACHERS' ASSOCIATION.

The County Organization Meets in This City Today.
The meeting of the Buncombe county teachers' association, held in the Orange street graded school building today, was a large and enthusiastic one. Nearly one hundred teachers were present, the large majority of which were ladies.

Rock Quotations.

New York, Dec. 12—Brie 3 3/4, Lake Shore 1 1/4, Chicago and Northwestern 1 1/4, Northern Pacific 1 1/4, Missouri Pacific 1 1/4, Great Northern 1 1/4, Western Union 1 1/4, Baltimore & Annapolis 1 1/4, Chesapeake & Potomac 1 1/4, Chesapeake & Delaware Canal 1 1/4, Chesapeake & Delaware Bay 1 1/4, Chesapeake & Delaware River 1 1/4, Chesapeake & Delaware Sound 1 1/4, Chesapeake & Delaware Strait 1 1/4, Chesapeake & Delaware Trench 1 1/4, Chesapeake & Delaware Narrows 1 1/4, Chesapeake & Delaware Shoals 1 1/4, Chesapeake & Delaware Banks 1 1/4, Chesapeake & Delaware Bars 1 1/4, Chesapeake & Delaware Points 1 1/4, Chesapeake & Delaware Heads 1 1/4, Chesapeake & Delaware Mounds 1 1/4, Chesapeake & Delaware Keys 1 1/4, Chesapeake & Delaware Islets 1 1/4, Chesapeake & Delaware Rocks 1 1/4, Chesapeake & Delaware Shoals 1 1/4, Chesapeake & Delaware Banks 1 1/4, Chesapeake & Delaware Bars 1 1/4, Chesapeake & Delaware Points 1 1/4, Chesapeake & Delaware Heads 1 1/4, Chesapeake & Delaware Mounds 1 1/4, Chesapeake & Delaware Keys 1 1/4, Chesapeake & Delaware Rocks 1 1/4, Chesapeake & Delaware Shoals 1 1/4, Chesapeake & Delaware Banks 1 1/4, Chesapeake & Delaware Bars 1 1/4, Chesapeake & Delaware Points 1 1/4, Chesapeake & Delaware Heads 1 1/4, Chesapeake & Delaware Mounds 1 1/4, Chesapeake & Delaware Keys 1 1/4, Chesapeake & Delaware Rocks 1 1/4, Chesapeake & Delaware Shoals 1 1/4, Chesapeake & Delaware Banks 1 1/4, Chesapeake & Delaware Bars 1 1/4, Chesapeake & Delaware Points 1 1/4, Chesapeake & Delaware Heads 1 1/4, Chesapeake & Delaware Mounds 1 1/4, Chesapeake & Delaware Keys 1 1/4, Chesapeake & Delaware Rocks 1 1/4, Chesapeake & Delaware Shoals 1 1/4, Chesapeake & Delaware Banks 1 1/4, Chesapeake & Delaware Bars 1 1/4, Chesapeake & Delaware Points 1 1/4, Chesapeake & Delaware Heads 1 1/4, Chesapeake & Delaware Mounds 1 1/4, Chesapeake & Delaware Keys 1 1/4, Chesapeake & Delaware Rocks 1 1/4, Chesapeake & Delaware Shoals 1 1/4, Chesapeake & Delaware Banks 1 1/4, Chesapeake & Delaware Bars 1 1/4, Chesapeake & Delaware Points 1 1/4, Chesapeake & Delaware Heads 1 1/4, Chesapeake & Delaware Mounds 1 1/4, Chesapeake & Delaware Keys 1 1/4, Chesapeake & Delaware Rocks 1 1/4, Chesapeake & Delaware Shoals 1 1/4, Chesapeake & Delaware Banks 1 1/4, Chesapeake & Delaware Bars 1 1/4, Chesapeake & Delaware Points 1 1/4, Chesapeake & Delaware Heads 1 1/4, Chesapeake & Delaware Mounds 1 1/4, Chesapeake & Delaware Keys 1 1/4, Chesapeake & Delaware Rocks 1 1/4, Chesapeake & Delaware Shoals 1 1/4, Chesapeake & Delaware Banks 1 1/4, Chesapeake & Delaware Bars 1 1/4, Chesapeake & Delaware Points 1 1/4, Chesapeake & Delaware Heads 1 1/4, Chesapeake & Delaware Mounds 1 1/4, Chesapeake & Delaware Keys 1 1/4, Chesapeake & Delaware Rocks 1 1/4, Chesapeake & Delaware Shoals 1 1/4, Chesapeake & Delaware Banks 1 1/4, Chesapeake & Delaware Bars 1 1/4, Chesapeake & Delaware Points 1 1/4, Chesapeake & Delaware Heads 1 1/4, Chesapeake & Delaware Mounds 1 1/4, Chesapeake & Delaware Keys 1 1/4, Chesapeake & Delaware Rocks 1 1/4, Chesapeake & Delaware Shoals 1 1/4, Chesapeake & Delaware Banks 1 1/4, Chesapeake & Delaware Bars 1 1/4, Chesapeake & Delaware Points 1 1/4, Chesapeake & Delaware Heads 1 1/4, Chesapeake & Delaware Mounds 1 1/4, Chesapeake & Delaware Keys 1 1/4, Chesapeake & Delaware Rocks 1 1/4, Chesapeake & Delaware Shoals 1 1/4, Chesapeake & Delaware Banks 1 1/4, Chesapeake & Delaware Bars 1 1/4, Chesapeake & Delaware Points 1 1/4, Chesapeake & Delaware Heads 1 1/4, Chesapeake & Delaware Mounds 1 1/4, Chesapeake & Delaware Keys 1 1/4, Chesapeake & Delaware Rocks 1 1/4, Chesapeake & Delaware Shoals 1 1/4, Chesapeake & Delaware Banks 1 1/4, Chesapeake & Delaware Bars 1 1/4, Chesapeake & Delaware Points 1 1/4, Chesapeake & Delaware Heads 1 1/4, Chesapeake & Delaware Mounds 1 1/4, Chesapeake & Delaware Keys 1 1/4, Chesapeake & Delaware Rocks 1 1/4, Chesapeake & Delaware Shoals 1 1/4, Chesapeake & Delaware Banks 1 1/4, Chesapeake & Delaware Bars 1 1/4, Chesapeake & Delaware Points 1 1/4, Chesapeake & Delaware Heads 1 1/4, Chesapeake & Delaware Mounds 1 1/4, Chesapeake & Delaware Keys 1 1/4, Chesapeake & Delaware Rocks 1 1/4, Chesapeake & Delaware Shoals 1 1/4, Chesapeake & Delaware Banks 1 1/4, Chesapeake & Delaware Bars 1 1/4, Chesapeake & Delaware Points 1 1/4, Chesapeake & Delaware Heads 1 1/4, Chesapeake & Delaware Mounds 1 1/4, Chesapeake & Delaware Keys 1 1/4, Chesapeake & Delaware Rocks 1 1/4, Chesapeake & Delaware Shoals 1 1/4, Chesapeake & Delaware Banks 1 1/4, Chesapeake & Delaware Bars 1 1/4, Chesapeake & Delaware Points 1 1/4, Chesapeake & Delaware Heads 1 1/4, Chesapeake & Delaware Mounds 1 1/4, Chesapeake & Delaware Keys 1 1/4, Chesapeake & Delaware Rocks 1 1/4, Chesapeake & Delaware Shoals 1 1/4, Chesapeake & Delaware Banks 1 1/4, Chesapeake & Delaware Bars 1 1/4, Chesapeake & Delaware Points 1 1/4, Chesapeake & Delaware Heads 1 1/4, Chesapeake & Delaware Mounds 1 1/4, Chesapeake & Delaware Keys 1 1/4, Chesapeake & Delaware Rocks 1 1/4, Chesapeake & Delaware Shoals 1 1/4, Chesapeake & Delaware Banks 1 1/4, Chesapeake & Delaware Bars 1 1/4, Chesapeake & Delaware Points 1 1/4, Chesapeake & Delaware Heads 1 1/4, Chesapeake & Delaware Mounds 1 1/4, Chesapeake & Delaware Keys 1 1/4, Chesapeake & Delaware Rocks 1 1/4, Chesapeake & Delaware Shoals 1 1/4, Chesapeake & Delaware Banks 1 1/4, Chesapeake & Delaware Bars 1 1/4, Chesapeake & Delaware Points 1 1/4, Chesapeake & Delaware Heads 1 1/4, Chesapeake & Delaware Mounds 1 1/4, Chesapeake & Delaware Keys 1 1/4, Chesapeake & Delaware Rocks 1 1/4, Chesapeake & Delaware Shoals 1 1/4, Chesapeake & Delaware Banks 1 1/4, Chesapeake & Delaware Bars 1 1/4, Chesapeake & Delaware Points 1 1/4, Chesapeake & Delaware Heads 1 1/4, Chesapeake & Delaware Mounds 1 1/4, Chesapeake & Delaware Keys 1 1/4, Chesapeake & Delaware Rocks 1 1/4, Chesapeake & Delaware Shoals 1 1/4, Chesapeake & Delaware Banks 1 1/4, Chesapeake & Delaware Bars 1 1/4, Chesapeake & Delaware Points 1 1/4, Chesapeake & Delaware Heads 1 1/4, Chesapeake & Delaware Mounds 1 1/4, Chesapeake & Delaware Keys 1 1/4, Chesapeake & Delaware Rocks 1 1/4, Chesapeake & Delaware Shoals 1 1/4, Chesapeake & Delaware Banks 1 1/4, Chesapeake & Delaware Bars 1 1/4, Chesapeake & Delaware Points 1 1/4, Chesapeake & Delaware Heads 1 1/4, Chesapeake & Delaware Mounds 1 1/4, Chesapeake & Delaware Keys 1 1/4, Chesapeake & Delaware Rocks 1 1/4, Chesapeake & Delaware Shoals 1 1/4, Chesapeake & Delaware Banks 1 1/4, Chesapeake & Delaware Bars 1 1/4, Chesapeake & Delaware Points 1 1/4, Chesapeake & Delaware Heads 1 1/4, Chesapeake & Delaware Mounds 1 1/4, Chesapeake & Delaware Keys 1 1/4, Chesapeake & Delaware Rocks 1 1/4, Chesapeake & Delaware Shoals 1 1/4, Chesapeake & Delaware Banks 1 1/4, Chesapeake & Delaware Bars 1 1/4, Chesapeake & Delaware Points 1 1/4, Chesapeake & Delaware Heads 1 1/4, Chesapeake & Delaware Mounds 1 1/4, Chesapeake & Delaware Keys 1 1/4, Chesapeake & Delaware Rocks 1 1/4, Chesapeake & Delaware Shoals 1 1/4, Chesapeake & Delaware Banks 1 1/4, Chesapeake & Delaware Bars 1 1/4, Chesapeake & Delaware Points 1 1/4, Chesapeake & Delaware Heads 1 1/4, Chesapeake & Delaware Mounds 1 1/4, Chesapeake & Delaware Keys 1 1/4, Chesapeake & Delaware Rocks 1 1/4, Chesapeake & Delaware Shoals 1 1/4, Chesapeake & Delaware Banks 1 1/4, Chesapeake & Delaware Bars 1 1/4, Chesapeake & Delaware Points 1 1/4, Chesapeake & Delaware Heads 1 1/4, Chesapeake & Delaware Mounds 1 1/4, Chesapeake & Delaware Keys 1 1/4, Chesapeake & Delaware Rocks 1 1/4, Chesapeake & Delaware Shoals 1 1/4, Chesapeake & Delaware Banks 1 1/4, Chesapeake & Delaware Bars 1 1/4, Chesapeake & Delaware Points 1 1/4, Chesapeake & Delaware Heads 1 1/4, Chesapeake & Delaware Mounds 1 1/4, Chesapeake & Delaware Keys 1 1/4, Chesapeake & Delaware Rocks 1 1/4, Chesapeake & Delaware Shoals 1 1/4, Chesapeake & Delaware Banks 1 1/4, Chesapeake & Delaware Bars 1 1/4, Chesapeake & Delaware Points 1 1/4, Chesapeake & Delaware Heads 1 1/4, Chesapeake & Delaware Mounds 1 1/4, Chesapeake & Delaware Keys 1 1/4, Chesapeake & Delaware Rocks 1 1/4, Chesapeake & Delaware Shoals 1 1/4, Chesapeake & Delaware Banks 1 1/4, Chesapeake & Delaware Bars 1 1/4, Chesapeake & Delaware Points 1 1/4, Chesapeake & Delaware Heads 1 1/4, Chesapeake & Delaware Mounds 1 1/4, Chesapeake & Delaware Keys 1 1/4, Chesapeake & Delaware Rocks 1 1/4, Chesapeake & Delaware Shoals 1 1/4, Chesapeake & Delaware Banks 1 1/4, Chesapeake & Delaware Bars 1 1/4, Chesapeake & Delaware Points 1 1/4, Chesapeake & Delaware Heads 1 1/4, Chesapeake & Delaware Mounds 1 1/4, Chesapeake & Delaware Keys 1 1/4, Chesapeake & Delaware Rocks 1 1/4, Chesapeake & Delaware Shoals 1 1/4, Chesapeake & Delaware Banks 1 1/4, Chesapeake & Delaware Bars 1 1/4, Chesapeake & Delaware Points 1 1/4, Chesapeake & Delaware Heads 1 1/4, Chesapeake & Delaware Mounds 1 1/4, Chesapeake & Delaware Keys 1 1/4, Chesapeake & Delaware Rocks 1 1/4, Chesapeake & Delaware Shoals 1 1/4, Chesapeake & Delaware Banks 1 1/4, Chesapeake & Delaware Bars 1 1/4, Chesapeake & Delaware Points 1 1/4, Chesapeake & Delaware Heads 1 1/4, Chesapeake & Delaware Mounds 1 1/4, Chesapeake & Delaware Keys 1 1/4, Chesapeake & Delaware Rocks 1 1/4, Chesapeake & Delaware Shoals 1 1/4, Chesapeake & Delaware Banks 1 1/4, Chesapeake & Delaware Bars 1 1/4, Chesapeake & Delaware Points 1 1/4, Chesapeake & Delaware Heads 1 1/4, Chesapeake & Delaware Mounds 1 1/4, Chesapeake & Delaware Keys 1 1/4, Chesapeake & Delaware Rocks 1 1/4, Chesapeake & Delaware Shoals 1 1/4, Chesapeake & Delaware Banks 1 1/4, Chesapeake & Delaware Bars 1 1/4, Chesapeake & Delaware Points 1 1/4, Chesapeake & Delaware Heads 1 1/4, Chesapeake & Delaware Mounds 1 1/4, Chesapeake & Delaware Keys 1 1/4, Chesapeake & Delaware Rocks 1 1/4, Chesapeake & Delaware Shoals 1 1/4, Chesapeake & Delaware Banks 1 1/4, Chesapeake & Delaware Bars 1 1/4, Chesapeake & Delaware Points 1 1/4, Chesapeake & Delaware Heads 1 1/4, Chesapeake & Delaware Mounds 1 1/4, Chesapeake & Delaware Keys 1 1/4, Chesapeake & Delaware Rocks 1 1/4, Chesapeake & Delaware Shoals 1 1/4, Chesapeake & Delaware Banks 1 1/4, Chesapeake & Delaware Bars 1 1/4, Chesapeake & Delaware Points 1 1/4, Chesapeake & Delaware Heads 1 1/4, Chesapeake & Delaware Mounds 1 1/4, Chesapeake & Delaware Keys 1 1/4, Chesapeake & Delaware Rocks 1 1/4, Chesapeake & Delaware Shoals 1 1/4, Chesapeake & Delaware Banks 1 1/4, Chesapeake & Delaware Bars 1 1/4, Chesapeake & Delaware Points 1 1/4, Chesapeake & Delaware Heads 1 1/4, Chesapeake & Delaware Mounds 1 1/4, Chesapeake & Delaware Keys 1 1/4, Chesapeake & Delaware Rocks 1 1/4, Chesapeake & Delaware Shoals 1 1/4, Chesapeake & Delaware Banks 1 1/4, Chesapeake & Delaware Bars 1 1/4, Chesapeake & Delaware Points 1 1/4, Chesapeake & Delaware Heads 1 1/4, Chesapeake & Delaware Mounds 1 1/4, Chesapeake & Delaware Keys 1 1/4, Chesapeake & Delaware Rocks 1 1/4, Chesapeake & Delaware Shoals 1 1/4, Chesapeake & Delaware Banks 1 1/4, Chesapeake & Delaware Bars 1 1/4, Chesapeake & Delaware Points 1 1/4, Chesapeake & Delaware Heads 1 1/4, Chesapeake & Delaware Mounds 1 1/4, Chesapeake & Delaware Keys 1 1/4, Chesapeake & Delaware Rocks 1 1/4, Chesapeake & Delaware Shoals 1 1/4, Chesapeake & Delaware Banks 1 1/4, Chesapeake & Delaware Bars 1 1/4, Chesapeake & Delaware Points 1 1/4, Chesapeake & Delaware Heads 1 1/4, Chesapeake & Delaware Mounds 1 1/4, Chesapeake & Delaware Keys 1 1/4, Chesapeake & Delaware Rocks 1 1/4, Chesapeake & Delaware Shoals 1 1/4, Chesapeake & Delaware Banks 1 1/4, Chesapeake & Delaware Bars 1 1/4, Chesapeake & Delaware Points 1 1/4, Chesapeake & Delaware Heads 1 1/4, Chesapeake & Delaware Mounds 1 1