

BP

With local industries starting up once more to old-time production capacity, the opportunity of the reliable banking institution as an ally increases. The Battery Park Bank is ready to render fullest co-operation in this form of service.

The BATTERY PARK BANK

Capital \$1,000,000 Member Federal Reserve System Surplus & Profits \$255,000

AUTOMOBILE OWNERS

Protect Your Radiators Before They Are Damaged by Freezing

Denatured Alcohol

is generally recognized as the best anti-freeze, as it has the least possible deteriorating effect on the radiator and other parts.

DO IT TODAY—WE HAVE IT
Sawyer Motor Co.

15-17 S. Lexington Ave.

NEW YORK STOCK LIST.

Symbol	High	Low	Close
Amer. Beet Sugar	19 1/2	19 1/4	19 1/4
Amer. Can	28 1/2	28 1/4	28 1/4
Amer. C. and P. Ry.	28 1/2	28 1/4	28 1/4
Amer. Locomotive	28 1/2	28 1/4	28 1/4
Amer. Lined	28 1/2	28 1/4	28 1/4
Amer. S. and R.	28 1/2	28 1/4	28 1/4
American Sugar	28 1/2	28 1/4	28 1/4
American Tel. and Tel.	28 1/2	28 1/4	28 1/4
American Tobacco	28 1/2	28 1/4	28 1/4
Anaconda Copper	28 1/2	28 1/4	28 1/4
Atlantic Coast Line	28 1/2	28 1/4	28 1/4
A. G. and W. Indus.	28 1/2	28 1/4	28 1/4
B. Locomotive	28 1/2	28 1/4	28 1/4
B. and O.	28 1/2	28 1/4	28 1/4
Beth Steel	28 1/2	28 1/4	28 1/4
Canadian P. Ex. Div.	28 1/2	28 1/4	28 1/4
Chesapeake and O.	28 1/2	28 1/4	28 1/4
Chl. M. and St. Paul	28 1/2	28 1/4	28 1/4
Chl. R. and Pac.	28 1/2	28 1/4	28 1/4
Chino Copper	28 1/2	28 1/4	28 1/4
Colo. F. and Iron	28 1/2	28 1/4	28 1/4
Corn Products	28 1/2	28 1/4	28 1/4
Credible Steel	28 1/2	28 1/4	28 1/4
Cuba Cane Sugar	28 1/2	28 1/4	28 1/4
Gen. Elec.	28 1/2	28 1/4	28 1/4
General Motors	28 1/2	28 1/4	28 1/4
Great Nor. Pfd.	28 1/2	28 1/4	28 1/4
Gulf States	28 1/2	28 1/4	28 1/4
Ill. Central	28 1/2	28 1/4	28 1/4
Inspiration Copper	28 1/2	28 1/4	28 1/4
Int. M. Marine Pfd.	28 1/2	28 1/4	28 1/4
International Paper	28 1/2	28 1/4	28 1/4
Kennecott Copper	28 1/2	28 1/4	28 1/4
L. and N.	28 1/2	28 1/4	28 1/4
Maxwell Motors	28 1/2	28 1/4	28 1/4
Met. Petroleum	28 1/2	28 1/4	28 1/4
Miami Copper	28 1/2	28 1/4	28 1/4
Midvale Steel	28 1/2	28 1/4	28 1/4
Missouri Pacific	28 1/2	28 1/4	28 1/4
New York Central	28 1/2	28 1/4	28 1/4
N. and W. Ex. Div.	28 1/2	28 1/4	28 1/4
Northern Pac.	28 1/2	28 1/4	28 1/4
Ohio Gas	28 1/2	28 1/4	28 1/4
Pennsylvania	28 1/2	28 1/4	28 1/4
Pittsburg Coal	28 1/2	28 1/4	28 1/4
Ray Con. Copper	28 1/2	28 1/4	28 1/4
Reading	28 1/2	28 1/4	28 1/4
Rep. Iron and Steel	28 1/2	28 1/4	28 1/4
Seaboard A. L.	28 1/2	28 1/4	28 1/4
Seaboard A. L. Pfd.	28 1/2	28 1/4	28 1/4
St. Paul	28 1/2	28 1/4	28 1/4
St. Paul Pfd.	28 1/2	28 1/4	28 1/4
Southern Ry. Pfd.	28 1/2	28 1/4	28 1/4
Studebaker Cor.	28 1/2	28 1/4	28 1/4
Tennessee Copper	28 1/2	28 1/4	28 1/4
Texas Co.	28 1/2	28 1/4	28 1/4
Tobacco Products	28 1/2	28 1/4	28 1/4
Union Pacific	28 1/2	28 1/4	28 1/4
United Cigar Stores	28 1/2	28 1/4	28 1/4
United Fruit	28 1/2	28 1/4	28 1/4
U. S. Ind. Alcohol	28 1/2	28 1/4	28 1/4
U. S. Steel	28 1/2	28 1/4	28 1/4
U. S. Steel Pfd.	28 1/2	28 1/4	28 1/4
U. S. Steel Ex. Div.	28 1/2	28 1/4	28 1/4
U. S. Steel Pfd. A	28 1/2	28 1/4	28 1/4
U. S. Steel Pfd. B	28 1/2	28 1/4	28 1/4
U. S. Steel Pfd. C	28 1/2	28 1/4	28 1/4
U. S. Steel Pfd. D	28 1/2	28 1/4	28 1/4
U. S. Steel Pfd. E	28 1/2	28 1/4	28 1/4
U. S. Steel Pfd. F	28 1/2	28 1/4	28 1/4
U. S. Steel Pfd. G	28 1/2	28 1/4	28 1/4
U. S. Steel Pfd. H	28 1/2	28 1/4	28 1/4
U. S. Steel Pfd. I	28 1/2	28 1/4	28 1/4
U. S. Steel Pfd. J	28 1/2	28 1/4	28 1/4
U. S. Steel Pfd. K	28 1/2	28 1/4	28 1/4
U. S. Steel Pfd. L	28 1/2	28 1/4	28 1/4
U. S. Steel Pfd. M	28 1/2	28 1/4	28 1/4
U. S. Steel Pfd. N	28 1/2	28 1/4	28 1/4
U. S. Steel Pfd. O	28 1/2	28 1/4	28 1/4
U. S. Steel Pfd. P	28 1/2	28 1/4	28 1/4
U. S. Steel Pfd. Q	28 1/2	28 1/4	28 1/4
U. S. Steel Pfd. R	28 1/2	28 1/4	28 1/4
U. S. Steel Pfd. S	28 1/2	28 1/4	28 1/4
U. S. Steel Pfd. T	28 1/2	28 1/4	28 1/4
U. S. Steel Pfd. U	28 1/2	28 1/4	28 1/4
U. S. Steel Pfd. V	28 1/2	28 1/4	28 1/4
U. S. Steel Pfd. W	28 1/2	28 1/4	28 1/4
U. S. Steel Pfd. X	28 1/2	28 1/4	28 1/4
U. S. Steel Pfd. Y	28 1/2	28 1/4	28 1/4
U. S. Steel Pfd. Z	28 1/2	28 1/4	28 1/4
Wabash Pfd. A	28 1/2	28 1/4	28 1/4
Wabash Pfd. B	28 1/2	28 1/4	28 1/4
Westinghouse Elct.	28 1/2	28 1/4	28 1/4
Willys-Overland	28 1/2	28 1/4	28 1/4
Total sales, 664,400.			

CHICAGO MARKETS.

CHICAGO, Nov. 29.—Broad humanitarianism, reported as the probable cause of food shortage relief in Europe had much to do today with stimulating bullish sentiment in the corn market. Prices closed stronger, 1 to 1/2% net higher with December 1.27 1/2 to 1.28 and January 1.28 1/2 to 1.29. Oats gained 1/4 to 1/2. In provisions, the outcome ranged from 5 cents decline to 1/2 advance.

Commodity	Price
November	28.00
January	28.70
December	1.27 1/2
January	1.28 1/2
December	72 1/2
January	72 1/2
November	45.75
January	46.45
November	28.75
January	29.05

Corn No. 2 yellow nominal; No. 3 yellow 1.42@1.44; No. yellow, new 1.39@1.41. Hogs market mostly 25c to 50c lower than Wednesday's general list; few sales late above \$17.75; early top 18; butchers 18.75@17.40; throwouts 16.00@16.00; pigs, choice 15.50@15.50. Cattle: Choice beef steers with fair weight steady; others, butcher and canning cattle unevenly slow to 25c lower; calves steady; stockers and feeders steady. Beef cattle, choice 15.00@15.75; medium 9.00@15.00; butcher stock, cows and heifers 16.00@12.00; canners and cutters 17.00@17.50; stock, choice 17.00@17.50. Western range beef steers 14.00@18.00; cows and heifers 8.00@11.50. Sheep: Lambs steady to 15c lower; sheep steady. Lambs, choice 15.00@15.25; medium 14.00@15.00; Culls 8.50@12.25; Ewes, choice 1.00@5.50; medium 8.00@8.50; culls 2.25@5.50.

LAND SALE.

By virtue of the power of sale contained in a deed of trust, executed on the 11th day of September, 1916, by Thomas Williams and wife, Matilda Williams, to W. D. Tracey, Trustee, to secure the indebtedness therein described to Mary Duffield Hilliard, which said deed of trust is duly recorded in the office of the Register of Deeds for Buncombe County, North Carolina, in Book of Deeds of Trust No. 111, page 99, and default having been made in the payment of both principal and interest on the note secured by said deed of trust, and upon application and demand of the holder of said note, the undersigned trustee, will, on Saturday the 21st day of December, 1918, at 12 o'clock noon, offer for sale at the Court House Door in the City of Asheville, said County and State, to the highest bidder, for cash, the following piece, parcel or lot of land, situate, lying and being in E. W. Grove Park, in the City of Asheville, County of Buncombe and State of North Carolina, being Lot No. 7 of Block B, of a Plat of E. W. Grove Park, West of Charlotte street, recorded in the office of the Register of Deeds for Buncombe County, North Carolina, in Book 154, at page 171, and bounded and more particularly described as follows: BEGINNING at a stake in the Western margin of Lawrence Place, at the

NEW YORK PRODUCE.

NEW YORK, Nov. 29.—Raw sugar quiet; centrifugal 7.25; fine granulated unquoted. Spot coffee nominally unchanged. Butter firm; cheese firm. Inside a Paris sewer is a small but useful electric railway.

MARKET NEWS

NEW YORK MARKET SHOWS STRENGTH

NEW YORK, Nov. 29.—Modification of the restrictions recently placed on brokers' loans and margins followed by an aggressive demand for high grade transportation, Pacific again featuring that group. Extreme advances in that division ranged from 3 to 6 1/2 points, granars and hoists following at gains of 1 to 1 1/2 points. United States Steel, selling ex-dividend at 34 points also manifested reactionary tendencies during the morning, but recovered all of its 1/4 point loss, closing at a gain of almost 1 point. Independent steel, equipment, motors and oils were 1 to 1/2 points down during the forenoon and recovered forward within an hour in every noteworthy instance, ending at a substantial advance. Mexican Petroleum was the chief feature of the speculative market, reversing its setback of 1/4 point with a gain of 1/4 point. Among the various specialties, United States Rubber, sugars, and leathers scored substantial gains, but distilling shares and tobacco participated only moderately in the brisk rebound of the final hour. Railway bonds derived some strength from the inquiry for stocks of that class but the general list was irregular. Liberty issues again weakening with the fourth 4 1/2's at the new low of 94 1/2. Total sales, per value, aggregated \$10,775,000. Old U. S. bonds unchanged.

NEW YORK CATTLE.

NEW YORK, Nov. 29.—Beeves firm. Steers 8.50@15.75; bulls 6.00@10.00; cows 6.00@11.50. Calves irregular; veals 15.00@21.00; culls 11.00@13.00; grassers 6.50@7.75; westerns 8.00@12.00. Sheep and lambs irregular; sheep 6.50@16.00; culls 5.00@8.00; lambs 13.50@17.75; culls 4.00@12.50. Hogs steady at 18.25; roughs 16.25.

NEW YORK DRY GOODS.

NEW YORK, Nov. 29.—Cotton goods and yarns were quiet today with an easing tendency. Futures were weak with offerings firm. Wool goods were quiet, silks very quiet.

NEW ORLEANS COTTON.

NEW ORLEANS, Nov. 29.—Aside from a momentary advance of 3 to 12 points around the opening, it was a session of weakness in the cotton market today. The initial rise was quickly replaced by a net decline which was gradually but constantly widened until the very close, which was at the lowest of the day, when it amounted to 118 to 123 points. The market officially was toned weak on the close. According to floor comment the market felt some hedge selling in the early part of the day, continued to slide off under dullness and finally felt much liquidation as the result of the poor showing made by mill takings of American cotton for this week which according to Hester, were only 229,000 bales against 45,000 this week last year and 428,000 this week two years ago. The small advance on the opening was partly due to unfavorable weather accounts from the belt, and to claims of a better spot demand in some sections. Locally the spot department showed no activity and prices were reduced 50 points which carried liquidation down to 23.25. At the lowest levels January traded at 25.60.

NEW ORLEANS COTTON.

NEW ORLEANS, Nov. 29.—Aside from a momentary advance of 3 to 12 points around the opening, it was a session of weakness in the cotton market today. The initial rise was quickly replaced by a net decline which was gradually but constantly widened until the very close, which was at the lowest of the day, when it amounted to 118 to 123 points. The market officially was toned weak on the close.

NEW ORLEANS COTTON.

NEW ORLEANS, Nov. 29.—Aside from a momentary advance of 3 to 12 points around the opening, it was a session of weakness in the cotton market today. The initial rise was quickly replaced by a net decline which was gradually but constantly widened until the very close, which was at the lowest of the day, when it amounted to 118 to 123 points. The market officially was toned weak on the close.

NEW ORLEANS COTTON.

NEW ORLEANS, Nov. 29.—Aside from a momentary advance of 3 to 12 points around the opening, it was a session of weakness in the cotton market today. The initial rise was quickly replaced by a net decline which was gradually but constantly widened until the very close, which was at the lowest of the day, when it amounted to 118 to 123 points. The market officially was toned weak on the close.

NEW ORLEANS COTTON.

NEW ORLEANS, Nov. 29.—Aside from a momentary advance of 3 to 12 points around the opening, it was a session of weakness in the cotton market today. The initial rise was quickly replaced by a net decline which was gradually but constantly widened until the very close, which was at the lowest of the day, when it amounted to 118 to 123 points. The market officially was toned weak on the close.

NEW ORLEANS COTTON.

NEW ORLEANS, Nov. 29.—Aside from a momentary advance of 3 to 12 points around the opening, it was a session of weakness in the cotton market today. The initial rise was quickly replaced by a net decline which was gradually but constantly widened until the very close, which was at the lowest of the day, when it amounted to 118 to 123 points. The market officially was toned weak on the close.

NEW ORLEANS COTTON.

NEW ORLEANS, Nov. 29.—Aside from a momentary advance of 3 to 12 points around the opening, it was a session of weakness in the cotton market today. The initial rise was quickly replaced by a net decline which was gradually but constantly widened until the very close, which was at the lowest of the day, when it amounted to 118 to 123 points. The market officially was toned weak on the close.

NEW ORLEANS COTTON.

NEW ORLEANS, Nov. 29.—Aside from a momentary advance of 3 to 12 points around the opening, it was a session of weakness in the cotton market today. The initial rise was quickly replaced by a net decline which was gradually but constantly widened until the very close, which was at the lowest of the day, when it amounted to 118 to 123 points. The market officially was toned weak on the close.

NEW ORLEANS COTTON.

NEW ORLEANS, Nov. 29.—Aside from a momentary advance of 3 to 12 points around the opening, it was a session of weakness in the cotton market today. The initial rise was quickly replaced by a net decline which was gradually but constantly widened until the very close, which was at the lowest of the day, when it amounted to 118 to 123 points. The market officially was toned weak on the close.

NEW ORLEANS COTTON.

NEW ORLEANS, Nov. 29.—Aside from a momentary advance of 3 to 12 points around the opening, it was a session of weakness in the cotton market today. The initial rise was quickly replaced by a net decline which was gradually but constantly widened until the very close, which was at the lowest of the day, when it amounted to 118 to 123 points. The market officially was toned weak on the close.

Shall America Stint Herself To Feed Germany?

An examination of the American press shows that the German wail for food, which was the first sign of life of the new-born German Government, has not aroused any large amount of compassion over here. To many observers this "propaganda" is important as the opening gun of Germany's fight for a victory at the peace table. All our late full-Germans, pro-Germans, and pacifists are expected to come out of hiding forthwith and "show mercy to the defeated." "They will come," predicts the Kansas City Star, "bearing bouquets, asking permission to offer consolation to the prisoner and to leave tracts and flowers in the cell. . . . Heaven spare us now from mush." On the other hand, Mr. Herbert C. Hoover, the Food Administrator, says "there has been a great deal of unnecessary furor in this country about feeding the Germans. We are not calling upon the American people to make any sacrifice with a view to feeding the Germans. Remove the water-tight blockade and the Germans will take care of themselves."

The leading article in THE LITERARY DIGEST this week—November 30th—takes up the latest phase of the peace negotiations and by presenting the sentiments of editors of all political persuasions gives the reader a concrete idea of how America feels upon the subject of feeding Germany this winter.

Other articles that will be of great interest to the American people upon subjects that concern them intimately, are:

How the War Was Won

The Contributing Causes of Germany's Defeat as Adduced by Authorities in America, England, France, and Germany

- Wilhelm to the Bar of Justice
- The Coming British Elections
- The Swiss Center of Bolshevism
- The World's Strongest Fiber
- Curing Madness by Tooth-Pulling
- Praise for American Poets
- Cold Water for French Good Will
- A Call to Repentance
- Meeing the Test
- (Prepared by U. S. Food Administration)
- News of Business and Finance
- Many Illustrations, Including Maps, Half-tone Portraits and Cartoons

- The President at the Peace Table
- Germany Playing "The Baby Act"
- How Aviation Has Done the Impossible
- How Influenza Got In
- New York's First Statue to an Actor
- Tolstoy Still Dreaming
- Foch—"The Gray Man of Christ"
- "The Great Army that Died"
- The Best of Current Poetry
- Personal Glimpses of Men and Events

Full-Page Colored Map in "The Digest" This Week

This instructive Map will be eagerly welcomed by the readers of "The Digest," for on it they can easily trace the progress of the great Allied army of occupation in its triumphal march toward the Rhine. The map also shows the German territory to be occupied by the American and Allied armies under the terms of the armistice. The "bridge-heads" along the line are

clearly indicated, with the neutral zone shown in color; also the battle line as it stood when hostilities ceased at the eleventh hour on the eleventh day of the eleventh month of the year. Briefly, the entire region that will be most prominent in the news for a long time to come will be available for ready reference through this map. It is worthy of permanent preservation.

November 30th Number on Sale To-day—All News-dealers—10 Cents

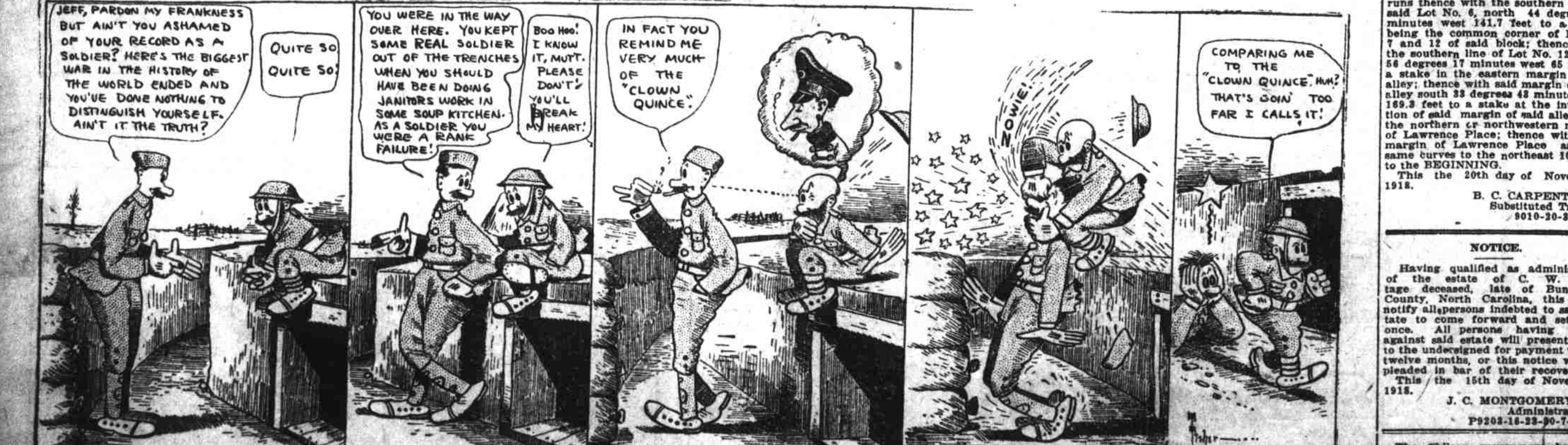
The **Literary Digest**

SAVE W.S.S. SERVE

FUNK & WAGNALL COMPANY (Publishers of the Famous New Standard Dictionary), NEW YORK

MUTT AND JEFF—We Figure That Mutt Got Off Easy at That.

(Copyright, 1918, by H. C. Fisher. Trade Mark Reg. U. S. Pat. Off.)



By H. C. FISHER

NOTICE OF SALE BY SUBSTITUTED TRUSTEE.

WHEREAS, On the 11th day of September, 1916, Thomas Williams and wife, Matilda Williams, executed and delivered a deed of trust conveying real estate therein described to Ruffner Campbell, trustee, to secure the indebtedness therein described to Paul H. Gearhart; and WHEREAS, in said deed of trust it is agreed, among other things, that upon the refusal, neglect or incompetency to act of said trustee, or in his absence from the state, that the said party of the third part, or any holder or holders of said notes, may appoint and substitute another trustee, whose acts done in the premises shall be as binding to all intents and purposes as if the original trustee had acted; and WHEREAS The said Ruffner Campbell, trustee, has departed from the state, and is now in the United States navy; and WHEREAS The holders of said notes have, by an instrument of writing, duly recorded in the office of the register of deeds for Buncombe county, North Carolina, appointed the undersigned as trustee to act in the

place and stead of the said Ruffner Campbell, trustee; now

THEREFORE, by virtue of the power of sale and the said substitution of trustee, contained in said deed of trust, executed on the 11th day of September, 1916, by Thomas Williams and wife, Matilda Williams, to Ruffner Campbell, trustee, to secure the indebtedness therein described to Paul H. Gearhart, which said deed of trust is duly recorded in the office of the register of deeds for Buncombe county, North Carolina, in Book of Deeds of Trust No. 111, page 99, and default having been made in the payment of both principal and interest on the notes secured by said deed of trust, and upon application and demand of the holder of said notes, the undersigned trustee will, on Saturday the 21st day of December, 1918, at 12 o'clock noon, offer for sale at the Court House door in the City of Asheville, said County and State, to the highest bidder, for cash, the following piece, parcel or lot of land, situate, lying and being in E. W. Grove Park, in the City of Asheville, County of Buncombe and State of North Carolina, being Lot No. 7 of Block B, of a Plat of E. W. Grove Park, West of Charlotte street, recorded in the office of the register of deeds for Buncombe county, North Carolina, in Book 154, at page 171, and bounded and more particularly described as follows: BEGINNING at a stake in the western margin of Lawrence Place, at the southeast or extreme southern corner of Lot No. 6, of said Block, and runs thence with the southern line of said Lot No. 6, north 44 degrees 57 minutes west 141.7 feet to a stake, being the common corner of Lots 6, 7 and 12 of said Block; thence with the southern line of Lot No. 6, north 56 degrees 17 minutes west 65 feet to a stake in the eastern margin of said alley; thence with said margin of said alley south 33 degrees 42 minutes east 169.3 feet to a stake at the intersection of said margin of said alley with the northern or northwestern margin of Lawrence Place; thence with said margin of Lawrence Place, thence with said margin of Lawrence Place to the BEGINNING.

This the 20th day of November, 1918.

B. C. CARPENTER, Substituted Trustee.

9010-20-30-7-14

NOTICE.

Having qualified as administrator of the estate of C. W. Heritage deceased, late of Buncombe County, North Carolina, this is to notify all persons indebted to said estate to come forward and settle at once. All persons having claims against said estate will present them to the undersigned for payment within twelve months, or the notice will be pleaded in bar of their recovery. This the 15th day of November, 1918.

J. C.