

**Edwin Clapp**  
Shoes for men

**J. & T. Cousins**  
Shoes for women

**FOR JUST 3 MORE DAYS**

**All Women's Low Shoes Less 20%**

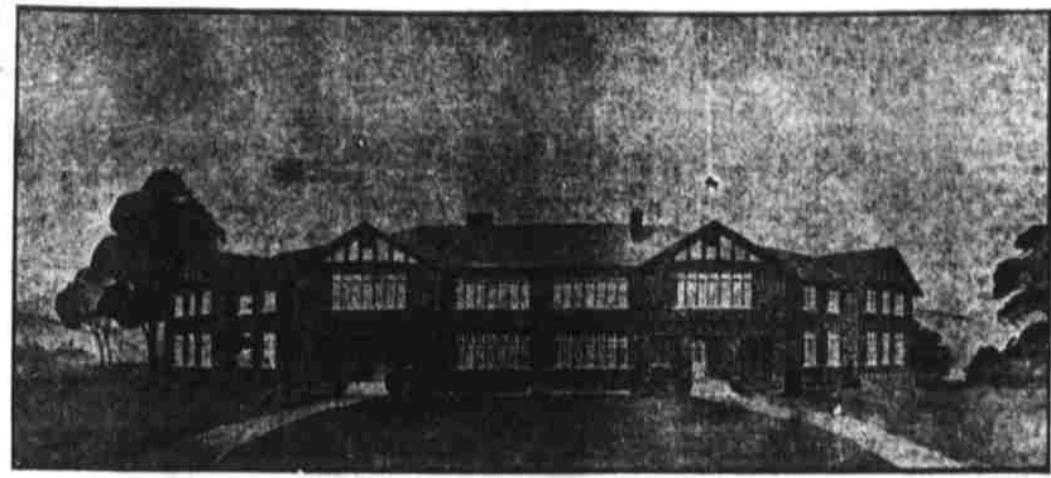
OUR 20% Reduction Sale of Women's Oxfords, Pumps and Slippers, will close Saturday at 9 P. M. Delay means regret. Come choose from our regular stocks including fine Cousins and Clapp Shoes, at the following actual savings.

All \$ 6.00 Shoes.....\$ 4.80  
All \$ 7.50 Shoes.....\$ 6.00  
All \$ 8.50 Shoes.....\$ 6.80  
All \$10.00 Shoes.....\$ 8.00  
All \$11.00 Shoes.....\$ 8.80  
All \$12.50 Shoes.....\$10.00

**TERMS CASH**

**Clements & Chambers**  
Leaders in Footwear  
47 Patton Avenue

**GROWTH OF MOUNTAIN ORPHANAGE SHOWN IN PICTURES; CARES FOR THE LITTLE ONES WHO ARE TERMED THE "LEFT OVERS"**



MOUNTAIN ORPHANAGE, 1922.

From a small four-room frame cottage to a modern fireproof structure capable of caring for more than 50 orphans, is the story still in the making of the Mountain Orphanage.

A glance at the contrasting pictures will show how great the step that is being taken with the present construction of the attractive new home at Swannanoa.

Dating back to 1904, the Orphanage, at present housed at Balfour, near Hendersonville, has experienced a steady development



MOUNTAIN ORPHANAGE, 1904.

**We Offer Every Banking Service**

Commercial — Checking — Certificates of Deposit — Savings — Foreign Exchange — Investments and Safe Deposit Boxes.

**THE NATIONAL BANK OF COMMERCE**  
ELEVEN CHURCH STREET  
Quarterly Interest  
4% On Savings

either fraternal or denominational. It opened with six homeless children. Soon, however, there were others seeking the shelter of the cottage roof, until the place was crowded far beyond comfort and safety, and still scores clamored for admittance.

Later a group of friends made it possible to enlarge the work through the removal to Balfour. Larger and better buildings were provided and more land for cultivation.

Here the Orphanage has been doing splendid work for the past 15 years, those familiar with the

homeless mountain children in this manner, drawing no lines of creed or denomination.

The new building, now being constructed upon the former Sluder property near the State Test Farm, is located not far from Black Mountain upon the Old Hickory Highway about 14 miles from Asheville. The farm contains 125 acres of tillable land, and has an excellent water supply, all things being conducive to health and happiness amid ideal surroundings. The proximity to the several religious assemblies of the region, and the great asset, modern equipment for the best of manual and literary training will be placed at the disposal of the children when the new quarters are completed.

At the rate work is now being pressed, the new structure will soon be enclosed so that construction can go forward even if disagreeable weather should be encountered.

**BOLL WEEVIL FINDS ITS WAY TO GUILFORD COUNTY**

Special Correspondence THE ASHEVILLE CITIZEN  
GUILFORD, Nov. 15.—The most northerly march of the cotton boll weevil was recorded today, with the finding of several of the pests on the cotton farm of W. T. Gorman, six miles east of this city in Guilford County. The weevils found today were adults and because of their age it is believed that there are plenty more of them in the county. Guilford grows little cotton, but in the past few years the amount under cultivation has increased, and it is feared that the arrival of the pests will stop further spread of cotton growing in Guilford.

**Had Bad Cough And Pains In Her Lungs**

All well now, gaining weight and strength; does own house-work.

"Last September I took a heavy cold. I kept getting worse, until finally I had pains in my bronchial tubes and all through my lungs. I had a bad cough, could not sleep at night, and was sore through my lungs that I could hardly stand it. I consulted three different doctors and took their medicine, but it did not get any better. I suffered death a hundred times. One doctor told me I had a deep cold in the walls of my lungs. Another said I had bronchial trouble. He kept changing my medicine and burned me all over with electricity.

"I read in the paper about Milk's Emulsion helping other people, so I thought I would try it. While I have only taken four small bottles, my lungs do not hurt me any more. My cough is gone and I have gained four pounds and I am still gaining. I was able to do the first washing today that I have done since last September. In fact, I am now doing my work with pleasure and feel like it is a dream that I have my health again."—Mrs. Iida E. Schiffs, 672 Congress St., Toledo, Ohio.

Milk's Emulsion restores healthy, natural bowel action; it is a truly corrective medicine, doing away with all need of pills and physic. It promotes appetite and quickly puts the digestive organs in shape to assimilate food, and thus build flesh and strength. Milk's Emulsion is strongly recommended to those whose sickness has weakened it; it is a powerful aid in resisting and repairing the effects of wasting diseases. Chronic stomach trouble and constipation are promptly relieved.

"This is the only solid emulsion made, and so palatable that it is eaten with a spoon like ice cream. Truly wonderful for weak, sickly children.

No matter how severe your case, you are urged to try Milk's Emulsion under this guarantee—Take six bottles home with you, use it according to directions and if not satisfied with the results your money will be promptly refunded. Price 60c and \$1.50 per bottle. The Milk's Emulsion Co., Toronto, Canada. Sold by druggists everywhere.—Advt.

**THE BEAUTIFUL WOMEN OF HISTORY**

Gave Much Time to the Improvement of Their Complexion.

It is said that the most beautiful women of history are the ones that spent most of their time in the cultivation, improvement and prolongment of the life of their beauty. They used all the means they could find to accomplish this charm.

Black and White Beauty Bleach will remove skin blemishes, such as tan, sun and wind freckles, blotches, liver spots. It will clear your complexion—make your skin soft and youthful.

Black and White Bleach is a delightful perfumed, pink-tinted cold cream compound, approved and used by particular women. It will not grow hair on the face and when applied forms an invisible coating on the skin.

Black and White Soap should always be used with Black and White Beauty Bleach. Its regular use will keep the skin in perfect condition.

All good stores can supply you with Beauty Bleach at 50c a jar and Black and White Soap at 25c a cake.

**MEETINGS DRAW LARGER CROWDS**

The meetings in observance of World Fellowship Week, at the Phyllis Wheatley Branch of the colored Y. W. C. A., are growing in interest. The Friday evening Rev. W. G. Hamilton of the Calvary Presbyterian Church, will have charge of the meeting, and Miss Grace L. Osborne, secretary of the City Department, Southern Region, will also be present. All meetings through the week begin at 8 o'clock.

**BOX SUPPER**

A box supper will be given Saturday night, November 18, at the Azalea School House, the proceeds to be used for the benefit of the new church. The public is invited.



Black and White Toilet Requisites are sold all over the world.—advt.

**In a Hurry? Come here and dine this Noon.**

**The HAYWOOD**  
31 Haywood Street,  
Luncheon from 12 on. Served Quickly  
60c

**All We Need**

to convince you of the worth of our QUICK Delivery is AN ORDER.

'Phone 183 or 132

**WALKERS DRUG STORE**  
Corner Haywood and College Sts.

**Chiropractic**  
The Key To Health.

Dark days will soon be turned into sunny days if you will allow Chiropractic to solve your health problems. See your Chiropractor

**Drs. Tucker & Tucker**  
CHIROPRACTORS  
X-Ray Equipment  
Phone 3357, 321 Haywood Bldg., Asheville, N. C.

**Chiropractic**  
The Key To Health.

Dark days will soon be turned into sunny days if you will allow Chiropractic to solve your health problems. See your Chiropractor

**Drs. Tucker & Tucker**  
CHIROPRACTORS  
X-Ray Equipment  
Phone 3357, 321 Haywood Bldg., Asheville, N. C.

**PHONE 2747**  
for **HARDWARE** Service

**Special—November 15 and 16**  
Buy It Now—You Will Need It Later

**ROOFING**  
1 ply Sea Gull Roofing, good quality, for sheds and chicken houses. Special .....\$1.10

**KEGS**  
10 gallon Oak Kegs, with 6 hoops, varnished outside. Special .....\$2.10

**STONE JARS**  
3 gallon Stone Churn Jars, brown and white, glazed. Special .....50c

**Central Hardware Co.**  
21 BILTMORE AVENUE.

**THURSDAY, FRIDAY and SATURDAY at the IVORY and BLUE SHOP**

Might as well be frank about it—this unusually mild weather has created a 'sluggishness. Folks are not buying things that they are GOING TO NEED, (and they are going to need them sooner than they think—a sudden change of weather and watch the scramble.) So, since things won't move of their own accord we have resorted to the one sure means of attracting business—the matter of PRICE REDUCTIONS on SEASONABLE Wearthings.

A bit of rain and we'll all wake up some morning to REAL WINTER—and to the fact that we just have to have that Heavy Coat or that Suit. And there'll be no price reductions THEN. "A word to the wise," is it sufficient?

**NOW THEN AS TO THURSDAY, FRIDAY AND SATURDAY**

Here are SKIRTS in Prunella and Eponge, pleated and plain models in Stripes or Plaids. There is a good assortment of colors in this showing. Size waist bands 27 to 36.

- \$ 7.50 all Wool Prunella Skirts.....\$ 5.95
- \$10.00 Prunella and Eponge Skirts.....\$ 7.95
- \$12.50 Prunella and Eponge Skirts.....\$ 9.95
- \$15.00 Prunella and Eponge Skirts.....\$11.95

These are All THIS Fall's Models

**The Popular Cap and Scarf Sets**

These in brush wool, colors, Rose, Brown, Tan and Green.

Three Day Special.....\$5.00

**Misses' and Ladies' Sweaters**

Twenty per cent discount from regular prices during the three days. Medium weight and light colors. Regular prices are \$5.00 and \$10.00.

Three day prices.....\$4.00 and \$8.00

**Coat Suits**

Tailored models, Navy, Black and Brown, regular prices \$39.00 to \$68.00. Less 20%.

Three Day prices.....\$31.20 to \$54.60

**SPORTS COATS**  
All Wool materials in tans and browns. Extra special for three days only

**\$14.75**

**POLO COATS**  
Tans and browns, silk lined, or plaid backs. A mighty good buy.

\$25.00 Polo Coats, at

**\$18.75**

**A. L. Price**  
THE SIGNATURE OF FASHION

63 Haywood Street  
ASHEVILLE, N. C.

"THE BIG HOME STORE"—WITH THE LITTLE PRICES

**The RACKET STORE**

16 Biltmore Avenue Phone 231 L. BLONBERG, Prop.

**Get That Overcoat Today DON'T WAIT**

Colder days are coming and it's a good tip to buy your new Overcoat here. Our stock is complete with the newest and most up-to-date Fall models. Regularly sold at \$30.00, very special at

**\$ 22.50**

**MEN'S FALL HATS**

\$4.00 Value

No man can go wrong in buying a Truly Warner Hat in the newest shades and shapes. **\$2.85**

Men's Velour Hats in the very latest styles. Special **\$4.95**

**Don't Put Your Foot Into High Prices**

Star Brand, all leather, in black and tan, with low rubber heels; English or Blucher lasts. Special .....\$4.95

U. S. Army Shoes, Munson last, welt sole. Special .....\$4.45

Star Brand, in black or tan, with low rubber heels. Special .....\$3.95

**A Superfine Homestead For Sale**

The beautiful and spacious residence of Mr. S. Sternberg, located at 186 Victoria Drive, consisting of 12 rooms and two baths; hot water heating; two-car fire-proof garage. The home is situated on seven acres of ground with every new and modern convenience. It is indeed like a fairy tale, and must be seen to be appreciated.

For further information call

**S. Sternberg & Co.**  
333 PHONE DEPOT ST.

**BETTER Furniture for less money**  
at the Store -of -Largest -Assortments

Buy Your Furniture The Susquehanna Way Low Cash Prices And three months to pay!

**SUSQUEHANNA FURNITURE CO.**  
UNLESS YOU ARE SATISFIED WE ARE NOT  
SUSQUEHANNA FURNITURE CO.

"We Turn Houses Into Homes."  
20 Broadway. Phone 631.