

FISHERMAN AND FARMER

Published Every Friday.] Located in the Finest Fish, Truck and Farming Section in North Carolina.

[Circulation Large.

A. H. MITCHELL,
Editor and Business Manager.

"The Smallest Hair Throws a Shadow."

Price Per Year \$1.50
Single Copy Five Cents.

Established 1886.

EDENTON, N. C., FRIDAY, MAY 30, 1890.

NO. 257.

PARAGRAPHS.

If you feel "out of sorts," cross and peevish—take Dr. J. H. McLean's sarsaparilla; cheerfulness will return and life will acquire new zest. Sold by H. A. Bond.

Agents are wanted to represent this paper in every part of Chowan county.

"It goes right to the spot," said an old man, who was rubbing Dr. J. H. McLean's Volcanic Oil Liniment to relieve rheumatism. For sale at H. A. Bond's.

\$5 00 in Gold will be paid anyone who will bring us 12 yearly subscribers.

If you are suffering with weak or inflamed eyes, or granulated eyelids you can be cured by using Dr. J. H. McLean's strengthening Eye Salve Sold by H. A. Bond.

The FISHERMAN & FARMER wants a good, trustworthy and reliable agent in all the surrounding localities. Liberal commission will be given right parties. Apply at once, by letter or at the office.

Don't irritate your lungs with a stubborn cough when a pleasant and effective remedy may be found in Dr. J. H. McLean's Tar Wine Lung Balm; For Sale at H. A. Bond's.

The quality of blood depends much upon good or bad digestion and assimilation. To make the blood rich in life and strength giving constituents use Dr. J. H. McLean's Sarsaparilla. It will nourish the properties of the blood, from which the elements of vitality are drawn. Sold by H. A. Bond.

The circulation of the blood—quickened and enriched—bears life and energy to every portion of the body; appetite returns; the hour of rest brings with it sound repose. This can be secured by taking Dr. J. H. McLean's Sarsaparilla. Sold by H. A. Bond.

Children who are troubled with worms may be quickly relieved by giving them Dr. J. H. McLean's Liquid Vermifuge. It kills and expels worms. For sale at H. A. Bond's.

For rheumatic and neuralgic pains rub in Dr. J. H. McLean's Volcanic Oil Liniment, and take Dr. J. H. McLean's Sarsaparilla. You will not suffer long, but will be gratified with a speedy and effective cure. Sold by H. A. Bond.

If you are all run down—have no strength, no energy, and feel very tired all the time—take Dr. J. H. McLean's Sarsaparilla. It will impart strength and vitality to your system. For sale by H. A. Bond.

The blood must be pure for the body to be in perfect condition. Dr. J. H. McLean's Sarsaparilla makes pure blood and imparts the blooms of health and vigor to the whole body. For sale at H. A. Bond's.

BUCKLEN'S ARNICA SALVE.

THE BEST SALVE in the world for Cuts, Bruises, Sores, Ulcers, Salt Rheum, never Sores, Tetter, Chapped Hands, Chilblains, Corns, and all Skin Eruptions, and positively cures Piles, or no pay required. It is guaranteed to give perfect satisfaction, or money refunded. Price 25c per box. For sale by Dr. W. J. Leary.



NORFOLK SOUTHERN RAILROAD COMPANY.

SCHEDULE IN EFFECT MAY 1, 1890.
Mail Train leaves Norfolk 9:20 a. m., daily except Sunday, and arrives at Edenton 12:35 p. m. Leaves Edenton 1:00, and arrives at Norfolk at 4:30 p. m.

At Norfolk close connections with all rail and steamer lines.
At Elizabeth City—with steamboats for all points on Pasquotank, North and Alagator rivers.

At Edenton—with N. S. Railroad company's steamboats, Plymouth, and Mary E. Roberts for all points on Chowan, Scuppernon, Little, Cashie and Roanoke rivers, and Jameville & Washington, and Albemarle & Raleigh Rail Roads, also with Str. Haven, Belle for Mackey's Ferry and points on the A. & P. R. R.

The steamer Plymouth, plying between Edenton and Williamston, will go to Hamilton on Tuesday and Friday of each week, leaving that place at 2 o'clock a. m., on Wednesday and Saturday.

Norfolk passenger and freight station at Norfolk and Western Railroad Depot.

Freight received daily, except Sundays.
Through tickets on sale and baggage checked between Edenton and Elizabeth City and Baltimore, Philadelphia and New York by Bay Line and Old Dominion steamers and N. Y. P. and N. R. R. form Norfolk, and between Norfolk and Washington, Plymouth, Williamston, Windsor and Jamesville.

M. K. KING, General Manager.

EASTERN CAROLINA DISPATCH.

FAST FREIGHT LINE.

Regular line of steamers between Atlantic & North Carolina R. R., New Bern, Washington and Elizabeth City.

Daily all rail service between Edenton, New York, Philadelphia, Baltimore and Norfolk.

Through cars, as low rates and quicker time than by any other route.
Direct all goods to be shipped by Eastern Carolina Dispatch, as follows: From Norfolk by N. S. R. R.; Baltimore by P. W. & B. R. R.; Philadelphia by Pennsylvania R. R. Dock St. Station; New York by Pennsylvania R. R., pier 27 North River.

E. WOOD, Agent, Edenton, N. c.



HANDSOME income for all—5 to 10 dollars per day easily made. Pleasant work. Send 10 cents (2c stamps) for free particulars. SOUTHERN PUBLISHING AND SUBSCRIPTION AGENCY, 118 Main St., Norfolk, Va.

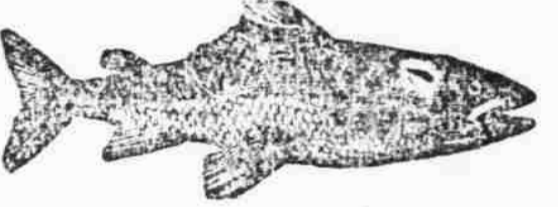
AUTOMATIC SEWING MACHINE!

Prices reduced. Every family now can have the best Automatic Sewing Machine in the market at reduced price. For particulars send for our new Illustrated Circular with samples of stitching. Our Illustrated Circular shows every part of the Machine perfectly, and is worth sending for even if you have a Machine. Kruse & Murphy Mfg. Co., 455 and 457 West 26th St., N. Y. City.

Subscribe for this paper

C. E. WARNER & CO.,

Wholesale Commission Merchants in FISH, Lobsters, Game, Terrapin, etc.



Special attention given to the sale of NORTH CAROLINA SHAD.

Nos 22, 23, 32, 33, 35 & 39 Dock St. whf Philadelphia.

Returns sent Daily. No Agents Employed.

O. S. HARDING & CO.,

WHOLESALE COMMISSION DEALERS IN FRESH FISH.



Special Attention Given to Sale of NORTH CAROLINA SHAD.

Prompt Returns.
9 & 10, 36 & 37 Dock St. Fish Mkt., Philadelphia.

CURREY & TRESTER

Wholesale Dealers in Fresh Fish,



Oysters, Game, Produce, etc

Pier 19 North Delaware Ave. PHILADELPHIA.

North Carolina SHAD a specialty. Returns Daily. No Agents.

If you want to obtain the Highest market price for your

FRESH FISH



Game and Terrapin.

—SHIP TO—

I. A. Lee & Co.
27 & 28 Dock St. Fish Market, Philadelphia, Pa.

Anderson, Bagley & Co.

Wholesale Commission Dealers in FRESH FISH, GAME, &c

—Highest Prices Guaranteed—
3 Rosnake Dock, Norfolk, Va.

—RETURNS DAILY—
{ Correspondence and Consignments }
{ : : : Solicited. : : : }

GAUZE DOOR COOK STOVES.

These are the latest improvements in Cook Stoves.

Health and Economy.
Result from their use.

HAND BOOKS FREE.

Persons interested are invited to examine the Stoves at our Store. Prices moderate.

HOOPER & CO., Edenton, N. C.

W. H. Harrell

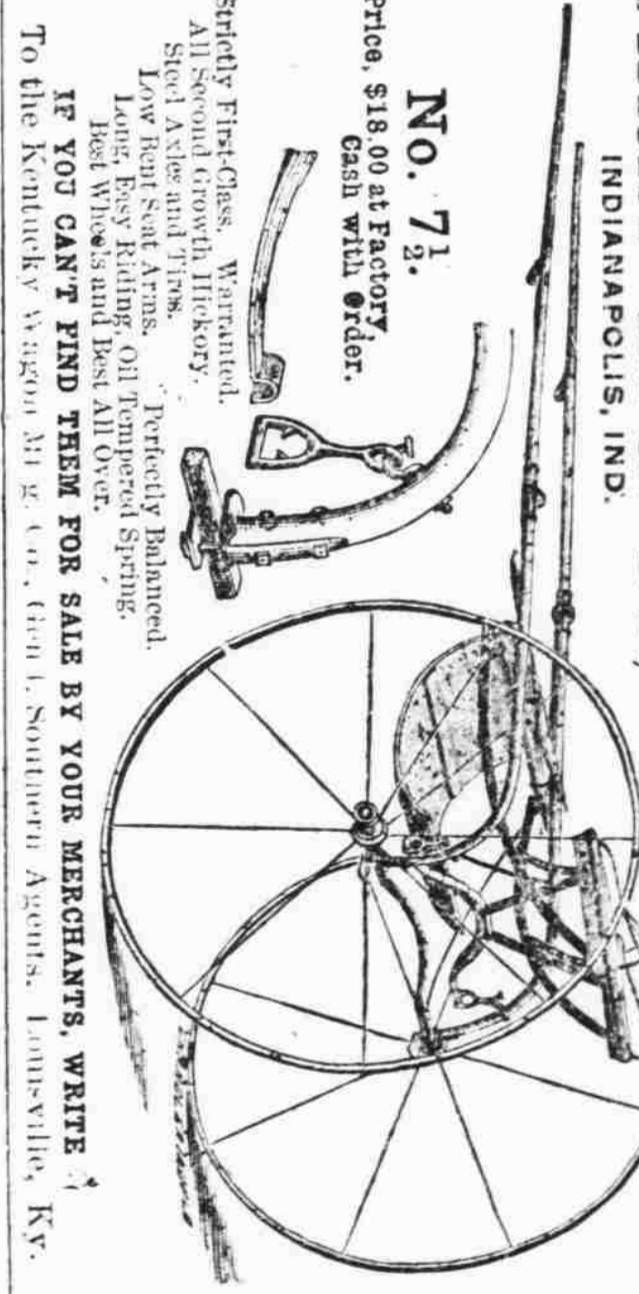
Corner of Main and Water Sts.

Dealer in all kinds of Riding Vehicles,

Carts and Buggies and Road Carts of different styles.

A full line of cart and buggy material such as spokes, rims, axles, boxes, tires, shafts, hubs, cross-bars and single-trees and all other material usual in a coach furnishing establishment. Satisfaction as to price and material guaranteed.

Repairing done at moderate rates. Sail Boats made and furnished on order.



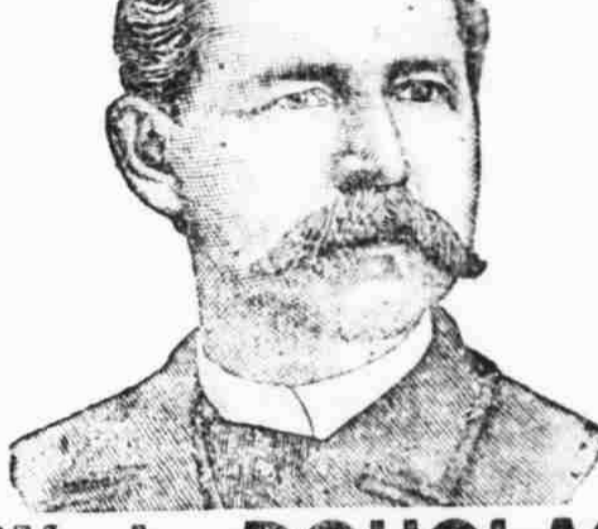
FREE! OUR NEW FREE! Wash in the world. Perfect timekeeper. Warranted heavy. Solid. Solid. Heating coils. Both ladies and gent's sizes. Washes and saves of soap. One FEMME in each locality can secure the free, together with our large and valuable line of Household Appliances. These samples, as well as the wash, are free. All the work you need to do to show what we can do for you—this is your friends and neighbors and those about you—this is your chance to get a new machine for your home when once started, and then we are paid. We pay all express, freight, etc. After you know what we would like to go to work for us. You can get from \$25 to \$50 per week and upwards. Address: Sisson & Co., Box 112, Portland, Maine.

UNANIMOUSLY ADOPTED

BY THE CHOWAN COUNTY FARMERS' ALLIANCE JULY 4, 1888.
RESOLVED, That we adopt the FISHERMAN AND FARMER as the organ of Chowan County Alliance and of the Sub Alliances composing it.

CAUTION

Take no shoes unless W. L. Douglas's name and price are stamped on the bottom. If the dealer cannot supply you, send direct to factory, enclosing advertised price.



W. L. DOUGLAS

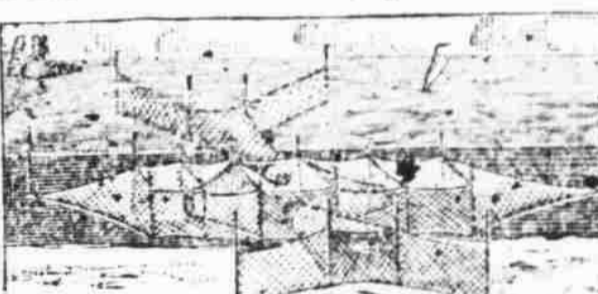
\$3 SHOE FOR GENTLEMEN.

Fine Calf, Heavy Laced Grain and Creed-moor Waterproof.
Best in the world. Examine his \$7.00 GENUINE HAND-SEWED SHOE. \$4.00 HAND-SEWED WELT SHOE. \$3.00 POLY AND FARMER'S SHOE. \$2.50 EXTRA VALUE Calf SHOE. \$2.25 & \$2.00 WORKING MEN'S SHOES. \$2.00 and \$1.75 BOYS' SCHOOL SHOES. All made in Congress, Button and Lace.

\$3 & \$2 SHOES FOR LADIES. \$1.75 SHOE FOR MISSES. Best Material, Best Style, Best Fitting. W. L. Douglas, Brockton, Mass. Sold by

People's Shoe Store, W. R. Brothers, Manager.

Fish & Terrapin Trap



Adapted to River and Long Shore Fishing in 4 to 10 feet water.

A Great Catcher!

Send for descriptive price list to J. S. JOHNSON & CO.,

MANUFACTURERS OF TWINE AND NETTING,

121 South Street, Baltimore, Md.



NETTING

—FOR—

SEINES

—AND—

POUNDS

WM. J. HOOPER & CO., 119 E. Pratt, near Light, BALTIMORE, MD., Manufacturers of



COTTON AND FLAX GILLNETS, CORKS, SEINE LEADS, &c. Seine Twine of all kinds, Manila, Cotton and Hemp Rope. PRICE LIST FREE. Please Mention This Paper.