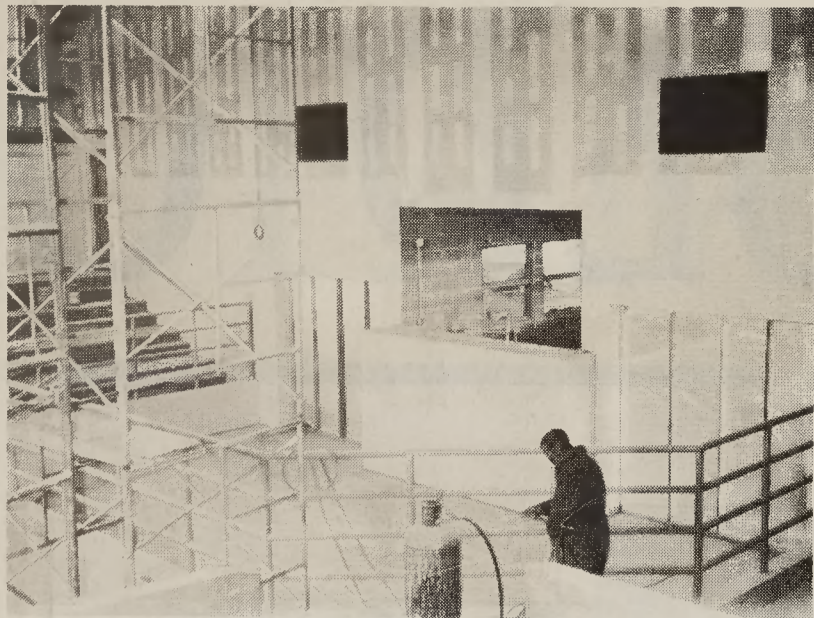


The arena



The new Sampson County Livestock Arena, set to open in April, contains a sale and showroom, meeting room, and classroom space. Construction is nearly completed on the livestock pens, as well as other areas of the facility. The arena is located on U.S. 421.

County's livestock facility a dream now becoming a reality

By Susan Welch
Staff Writer

Four months ago, the new Sampson County Livestock Arena was a dream on paper, but since the groundbreaking in June, the dream has gradually taken shape, and the completed \$1,000,000 facility is slated to officially open for business in April.

According to George Upton, director of the Sampson County Cooperative Extension Service, a livestock show and sale has been tentatively scheduled for the first of April and the facility is expected to become the region's center

for many such events.

Upton said construction of the new arena goes hand-in-hand with Sampson County's status as one of the fastest-growing cattle producing states in the southeast.

One factor that triggered this phenomenal growth, Upton said, was the county's hog industry.

According to state environmental laws the waste, or "effluent" from hog lagoons, cannot be allowed to contaminate the water supply. It must be drained off and used in another manner.

The Sampson County Cooperative Extension Service has virtually pioneered

the development of a system that recycles the effluent from the hog lagoons into a powerful fertilizer which can be used to enrich bermuda grass, in turn harvested for cattle.

In essence, a spinoff of one industry (hog production) has become a major industry in its own right.

Upton said not only will the new arena accommodate a growing agricultural industry, it will replace a building that has played a pivotal role in the growth of Sampson County's livestock industry, but has admittedly seen its day.

Built in 1961, the old livestock arena, located behind the county complex on Rowan Road, is crowded and in disrepair. The new arena will be larger, 150 feet by 325 feet, and will contain a sale and show room that will seat 200 people, a meeting room that will seat 80 people, and classroom space.

The entire facility, with the exception of the animal pens in the back of the building, will be heated and air conditioned, an amenity not present in the old facility.

The arena can be used for livestock shows and sales, 4-H shows and sales, youth judging events, and educational

events using live animals, among other uses.

Funding for the new arena came from a combination of both state and county money.

According to Upton, the Sampson County Board of Commissioners petitioned the state legislature and the N.C. Department of Agriculture for money the state had allocated to another project, a proposed produce facility in Roseboro.

"That project never got off the ground," Upton said in an earlier interview, "and the state agreed to funnel the money into the livestock arena."

After bids were let, the county selected

three contractors, one of which is local, to complete the project.

Dixie General Contractor of Wallace was awarded the general contract for the facility. The plumbing, heating, cooling and electrical contracts were awarded to Clinton Mechanical Contractors and Watson Electrical of Wilson.

"All I can say is it's going to be as nice as they come, and serve a useful purpose," Upton said of the arena. "I think it will do an awful lot for Sampson County's livestock industry, serving as a regional center for both industry events and sales."

Carroll's one of largest integrated agribusinesses in the nation

By Jeanne Schoninger
Staff Intern

Carroll's Foods, Inc. was founded in

1939 by O.S. Carroll. Originally, Carroll's was a corn grist mill and elevator operation. Still owned by family mem-

bers of O.S. Carroll, Carroll's Foods, Inc. is now one of the largest, totally integrated agribusinesses in the United States.

Carroll's is the second largest pork producer with swine facilities in North Carolina, South Carolina, Virginia, Utah and Mexico. Swine are grown on company and contract farms in state-of-the-art confinement facilities with environmentally sound waste disposal facilities. Smithfield Foods, Inc., the leading East Coast packer in which Carroll's has a substantial ownership, market the matured animals.

Carroll's entered the poultry industry with only a few houses. Now, Carroll's is one of the largest turkey producers in the nation. Newly hatched turkeys are raised by contract growing partners.

Growers provide the facilities, utilities and labor while Carroll's provides the birds, feed and technical support.

Once the birds reach market weight, they are processed and marketed through Carolina Turkeys, which is jointly owned by Carroll's and Goldsboro Milling Company. Carolina Turkeys is the largest turkey processor and marketer in the United States.

An in-house laboratory allows Carroll's to test incoming ingredients and outgoing feed. Carroll's produces feed in four manufacturing plants and over 400 vehicles provide feed delivery, service and animal transportation.

Thousands of acres of crop land are farmed to support the animal operations and to supply adequate facilities for nutrient recycling. Carroll's possesses a leading edge in the field of agriculture because of its environmental outlook and

attentive utilization of resources.

Carroll's attributes the success of the business to highly knowledgeable and experienced associates and growers who strive to improve their products.

In 1991, Carroll's Foods purchased exclusive rights to the National Pig Development breeding stock. N.P.D. animals are noted for their lean carcasses.

In 1992, a two day open house extravaganza for the new 17,000 square foot office facility was held at Carroll's. Carroll's broke ground for a new feed mill in Laurinburg in 1993. The mill can produce 13,500 tons of feed per week.

A joint venture in Utah began in 1993. It is projected that the venture will grow to a size of 117,000 sows with a supporting feed mill and fresh meat processing plant.

N.C. Marble blend of technology, skills

North Carolina Marble and Granite Company was formed in 1960 by the merger of New Bern Monument Company and Clinton Memorial Works.

According to Edgerton, "Our operation is a unique blend of ancient skills and modern technology."

Stone cutters using hand held hammers and chisels, work in conjunction with diamond tipped cutting and polishing tools to create lasting memorials.

Designs which reflect the life of a person are created using state of the art computer-assisted drawing systems.

The chosen inscriptions and designs are deeply engraved into the solid granite using a high pressure stream of steel

abrasive.

N.C. Marble and Granite Company has nine employees at the Clinton plant.

A large sales force is in place across the market area served by the firm.

"The company is continually seeking to upgrade its production method and design capabilities, as well as improve the communication between various sales offices and the Clinton location, so as to provide even better service to our clientele," Edgerton.

EASTERN CAROLINA MEDICAL CENTER

DR. P.K. VYAS

DR. WILLIAM ADAIR, JR.

Dr. Barbara Mack - James Mountcastle, PAC
Patrick Malone, PAC - David Paulson, PAC

FAMILY & INTERNAL MEDICINE

Certified by the American Board of Internal Medicine
Special Interest In Heart Disease

- X-rays
- Ultrasounds (Heart, Gall Bladder, Pelvic, Etc.)
- Lung Function Test
- Cardiac Stress Test (Blockage in the Heart)
- Arterial Doppler Studies (Circulation in Legs)
- ECHO Cardiography (Look for Enlarged Heart, Etc.)
- PAP Smears
- Laser and Cyro Surgery
- Complete Lab Facilities
- Drug Screening
- Physical Therapy
- Removal of Moles, Skin Tags, Etc.
- Venous Studies (Check for Blood Clot in Legs)
- Holter Monitor (Check for Irregular Heart Beats)

New Patients Welcome

- Providers for:
- Health Source
- Blue Cross/BS PCP
- Carolina Access
- Provident PPO
- BC/BS Costwise

WE DO ALL YOUR INSURANCE BILLINGS FOR YOU
OFFICE HOURS BY APPOINTMENT

894-5787

Hospital Attachment

Betsy Johnson Hospital, Dunn
Good Hope Hospital, Erwin

EMERGENCY CARE PROVIDED

ONE MEDICAL DRIVE
(CORNER 301 N. & 242)

BENSON, N.C.

Emergency
892-4944

In-House Consulting Service Provided By:

GASTROENTEROLOGY

Endoscopy - Colonoscopy

Hiren Doshi, M.D.

Raleigh office (919) 881-9999
Benson office (919) 894-5787
If No Answer (919) 775-5455

Board Certified in Gastroenterology/
Internal Medicine

GENERAL ORTHOPAEDICS

Arthroscopic Surgery
Dhillon Orthopaedic Center, P.A.

Tejpal Singh Dhillon, MD
Fred E. Benedict, MD

Dr. George Charron
Board Certified in Orthopaedic Surgery
- By Appt. Only -
Raleigh ofc - 1108 Dresser Ct.
878-8300
Benson ofc - 1 Medical Dr.
894-5787



We specialize in:

- Grading
- Utilities
- Site Work
- Clearing

We have been established
for 12 years and carry
20 years of experience



592-5705

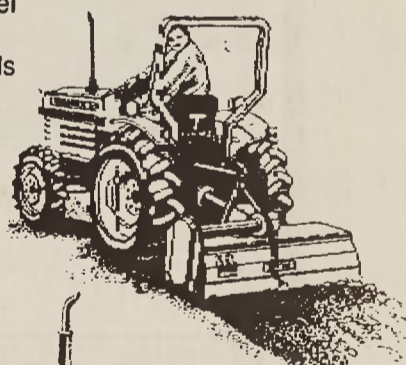
Rt. 1 Box 22B Turkey, NC

WHAT'S IN A NAME?

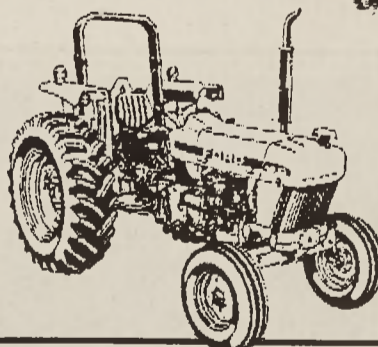


- Kubota L-Series, legendary performance, unmatched versatility, superior operation
- 2C.5-33 PTO Horsepower
- Kubota direct-injection diesel engine
- 8 forward/8 reverse speeds and wet disc brakes

- Available with Standard Transmission or Glide Shift Transmission (GST)
- 2 or 4WD available



Kubota.



NORTH AMERICA'S LEADING TRACTOR LINE

- More conveniently placed controls
- Hydrostatic steering. Easy handling, durable, responsive
- Heavy-duty axles. Both two- and four-wheel-drive axles; stronger, durable
- Transmission. Choose the 8x2 or 8x8 shuttle...the perfect loader transmission, or the deluxe 16x8 DualPower™
- Choice of four models:
"3430"-40 PTO horsepower
"3930"-45 PTO horsepower
"4630"-55 PTO horsepower
"5030"-62 PTO horsepower

Come in for for the full details

NASH EQUIPMENT

Sales-Parts-Service
1-800-633-5632
Hwy. 53W, Burgaw

