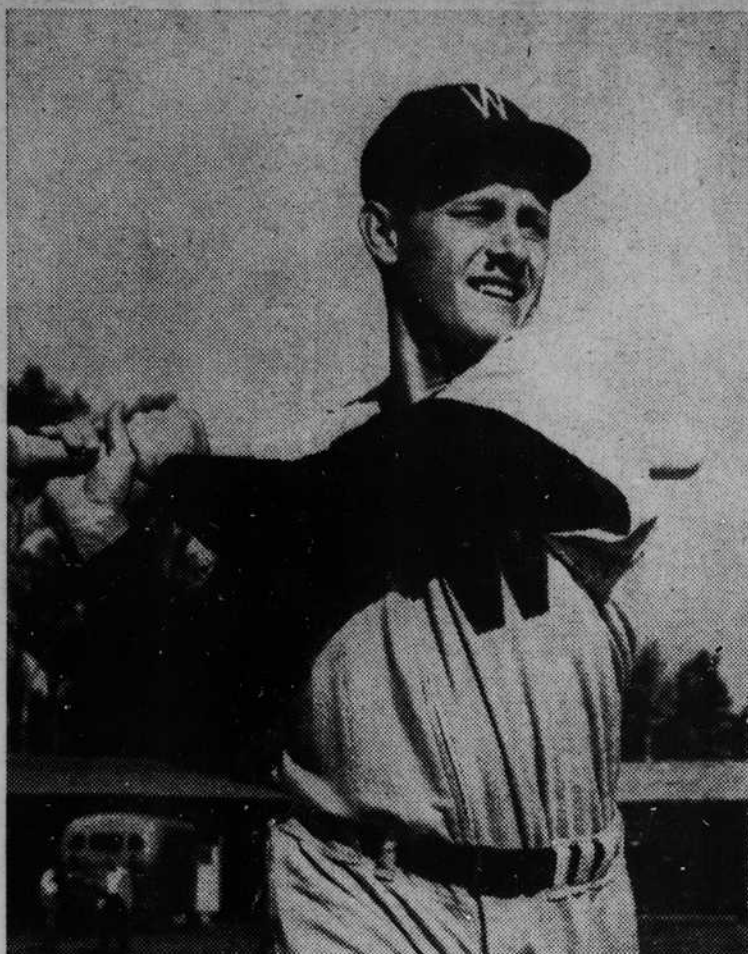


# SPORTS PAGE

Edited By John I. Anderson

## Coan And Senators Play In Charlotte



GIL COAN, pride of Transylvania with the Washington Senators, will play in Charlotte on Sunday afternoon, and several sport fans from Brevard and Transylvania are planning to see the game. The Senators will face the Cincinnati Reds at Griffin park in an exhibition affray.

## Regulations For 1951 Trout Fishing Season Are Released

### Wildlife Resources Commission And Forest Service Give Rules For Pisgah

The special regulations applying in the Pisgah National Forest for the 1951 trout fishing season are released this week by Clyde P. Patton, executive director of the Wildlife Resources Commission, and Donald J. Morriss, forest supervisor of the Pisgah.

They urge all fishermen to be extremely careful with fire.

"Entrance to the wildlife management areas may be prohibited on short notice providing weather conditions create a fire hazard warranting such action, and if such action should be taken, please remember that forests and wildlife are twin crops: to have one you must protect the other," the officials point out.

The special regulations for the Pisgah National Forest and the Pisgah Game preserve are as follows:

**1951 SEASON**  
Pisgah National Forest  
Fishing Shall Comply With N. C.

### State Laws and the Following Regulations:

1. Daily permits will be required of all persons, regardless of age, the fee for which shall be \$1.

2. Fishing shall begin not earlier than 6 o'clock a. m. All fishermen must check out by 8 p. m.

3. All fishermen are required to present their catch of fish for inspection at checking station at the end of each day's fishing. To this end fishermen will be required to leave their fishing licenses at the checking station. The licenses will be returned when they check out.

4. Creel limit: Ten fish per day. Fish of any size may be retained in the creel.

5. The right is retained by the North Carolina Wildlife Resources Commission to refuse to sell a permit to anyone who fails to check out at the end of any day's fishing or who has violated regulations governing conduct on the cooperative areas.

### Pisgah Game Preserve

1. Cars belonging to fishermen are subject to search for illegal

fish, game and firearms while in the preserve.

2. Artificial lures only are permitted on the Pisgah Game preserve with the exception of Lake Powhatan and lower South Mills River below the crossing at Turkey Pen station. The use of natural bait is not permitted on any tributary of the South Mills River.

3. Beginning June 15, Lake Powhatan, exclusive of Bent Creek, is open daily to the general public.

4. All fishermen fishing in the North Fork of the French Broad River or upper South Mills River will use the Davidson River checking station or Big East Fork checking station.

5. Bread shall be considered a natural bait and its use in waters limited to fishing with artificial lures is prohibited.

It is said that when Stalin came to inspect a Moscow insane asylum the inmates were assembled in the hall. According to instructions, they shouted, "Long live our beloved leader, the great Stalin!"—all except one man, who was immediately accosted by an agent of the secret police.

"Why did you not greet our beloved Comrade Stalin?" was the stern question.

Because I'm not insane, I'm just the janitor."

When you think of prescriptions, think of VARNER'S—adv.



## Rambling With The Sports Editor

**GIL COAN GOING GOOD . . .** We are giving to our readers a letter recently received from Clearwater, Fla., which should be of intense interest for baseball fans pulling for him to come through this season as he has never done before. The letter, in part, follows: Clearwater, Fla. March 21, 1951

Dear Sir:

I've read in The Times about Gil Coan and I know how proud everyone is of him. I was out to the game yesterday watching Gil play, and believe me, he did so good I thought I would tell you about his performance.

First, he made a nice catch in left-center in the first inning. Also in the first inning he got on by an error. Next, in the fourth inning, he got a home run off the slants of Robin Roberts, Philly star pitcher. In the fifth inning he got a single to right field. Next, he got a single in the seventh and again in the ninth he got another single.

When you can get that many hits off pitchers of the caliber of Robin Roberts, Jim Konstanty and Blix Donnelly you have really done something. His homer went about 315 feet.

The reason I am telling you about him is because my mother is from Brevard and her family lives there now.

This coming season Gil should hit about .320, if hard luck doesn't prevent him from playing regularly. He should lead the American league in stolen bases also. I sure hope that he will have a good year for Washington. The Phillies beat Washington 8-5 in 10 innings. Am enclosing a picture of Gil also.

Sincerely yours,  
JOHN MOUNGRIDES.

**PROSPECTS GOOD . . .** Although it is somewhat early to make any predictions, all indications point to a pretty good baseball team at the Ecusta Paper corporation this year. Ecusta will again be entered in the Western North Carolina Industrial league, and this season games will be played twice each week . . . on Tuesday and Saturday afternoons. With the new cellophane division opening up soon, there is the possibility that additional baseball players will come to Ecusta to try out for the team. We're looking forward to one of Ecusta's best seasons!

## Brevard Bowlers Win, Ecusta Team Rolls High Score

As the 1950-51 bowling season draws to a close, the Brevard Municipal bowlers trounced Ecusta 2-1 during the past week of bow-

ing, and Ecusta dropped a match to Stikeleather by the same score. One Brevard bowler, Bruce Reynolds, is in the big ten with an average of 185.

Although the Ecusta team went down in defeat, the local keglers had the top game score of the week in the WNC ten pin loop with a 991.

## RAIN HAMPERS BALL PRACTICE

Coach Dail Pleased With Prospects For Team. First Game Thurs.

Hampered by April showers, the Brevard high school baseball squad is worried about the season's opener next Thursday, April 12, with Canton.

Coach D. G. Dail says the number out for the team has increased to about 40, and that prospects are pretty good.

With several boys battling it out for the nine positions, Coach Dail reports that he will not announce starting line-up until the time for the game next Thursday.

## Carl Butler, Gang Here On Thursday

A musical program by Carl Butler and his Lonesome Pine Boys will be sponsored in the courthouse Thursday night, April 5th, at 7:30 o'clock by the auxiliary of the American Legion.

Butler is a recording artist for Capitol records. Appearing with him will be another Capitol recording artist Jimmie Skinner, who sings "Songs from the Heart."

The program is being sponsored by the American Legion auxiliary, and Mrs. Frankie Lewis, chairman, of the radio committee, urges the public to attend. Admission is 60 cents for adults and 30 cents for children.

Mother: You were a very tidy boy not to throw your orange peel on the floor of the bus. Where did you put it?

Johnny: In the pocket of the man next to me.

When you think of prescriptions, think of VARNER'S—adv.

## CARD OF THANKS

We wish to thank our friends for their many courtesies, flowers and words of sympathy during our recent bereavement, caused by the death of our late kinsman, Florida Fowler.

The Family

FOR THRILLING CHILLING SPINE-TINGLING ENTERTAINMENT

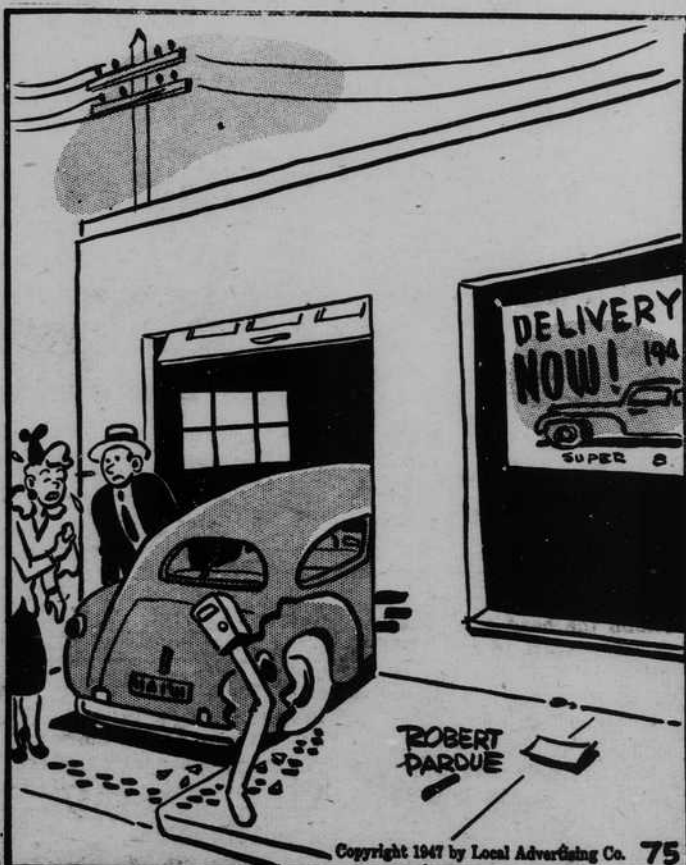
## THE SHADOW

SUNDAY

WPNF AT 5:00 O'CLOCK

"It's Mutual For Mystery"

## Car Tunes . . . . . By Goodwill Motor Co



"Don't take on so. GOODWILL MOTOR CO. can fix it good as new."

## ASK YOUR DOCTOR



## JUMPING-JACKS

FLEXIBLE SHOES FOR HARD WEAR

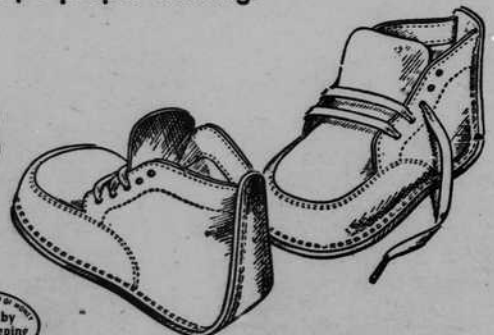
Don't take chances with precious foot health! Doctors everywhere recommend Jumping-Jacks for active young feet . . . because the fine, fully flexible leathers provide healthful freedom, and the unique one-piece sole and heel helps proper walking.



LOOK FOR THIS TRADE MARK

Sizes Through 6

\$4.75



# Jack Schulman

# Pearlman's

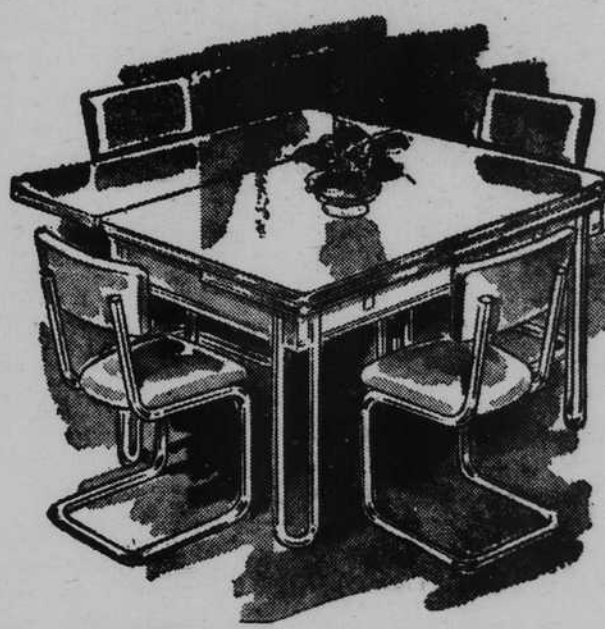
USE YOUR CREDIT!

"You Get More At The Good Value Store"

# Feature Buys

Now At PEARLMAN'S

## CHROME AND PORCELAIN DINETTE

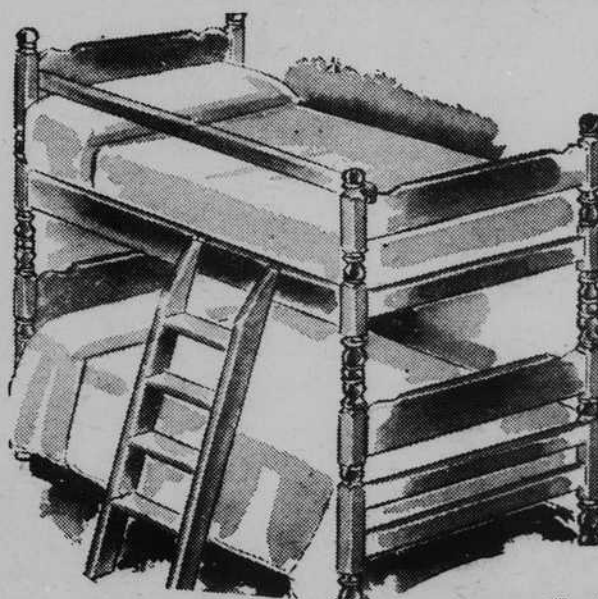


5-Piece Set with Refectory Top

Streamlined modern dinette or breakfast set with stainless refectory porcelain table top with that extends to afford extra room when needed. Chairs have comfortable padded seats and backs. Polished chrome frames.

\$49.95

## MAPLE BUNK OR TWIN BEDS



Versatile 2-Way Ensemble

Popular, space-saving bunk beds of attractive Early maple finish. Complete with American design in mellow ladder and guard rail.

\$49.95

Can be taken apart and used separately as twin beds to make an attractive conventional bedroom.

