

# SPORTS PAGE

Edited By John I. Anderson



## Rambling With The Sports Editor

**GOOD BALL GAME . . .** The Brevard Blue Devils gave local fans an eyeful of some real football last Friday night when they nosed out Black Mountain by the score of 7-6. It was a marvelous ball game, and the most exciting part was just prior to the final gun. Not one spectator left that ball game until it sounded, either. Many contend that Brevard was lucky as all getup to win that game, but they don't think back and remember that the local lads threatened several times and should have had about two more touchdowns. But we agree that it was mighty close, and we enjoyed doing the play-by-play over the air. For the benefit of you fans who aren't able to get to the games, we'd like to say that we're mighty happy to be bringing you an account of what's going on, and if you bear with us, we'll try to do a better and better job as the season progresses. Saturday night we'll be broadcasting from Memorial stadium in Asheville and bringing you the Brevard-Sand Hill game. We should also like to repeat that we are grateful to Pete Bikas, owner of Galloway's cafe, and Lloyd Y. Biggerstaff, manager of Coca-Cola in this area, for sponsoring these games.

**HOLE IN ONE . . .** If you have seen Pete Doyle standing on the corner here in Brevard this week talking very enthusiastically to some one, using his hands, mostly, don't be alarmed: he's telling about the hole in one that he made last week on No. 10 at the Brevard Country club. Don't take our word for it, Pete says he has witnesses. He declares that Al Perkins, Harry Loftis and Mrs. Robert Plummer will vouch for the accuracy of his contention. For the records it might be stated that Pete pulled a billiard shot; banking the ball on the clubhouse and ricocheting it against the pin in the hole.

**GOOD BOOK . . .** Speaking of golf brings to mind the new book, "Golf State, U. S. A.," edited by Bob Harlow, which describes North Carolina as the golfing state of the nation. It's well written; contains many scenic shots; discusses the good courses in the state; and explains the stressing of golf in the schools of North Carolina. By the way, a pic of Looking Glass Falls is on page 26.

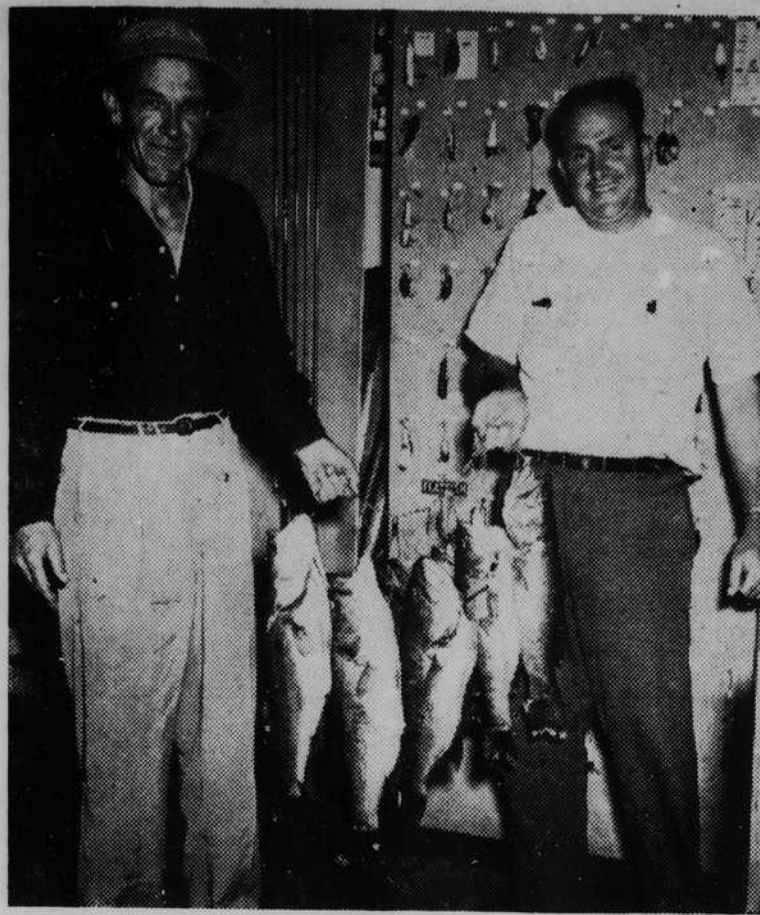
**TENNIS TRIO . . .** If you'd like to make a four at tennis one of these days, Bruce Livengood, Ed Roy and Ray Fry, all of the college, will welcome you. These gentlemen have the court at the college in good shape, but if you play with them, be sure you have a bottle of liniment handy, for our third set with the group gave us some tired muscles. PS. The score was 14-12, after 3-6 and 6-3 sets.

**LET US DO YOUR JOB PRINTING**  
Phone No. 7 The Transylvania Times

### GAME OF THE DAY OVER WPNF

Thursday, September 13—Tigers vs Yanks, Yankee Stadium, 1:25  
Friday, Sept. 14—Tigers vs Yanks, Yankee Stadium, 1:25  
Saturday, Sept. 15—Indians vs Senators, Griffith Stadium, 1:25  
Monday, Sept. 17—Indians vs Yanks, Yankee Stadium, 1:25  
Tuesday, Sept. 18—Indians vs Red Sox, Fenway Park, 12:55  
Wednesday, Sept. 19—Indians vs Red Sox, Fenway Park, 12:55  
Brought to you by the Ecusta Paper Corporation  
"Your Friendly Neighbor"

### Brevardians Bring Back Beautiful Bass



One of the finest strings of small and largemouth bass seen in Brevard in many moons is pictured above. SAM KENT, left, and OBIE WILLINGHAM, right, are holding eight of the finest they caught in Lake Chatuge at Hayes near Franklin. The men proudly displayed this catch in the Hobby and Sport Shop here and stated that they fished with surface lures and made the best catches after dark. The ones above ranged in weight from three pounds to over seven pounds. (Photo by Austin's)

### Blue Devils Open 1951 Season With Hard Fought Victory 7-6

#### Erwin Scores For Brevard In First Half. Losers Stage Comeback

The Brevard Blue Devils opened the 1951 campaign here on the local high school field with a hard-fought 7-6 victory over the strong Black Mountain eleven last Friday night.

The entire game, so far as the ultimate result is concerned, was played in two lightning minutes. Toward the end of the first quarter, after a period of feeling each other out, Black Mountain had first and 10 on their own 30-yard line. On a smash into the center of the line the ball squirted out of the arms of a Black Mountain back and into the eager arms of Larry Erwin, Brevard's 155-pound wingback, who played an alert, heads-up game and was one of the outstanding backs on the field. With the ball recovered in mid air, Erwin had clear sailing for Brevard's only TD. A pass from Erwin to McGaha in the end zone, was good and Brevard led 7 to 0.

After the kick-off, White, of Black Mountain, skirted end and galloped 40 yards without a hand being laid on him, but a penalty for offside nullified the play. Seconds later a pass to White in the clear slipped through his fingers for what would have been a sure

touchdown. As the half ended, Black Mountain was forced to kick to Auvil on the Brevard 35-yard line.

The second half found Black Mountain deep within its own territory as Larry Erwin's long, booming kicks went out of bounds or fell dead deep in coffin corner near the goal line. Brevard drove deep to the Black Mountain 9-yard line during the third quarter, but a 4th down pass went incomplete and Black Mountain took over on downs.

On the kick out which followed, Brevard, with Auvil carrying, drove to the 4-yard line where the Black Mountain line stiffened and held for downs.

White, of Black Mountain, in a twisting, slashing drive over the Brevard right tackle, drove to the 24, and a first down and two plays later made it 3rd and 2 on his own 32. White then hit over tackle again for a first down on the Black Mountain 34. Brevard held and after another exchange of kicks Black Mountain took over on its own 32-yard line.

On the first play White took a hand-off and literally outran the entire Brevard team as he walked a tight rope down the sidelines for 68 yards and a touchdown. The try for extra point was no good. Late in the fourth period with

### YANKS WIN OVER CARDS AT ECUSTA

#### Gregory Is Big Man On The Mound And At Bat. Drake Tops Losers

The Yankees won the Ecusta Interdepartmental baseball league by defeating the Cards in a one-game play-off to the tune of 10-2.

Manager Wilson Gregory was the big man for the winners. Gregory limited the losers to five hits, and then at bat he had three for four.

Strangely enough, the manager of the Cards was the top man for the losers. Troy Drake set the example for his teammates by slamming out two for three, but the Cards just couldn't stay in the game with the hard-hitting Yankees in the play-off. Jones, Wilkie and Riddle allowed the winners 13 safe balls.

#### Ecusta Teams Are Now In Play - Off

Ecusta's Interdepartmental baseballers are in the midst of the play-off for the post season trophy.

The opening game was played Wednesday between the Yanks and the Tigers, and the schedule for the next game is as follows:

Monday—Cards vs. Indians, 4:30, plant field.

The winners of the two games will play each other for the trophy at a later date, Fritz Merrell, the athletic director at Ecusta, announces.

### Blue Devils To Play Sand Hill In Asheville's Stadium Saturday

#### Several Local Players On Injured List. Expect Hard Scrap

Saturday night at 8 o'clock Brevard high school will meet Sand Hill at Memorial stadium in Asheville.

With the exceptions of Randall Bryson, tailback, who is out for the season and Graham Grant, fullback, who is a doubtful starter because of a sprained wrist, the entire squad is in excellent shape Coach D. G. Dail reports.

Bud Bishop, who has a cut over one eye that required two stitches, is believed ready for the Saturday night game at end.

Four men have been lost to the squad for the season because of injuries received but the squad has been augmented by the return of Carl Compton, triple-threat tailback who was injured last season, Roy Lambert, a reserve guard from last year's team, and four newcomers who bring the squad up to 36 men.

Local physicians are going to examine the members of the team and the medical department of the Ecusta Paper corporation is planning X-rays. This comprehensive medical attention will be given free.

Assistant Coach Marshall Teague, when contacted about the game, indicated that the Sand Hill team is always aggressive and alert and that the Blue Devils must play

### SQUIRREL HUNTING SEASON OPENS SAT.

#### Date Has Been Changed. Closing Time Is December 1

Squirrel hunting opens in Transylvania and adjoining Western North Carolina counties on Saturday, Sept. 15.

Originally, the North Carolina Wildlife Resources commission announced the season dates from October 1 to Dec. 1. However, this week the announcement was made out of the Raleigh office that the opening day of the 1951 squirrel hunting season would be Sept. 15. The season will close on Dec. 1.

their best game of the young football season if they wish to remain on the victory trail.

When you think of prescriptions, think of VARNER'S—adv

Coming — Soon  
**SAMSON & DELILAH**  
To The Co-Ed At  
Regular Admission

### Wildlife Club To Meet On Thursday

The regular meeting of the Transylvania Wildlife club will be held Thursday night at the city hall and Dr. Verne Hill, the president, urges all members to attend this important session.

Meeting time is 8 o'clock.

Dr. Hill reports that there are several important business items to come up and he requests full attendance.

#### STRANGER THAN FICTION

Because it will have the income from a \$50,000 trust fund, a dog in St. Petersburg, Fla., is assured a life of ease.

The late Mrs. Mary S. Morrow, a wealthy widow, set up the fund in her will. She directed that income from it be used to buy storks, sweaters, and leather harness.

When the dog dies the trust fund is to go to the Morton Plant Hospital association. Veterinarians say the dog, Dusty, a Boston bulldog, should live about ten years.

White again running wild, Black Mountain drove to the Brevard 4-yard line with but a few seconds to play. Two smashes into the line failed to dent the Brevard forward wall as the final gun ended the ball game. The final score—Brevard 7, Black Mountain 6.

When you think of prescriptions, think of VARNER'S—adv.



### DOGS LIKE . . . PURINA Dog Chow

- ECONOMICAL
- NUTRITIOUS
- TASTY

Pet dog owners . . . does your dog turn up his nose at just about everything you feed him? Oftentimes that's the case with pets, but here's an easy way to get at this disturbing problem.

Try feeding your pet dog Purina Dog Chow. Dogs like the taste of Dog Chow . . . really go for that fine flavor. It contains the ingredients dogs need for good health and playful vigor. What's more, Dog Chow is economical. For pennies, you can rest assured that your dog is fed a nutritious ration. See us for Purina Dog Chow . . . a great ration for pet dogs.

## B & B

### FEED & SEED COMPANY

WILLIS and ALLEN BRITAIN

Phone 66

Brevard, N. C.

YOUR STORE WITH THE CHECKERBOARD SIGN

## 1951 SCHEDULE OF LEADING SOUTHERN FOOTBALL GAMES

COLLEGE	SEPT. 22	SEPT. 29	OCT. 6	OCT. 13	OCT. 20	OCT. 27	NOV. 3	NOV. 10	NOV. 17	NOV. 24
ALABAMA	Delta St 21st, N	LSU	*Vanderbilt 22-27	Villanova 12th, N	Tennessee 9-14	*Mississippi St. 14-7	*Georgia 14-7	Mississippi So. 43-0	Georgia Tech 54-19	Florida 41-13
AUBURN	Erskine 21st, N	Vanderbilt 0-41	Wofford 5th, N 14-19	Florida 7-27	*Ga. Tech 0-20	*Tulane 0-28	*Louisiana Col.	Mississippi 57-2	Georgia 10-12	*Clemson 0-41
CHATTANOOGA	Presbyterian N, 55-0	Abilene 28th, N, 7-13	Evansville 5th, N	*N Caro St. N, 27-0	*Dayton 4-7	Miss. So. 26, N, 13-14	Vanderbilt 12-34	*Miami, Fla. 5th, N	Mem. St. N, 8-26	N. Tex. St. 22, 14-19
CLEMSON	*So. Carolina 14-0	*Pittsburgh 28-14	*N Caro St. N, 27-0	Tennessee 0-41	VPI 47-6	*S. Caro. 25, 14-14	Wake Forest 13-12	*Boston Col. 35-14	*Furman 57-2	Auburn 41-0
DUKE	Citadel N, 7-3	Ga. Tech N, 13-16	*Loyola (Calif)	No. Caro. St. 7-0	Vanderbilt 31-27	Virginia	*Ga. Tech 30-21	Wake Forest 7-13	*William & Mary	North Carolina 7-0
FLORIDA	*Georgia N	*Virginia 0-19	*Maryland 7-23	*Auburn 27-7	W. Forest 19, N, 0-13	Kentucky 6-40	*So. Carolina 20-34	Georgia 0-6	*Miami N, 14-20	*Alabama 13-41
GEO. WASHINGTON	Geo. Washington N	*No. Carolina 0-0	*Miss. St. 27-0	VPI 12th, N, 42-7	LSU N, 13-13	Furman 26th, 34-7	Alabama 7-14	*Florida 6-0	*Kentucky	*Richmond 30th, N
GEORGIA	SMU 13-33	*Florida N, 16-13	*Kentucky 14-28	VPI 12th, N, 27-7	Auburn 20-0	Boston Col. 19-7	Duke 21-30	VMI 13-14	*Auburn 19-54	Georgia Tech 10-7
GEORGIA TECH	*Texas	*Mississippi 27-0	Ga Tech 28-14	LSU 13-0	Villanova N, 13-13	*Vanderbilt	Miami, Fla.	*Tulane	*Geo. Washington	Davidson 46-14
KENTUCKY	Miss South. N	*Alabama	Rice N, 20-35	*Georgia N, 48-21	Auburn 20-0	Maryland N	Chattanooga 9th, N	Vanderbilt N, 33-7	Miss. St. N, 7-13	Tennessee 0-7
L. S. U.		*Tulane	Fla. State 5th, N	*Purdue 12th, N, 20-14	*Georgia N, 13-13	Mississippi 26th, N	Kentucky	Chattanooga 9th, N	Florida N, 20-14	Villanova 13-7
MIAMI		Kentucky 0-27	Bos. Col. 5, N, 54-0	*Vanderbilt 14-20	*Georgia N, 13-13	Miami, Fla. 26th, N	*LSU N, 14-40	*Auburn	Florida N, 20-14	Nebraska 30th, N
MISSISSIPPI	*Memphis S 21, N, 39-7	*Tennessee 7-0	Georgia 0-27	Kentucky N, 21-48	Tulane 20-27	Alabama 7-14	*Tulane	*Memphis State	*LSU N, 13-7	*Miss. St. Dec. 1, 27-20
MISSISSIPPI STATE	Arkansas St 67-0	*Georgia 0-0	Clemson N, 0-27	So. Carolina 14-7	*Maryland 7-7	*W. Forest 7-13	Tennessee 0-16	*Virginia 13-44	Notre Dame 7-14	*Miss. Dec. 1, 20-27
NORTH CAROLINA	N Carolina St 13-7	Wake Forest N, 6-6	*W. Forest 0-43	*Duke 0-7	Wm. & Mary 0-34	*VPI 34-6	*Louisville 2nd. N	*Davidson 15-7	*Maryland 16-13	*Duke 0-7
N. CAROLINA ST.	North Carolina 7-13	VMI N, 14-16	Furman 21-6	*W. Virginia 7-46	Davidson N, 0-39	Wm. & Mary 6-40	*Boston Col. 2nd. N	Stetson N	VPI 32-12	W. & Lee 22d, 7-67
RICHMOND	Richmond N, 20-6	Citadel N, 7-19	Duke 28-7	*No. Carolina 7-14	Alabama 14-9	Clemson 25th, 14-14	*Washington 34-20	*West Virginia	*Virginia	Wake Forest 7-14
SOUTH CAROLINA	Duke 0-14	Miss. St. 0-7	Baylor	Holy Cross	Mississippi 27-20	Tenn. Tech 48-14	*No. Carolina 16-0	Wash. & Lee 27-20	*Kentucky	*SE Louisiana 64-0
TENNESSEE		Miami (Fla.)	Alabama 27-22	Mississippi 20-14	*Florida 27-31	Auburn 28-0	Mississippi State	Kentucky	*Vanderbilt 35-6	Mem. State 29-13
TULANE		G. Washington 19-0	*VPI 45-6	Wash. & Lee 26-21	VMI 26-13	Georgia Tech	Chattanooga 34-12	Kentucky	Tulane 6-35	Wm. & Mary 13-0
VANDERBILT	Mid. Tenn. St. 47-0	*Auburn 41-0	*Wm. & Mary 25-19	*G. Wash. 12, N, 7-42	*Virginia 13-26	*Duke	Citadel 34-14	*LSU N, 7-33	*Richmond 12-32	VPI 22nd, 27-0
VIRGINIA	Wofford	G. Washington 19-0	Richmond 6-45	Wm. & Mary 47-0	Duke 6-47	*Catawba N, 13-14	Davidson 46-6	*Ga. Tech 14-13	*Baylor	VMI 0-27
V. M. I.		*N. Caro. St. N, 6-6	Richmond 43-0	Virginia 21-26	*G. Wash 19, N, 13-0	N. Caro. St. 6-34	Wash. & Lee 7-25	Wm. & Mary 0-54	*Louisville 33-28	*So. Carolina 14-7
V. P. I.		Maryland	W. Virginia 26-7	Richmond 46-7	*Miami, Fla. 19th, N	*No. Carolina 13-7	*Clemson 12-13	*Duke 13-7	Pittsburgh 7-21	*Richmond 22, 67-7
WAKE FOREST	*Boston Col 21, N, 7-7	*Oklahoma	Wash. & Lee 7-26	*Wake Forest 0-47	Geneva	*Penn State 0-27	*VPI 25-7	*Tennessee 20-27	Duke	*Maryland 0-41
WASH. & LEE	*Furman 21st N, 27-6		VMI 19-25		*N. Caro. St. 34-0	*Richmond 40-6	West Reserve 38-13	South Carolina		*Virginia 0-13
WEST VIRGINIA	Waynesburg						West Reserve 38-13	VPI 54-0		
WILLIAM & MARY	Boston U 14-16						*Pennsylvania			

NOTE: Games played at home grounds of teams in first column, except those marked (\*) played at grounds of teams in date columns.  
(N) Night game. 1950 scores given—first score is that of team in first column.

CLIP OUT AND SAVE THIS IMPORTANT SCHEDULE OF 1951 GAMES

FOR THE WORLD'S FINEST RECAPPING, SEE

## Brevard O.K. Rubber Welders

BACKED BY A NATION-WIDE GUARANTEE

**BREVARD BLUE DEVILS**  
September 15—Sand Hill at Asheville.  
September 21—Hendersonville at Brevard.  
September 28—Ben Lippen at Brevard.  
October 5—Asheville School for Boys at Brevard.  
October 13—Christ School at Christ School.  
October 19—Tryon at Brevard.  
October 26—Waynesville at Brevard.  
November 2—Mars Hill at Brevard.  
November 16—Canton at Canton.