

History Of Raising Of Funds For New Hospital Wing Reviewed, Costs Jumped

Recent Contribution By Olin Industries Reduces Indebtedness Considerably

By STAFF WRITER

Back in 1947 when the new Harry H. Straus wing was first proposed by the man for whom it was named, the estimated cost was \$50,000. The actual cost only five years later jumped over five times—to \$251,000!

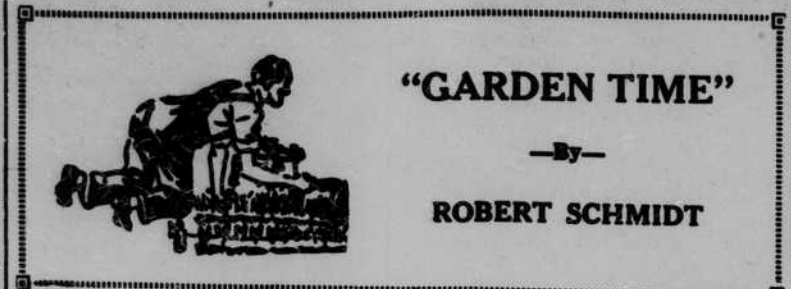
Everyone concedes that the cost of living has been increasing steadily during the years after World War II, but who would have ever dreamed that the same size hospital wing would increase in cost that much?

A headline in this newspaper on May 15, 1947, stated, "Plans Are Underway To Enlarge Hospital By Addition Of A 25-Bed Wing At Cost Of \$50,000."

When the Medical Care Commission was asked by the local board to furnish a portion of the funds in September, 1951, the estimated cost of the wing was already \$200,000. However, it must be pointed out that the commission required a number of additions to the original plans before they could approve the aid.

The Medical Care Commission is an agency in North Carolina designated to appropriate funds from both the state and federal agencies for improving and building of hospital facilities.

There was \$15,000 in the building fund, contributed by Harry H. Straus, his associates and other donors, in 1951. The Medical Care



"GARDEN TIME"

By ROBERT SCHMIDT

I have already received a number of new seed catalogs for 1954 and they are better than ever—

Commission agreed to furnish enough funds for the wing if the people in the county would raise \$77,400. After an extensive campaign headed by Ralph H. Ramsey, Jr., the goal was reached in January, 1952. A breakdown showed that businesses, schools, clubs and individuals contributed \$44,635; \$5,000 was received from the Martha Washington Straus and Harry H. Straus Foundations; and Olin Industries, Inc., Charitable Trust fund donated \$28,765.

Of the increased \$51,000 above the estimate, Medical Care provided all but \$18,500, which was borrowed from the Brevard Federal Savings and Loan association.

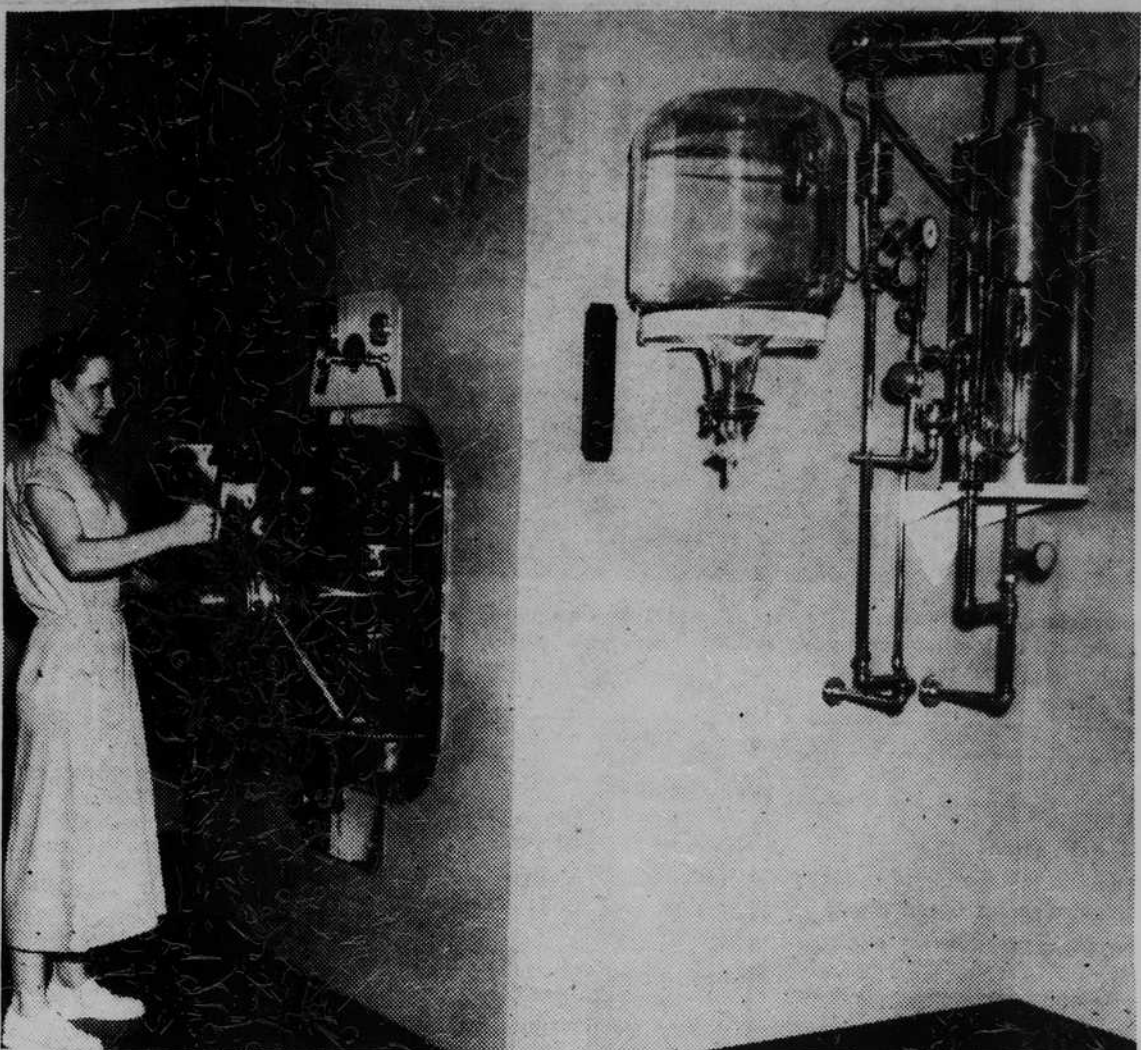
Last week Olin Industries Charitable Trust announced another contribution of \$20,000. Of this amount \$5,000 is to be used for a paved parking lot to the rear of the structure. The remaining \$15,000 will be applied on the loan leaving only \$3,500 to be paid by the citizens of Transylvania county, to whom the hospital belongs.

beautifully illustrated, and containing many new varieties of flowers and vegetables. If you haven't received yours, address a post card to your favorite seed house, or send for several different ones so that you can compare their specialties.

Each company has certain specialties and novelties which it emphasizes and recommends to its customers, as well as the standard varieties. This is especially true of hybrid varieties. A few seed companies produce new hybrid varieties which are offered for sale only by themselves. There are many hybrid varieties of vegetables being introduced by seedsmen—especially of tomatoes, cucumbers and sweet corn. Some of these are distinct improvements over standard varieties; some are not as good. The way to find out if they suit your needs is to try them out.

The seed of hybrid varieties are usually more expensive than standard sorts because of the labor involved in hand pollination. The home gardener should try out small plantings of these new varieties and hybrids because he takes very

Modern Equipment Used For Sterilizing Work In New Addition



The interior of central sterile supply in the new addition of the local hospital is pictured above, and MISS MARTHA ANN COATS, RN, is shown operating the new autoclave, which sterilizes all instruments and supplies used in any operation or delivery. At the right is the hospital's water distiller used to obtain distilled water. The equipment is the most modern on the market today. (Times Staff Photo)

ROAD PROGRESS IN 14TH IS CITED

Buchanan Says That Three Routes In Transylvania Were Widened

Harry E. Buchanan, commissioner of the Fourteenth State Highway division, today reported that a total of 8.03 miles of road work was completed recently in the Fourteenth.

Cherokee, Clay, Graham, Haywood, Henderson, Jackson, Macon, Polk, Swain and Transylvania are in the Fourteenth. Highway division headquarters are in Sylva. G. G. Page is division engineer. C. W. Lee is assistant division engineer in charge of construction.

In Transylvania, three roads were widened from ten to 14 feet. Neil road for 0.7 mile, Tom McKinney Circle for 0.15 mile, and Sigmon road for 0.4 mile were graded, drained, and surfaced with traffic-bound macadam.

JUST LIKE HOME

A group of American tourists were being guided through an ancient castle in Europe. "This place," they were told, "is 600 years old. Not a stone in it has been touched, nothing altered, nothing replaced in all those years."

"Well," said one woman drily, "they must have the same landlord I have."

LOVES HER STILL

First Mountaineer: "I hear your wife makes mighty good moonshine whiskey."

Second Mountaineer: "Yep. Reckon I oughta be ashamed of 'er. But with all her faults, I love her still."

When you think of prescriptions, think of VARNI'S.—adv.

little financial risk and at the same time he may be well pleased with the results. He should, however, continue to plant the old proven varieties until he has given the new ones a fair trial.

Every gardener should take an interest in the "All America" vegetable and flower variety selections of the last few years. These have been tested in several different locations in the country and can be generally recommended. Good examples are Wade snap beans, Salad Bowl leaf lettuce, Premier Great Lakes head lettuce, America spinach, Cherry Belle radish, and many others.

Next week's column will include

a list of recommended vegetable and flower varieties.

SAY—I SAW IT IN THE TIMES

Then there was the fellow who said he didn't use toothpaste because none of his teeth were loose.

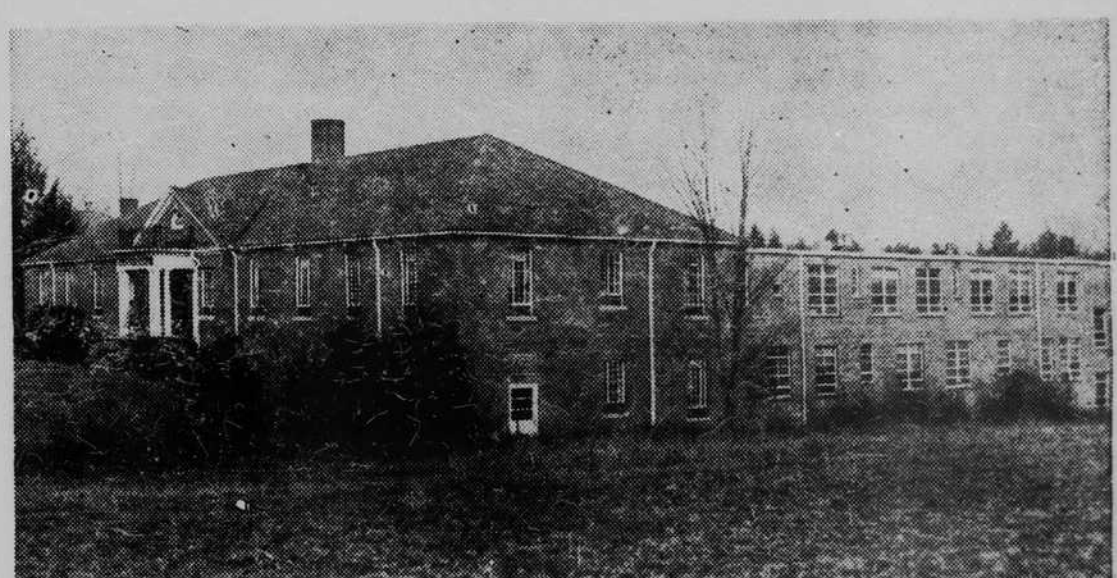
SPEEDY by GOODWILL MOTOR COMPANY INC.



Congratulations

SIX ASSOCIATES, INC.
Architects and Engineers

- Henry Irven Gaines
- Anthony Lord
- Stewart Rogers
- S. Clifton Minnich, Jr.
- Erle G. Stillwell



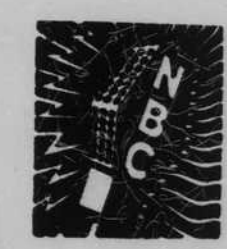
Greetings.

From One Transylvania Institution to Another!

We are happy to observe the completion of the new wing to the hospital, since the added facilities will meet a growing need in this progressive community.

The exercises dedicating the new Harry H. Straus Memorial wing will be broadcast direct from the Brevard high school stage Sunday afternoon beginning at 3 o'clock. You are urged to attend the dedicatory exercises and tour the new wing following the program. However, if you are unable to be present, we urge you to listen.

W P N F
Adjacent to the Beautiful Campus of
Brevard College
250 WATTS FULL TIME



1240
ON YOUR
DIAL