

TRANSYLVANIA'S Farm Front News

IT'S WORTH KNOWING

J. A. GLAZENER, Agent

Dairy Extension specialists down at State college say there are two main causes of off-flavors in milk in the spring season. They are wild onion, clover and other succulent pasture crop flavors.

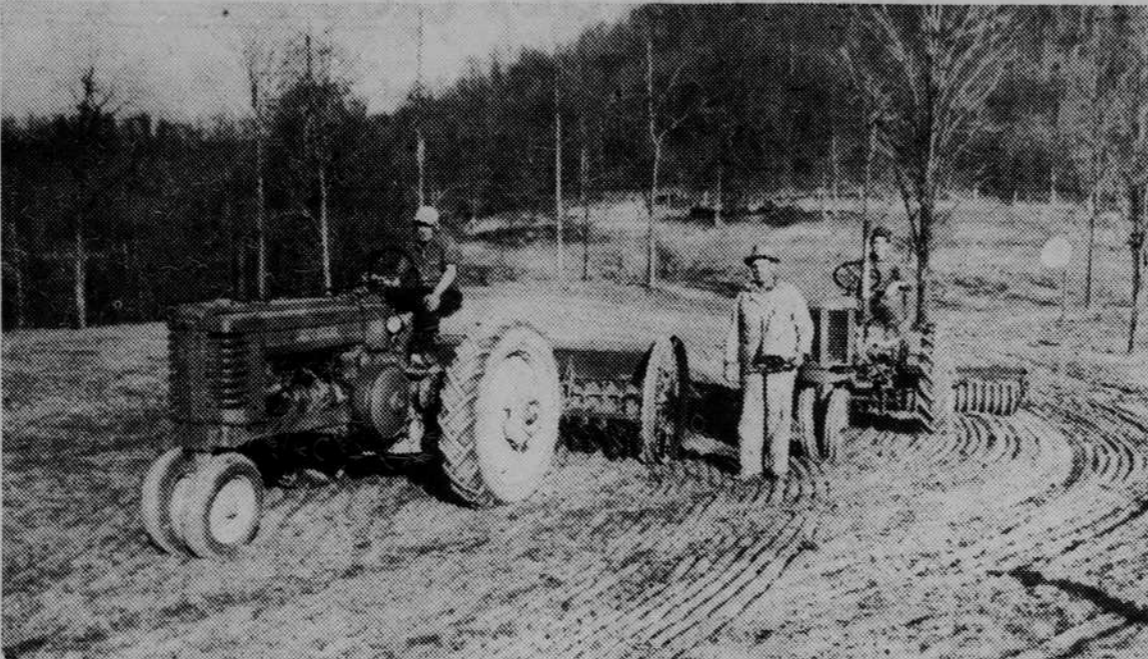
Hints in Controlling Wild Onion Flavors

1. Inspect pasture regularly for wild onion infestation. Try to catch it before you have milk rejected.
2. If at all possible, do not graze milking herd on pasture infested with onions. Use dry cows and heifers to nip off the onions. It may be practical to use an electric fence to fence off the area infested with onions. Preventing a few cans of milk from being rejected might pay for a fence.
3. If onion infestation is only mild, removing the milking herd 4 to 6 hours before milking may help solve the problem. Feed lots of dry roughages after they come off pasture.

Control Lush Pasture Crop Flavors

1. Feed an abundance of hay or other dry roughages before turning onto succulent Ladino-grass pastures. Turn into spring pastures slowly, only a few cows each day at first. (This will also help prevent bloat.)
2. Remove the milking herd from the pasture 3 or 4 hours before milking. Feed hay or other dry roughages when they come off pasture.
3. Make sure that salt and fresh water are available to the cows at all times.
4. Taste the milk regularly when off-flavors crop up, do something about them.

Pasture Seeding Time In Transylvania County



The men pictured above are seeding four acres of pasture, using all of the improved practices recommended by State college on the farm of Ralph Paxton in the Cherryfield community. GORDON WHITMIRE can be noted on the tractor on the left, and Mr. Paxton is in the center seeding the land. EDWARD PAXTON is on the tractor at the right. (Photo by Glazener)

WHAT'S BEING DONE? WHO'S DOING IT?

J. A. GLAZENER, County Agent

Fred Hamilton and Harley Merrill have either treated or directed the treating of 23 tobacco beds this year with methyl bromide gas in the Little River community. Last year three demonstrations were conducted in that community by Bob Love, assistant county agent. Who said the burley tobacco farmers in the Little River

community, and elsewhere in the county, would not put into practice research findings when demonstrated to them the economic value of such improved practices? The accomplishments in the Little River community this year are most encouraging and a positive proof that the burley growers are alert and interested in the research findings and information furnished them through State college.

Have you seen Cooper's Hill since Clarence Tinsley gave it a face lifting and then seeded it to grass and clover? It's a beauty spot if there ever was one in the county.

Mr. Tinsley joins many of his farmer friends in saying the best paying investment on the farm is his improved pasture acres. His investment in lime, fertilizers and seeds with proper application of same are important factors in his successful pasture story.

"GARDEN TIME"

—By—

ROBERT SCHMIDT



If you haven't already done so, it is time to sow tomato, pepper, and eggplant seed in hotbeds, cold frames, or flats in the kitchen window.

Although it is much easier to buy plants for the garden, we like to grow our own tomato plants. Then we know what we are getting. The seed sowing date will depend on how soon the weather will permit setting in the field. It usually takes from five to eight weeks to produce tomato plants large enough to set, depending on the temperature of the plant bed.

Pepper and eggplant are a little slower in developing. By figuring back from the last probable frost date we can determine when to sow the seed. By sowing the seed thinly, it may not be necessary to transplant, but usually transplanting to two inches apart about a week after the plants come up will give much stronger and stockier plants. There is no advantage in growing plants to blooming size

before setting in the field. The younger plants will stand the shock of transplanting better than the older ones.

Where no fusarium wilt is present, good early varieties are Valiant and Urbana. Earliana, of course, is an old standby. For the main crop Rutgers and Marglobe are popular. Of the hybrids, Burpee's Big Boy has done very well for us.

If the garden soil is infected with fusarium wilt, it is advisable to use only such varieties as Homestead and Jefferson, which are highly resistant to fusarium wilt. These are not early varieties but will survive the wilt.

The best variety of pepper is probably California Wonder. It is a good grower and has heavy, meaty fruits.

Eggplant is not a common vegetable in North Carolina gardens but should be grown more. The Florida Highbush and Ft. Myers Market are good varieties. As soon

State College's HINTS TO HOMEMAKERS

By Ruth Current

Storing Food Important — Milk: keep fresh milk tightly covered and under refrigeration. Dry and evaporated milk in cans should be kept in a cool, dry place. After it is opened dry milk should be kept in a tightly-covered container in the refrigerator.

Eggs: keep in a covered container under refrigeration. Never wash eggs until just before using. If only the yolk of the egg is used, keep the remaining white in a tightly-covered container. If only the white is used, put the yolk in a container and cover with water to keep it from drying.

Cheese: keep hard cheese in a tight container or wrapped in waxed paper in the refrigerator. Slice as needed. Cottage cheese and cream cheese absorb flavors readily, and should be kept tightly covered under refrigeration.

Fruits and Vegetables: store greens and salad vegetables (unwashed) and refrigerate in covered pans or waterproof bags. Keep ripe fruits like peaches, plums and berries refrigerated and unwashed until ready to use. Foods like peaches, pears, and tomatoes may be ripened at room temperature and then stored in the refrigerator. Keep potatoes and cabbage in a dark, cool place, and well ventilated. Store dried fruits in sealed containers in a cool place, though not necessarily under refrigeration.

as eggplants are set in the field, the plants should be covered with a DDT dust or spray to prevent flea beetles and potato beetles from destroying them.

Plantings of these three crops can be made at least two weeks earlier if the plants are covered with hotcaps or other plant protectors.

The North Carolina grape crop last year of 2,500 tons was slightly under 1952's 2,700 ton crop.

State College Expert Has Full Week Of Engagements In County

FARM QUESTIONS AND ANSWERS

Mrs. Clapp, Chairman, Announces Schedule Including Schools, Clubs

The itinerary for York Kiker, nutritionist expert from State college, who is giving demonstrations on uses for milk, is announced today by Mrs. S. C. Clapp.

Mrs. Clapp, teacher of home economics at Rosman high school, has been making arrangements for Miss Kiker's appearances here all next week.

The schedule thus far is as follows:

Monday, April 12 — Balsam Grove school at 9 a. m. Silversteen at 11 a. m. Quebec Home Demonstration club at the school, 1:30 p. m. County-wide meeting of farm bureau at Gaither's, 7:30 p. m.

Tuesday, April 13 — Lake Toxaway school, 10 a. m. Selica school, 1 p. m. Friendship club at Selica school, 2 p. m. Picnic at the Pink Beds, 7 p. m.

Wednesday, April 14 — Assembly program at Rosman elementary school, 10:40 a. m. Rosman Home Demonstration club at home of Mrs. Arthur Whitmire, 2 p. m. Agricultural workers' council in Rosman home ec department, 3:30 p. m.

Thursday, April 15 — Program at Rosman high school assembly, 12:30 p. m. Penrose Home Demonstration club at the school, 2 p. m. Classroom teachers supper, 7 p. m.

Question: What materials make a good worm bed?

Answer: Good results have been obtained by making a bed of equal parts sawdust, sand, woods dirt and chopped wheat straw. A satisfactory food is obtained by mixing four parts cottonseed meal, four parts soy bean meal and 100 parts "Flu-Bran." The mixture should be scattered over the worm bed. "Flu-Bran" heats excessively when used alone.

Question: What is whip grafting?

Answer: It is the most widely used method of propagating the apple and pear, although these two fruits can be propagated by budding. Apples and pears are grafted on apple seedlings which can be purchased from a nursery. January and February is the time to graft. Your county agent has a booklet on the mechanics of budding and grafting fruit trees.

Question: Why inoculate legumes?

Answer: Legumes are plants that bear their seed in pods, like a bean. They are used for hay, silage, seed, winter cover crops or pasture. Inoculation of legumes means the introduction of legume bacteria into the soil for the purpose of increasing the production successful legume crops, which also improve the soil. The actual increase in legume-crop growth resulting from inoculation depends upon the legume bacteria used and also upon soil and climatic conditions. Well-inoculated legumes have nodules (small lumps) on the roots, produced by effective legume bacteria. All three—the legume, the nodule, and the bacteria—are necessary for the nitrogen-fixation process. The nitrogen fixed may vary from 50 to 100 pounds per acre per year, depending on the plant, the soil, and the climatic conditions. Inoculation with effective bacteria may mean the difference between success and failure of the legume crop.

Question: Have you any tips for Dan Merrill.

Refreshments and a social hour will conclude the meeting with the P-TA fathers to be honored. A cordial invitation is extended to all parents, teachers and school patrons.

FATHERS NIGHT TO BE OBSERVED BY PISGAH P-TA

"House Of Hazards" Demonstration To Be Given By Fire Chief

"Father's Night" will be observed Tuesday evening, April 13, at the regular meeting of the Pisgah Forest Parent-Teacher association in the school lunchroom at 7:30 p. m.

Special music for this meeting will be furnished by the Ecusta quartet.

During the business meeting a report on the supper will be given and a new slate of officers will be presented by Mrs. Walter Moody.

An interesting program has been planned with "The House of Hazards" to be presented by the Brevard fire department and Chief

selecting a site for the home garden?

Answer: These five suggestions should be of help: 1. Select an area with good soil if possible; 2. If space is available, plan to rotate your garden to prevent disease build-up, especially nematodes; 3. Keep garden near house. If possible, locate garden where it can be irrigated; 4. Sites near top of hill will escape early and late frosts; 5. Full sun is best. Stay away from trees and large shrubs.

Employment in U. S. automotive plants totaled more than 900,000 persons at the end of 1952.

State law requires persons earning income in North Carolina to file yearly state income tax returns on or before March 15.

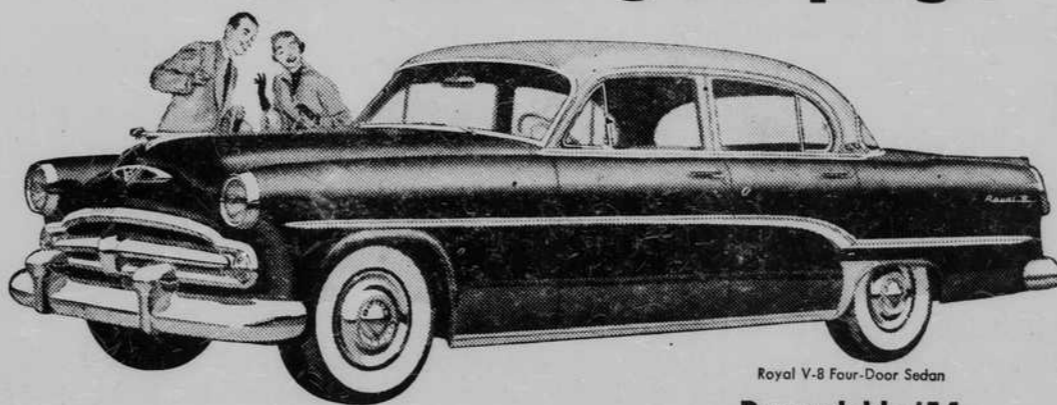
North Carolina state income taxpayers may, for the first time this year, file returns on a short form return.

When you think of prescriptions, think of VARNER'S.—adv.

Size Up the New '54 Dodge On Every Point of Value

<p>Dodge Backs Up Promise With Proof—And Lays The Record Right On The Line</p> <p>Record-Breaking Red Ram V-8 Proved the most efficient engine in any American car.</p>	<p>Fully-Automatic PowerFlite Newest, smoothest, most powerful of automatic transmissions.</p>	<p>Elegant Jacquard Fabrics Previously used in only a few models of the most costly cars.</p>
<p>Top All Eights in Economy In the Mobilgas Economy Run, Dodge outperformed all eights.</p>	<p>Shatters 196 Records Greatest performance ever recorded in official AAA tests.</p>	<p>New Full-Time Power Steering Takes more of the work out—leaves all the pleasure in.</p>

See what you get for what you pay!



Royal V-8 Four-Door Sedan

Dependable '54

DODGE

In the new '54 Dodge you will find solid, substantial qualities that mean more car for the money.

You'll find record-breaking performance matched by prize-winning economy. Superbly engineered power features. Interiors that rival the most costly cars.

Here is value that makes every mile more satisfying. Prices start below many models in the lowest price field.

Dodge Dealers of America Present: Danny Thomas, ABC-TV • Bert Parks in "Break the Bank," ABC-TV • Roy Rogers, NBC Radio

HAYES MOTORS, Inc.

YOUR DODGE AND PLYMOUTH DEALER

Dial 3-1541

Brevard, N. C.

GLADIOLUS BULBS

Bulbs grown for us on clean mountain land from bulblets and planting stock. In the following varieties:

- Valeria, Red
- Pickardy, Pink
- Snow Princess, White
- Minuet, Lavender
- Spic and Span, Melon Pink



FARMERS FEDERATION WAREHOUSE

Brevard, N. C.

Phone 2-2231

YES—we have GOOD CHICKS



When you buy chicks, you're entitled to ones that are checked for health to live... and bred to lay. That's the only kind we sell. We have Leghorns and bred-to-lay heavy breeds. You have every chance to make good money with these chicks.



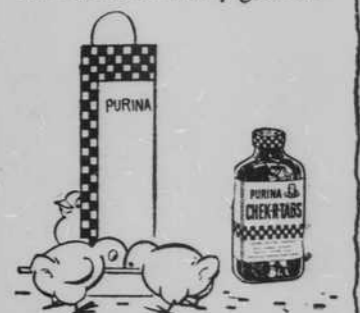
YES—Purina Chick Startena price is DOWN

Thanks to Purina's tremendous sales, Purina Chick Startena costs lots less this year.



YES—Startena will make FASTER SAFER GROWTH this year

Eight tiny but powerful growth and health boosters are mixed into Startena by Purina's exclusive Micro-Mix process. Each chick gets exactly what she needs every day for fast, healthy growth.



YES—we have CHICK SUPPLIES

Make our store headquarters for all your chick and poultry needs. Our employees are trained by Purina to know your problems and needs. Come in, real soon.



B & B

Feed & Seed Co. Willis & Allen Brittain

Dial 2-3911

Brevard, N. C.