

TRANSYLVANIA'S Farm Front News

Farm Questions And Answers

Question: Briefly, what does the new North Carolina "egg law" mean?

Answer: It simply requires that eggs sold on grade meet the requirements for the grades represented.

Question: Why was there need for such a law in North Carolina as the "egg law"?

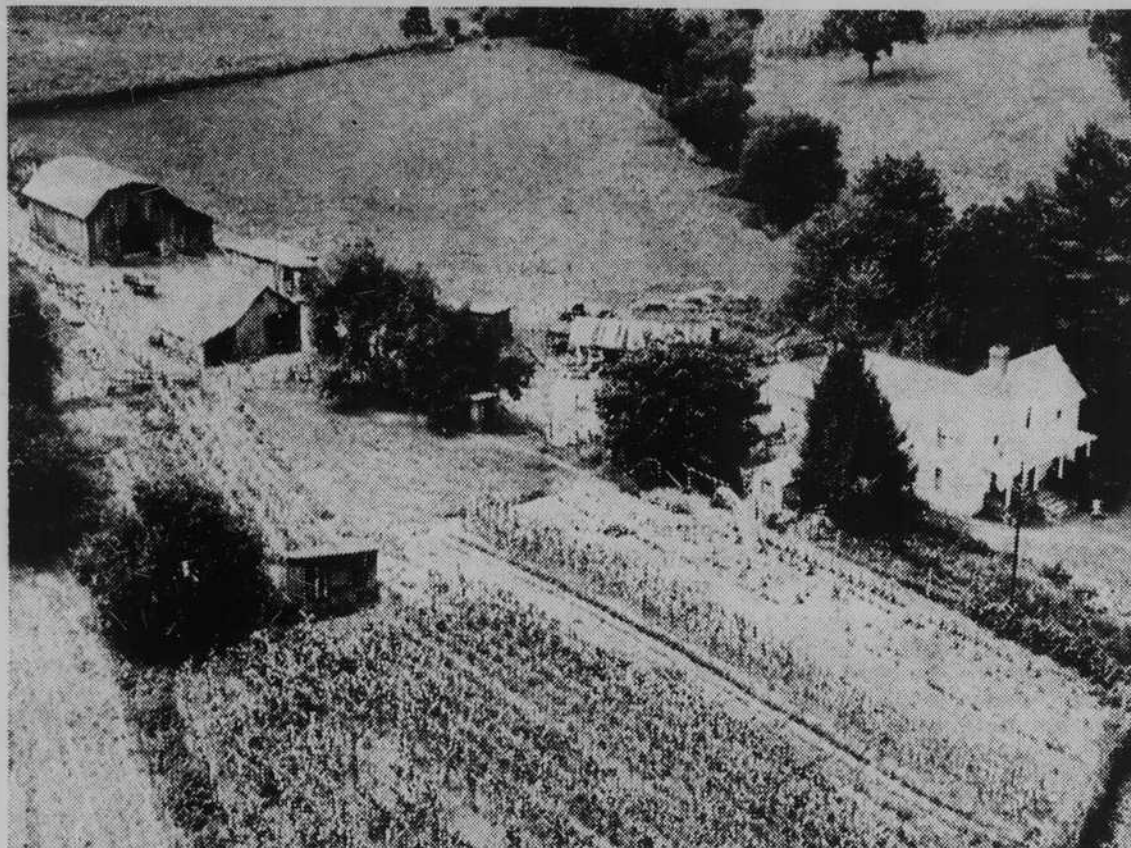
Answer: Certain distributors were making a habit of selling second grade "imported" eggs as first grade eggs in competition with locally-produced high quality eggs.

Question: How many more chickens would be needed in this state to produce enough eggs to meet its consumer demands?

Answer: A conservative estimate is that North Carolina producers would have to increase their flocks by 2,507,500 hens to supply enough eggs.

Question: After I store my grain under Commodity Credit corporation can't I just forget it?

Answer: No. Loss in quantity and quality will be charged against the farmer when final settlement is made or he may lose his loan protection entirely. It's a good idea for the farmer to make frequent checks on the grain and take measures to correct anything that may need attention.



THIS WEEK'S MYSTERY FARM should be very popular, since the house, the barns and surrounding fields show up so splendidly in the above aerial photo. If you are the first person to dry by The Times office and identify it, you will receive a free subscription to this newspaper.

The owner of the mystery farm is requested to come in and get a beautiful photograph of his property at no obligations whatsoever.

Old Time Singing At Etowah Sunday

There will be an old time Christian harmony singing at Etowah Methodist church on Sunday, May 1st. Singing will start around 10 a. m. and persons attending are asked to bring a picnic lunch as singing will not adjourn before around 3 p. m.

All Transylvania folks have a special invitation by Mrs. Verda Blythe, the secretary. This invitation is also extended to other counties. The secretary also urges old time singers to be present and bring their Christian Harmony song book and their spectacles.

as a cleansing agent helps save time and work.

To clean decorative objects of glass, china or pottery, dissolve three tablespoonfuls of baking soda in each quart of warm water used. Then dip a clean soft cloth into this solution and carefully clean. Rinse with a second cloth wrung out of clear warm water; wipe dry. If the piece is carved or embossed, use a soft brush; dip in moistened baking soda and brush gently. Rinse with cloth wrung out of clear water. Dry.

Cleaning Cooking Utensils — Cooking utensils and beverage makers of various kinds are subject to stain formation. Thus, dried-on-foods form hard-to-remove rings on baking dishes and casseroles. Coffee and tea leave brown stains in the pot or in cups in which the beverage is brewed or served. In the same way, containers used for growing ivy or house plants in water often acquire stubborn green rings and discolorations. The use of the basic baking soda cleaning solution (3 tablespoonfuls of soda to 1 quart warm water) is a safe, simple, easy-to-use remedy.

To remove dried-on stains from casseroles, baking dishes or glass or enameled ware cooking utensils in which food has been cooked, put three tablespoonfuls of baking soda into the dish, fill with hot water and let stand a few minutes. Then wipe off the stain, wash and rinse.

There are now about 364 commercial plants in North Carolina which maintain stocks of grains, either seasonally or during the entire year. This is a 46 per cent increase over 1950.

'LET'S CLEAN-UP, NOT BURN-UP,' A CHECK-LIST FOR GUIDANCE

By STAFF WRITER

Clear out debris: Get rid of rubbish or anything combustible that you're not going to use in attics, closets, cellars, garages. Rubbish, such as old papers and rags, is a fire hazard. It not only starts fires itself, but furnishes fuel for fires starting from other causes. Clean these hazards out of your house, store or factory.

Watch outside fires: Clean up your yard. Keep grass cut low around buildings. Never burn papers on a windy day when there's danger of sparks setting fire to any house, shrubbery, clothing or outbuildings. Use an incinerator wherever possible.

Clear out paint and oil rags: Destroy rags or keep in closed metal container; hang up mops and paint-soiled clothing so air can circulate around them. Paint or oil-soaked rags heat up from chemical action, burst into flames. Clean-up after painting jobs.

Check your fuses: Use 15 ampere fuses in regular household circuits, and don't make emergency repairs to fuses; keep wiring in good repair; have all work done by an expert electrician. Fuses protect your appliances, your house and your family from damage and possible fire when wires are overloaded or a short circuit occurs.

Avoid flammable liquids: Remove them from your house. Hundreds of persons are killed annually trying to clean with gasoline, benzine or naphtha. A tiny flame or spark—even from static electricity—will ignite gasoline vapor. Play safe! Do not use highly flammable or explosive fluids for dry cleaning!

Check stoves and heaters: Clean and check all heaters and have repair work done. Radiated heat from hot stovepipes, furnaces, and stoves will char beams or partitions too near them, causing a fire that will damage or destroy the house.

Portable heaters: Place portable, openflame heaters so they can't be knocked over or tipped. Avoid using rubber hose as fuel conductors for gas heaters; rigid metal pipes are safer. Always store kerosene outdoors, fill lamps and heaters outdoors. Don't carry or fill heaters while they are lighted. Keep a door or window open slightly while heater is burning.

Check pipes and chimneys: Clean soot out of chimneys and smokepipes. Check for cracks and holes; have chimneys repaired—where mortar or bricks are loose—and replace pipes if necessary. Dirty and defective chimneys are a leading cause of fires.

Check ash receptacles: Always put hot ashes into covered metal containers. Hot ashes in wood boxes set fire to many houses. In the cellar this is particularly hazardous, because flames quickly spread up through hollow walls of building.

Fireplace care: Use a wire-mesh screen in front of fireplace. Be sure the fire is out before you retire or leave the house. Sparks from unguarded fireplaces can start serious fires.

General repairs: Plan needed painting and renovating this spring. Remodel and modernize your home for greater safety. Replace faulty stair treads. Install a heavy flush-type door at head of cellar stairs, fitted tightly and kept closed. This will hold basement fires in check.

Smokers: Don't smoke in bed. Smoking in bed can be fatal. Fumes from burning cloth may overcome or asphyxiate you before fire reaches you. Place plenty of ash trays about your home for smokers. Keep matches in safe containers and away from young children.

LET US DO YOUR JOB PRINTING
Dial 2-4111 The Transylvania Times

IT'S DYNAMITE!
PURINA'S
NEW BABY PIG CHOW

A New Taste Discovery
to start baby pigs eating and gaining early

This exclusive Purina taste discovery contains Pura-Fat (selected fats), Pura-Sweet (selected sweeteners), vitamins, minerals, and other known ingredients to keep pigs eating and gaining.

Start creep feeding Baby Pig Chow at 7 days. Feed one 50 lb. bag to a litter... then change to Pig Starters. That's the way to start 'em on the market road in a hurry.



FREE SAMPLES while they last. Come in. Let us tell you more about Purina Baby Pig Chow.

Your Store with the Checkerboard Sign

B & B
Feed & Seed Co.
Willis & Allen Brittain
Dial 2-3911 Brevard, N. C.



You get more **STARTIN' QUALITY**

Spartan Quality **Chick Starter**

First step in Spartan's new **10-10-20 PLAN** to help you grow great layers!

Spartan Quality really has the startin' quality! Chicks get the balanced nourishment they need right from the start... because every bite is balanced. It's loaded with energy... vitamins... proteins and minerals... plus antibiotics.

Cash Wholesale Grocery
E. Jordan St. Dial 2-3481

Researched-Feeds for the Southeast



GARDEN TIME
ROBERT SCHMIDT
N. C. STATE COLLEGE

It should be safe now to plant most warm season vegetable crops anywhere in the state east of the mountains. It is true that I have had tomato plants killed by frost in Wake county as late as April 25th but that is unusual. Also, if the plants have been well hardened a light frost will not harm them. Tomato, eggplant, and pepper plants should be hardened before transplanting to the field by withholding their water supply; that is, by keeping them on the dry side for a few days.

Try some of the new bean varieties this year. Wade and Contender are excellent varieties and they are almost immune to mosaic which sometimes reduces the production of Tendergreen considerably. Improved Stringless Blue Lake is an excellent pole bean, especially for canning and freezing, and it is absolutely stringless.

It is time to talk about sweet corn again. There are a few gardeners who still plant early varieties of field corn for roasting ears because the ears are large and there are not many earworms. However, once you have given real sweet corn a fair trial you will not be satisfied with field corn. There is no comparison in edible quality.

Recommended varieties for both fresh use and for canning or freezing are Seneca Chief, Golden Cross Bantam and Ioana. These are all yellow varieties. Corn is mostly wind pollinated and therefore it is best to plant in blocks of two or three rows rather than in a single row. Sweet corn is of best quality if used as soon as harvested. If it cannot be used immediately, it should be kept on ice or in the refrigerator, otherwise it will lose a large part of its sugar content in a few hours and will taste like field corn.

The emphasis is still being put on icebox size watermelons. The New Hampshire Midget variety which grows to the size of a cantaloupe has become quite popular in the home garden. Hills may be spaced as close as five feet apart. A fault of this variety is that it becomes over-ripe very quickly. The

State College's HINTS TO HOMEMAKERS

By Ruth Curren

Brighten Bric-A-Brac — Glass or china vases, bric-a-brac, figurines and decorative pieces of a similar nature add their own inimitable touch of home to the rooms in which they are used if they sparkle and glow with immaculate cleanliness. A dusty film almost inevitably gathers on all such articles. To remove it, the use of baking soda

best of them all, in my opinion, is the Japanese seedless melon. It will average from eight to 12 pounds in weight, and is of excellent quality. There are seldom more than a dozen mature seeds in a melon. The rest of the seeds are undeveloped and may be eaten with the melon. Seeds for planting are undeveloped and may be eaten with the melon. Seeds for planting are quite expensive — four to five cents per seed this year — but the results are worth it. The only retail source of seed that I have listed is the Joseph Harris Seed Co., Rochester 11, N. Y.

what a value!

FOR ONLY **\$79⁵⁰** PLUS TAX

The **NEW Senior Companion**

A Complete **ROYAL[®] Portable**

Has all these Office Typewriter Features:

- Office Typewriter Keyboard
- Left and Right Margins
- Segment Shift
- Finger Flow Plastic Keys
- World's Fastest Typewriter Action
- 2 Color Ribbons

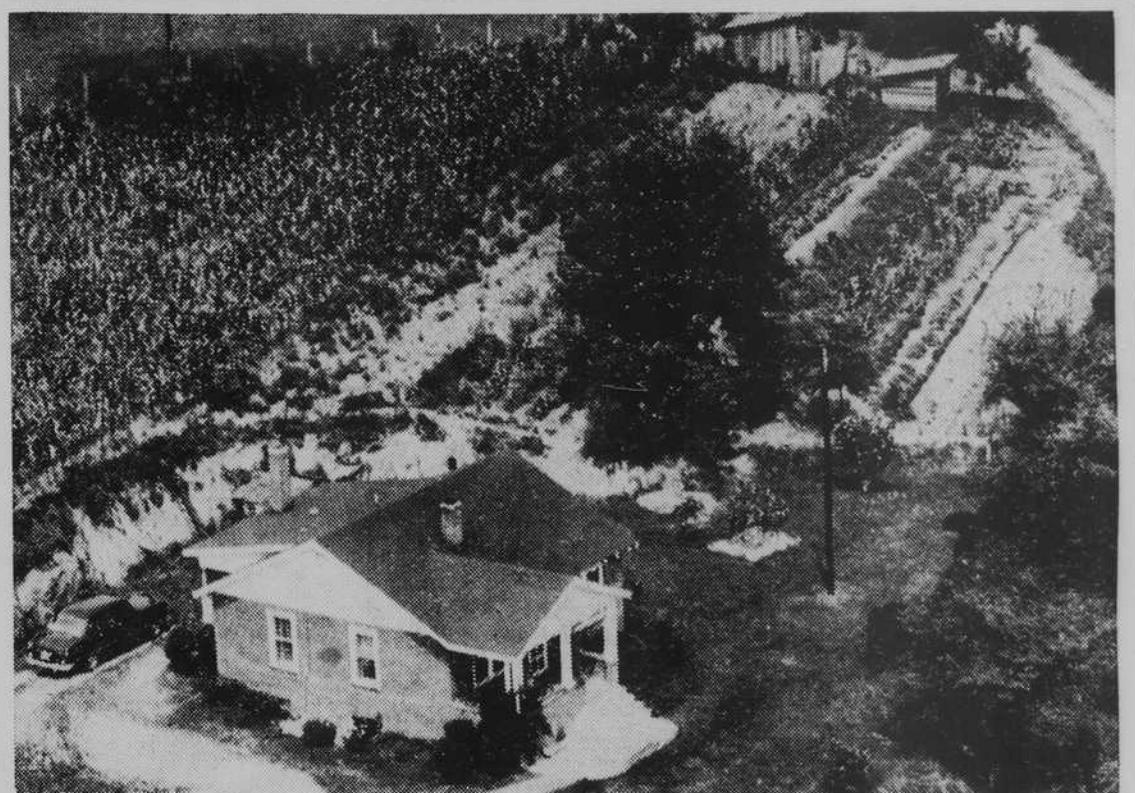
PLUS NEW FIBERGLAS CARRYING CASE

See this new Royal Senior Companion at:

The Transylvania Times

Time Arcade

Dial 2-4111



Carroll Merrell was the first person to correctly identify the "Mystery Farm" published last week as the property of Bly Rogers at Cherryfield. Others who submitted guesses were Mrs. A. E. York and J. S. Simms. Guesses should be submitted in person at The Times office; none can be accepted over the telephone.



Most everybody's happy on a honeymoon! But it looks like this couple will STAY that way. Why? Well, for one thing, they know that SAVING makes the difference between wishing and having. Already they've started an account in this bank. They're all set on a program of systematic savings that will build solidly for their future happiness... together. Why not write your own "success story" in the pages of your savings account book?

Transylvania Trust Company

"THE FRIENDLY BANK"

MEMBER F. D. I. C.