



THE DEMOLISHED CAR, in which two Transylvania high school girls were killed last Wednesday night, is pictured above being inspected by Sgt. E. W. Jones, of Asheville, kneeling, and Patrolman Jack Cabe, who investigated the accident. It can be noted that the front left wheel was driven below the driver's seat in the impact. Killed in the accident, which occurred near the entrance of Pisgah National forest, were Linda Sue Cassell and Judy Evelyn Hutchins, and Corbett Holland was seriously injured. (Times Staff Photo)

Accident In Forest Claims Lives Of Two, First Fatalities In 3½ Years

ASC CHAIRMAN URGES FARMERS SET PRACTICES

Whitmire Cites List Of Six Conservation Needs Are Explained

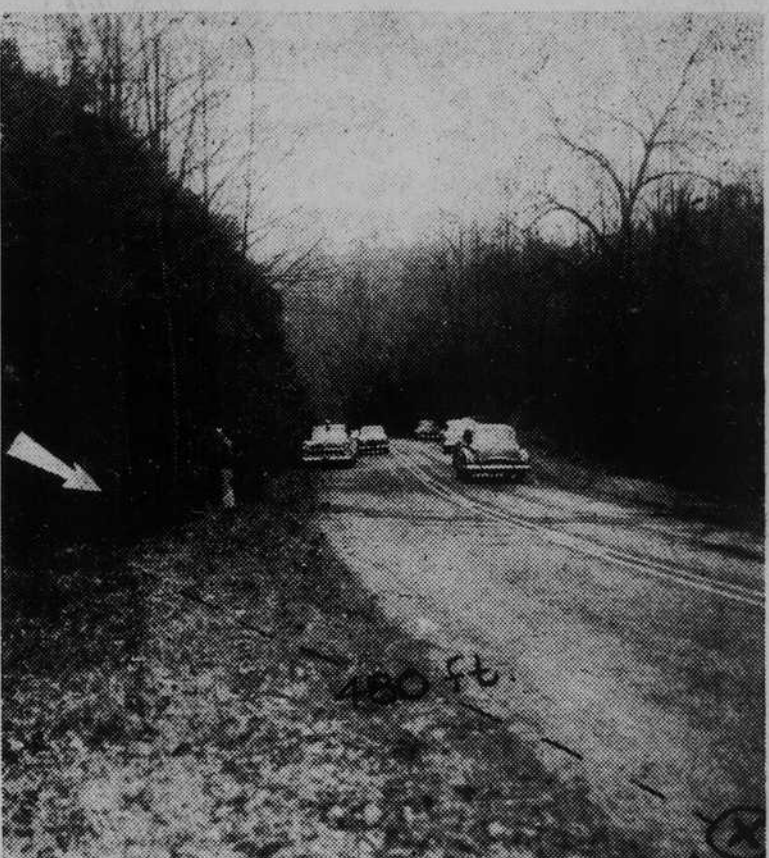
Farmers of Transylvania County who sign up to cooperate in the 1957 Agricultural Conservation Program may select from a list of practices the ones needed on their individual farms to check and control soil erosion, build up stockpiles of soil fertility and make better use of water.

The list includes:

- (1) Seeding permanent pasture or hay crops
- (2) Seeding permanent pasture or hay in a crop rotation
- (3) Applying ground limestone on farmland
- (4) Planting forest trees
- (5) Improving permanent pasture or hay
- (6) Seeding winter cover crops

Explaining how an individual uses the Agricultural Conservation Program on his farm, Marvin W. Whitmire, Chairman of the Transylvania County ASC Committee, said that first a farmer should study his own farm to determine the conservation needs.

Is sheet erosion taking the top — Turn to Page Seven



THE SCENE OF THE ACCIDENT, which claimed the lives of two 16-year old girls last Wednesday night, was viewed by hundreds and hundreds of persons during the past week end. According to investigating officers, the death car traveled some 480 feet from the first skid marks to the sycamore tree, indicated by arrow, where it was finally halted. (Times Staff Photo)

MANY ATTENDED RITES FOR HIGH SCHOOL STUDENTS

Linda Cassell and Judy Hutchins Are Victims, One Person Injured

MAKING INVESTIGATION

Transylvania's outstanding record of no fatalities on its highways in three years and eight months was broken last Wednesday night, when two 16-year old high school girls were killed in the Pisgah National forest, a few hundred yards from the entrance.

The girls were Linda Sue Cassell, a Rosman high school student, and Judy Evelyn Hutchins, of Pisgah Forest, a student at Brevard high school.

Another passenger in the car, who first said that he was the driver, Corbett Holland, 22, of Pisgah Forest, was seriously injured and he was taken to Moore General hospital. His condition on Wednesday of this week was said to be improving.

State Highway Patrolman Jack Cabe, who investigated, said the car, apparently traveling at a high rate of speed, skidded off a curve on U. S. 276 and slammed into a tree. It was completely demolished.

Holland and Miss Cassell were thrown about 12 feet from the wrecked car. Miss Hutchins was lying partially out of the wreck when found.

The two girls were taken to the local hospital, and Miss Cassell died of head injuries shortly after arrival, and Miss Hutchins died some two hours later from spine, head and chest injuries.

The accident was reported by J. B. Brown, who was driving a car in front of the '55 Ford, which was involved in the crash.

Patrolman Cabe quoted James Landreth, a passenger in the Brown car as having seen the accident. — Turn to Page Twelve.

Du Pont Opening Office Here, To Begin Employing Persons At Later Date

Training Center Will Be Set Up In Pickelsimer Building Next Month

The Du Pont company, which will begin construction of a multi-million dollar Silicon plant at Buck Forest in the near future, has opened offices in Brevard in the McMinn building, Harold F. Redmire, the project manager announces today.

A number of key persons, who are connected with construction of the modern plant, are arriving in the community.

Mr. Redmire says it will be a couple of weeks or more before applications will be taken for employment of local people to work on construction of the plant.

A sub-contract for clearing and grading of the property was let this week to McKoy and Helgersen, of Greenville, S. C. This work has already begun and it must be completed before any construction can move forward, it was learned.

Other sub-contracts are expected to be let at an early date.

The Pickelsimer building, located on Caldwell street near the Pisgah Candy company, has been rented by the Du Pont company. It will be used as their initial — Turn to Page Seven

Legislative Round-Up

Highway Dept. Reorganized Before General Assembly

RALEIGH — The legislature has been busy with the reorganization of the highway department during the past week. Also proposed is legislation to separate the State prison system from the highway department. Still being debated is a system for raising the salaries of state employees.

A day by day round-up shows the following proposals being or having been acted upon during the past week by the General Assembly:

Wednesday — An administrative — engineered compromise cleared the way for quick and favorable action on legislation to reorganize the State Highway Commission. Also, the Senate version of the highway reorganized — Turn to Page Twelve

Equalization And Review Board To Meet Next Monday

The board of equalization and Review in Transylvania will meet on Monday morning, March 18th, here at the court house at 10:00 o'clock.

According to C. Lewis Osborne, county accountant and clerk of the board, the purpose of the meeting is for the hearing of complaints in regard to valuations placed on real property.

The meeting will be held in the commissioner's room.

Commerce Office Opens, Influx Is Expected Here

In order to serve the many new people who are expected in Brevard during the coming weeks to work on the Du Pont project and the new addition at the Olin Mathieson Chemical corporation at Pisgah Forest, the office of the Brevard chamber of commerce will open each day from 9:00 a. m. to 1:00 p. m., beginning Monday, March 18th, the

NEW BUS LINE NOW OPERATING

The Jack Bryson Company Is Now Serving The Brevard-Asheville Runs Each Day

The Jack Bryson bus company, of Asheville, is running Brevard to Asheville over Boylston road and at present is making two round trips from Asheville daily. The Asheville bus arrives here at noon, leaves at 12:30 for Asheville; returns to Brevard again at 6:30 in the afternoon and then back to Asheville.

Mr. Bryson took over the franchise of the Smoky Trailways last week, and says he hopes to eventually work out a schedule that will be suitable to Brevard people and at same time make a financial go — Turn to Page Twelve

Will Build Scenic Road In Upper Transylvania, Bids To Be Opened On March 26



DR. FRANK MCGUIRE, Brevard optometrist, was elected president of the Brevard Rotary club at Monday night's meeting. He will succeed Rowell Bosse. (See story, front page, second section.)

The Weather

Temperatures were mostly mild during the past week. The largest portion of the week's rainfall came on Thursday from a mixture of rain and snow.

	High	Low	Pre.
Wednesday	43	34	.07
Thursday	45	33	.42
Friday	40	32	.32
Saturday	43	26	0
Sunday	56	16	0
Monday	69	27	0
Tuesday	69	41	.04

Road Is Familiarly Known In County As The Pin-Hook, Beach-Gap Route

A new three-mile road will open a new area of mountain wilderness to motorists in 1958.

The road will provide a direct route between U. S. 64 near Rosman, and US 276 near Canton. It will traverse the mile-high mountains at Beech Gap on the Blue Ridge Parkway and wind over the headwaters of the French Broad River.

The bids on construction and laying of a stone base will be opened by the State Highway and Public Works Commission at Raleigh March 26.

C. W. Lee, the commission's 14th Division engineer at Sylva, said today the cost, excluding that of paving, is expected to be about \$600,000.

He said the road will open to motorists in the summer of 1958.

It will run between the parkway at Beech Gap on the Transylvania-Haywood County line to Pinhook Gap, tying in with a U. S. Forest Service road there. The existing Forest Service road winds through Balsam Grove Community about 11 miles north of Rosman and joins a paved, two-lane rural road which connects with U. S. 64.

Lee said the new three-mile section would be built by state and U. S. Forest Service road funds.

The road will have a maximum grade of eight per cent.

It was also announced in Raleigh this week that a contract for grading of the Balsam Gap to So-co Gap link of the Parkway would — Turn to Page Twelve

LEGION TO HOLD BIRTHDAY DANCE

Commander Sams Reviews Work Of Organization, Auxiliary Gives Cake

Members of the Monroe Wilson post, No. 88, of the American legion, will join with others of the 17,200 posts across the country in their birthday observance on Friday.

Highlighting the local anniversary will be a dance Friday night, beginning at 9:00 o'clock in the American legion building.

Music will be furnished by Ty Bolling and his orchestra and vocalist, and admission will be by membership cards.

Commander David Sams says the national goal is 3,000,000, and he points with pride to the magnificent accomplishments of the legion during its 33-year history.

During the special ceremonies at the dance, the local auxiliary will present the legion post with a huge birthday cake with 38 candles.

In urging all veterans who have not signed up to do so immediately — Turn to Page Seven

Electrical Power Will Be Off Early Sunday At Rosman

The electricity will be off for one hour, from 6:30 until 7:30 o'clock, Sunday morning, in the Rosman area, Frank Yarbrough, manager of the local branch of Duke Power company, announces today.

Duke customers at Rosman and along the Rosman highway will be affected by the cut off.

The shutdown in electrical power is necessary to meet the growing demands of residential and other electrical customers in the area, Mr. Yarbrough states.

In case of inclement weather, this work will be done at the same time the following Sunday. — Turn to Page Twelve

CALENDAR OF COMING EVENTS

- Thursday, March 14 — Fortnightly club meets with Mrs. J. C. Wike, 3:30 p. m. Mathasian club meets with Mrs. C. E. Buckner, 3:30 p. m. College basketball banquet, college cafeteria, 5:45 p. m. Masonic meeting in Temple, 8 p. m.
- Friday, March 15 — Brevard Garden club meets with Mrs. R. H. Stamey, 3:30 p. m. Kiwanis club meets at Gaither's, 7 p. m. American Legion dance, 9 p. m.
- Saturday, March 16 — VFW auxiliary bake sale, 9 a. m., in front of Belk's.
- Sunday, March 17 — Attend the church of your choice.
- Monday, March 18 — Board of equalization and review meets in commissioner's room, 10 a. m. Rotary club meets at Gaither's, 7 p. m. 4-H electric meeting, Masonic temple, 7:30 p. m. Brevard High School P-TA meets, 8 p. m.
- Tuesday, March 19 — Eastern Star meets in Masonic temple, 8 p. m.
- Wednesday, March 20 — Evening unit of League of Women Voters, home of Mrs. H. C. McDonald, 8 p. m.



TWO TRANSYLVANIA GIRLS, who lost their lives in an accident near the entrance of the Pisgah National forest last Wednesday night, are pictured above. At the left is Linda Sue Cassell, Rosman high school student, and at the right, is Judy Evelyn Hutchins, of Pisgah Forest, and a student at Brevard high school. Large crowds attended the last rites for the two girls last Friday and Saturday afternoons.