

TRANSYLVANIA—
An Industrial, Tourist, Educational, Agricultural and Music Center. Population, 1960 Census 16,372. Brevard Community 8,500. Brevard proper 4,967.

THE TRANSYLVANIA TIMES

A State And National Prize - Winning A.B.C. Newspaper

TRANSYLVANIA—
The Land of Waterfalls, Mecca for Summer Camps, Entrance to Pisgah National Forest and Home of Brevard College and Brevard Music Festival.

Vol. 79—No. 27

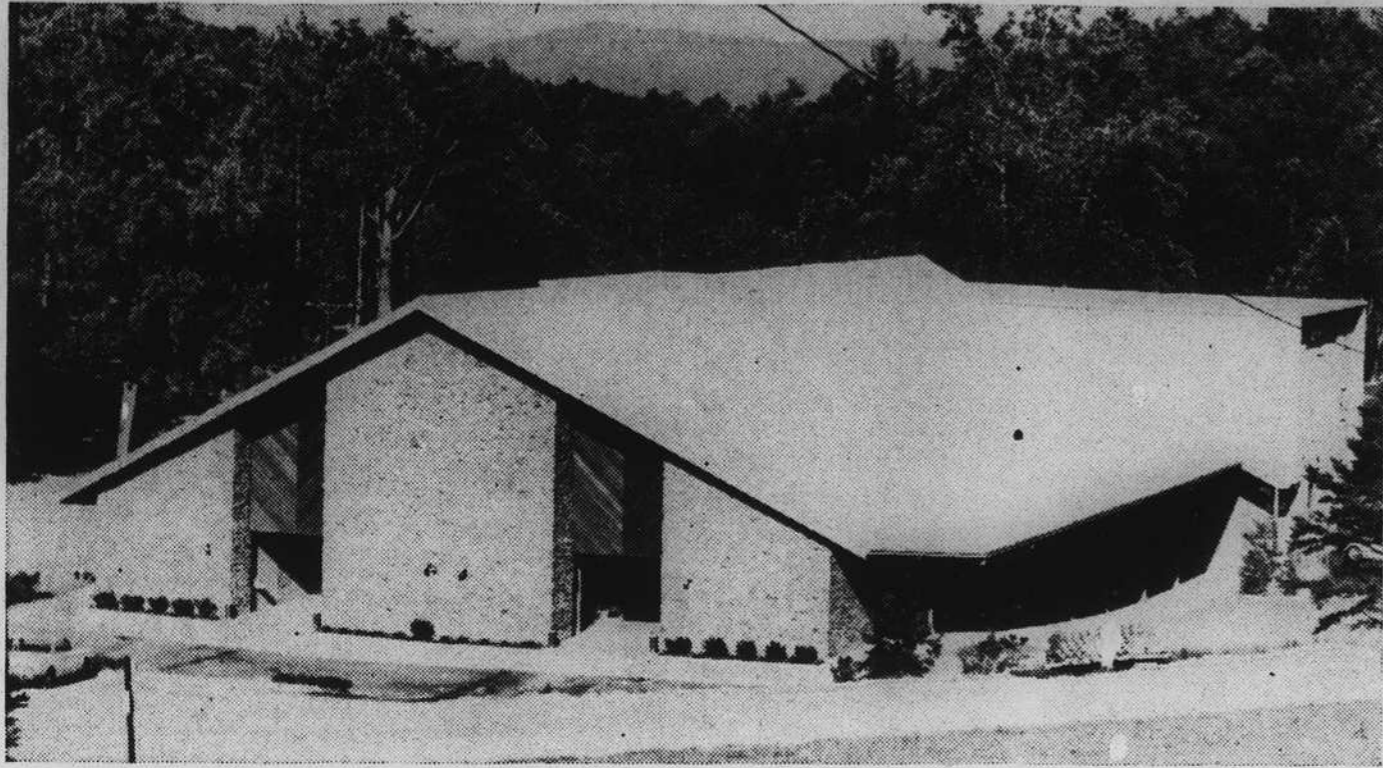
PAID AT BREVARD, N. C. ZIP CODE 28712

BREVARD, N. C., JULY 7, 1966

PRICE 10c

★ 30 PAGES TODAY ★

PUBLISHED WEEKLY



THE ACOUSTICALLY PERFECT Whittington-Pfohl auditorium at the Brevard Music center is expected to be filled to capacity for several of the

concerts this week. Noted artists will appear on the opening programs as the 30th season begins on Thursday night.

Opening Thursday Night

Famed Artists To Appear On Music Center Concerts

Once again, as in seasons past, the rocks and hills surrounding Brevard will echo with the sounds of voices and instruments. For the 30th consecutive season, the Brevard Music Center will be producing a potpourri of musical entertainment from grand opera to American folk music. If last season was any indication of things to come, this should be the most impressive as well as successful year in the entire three decades of the center's existence.

The 1966 season officially opens Thursday evening, July 7th, with a recital by members of the professional faculty of the Brevard Music Center. Featured on that program will be violinist James Cesar in a performance of a Brahms violin sonata, Frank Little, baritone will sing the "Dichterliebe" (song cycle) of Robert Schuman. Ronald Lemon, French horn, will perform a contemporary sonata for horn, by Holmes. Sal Vennitelli, violinist, plays the Hindemith sonata for viola.

The Brevard Music Festival will run for a full seven weeks during the 1966 season, featuring internationally famous stars of the concert stage as guest artists.

Headlining the first week-end which begins Friday, July 8th, will be pianists Thomas Brockman and Ernestine —Turn to Page Five

New Hours Announced

Savings & Loan Paying Over \$250,000 Dividends

Brevard Federal Savings and Loan Association paid record dividends last week.

President Jerry Jerome announced today that Brevard Federal paid out over \$250,000.00 to more than 5,000 mem-

bers at the conclusion of the June 30th dividend period last week.

The total assets of the Association have reached a record high of over \$5 million.

Mr. Jerome also stated that Brevard Federal would start observing new hours on Saturday, July 16th.

"The observance of new hours is another progressive step in our efforts to better serve the people of Brevard and Transylvania county," Mr. Jerome stated.

Starting Saturday, July 16th, Brevard Federal's new hours will be: Monday, Tuesday and Wednesday, 9 a.m. to 3 p.m.; Thursday, 9 a.m. to 5 p.m.; Friday, 9 a.m. to 6 p.m.; closed all day Saturday.

The directors and officers of the association are:

Jerry Jerome, president; Jerry H. Jerome, exec. vice president; J. I. Ayers, vice pres- —Turn to Page Six

Weather

Moderate temperatures were enjoyed by residents and visitors in the Brevard area during the month of June.

The final seven days during June were the hottest for the month, and June averaged out at 82.4 degrees for a high, with the mean low temperature for the month being 53.2.

June's actual high temperature in Brevard occurred on the 26th when the mercury climbed to 91. The low point of the month was on the 2nd, with a low of 35 degrees.

Total rainfall for the month was 3.23 inches.

The past week's temperatures and precipitation follows:

	High	Low	Prec.
Wednesday	89	59	0.00
Thursday	89	60	Trace
Friday	75	63	0.40
Saturday	78	63	0.35
Sunday	85	64	0.83
Monday	86	60	0.00
Tuesday	85	59	0.10

Look Inside..

Sports—page 4, first section

Editor's Corner—page 5, first section

Editorials—page 2, second section

Miss Brevard feature — front page, third section

Women's news—page 6, second section, and page 3, section four

Classified ads—pages 2 and 3, first section

Welcome To County Is Extended All Campers And Summer Visitors

Issue Of Times This Week Has Camps Featured

With all the 18 organized summer camps in the area reporting capacity enrollment, officials of the town and county and heads of civic organization joins hands in issuing a most cordial welcome to the campers, summer visitors and others here for a vacation this season.

It is with a glad hand of friendship that they roll out the welcoming mat to this beautiful land of lakes and waterfalls, which is also recognized as a "mecca for summer camps."

Through the columns of The Transylvania Times this week many merchants and others are welcoming the campers and other visitors to town. Editor John Anderson urges all readers to especially note the write-ups on the camps.

Best Year

From all indications, this summer will be a peak year in tourist business, and already thousands of cars are seen in the great Pisgah National Forest, as people from the lowlands come up to the mountains in an effort to escape the heat and to see the famed wonderland of nature.

Drug stores, eating establishments, hotels, motels, inns, etc., in the county, report a sharp increase in the tourist business.

Donald Lee Moore, chairman of the Transylvania county board of commissioners, Raymond F. Bennett, mayor of Brevard and J. Stanley Meares president of the chamber of commerce, join hands in welcoming all visitors, and they will be glad to give information or other assistance through the office of the commerce group, which is located in the library building.

Transylvania has long been noted as an agricultural, industrial, educational and cultural center, and during recent years thousands of outsiders have come here to attend the concerts at the Brevard Music center.



BREVARD COLLEGE ALUMNI plan a program of assistance to the local educational institution during the coming school term, and officers of the group are pictured during a recent meeting. From left to right,

they are: Jerry Stamey, class of '57, president; Mrs. Henry Reddick, also of the class of '57, secretary-treasurer; and Thomas McCrary, class of '52, vice president.

Objectives Cited

College Alumni Group Plans Aid Program For Next Term

Projects for the 1966-67 school year were selected at a recent meeting of the Transylvania County Chapter of the Brevard College Alumni association, according to Jerry Stamey, president of the local group.

"Purpose of the adoption of a yearly project program," said Mr. Stamey, "is to mobilize behind the college the full strength of organized alumni

in all areas where we can be useful to our alma mater."

Mr. Stamey announced that for the new library, now under construction, the Transylvania association will present a reference work to be selected by the college librarian. Funds for the purchase will come from contributions.

Alumni who are interested in participating in this project

should make checks to Transylvania Alumni association and mail to Mrs. Henry Reddick, secretary - treasurer, route 1, Pisgah Forest.

"We are more interested in having a large number of alumni contribute than we are in having a few make large contributions," said Mr. Stamey.

"Because transportation from —Turn to Page Five

Brief History Given

Brevard Jaycees Making Plans For Anniversary Banquet, 27th

The 25th anniversary of the founding of the Brevard Jaycees club will be celebrated this month highlighted by a banquet on July 27th.

No doubt, the group will also be celebrating the recent election of a North Carolina Jaycee to the office of National President. Bill Suttles, of Marion, was

elected at the convention last weekend in Detroit, Mich.

In the interest of keeping the public informed of the purpose and work of the Junior Chamber of Commerce, the following is an introduction to the history and background of the national —Turn to Page Seven

Closing Saturdays

Banks To Begin Operating On A Five-Day Week Basis

Banks in Brevard and the Brevard Federal Savings and Loan association have been granted authority to operate on a five-day week basis.

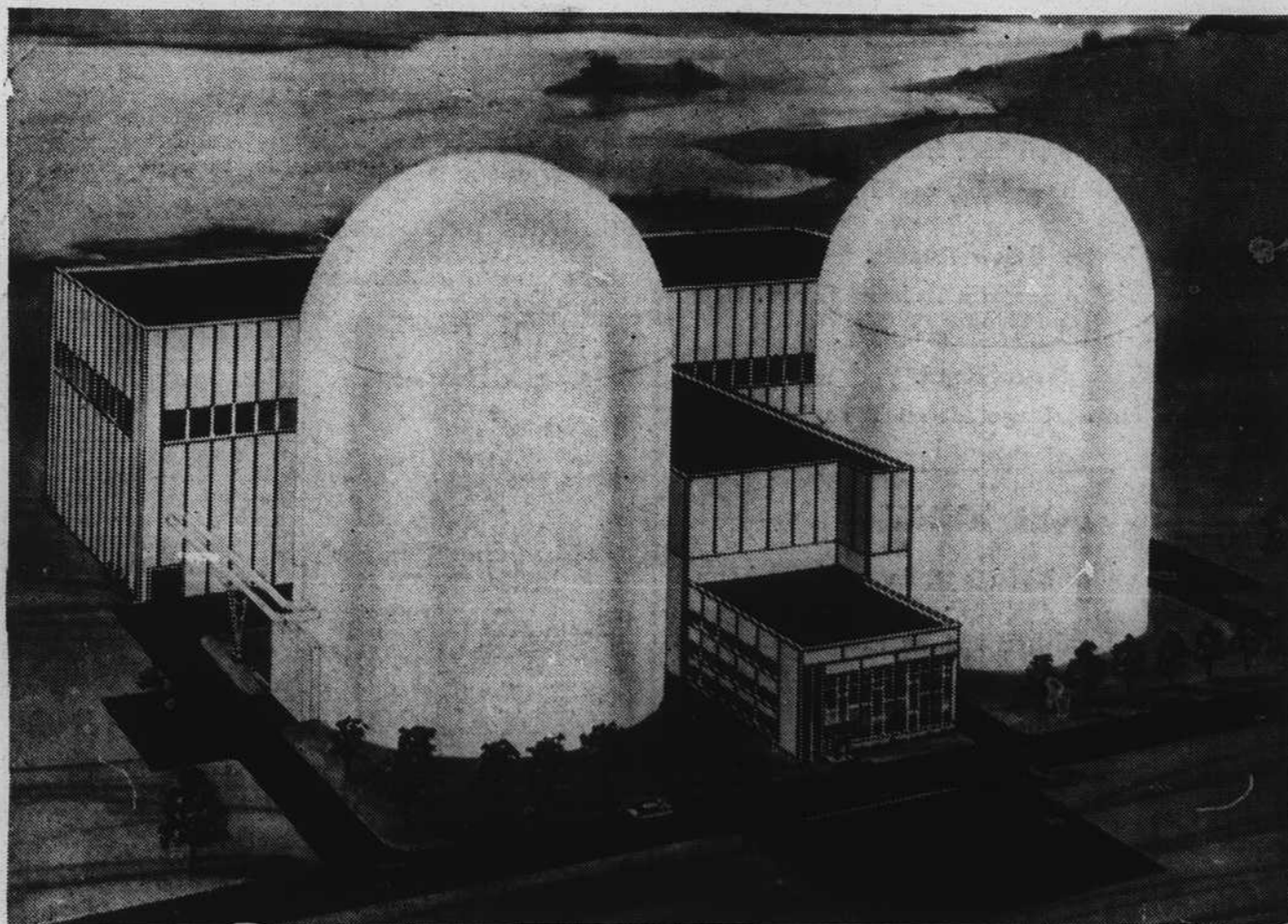
Effective July 16th, the banks and the Savings and Loan association will be closed on Saturdays.

Actually, the Brevard banks will be open to the public three more hours each week under the

new schedule than they were under the old one.

In Rosman, the bank will be open an additional hour each week.

The new banking schedule will begin on Monday, July 11th, and it should be noted that the hours next Wednesday, July 13th, will be from 9:00 a.m., un- —Turn to Page Seven



POWER PLANT—This is an artist drawing of the large atomic powered steam-electric generating station Duke Power company proposes to build on Lake Keowee in the company's proposed Keowee-Toxaway Project. The plant would have two

nuclear reactors and total cost of the generating station would be \$207 million. The entire project will exceed \$700 million. See complete story on page five, section four.

During 1965

Brevard Du Pont Plant Put Over 4 Million Into Economy

The Du Pont Company's photo products plant at Brevard put more than \$4 million into the economy of the Brevard area last year, Jack C. Dense, manager, announced today.

Du Pont's Brevard payroll was \$3,877,467 while purchases of goods and services for the plant from 72 Brevard firms

amounted to \$195,000.

In addition, 202 North Carolina suppliers outside Brevard were paid \$401,000 for goods and services for the plant, whose principal products are medical and industrial x-ray films.

Mr. Dense said that the Bre- —Turn to Page Four

Program Highlights

WPNF Adds Two New Public Service Features To Log

WPNF invites listeners to hear two public service features now being broadcast regularly on the station.

"The Army Hour," heard each Saturday afternoon at 2:05 p.m., features overseas reports from South Viet Nam as well as other points where Army troops are on duty.

"Bring Back The Bands," featuring the biggest name bands of the day, is heard Saturdays

at 3:45 p.m. This outstanding show is presented in cooperation with the Department of Health, Education and Welfare, and presents latest news from that governmental department dealing with Social Security, dependency payments, etc.

Other Programs
The schedule of the Farm and Home hour for the coming week is as follows: Thursday, Station —Turn to Page Three