

New Library Going Up On Local Campus

Constructing Historical Complex In "Cradle Of American Forestry"

Blue Devils, Tigers Away From Home

The Rosman Tigers and the Brevard Blue Devils will both be facing tough competition this Friday night when they take on powerful non-conference opponents.

Both the Tigers and the Blue Devils will be facing undefeated opponents on the road, with Rosman traveling to East Yancey and Brevard venturing to Asheville to take on Lee Edwards.

The Maroons of Asheville have chalked up wins over both Erwin and Pisgah (Canton), while the Panthers of East Yancey have impressive victories over Happy Valley, Tenn., Mars Hill, and Cane River.

Rosman Coach Bill Cathey was pleased with the Tigers' showing in their impressive 26-0 waltz over the Lee Edwards "B" team last week, and he feels that they can take East Yancey "if we play the kind of ball that I think we can."

Cathey also stated that a lot will depend on the physical condition of Dan Hall, who played such a fine game last week. He sustained a back injury that might keep him out of action against the Panthers.

"We'll live or die on our pass defense Friday night, because they have a quarterback who can really thread the needle," Cathey concluded.

Kick off time at Burnsville has been set at 8 p. m.

The Brevard Blue Devils might be without the services of quarterback Mike Morris as they go against Asheville Friday night.

If Morris can't go, Coach Doyce Cannon has indicated that he will go with co-captain Charlie Peterson, who switched from end to fill in for the injured quarterback against Shelby last week.

The other Blue Devils, with the exception of Vincent Lynch, are all ready to go against the Maroons.

Lee Edwards will be counting on the fine running capabilities of Otis McIntosh, Charles... —Turn to Page Four

To Entertain, Inform

"Science For You" Is Carried In Each Times

The first article of a new feature series, "Science For You," designed to inform and entertain both children and adults, is carried today in The Transylvania Times.

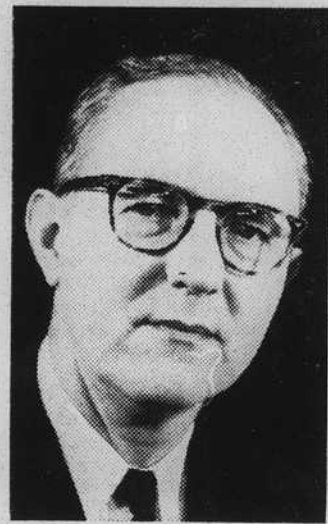
The new feature is sponsored by the Olin Mathieson Chemical corporation at Pisgah Forest in cooperation with The Times.

A science stunt, graphically illustrated, will be carried each week. It will demonstrate a basic science principle.

Children can learn about science and have fun performing the experiments at home by using common household items. No laboratory equipment is required.

Adults will discover that some of the seemingly impossible, but actually quite simple, stunts will amuse friends at parties.

The author of the series is Bob Brown, of Asheville, who is well known in Transylvania for his "Science Circuses" which have been seen regularly in the schools here.



Six Buildings "Out Of Past" Are Going Up

The United States Forest Service has started major construction of the historical complex in the "Cradle of Forestry in America" at the Pink Beds in the Pisgah National Forest.

Six buildings and a quarter-mile foot trail are now being built.

Construction is being done by the Pisgah Ranger district and the Schenck Job Corps center.

The buildings being constructed at the present time are:

- A commissary
- Student quarters
- Schenck's offices
- Hiram King lodge
- Black Forest lodge
- A blacksmith shop.

These buildings are being built as near as possible to the original structures. An early writer quaintly described these rude cabins as the "connecting link between the woodpile and a house." Perhaps he was right. The pioneer who had to clear land, plant a crop, and raise a house at the same time, was not apt to grope for architectural niceties.

The cabins were built as solid log pens, and after erection, doors and windows were cut out as desired. The one room was a common room shared by all the family for all purposes. On one end, a fireplace provided light, warmth, and cooking facilities.

Sometimes two - room cabins were built without breezeways, as was the first Hiram King home in the Pink Beds. Later, Mr. King moved to larger quarters and turned this structure into a barn. Still later, Dr. Schenck used one end of the structure for his office.

"Black Forest" lodges were built for Dr. Schenck's forest rangers to live in. The lodges were of good construction; a chimney in the center to provide heating in the living room and a flue for the kitchen. Downstairs, the lodges had a "sitting room, kitchen and piazza." The up... —Turn to Page Three

Round-Up Made

College To Open With Record Enrollment, Much Building

Long List Carried

Many Students In Colleges From Brevard And County

The vast amount of construction work is moving along splendidly on the campus of Brevard College, and the new Lena Sue Beam hall, a dormitory that will accommodate 180 students, will be ready for occupancy when the 1966-67 term opens.

A record enrollment of more than 600 students are expected this fall.

New students will arrive on Sunday, Sept. 25th, and classes will begin on Thursday, the 29th.

The cost of the beautiful new dormitory is \$690,000, and C. E. Cochran is the new contractor.

The building is named in honor of Mrs. C. Grier Beam, of Cherryfield, whose husband is a member of the Board of Trustees.

The new Beam administration building was dedicated last May.

Work is progressing nicely on the new library building, President Emmet K. McLarty also reports.

It is expressly designed to be an adjunct to the teaching process, containing all the conventional facilities. Among these are: seminar rooms, group study rooms, faculty research cubicles, a small audio-visual auditorium, exhibiton walls, etc.

The new library is being constructed by the Burke Lumber company, of Morganton, at a cost of \$46,678.

The present library will be renovated into a Student Union, —Turn to Page Two

Vance Jackson
U. N. C. Graduate School - Charles Farris Himes; Susan Farley

U. N. C. State, Raleigh - Beecher Carl Allison; Robert Huggins; John K. Tinsley; William Long, Jr.; Steve Case; Ricky Skerrett; Charlie Carter; Jim Jones

U. N. C. Greensboro - Anne Lankford; Margaret Winchester

U. N. C. Law School - Jon E. Anderson; Peter Best

Central Piedmont College, Charlotte - Mary Ina Anderson
Pheiffer College - Sandra Bennett; Janice Rahn

Davidson College - Marshall Feaster; Tommy Bryant

Davidson College - Walter Estes

Clemson University - Connie Gilstrap; Dickie Edwards

Furman University - Marla Hooper; Mary Louise Dale

Seminary, Newton Centre, Mass. - Tom Hall

Berea College - Sharon Richards; Judy Byran; Nancy McCall

Salem College - Elaine Spicer —Turn to Page Four

Many Brevard and Transylvania county students are now enrolled in colleges and universities in the south and throughout the nation.

The Times is happy to report that a large number from this group is receiving Brevard's prize - winning weekly newspaper.

The staff of The Times has made a survey to determine just how many town and county students are enrolled in college, and a long list is carried this week.

"Naturally, we couldn't get the names of all, but we will carry those in future issues if they will report to us where they are in school," the editor said.

The list compiled to date is as follows:

U. N. C. - Gene Ramsay; Gary Himes; Bob Colwell; Sharon DeMuth; Jack Bennett; Lynn Strickler; Rock McKinnish; Jim Fortune; Lloyd Fisher; Larry Lea;



By - Fred Reiter

Temperatures began to taper off during the past week in Brevard, as more fall-like weather arrived on the scene. High temperature for the week was only 81 degrees, while the low during the period was an even 50 degrees. No rain fell during the week until the final two days. Average high temperature for the week ended Tuesday was 77 degrees, while the average low was 53 degrees.

The weather bureau, in its long-range forecast for the area, said temperatures would average slightly below normal, which is about 78 and 54 for Brevard. There should be mild days and cool nights, with about one-half inch of rain.

The week's temperatures and precipitation follows:

	High	Low	Prec.
Wednesday	80	56	0.00
Thursday	79	50	0.00
Friday	81	51	0.00
Saturday	81	52	0.00
Sunday	80	51	0.00
Monday	72	52	0.34
Tuesday	64	58	2.10

Demos Open Headquarters

Theodore E. Reid, chairman of the Democratic executive committee of Transylvania county, announces that headquarters will be opened on Saturday, September 17th, at 2:00 o'clock —Turn to Page Two

My Little Girl



(Editor's note: This moving appeal to drivers by a father is especially pertinent as schools are beginning. Other fathers will share the same thought and hopes.)

Dear Mr. Driver:

Today my daughter, who is five years old, started to school. She wore a dark blue dress with blue socks. Her cocker spaniel, Scoot, sat on the front porch and whined his canine belief in the folly of education as she waved goodbye.

Tonight, we talked about school. She told me about her teacher who has eyes in the back of her head... about the trees in the school yard, and about the little girl who sits in front of her... the little girl with the yellow curls, and the —Turn to Page Three

Health Officials Announce

Will Distribute Fluoride Tablets In Transylvania School System

This fall the Transylvania county health department in cooperation with the Transylvania county Board of Education is beginning a program of distribution of fluoride tablets throughout the elementary schools of this county.

To the departments our knowledge, Transylvania is the first county in the state with such a program.

According to local health officials, the safety and value of fluoride in building better

teeth is well established, and it is hoped that parents of children from grades one through six will take advantage of this inexpensive dental health measure.

The small white tasteless tablet will be dispensed daily at the school to those children whose parents give their consent on forms that are being sent home this following week.

This tablet contains no vitamins and is not intended as a —Turn to Page Two



Lena Sue Beam Hall Being Completed At The College