

WNC Chemical Engineers To Meet Thursday Night At 6:30

The Western North Carolina Section of the American Institute of Chemical Engineers will meet Thursday, February 23, at the Seasons restaurant (in the Downtowner Motel) in Asheville.

The social hour will begin at 6:30 p. m. and the dinner at 7:30 p. m.

Guest speaker for the evening will be Robert M. Teague, a systems engineer with International Business Machines Corporation.

The program topic is "Application of Digital Computers

The average old-age assistance grant given to North Carolinians in October was \$56.11 — less than \$2 a day for food, shelter, and clothing.

in Process Control." As continued advances in the fields of computer technology and process control make it increasingly difficult for the busy chemical engineer to stay abreast of the latest developments available for his use in process industries, this program provides a valuable opportunity to review some current "state-of-the-art" control principles and digital computer techniques.

Interested persons should contact their area representative for further information:

Northrop-Carolina — Tom Creley

Champion — Dan Tate
Olin — Bill Kelly
Enka — George Caughman
Du Pont — Ray Miller
Clemson — Dr. Littlejohn

Arthur Shelton Completes Army Course, Ft. Dix

Army Private Arthur Shelton, 19, son of Mr. and Mrs. Coy Shelton, Rosman, completed a cooking course at Ft. Dix, N. J., Feb. 3.

During the eight-week course, he was trained in cake and pastry baking, meat cutting, and learned to prepare and serve food in Army mess halls and in the field.

His wife, Peggy, lives at 1707 Freeman Mill Court, Greensboro.

The maximum amount of money a person can receive from welfare funds is \$104 per month. This is less than the maximum amount available in 1961.



"Hmph... no wonder science says the human body is 90 per cent water..."

High School P-TA To Meet Monday Night

The Brevard high school's P-TA meeting for February to be held February 27th at 7:30 p. m. in the auditorium will feature a skit "The Youth and the Law" starring a number of students in Mrs. James O. Smeaton's classes.

The skit, written by Carol Coleman, Hall Parrish and Mrs. Smeaton, involves three juvenile court scenes where teenagers are being charged for crimes that were committed as an outlet for their frustration and boredom.

Those playing the various roles are Carol Coleman, Nena Lyda, Debbie Carr, Shirley Doc-

Try-Outs For Next Little Theatre Play Set Feb. 28

Try-outs and casting for the third Brevard Little Theatre production of the season will be held February 28th at 7:30 p. m., in the Transylvania Community Center.

The play "Love Rides The Rails" or "Will the Mail Train Run Tonight?" is a thrilling melodrama which promises to be fun for the actor and the viewer.

There are parts in the play for five women and seven men as well as numerous extras as railroad workers and men and women patrons of the cafe. The characters are the typical mel-

odrama types—the aged, very pious, widow, her sweet demure daughter, the traditional melodrama villain, the honest and upright hero, a dance hall hostess and a French maid.

Maggie Masters is director of the play and Ruth Hunter will serve as music director. The play is scheduled to be produced April 7th and 8th.

The first armor encounters of WWII involving U. S. forces were fought on Luzon in the Philippines in 1941-42 by the 192d and 194th Tank Battalions composed entirely of National Guardsmen from seven different states.

When you think of prescriptions, think of VARNER'S, adv.

PEARLMAN'S furniture stores

On January 9th Fire Swept Through The Cleveland Chair Co. Causing Heavy Loss To Warehouse of Chairs... Pearlman's Bought Hundreds of Chairs and Are Offering Them For Sale At Only Pennies On The Dollar...

Insurance Companies Loss IS YOUR GAIN!

Loss Heavy At Chair Factory

Officials are investigating the possibility of arson in blazes early Sunday which destroyed or damaged some 10,000 upholstered chairs at the Cleveland Chair Factory.

The officials said four separate fires broke out at the main plant and the warehouse, which was "packed to the ceiling with crated chairs."

Two of the fires started in the warehouse and two began in the main plant, a block away.

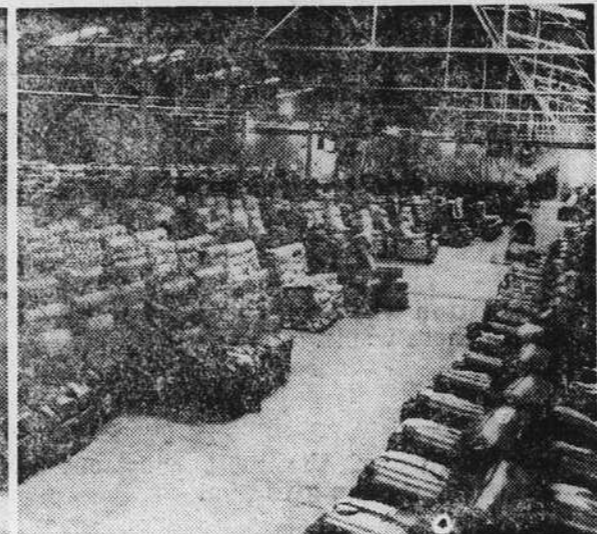
Firemen battled the for six hours before them under control.

No estimate immediate

Reprint from Cleveland Banner



View of Clean-up Operation



Warehouse View of Chairs

Damage Is Minor... Hardly Noticeable... Your Choice Styles... and Colors Swivels, Recliners... Rocker Recliners

Before the ashes cooled Pearlman's buyers were called to the scene to make an offer on the remaining salable stock of chairs. We got them at our price and immediately removed the chairs to the safety of our Asheville warehouse. Only this rare and special situation makes it possible for us to offer you such bona-fide savings. Get in early, you'll find a \$50 chair for only \$24.88... a regular \$60 Vinyl recliner for only \$29.87... even a few \$190 reclining chairs at a \$100.70 savings.



Exactly As Shown

Regular \$90.00... VINELLE 3-Position RECLINER With Extra Thick Foam Rubber Back

The ultimate in recliner relaxation... this Kingsize VINELLE covered recliner. Oversizes foam filled pillow back with tough "no-sag" spring supported seat—spells extra comfort—extra years of superior service. Modern design biscuit tufted back and roll arms extends to 67 inches for the maximum in reclining comfort. Crack proof VINELLE upholstery will wear like leather. Choice of colors.

\$48⁷⁵

Pay \$5.00 Monthly

PEARLMAN'S

72 W. MAIN ST. DIAL 883-5210 BREVARD, N. C.

SAVE ON YOUR CHOICE FROM OUR COMPLETE SELECTION OF CHAIRS Of All Styles And Cost! PRICED FROM 22.95



Reg. \$50⁰⁰

Exactly As Shown

Colonial Swivel Rocker In Attractive Print Color

SAVE \$25.12

Charming Colonial accent chair, with the kind of warm seating comfort you expect. Hi-back styling, with maple finished wing back styling. Maple wood arms. Ruffle skirted base. Tough kiln-dried hardwood frame with tough metal rocker mechanism. Choice of Green or Beige Colonial print cover.

\$24⁸⁸

Pay \$5.00 Monthly