

MAKES SUCH GOOD SCENTS!

# TURKEYS



U.S. GOVERNMENT GRADE "A"

**Toms** 29¢ lb. **Toms** 33¢ lb. **Hens** 35¢ lb.

10 to 24 lb. SIZE      UNDER 19 lb.      10 to 14 lb. SIZE

U.S. GOV'T. GRADE "A" TURKEY PARTS

- Hindquarters . . lb. 25¢
- Turkey Backs . . lb. 19¢
- Drumsticks . . . lb. 29¢
- Turkey Wings . . lb. 29¢
- Turkey Thighs . . lb. 33¢
- Boneless Thighs lb. 43¢
- Breast Quarter lb. 49¢

WHITE & DARK TURKEY

# ROAST \$1.99

2-lb. SIZE

THRIFTY-MAID

# CRANBERRY SAUCE

# 2 12-oz. CANS 39¢



## PINKY PIG SLICED BACON

1-LB. PKG.

# 58¢

LAND O' SUNSHINE . . . Quarters . . . Limit 4 with other purchases

## BUTTER 1-lb. pkg. 69¢

Grade "A" Large Palmetto Farm

## EGGS 2 dozen 79¢

RED BAND plain or self rising

## FLOUR 5-lb. bag 57¢

Thrifty-Maid Whole Kernel VAC PACK

## CORN 2 12-oz. cans 39¢

## THRIFTY-MAID SLICED or CRUSHED PINEAPPLE . . 4 No. 2 1/2 CANS \$1

## SUNSHINE PICKLED PEACHES . . 2 28-oz. JARS 69¢

## ASTOR or GREEN GIANT SMALL PEAS 2 No. 303 CANS 49¢

## PALMETTO FARM QUARTERS MARGARINE . . 5 1-LB. PKGS. \$1

## GREEN GIANT Niblets CORN 2 12-oz. CANS 43¢

## THRIFTY-MAID GREEN LIMA BEANS 2 CANS 39¢

## THRIFTY-MAID WHOLE and CUT SWEET POTATOES . . 4 No. 2 1/2 CANS \$1

## Philadelphia or Borden's CREAM CHEESE 3 8-oz. pkgs. \$1

Palmetto Farm

## PIMENTO CHEESE lb. cup 69¢

Palmetto Farm french onion, bleu cheese, garlic or clam

## PARTY DIPS . . . 8-oz. cup 39¢

Borden's "Big Ten"

## BISCUITS . . . 2 for 39¢

LAY'S OR SELECTO (CRY-O-VAC "Hock-Off")

# HAMS

## 10-14 lb. size WHOLE OR FULL HALF SMOKED LB. 59¢

FRESH WHOLE OR SHANK HALF PORK, 10-14-lb. SIZE

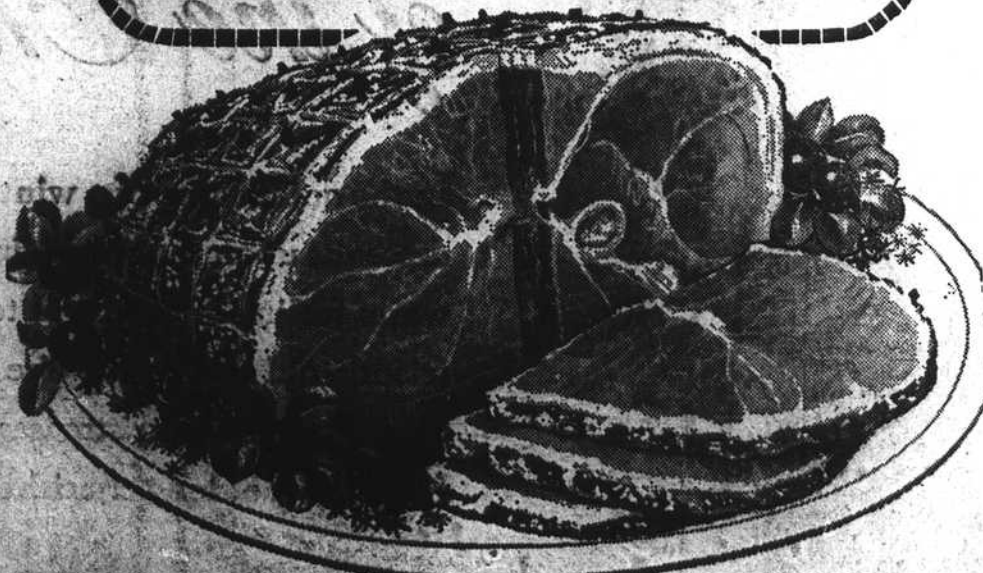
## HAMS . . . lb. 59¢

TALMADGE FARMS WHOLE or CRY-O-VAC HALVES COUNTRY

## HAMS . . . lb. 99¢

SELECTO, CANNED

## HAMS . . 3-lb. size \$2.29



## DELUXE FRUIT CAKE 3-LB. \$1.09

## DIXIE DARLING SANDWICH BREAD 1 1/2-LB. LOAF 21¢