

The Land of Waterfalls, Mecca for Summer Camps, Entrance to Pisgah National Forest and Home of Brevard College and Brevard Music Festival.

A State And National Prize-Winning Home Town Newspaper

REPRODUCTION OF

All Matter Herein Is Prohibited Without The Express Consent Of The Owner.

Vol. 53—No. 48

SECOND CLASS POSTAGE PAID AT BREVARD, N. C. ZIP CODE 28714

BREVARD, N. C., THURSDAY, NOVEMBER 26, 1970

ES TODAY

PUBLISHED WEEKLY

Library
WCTC
Mooney, Jr.
Carl
Box 2481—WCC
Box 2481—WCC



TRACKING FROGS IN SPACE — This is a nighttime photo of the large 85-foot tracking antenna at the Rosman STADAN station. The inset, lower right, is a picture of Ted Gohrs inside the station, operating the antenna. The present operation is tracking NASA's O F O spacecraft, an experiment orbiting two live bullfrogs in a study of how man's inner ear helps him keep his balance.

Rosman is one of the prime stations receiving data from the satellite as it passes over this area. The antenna, which is 85 feet across the dish and weighs some 300 tons, can track satellites far out in space. The Rosman station is linked with the Goddard Space Flight Center at Greenbelt, Maryland, which has the responsibility for scientific exploration of space in the cis-lunar region.

Rosman Tracking Station Now Receiving Data From Space Frogs

Experiment Is Studying Human Ear And Balance

Two live bullfrogs have been orbiting the Earth every 1 and 1/2 hours since launch on November 9th in an experiment aimed at providing new information on how man's inner ear helps him keep his balance.

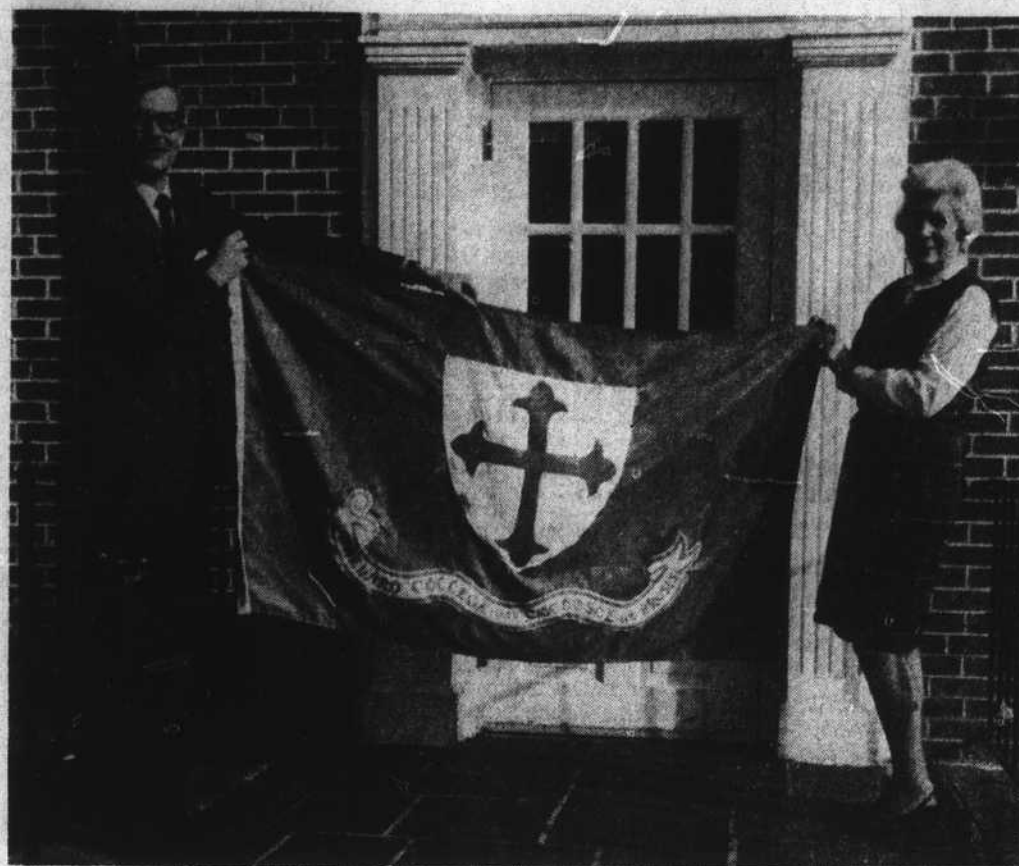
The NASA Tracking Station at Rosman has been one of the prime stations receiving data from the satellite as it passes over this area. Bob Allison, Operations Manager, has indicated that no problems have been encountered in the support of O F O satellite passes at the station.

After several hours in orbit, the frogs were reported in good condition and the spacecraft was transmitting scientific data on the functioning of their otolith sensor cells. A frog's otolith functions much like that in man's inner ear.

The National Aeronautics and Space Administration's Orbiting Frog Otolith (O F O) satellite was launched at 1 a. m. EST on the 9th from NASA's Wallops Station, Wallops Island, Va. Riding piggyback on the Scout launch vehicle was another spacecraft with radiation and meteoroid experiments. The two satellites separated about nine minutes after launch.

The frogs have been monitored during the past week alternately in weightless conditions and periods of partial gravity created by spinning them in the centrifuge that houses them. Fifty revolutions per minute provides a one-half "G" acceleration condition. One "G" is the force of normal gravity on Earth.

Electrodes implanted in the vestibular (inner ear) nerves —Turn to Page Six



BREVARD'S BETSY ROSS, Mrs. Mabel Alderman, is pictured above right, presenting the beautiful Brevard College flag that she made to Dean Grady H. Whicker, left, of the college's administrative staff. Mrs. Alderman hand-cut, pieced and sewed the flag herself, working into the wee hours of last Thursday

morning to have it ready for the color presentation at the big Tip-Off Basketball Tournament at the College Thursday night. Her efforts were not in vain, as her hard work was rewarded with a resounding Brevard victory over Hudson Valley, New York in the opening round of the tournament. (Times Staff Photo)

She's Mabel Alderman

College's Modern Betsy Ross Makes Flag For Big Ceremony

Whitmire Announces

Burley Tobacco Growers Issued Marketing Cards

The plastic marketing cards now being issued to burley tobacco growers will be used to identify the crop from each farm, and constitute a vital record for each grower, Glenn Whitmire, Chairman of the Regional Stabilization and Conservation Committee, said today.

Injuries Of Brevard College Students In Wreck Said Minor

President Robert A. Davis reported today that the injuries suffered in an automobile accident returning from a game last week to Ray F. Hiler and Dennis A. Brown, members of the Brevard College Soccer team, were minor.

Hiler and Brown were riding in a car which wrecked near Jasper, Florida, as the team returned from winning the Region 10 soccer championship title.

Soccer Coach Larry Burch was at the scene of the accident —Turn to Page Two

Background Noted

Dr. Matheny Now Practicing Optometry With Dr. McGuire

Dr. Glenn S. Matheny has begun the practice of optometry here in Brevard. He will be associated with Dr. Frank B. McGuire, Jr., in Dr. McGuire's new office located at 290 North Broad street.

Dr. Matheny is a native of Highland Park, Michigan, and received his early education in the schools of Byron, Michigan. He received the Bachelor of Science degree from Michigan State University in 1964 majoring in chemistry and biology.

At Michigan State he was a member of Farm House Social Fraternity.

He received the Bachelor of Science and Doctor of Optome- —Turn to Page Two



Times Out Early

Thanksgiving Union Service Planned, Schools Will Close

The annual Community Thanksgiving Worship Service will be held this year at the Brevard-Davidson River Presbyterian church on Main Street.

Reverend F. H. Goldsmith, Pastor of Bethel "A" Baptist church, will deliver the Thanksgiving sermon and the Reverend Thomas B. McPhail, Assistant Minister of the Presbyterian church, will assist in the leadership of the worship.

There is no more fitting way for American Christians to observe Thanksgiving than to join in the honorable tradition of their forebears for corporate worship and public thanksgiving to their Creator.

The service will begin at 11:00 o'clock. Reverend Goldsmith's sermon topic is "Forgiveness Before Thanksgiving."

The Transylvania Ministerial association is sponsoring the service, and the public, and the public is most cordially invited to attend.

Other ministers participating in the service will be Rev. Donald C. Hicks, Rev. Nolan Ford and Rev. Edsel L. Keith.

A nursery will be provided.

Bible Reading Guides for National Bible Reading Season, November 22 - December 25, are available at the Church Office of the Brevard-Davidson River Presbyterian Church, for all who would be most cordially invited —Turn to Page Six

Program Highlights

Big Christmas Contest Is Being Planned Over WPNF

WPNF-Radio will soon be launching a great new contest which should be well worth entering.

Listeners should stay tuned to 1260 Radio for complete details on the new Christmas stacking contest, which will carry a prize package of \$100 for the lucky entrant who is the fortunate winner.

Details of the contest will be broadcast each day as well as

Police Chief Warns Against Holiday Thieves

Holiday time is open season for petty thievery, warns Brevard Police Chief, J. C. Rowe.

"People are busy shopping. They go to and from their cars, leaving packages and purchases in tempting sight in their unlocked vehicles. Worse still, they oftentimes leave the car keys in the ignition lock.

"This is a made to order opportunity for professional thieves and a strong temptation for amateurs.

"Ladies are particularly bad about leaving their pocketbooks in cars," says Chief Rowe. "I once walked four blocks on Main Street and counted 9 handbags left in plain sight in cars.

"We strongly urge everyone to follow a few simple precautions to avoid having their holiday season ruined by thieves:

"One, never leave handbags in sight in a vehicle—locked or unlocked. A handbag, with its promise of cash, is good reason for a break-in.

"Two, put all packages, or any other attractive items such as cameras, radios, and such, in —Turn to Page Six

Other Programs

Father Edward Sheridan, Pastor of Sacred Heart Roman Catholic Church of Brevard, is the speaker this week on WPNF's Morning Devotions program at 9:45 a.m.

Sunday morning worship services this month are being broadcast from the Western church with Pastor Eugene Gentry at 11:00 a.m. each Sunday.



By FRED REITER

Strong, gusty winds Monday along with a cold wave through the area made temperatures seem much colder than they really were.

Readings for the past six days averaged 54 and 31 degrees at Brevard, with a high reading of 64 on Saturday and a low of 21 on Sunday morning.

Extended forecast for North Carolina for Wednesday through Friday: Clear Wednesday, chance of showers Thursday through Friday. Very cold temperatures Wednesday and Thursday with warmer temperatures on Friday. Daytime highs Wednesday and Thursday around 40 degrees. Friday highs should be in the mid-50s. Low Wednesday and Thursday will average near 20 degrees, while Friday's low will be near the freezing mark of 32 degrees.

Readings for the past six days as follows:

	High	Low	Free.
Wednesday	42	26	0.05
Thursday	56	34	0.05
Friday	63	46	0.09
Saturday	64	27	0.00
Sunday	60	21	0.00
Monday	38	34	0.00

Latest Survey Reveals

More Local Families In Upper Brackets

How well are Transylvania County residents making out financially? What proportion of local families are now to be found in the upper income brackets?

According to a nationwide survey, rising wages and salaries have carried most families in the area to higher positions on the income ladder.

Just where they stand, currently, is brought out in a copyrighted report issued by Sales Management, the marketing publication. It details, for every section of the country, the percentage of families that fall within each income bracket.

The survey was designed to give a better understanding of a community's buying power than was possible through the "average income" figure alone.

It shows whether average

income in a locality represents earnings that are well distributed among the bulk of the population or whether it stands for a small proportion of families with very large incomes compensating for a much larger number with low incomes.

In Transylvania County, it finds, the level of earnings and the distribution are relatively good. Some 63.5 per cent of the households in the local area had disposable cash incomes, after taxes, of \$5,000 or more in the past year.

The proportion of families with net incomes over \$5,000 was greater than was reported for many parts of the country. In the State of North Carolina as a whole there were 62.1 per cent.

Since the survey took into

account only cash income, farm families do not appear to their best advantage, as no allowances were made for the lower living costs on the farm.

The Transylvania County breakdown gives the position of each group of local families on the income ladder. It lists 22.4 per cent of them on the \$5,000 to \$8,000 rung, 15.0 per cent at the \$8,000 to \$10,000 level and 26.1 per cent above \$10,000. The remainder are below \$5,000.

Nationally, according to Commerce Department figures, the median income of families rose 8.3 per cent during the past year. However, since consumer prices rose 5.4 per cent, the real gain in family purchasing power was about 2.9 per cent.