

Hints From The County Extension Chairman

By - JERRY PURSER



Beef Cattle - Maine-Anjou

The dark red and white Maine-Anjou breed is the result of continued crossings since about 1830 between the Durham-breed from England, and the rugged Mancelle cow native to Western France. The Mancelle cow contributed its hardiness, vigor and its ability to keep producing when available pasture was low. The Durham breed also accompanied the early settlers to the United States from the old country. It pulled the wagon, gave milk for the settlers' families, produced a calf each year, and was later slaughtered to feed the families it had pulled those long miles. Quite a glorious heritage for this great new breed.

The Maine-Anjou was used in France to produce both meat and milk for the poor tenant farmers during the 19th century. However, they gained favor over other native breeds

because the females continued to produce milk during the extremely dry summer conditions and were easily maintained. Today the breed average for milk production is approximately 6,500 lbs. per lactation containing 4% butter fat.

Maine-Anjou cattle are the largest of the French breeds, and although they are used for meat and milk, they are best developed as beef producers and the carcasses are of prime quality.

For years Maine-Anjou were selected for milk and meat production. No bull is used whose paternal dam and grand dam have not exceeded 6,500 lbs. of milk per lactation. Maine-Anjou cows have the needed milk to feed the fast growing calves, and cows that do not produce a calf each year are slaughtered.

Although the Maine-Anjou are docile and easily managed, nervous cattle were eliminated years ago when these animals were being milked.

When you think of prescriptions, think of VARNER'S, adv.

Menus For School Lunchrooms For The Week Are Announced

Menus for Transylvania County Schools for the week beginning Thursday, Jan. 20th through Thursday, Jan. 27th.

Thursday—Hot Turkey Salad, Soupe, Saltines, Buttered Green Peas, Apple-Carrot-Raisin Salad, Grilled Cheese Sandwich, Chocolate Rolled Wheat with White Icing, Milk, Butter

Friday—Beef/Vegetable Soup, Saltines, Grilled Pimento Cheese Sandwich or Peanut Butter Sandwich, Pickle Slices, Deep Dish Peach Pie, Milk, Butter

Saturday—Hamburger with School Bun, Thin Onion Slices, Baked Potato, Tossed Salad, Apple Crisp, Milk, Butter

Sunday—Hamburger with School Bun or Fish Croquettes with Tartar Sauce, Apple Crisp or Orange and Plain Cookie

Monday—Country-style Steak, Grits, Gravy, Baked Apple Slices, Basic Cole Slaw with Radishes, Oatmeal-Raisin Cookie, Hot Rolls, Butter, Milk

Tuesday—Chicken - Noodle Soupe, Saltines, Buttered Green Peas, Apple-Carrot-Raisin Salad, Grilled Cheese Sandwich, Chocolate Rolled Wheat with White Icing, Milk, Butter

Wednesday—Hamburger with School Bun, Thin Onion Slices, Baked Potato, Tossed Salad, Apple Crisp, Milk, Butter

Thursday—Baked Beans with Franks, Basic Cole Slaw, Fruit Cup, Corn Muffins, Iced Brownie, Milk, Butter

Friday—Beef/Vegetable Soup, Saltines, Grilled Pimento Cheese Sandwich or Peanut Butter Sandwich, Pickle Slices, Deep Dish Peach Pie, Milk, Butter

Saturday—Hamburger with School Bun or Fish Croquettes with Tartar Sauce, Apple Crisp or Orange and Plain Cookie

Sunday—Hamburger with School Bun or Fish Croquettes with Tartar Sauce, Apple Crisp or Orange and Plain Cookie

Lillians Ceramics To Conduct Series Of Classes, Starts 24th

In response to the growing interest in ceramic making and decorating, Lillians Ceramics will conduct a series of classes starting January 24th at 9:30 a.m. in all phases of this interesting hobby.

Instruction will be available for beginners, as well as advanced ceramists. Included in the courses will be the use of glazes and strains in unique methods.

Information on these classes may be obtained from Lillian King, Island Ford Road.

The validation of savings and loan customers through the use of a plastic identification card and a computer-based teller system saves time and reduces costs for a Nebraska savings and loan bank.

When in need of job printing, call The Transylvania Times.

TRANSYLVANIA BOOKMOBILE SCHEDULE

Thursday, January 20 ----- Rosman
 Tuesday, January 25 ----- Balsam Grove
 Wednesday, January 26 ----- Eastatoe
 Thursday, January 27 ----- Blantyre
 Tuesday, February 1 ----- Hendersonville Hwy.

Cub Scouts Of Pack 711 Are Preparing For Space Derby



Excitement is mounting among boys in Cub Scout Pack #711 as they prepare for the Pack Space Derby to be held this month.

Whittling, sanding, painting, decorating—all of it has to be done by Saturday, January 22, for the big race is to be that morning.

Scouts and their families will gather at 10:00 a.m. at the American Legion auditorium, eager to see how each model will perform.

The boys have made rockets that fly on wires, and prizes will be awarded in two categories—first and second place for the fastest, and first and second place for the best looking.

There will also be a winner in every den for the fastest.

Overall winners of first and second place in the two categories will advance to the district race to be held at Grange Hall, Etowah, January 29, at 10:30 a.m.

Other Cub Scout activities this month include a workshop for leaders on Thursday, January 20, at Etowah Baptist church. The morning session will be at 10:00, evening session at 7:30. The regular pack meeting will be Thursday, January 27, at 7:00 at the First United Methodist church. At the January pack meeting the prizes from the Space Derby will be awarded.

"Action" Board Meets Thursday

There will be a special meeting of the Western Carolina Community Action, Inc., Board of Directors held in the Etowah Grange Hall on Thursday, January 20, at 7:30 p.m.

Representatives from the regional and state offices will provide training in the grant application process.

The United States accounts for 15 per cent of the world's total trade, and is by far, the largest trading nation in the world.

Science for You BY BOB BROWN



PROBLEM: Acrobatic rice puffs.

NEEDED: Window glass, a silk cloth, puffed rice, some books and a dry day when the humidity is low.

DO THIS: Place books under the edges of the glass so it rests about 3/4 inch above the table. Spread puffed rice under the glass. Rub the glass briskly with the cloth, and the rice will jump about. Draw a finger along on the glass, and some of the rice puffs will tumble about under the finger.

HERE'S WHY: The cloth rubs away some of the surface electrons from the glass, leaving it with a positive charge of electricity. Electrons in the puffed rice will be attracted by the positive charge on the glass, and some electrons will move, in the rice, to the upper surface closer to the glass. The attraction then between the positive glass and the negative rice puffs will be sufficient to make them move about, and jump to the glass. The moving finger will rearrange some of the charge on the glass.

This special "Science For You" feature is sponsored by Olin Corporation at Pisgah Forest in co-operation with the Transylvania Times.

MEN NEEDED
 In this area to train as
LIVESTOCK BUYERS
 LEARN TO BUY CATTLE, HOGS AND SHEEP at sale barns, feed lots and ranches. We prefer to train men 21 to 35 with livestock experience. For local interview, write age, phone, address and background to:
NATIONAL MEAT PACKERS TRAINING
 P.O. Box 1563-Dept. NC-513 Atlanta, Ga. 30301

The General Agreement on Tariffs and Trade (GATT) includes 78 nations. The United States played a major role since its inception 25 years ago.

STAY AWAKE ITCHING?

Let doctor's formula stop it. Zemo speeds soothing relief to externally caused itching of eczema, minor rashes, skin irritations, non-poisonous insect bites. Desensitizes nerve endings. Kills millions of surface germs, aids healing. "De-itch" skin with Zemo, Liquid or Ointment. Quick relief, or your money back!

4-door economy favorite ...Maverick

Or a 3-door that's even thriftier ...Pinto

Ford's popular Maverick 4-Door Sedan is big-family roomy. It not only saves with a really low price tag, but saves on gas, oil and repairs, too. Want greater savings? Check into Pinto Runabout, the little wagon with a big 5-ft. carrying space and handy liftgate. It's even priced lower than Volkswagen's model 113, the "Superbeetle!"

See the "home folks," your Carolina Ford Dealers

*Based on a comparison of sticker prices for the base Volkswagen 113 and Pinto 3-Door Runabout.

LYDA-McCRARY MOTORS, Inc.

214 N. BROADWAY

FRANCHISE DEALER NO. 1811

BREVARD, N. C.

Absolutely Fresh

(NOT FROZEN)

Baked to your order right in our kitchen in only 5 minutes at

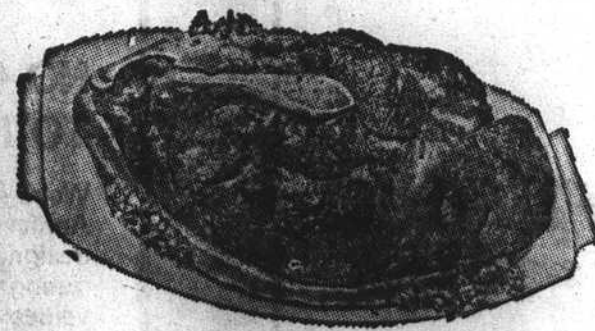
THE PARTNERS RESTAURANT & COFFEE HOUSE

Open 6 a.m. to 1 a.m.



DELICIOUS CHAR-BROILED STEAKS

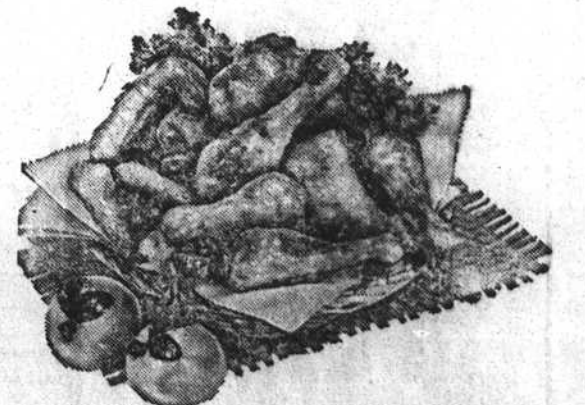
A Specialty On FRIDAY & SATURDAY NIGHTS



Our Mouth-Watering Steaks are Carefully Prepared On Our Newly Installed

TOASTMASTER CHAR-BROILER WITH THERMO-SIZZLE PLATTER

Try One, with Either French Fries or Baked Potato THIS FRIDAY OR SATURDAY NIGHT!



SOUTHERN PAN FRIED

Chicken Dinner Special

with French Fries Cole Slaw Hot Rolls Butter Coffee or Tea

EACH THURSDAY & FRIDAY Only \$1.25

Fresh Pizza a Specialty Every Night at

THE PARTNERS RESTAURANT AND COFFEE HOUSE

Dial 883-9978

408 N. Caldwell Street

Brevard