



MELTON COMPANY, REALTORS

HOMES

BALSAM GROVE — Three-bedroom brick home in beautiful setting. Paneled throughout with fireplace in living room. Nice pond well stocked with trout. Good frontage on paved road. Property borders on National Forest. Excellent view. Only four years old. \$24,500.

A VERY COMFORTABLE two-bedroom home located close to town. Large kitchen with eating area, family room with fireplace, nice living room. Plenty of storage. There is a large patio in the back looking out at a nicely landscaped yard. Very neat. \$23,500. This home could also be purchased with furnishings for \$25,600.

EASTATOE — This almost new, three-bedroom A-frame with furnace and fireplace is located on 1 1/2 acre mountainside lot, surrounded by beautiful views. Located just off Whitmire Road, this small house has a nice covered deck and is ideal for full-time living or as a vacation home. \$17,000.

RIVERSIDE ESTATE — Large, well planned home on nice lot with breathtaking view. Living room, dining room, large kitchen with breakfast bar, half bath, and family room on first floor. Three large bedrooms and two full baths on second floor. Large game room and workshop in basement. Over 2500 square feet of lovely home in excellent location. Double garage. \$39,900.

MODERN SPLIT LEVEL HOME designed for comfortable family living. This four-bedroom, three-bath home has a large living room, dining area, equipped kitchen with breakfast room, and large paneled family room with fireplace. Convenient location. \$46,500.

A MODERN TRI-LEVEL HOME with three bedrooms, two baths, efficient, well-equipped kitchen, and a fireplace in living room and in the den. Carport. In desirable, conveniently located residential area. \$39,500.

LOOKING FOR PRIVACY? This four-bedroom home with one and one-half acres is conveniently located to schools and shopping. Large playroom with fireplace. Nice utility area. Separate garage apartment. Outdoor swimming pool. \$37,500.

LOOKING FOR ECONOMY? Here is a home with three bedrooms and a living room with fireplace. This older home is conveniently located in a pleasant area in town. There is a large back yard as well as other desirable features. A good housing opportunity at \$16,500.

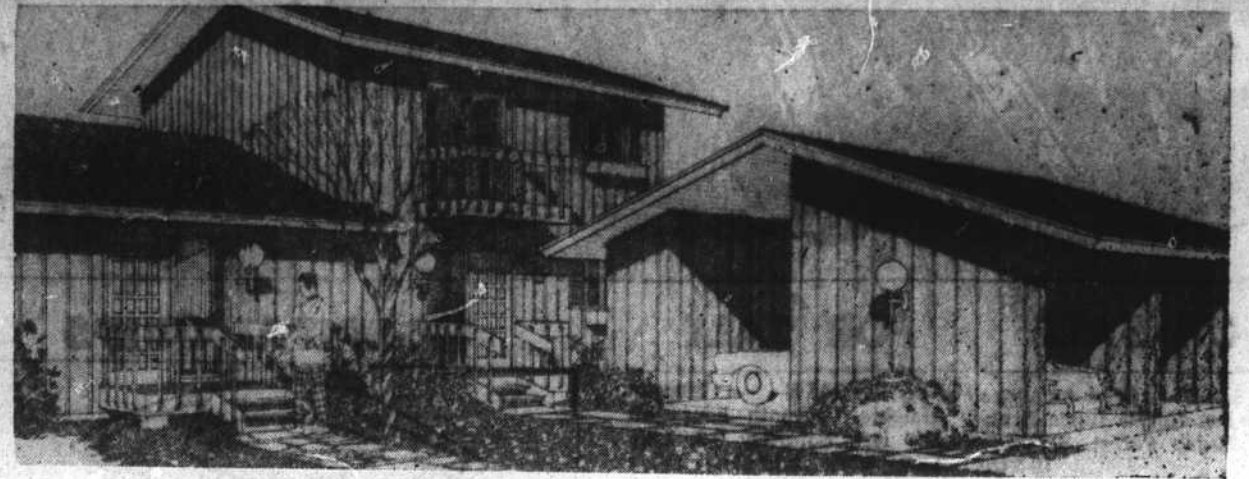
MIDDLEFORK — WHITMIRE ROAD — Large four-bedroom Chalet. Three-quarter inch solid cedar exterior. One full bath and two half baths. Large living room has stone fireplace. Over 800 square feet of deck. One-car garage in basement and 22' x 24' detached garage and workshop. Built-in intercom. Large garden spot. Breathtaking view on three sides. Over three acres of beautiful mountain land. Built by contractor for his own home with the best of workmanship and materials. \$39,500.

DOUBLE WIDE MODULAR HOME — Almost new. Located on five and one-half acres on See Off Mountain. This nicely furnished home has three bedrooms, one walk-in closet, one and one-half baths, nice living room, and modern kitchen. Large redwood deck. \$29,000.

LINDAL CEDAR HOME — Model home on Cedar Ridge, located approximately one mile from Brevard on U. S. 276. This home is on a large wooded lot overlooking French Broad Valley. Beautiful, solidly constructed cedar chalet with four bedrooms and two baths. Fully equipped kitchen. Underground utilities. Excellent view. \$41,000.

TRADITIONAL TWO - STORY — Located in one of Brevard's most desirable subdivisions. Four bedrooms, two and one-half baths. Large family room. Fireplace in spacious living room. Completely equipped kitchen. Two-car finished garage. Over 2240 square feet of heated area. Gas heat. Carpet. \$53,500.

A LARGE MODERN TWO-STORY HOME conveniently located on quiet street. This four-bedroom home has a family room with fireplace, nice utility room, a large game room, a roomy workshop, and a two-car garage. The modern kitchen, with double wall oven, is only one of the many nice features of this attractive brick and cedar shingle home. \$59,000.



GLEN CANNON COUNTRY CLUB CONDOMINIUMS

Glen Cannon Townhouse Condominiums bordering beautiful Glen Cannon Golf Course. The ultimate in carefree country living. Magnificent views in every direction. These Townhouse style condominiums feature:

You are cordially invited to call us for an appointment to visit these models and learn all about the advantages of carefree condominium living.

The two-bedroom Townhouse Condominiums feature a cathedral ceiling in the living room and dining area and a fireplace in the living room. The lower level has two bedrooms and two full baths. Priced at \$31,500 without carport and \$34,000 with carport.

The three-bedroom Condominiums have two large bedrooms and one bath on the upper level, attractive living room and dining area with fireplace and modern kitchen on the middle level. The lower level has a den with fireplace, as well as a bedroom and full bath. These Townhouses have a carport with storage area and are priced at \$46,000.

- *Two-bedroom units or three-bedroom units with den
- *Electric heat and central air-conditioning
- *Dream kitchen including dishwasher, disposal, waste compactor, oven, range, hooded fan
- *Many decorating options
- *Two full baths in each unit
- *Wood-burning fireplace in each living room
- *Wall-to-wall carpeting throughout
- *Monthly maintenance fee includes water, insurance, exterior maintenance, plus street lighting, lawn and ground care
- *Golf, swimming, tennis, through membership in the Country Club
- *8' x 24' outdoor balconies with each unit, plus patios
- *Units with or without carports

HOME SITES

GLEN CANNON — A new section of beautiful home sites just opened in this highly desirable area. These home sites range in size from approximately one acre to four acres. Prices start at six thousand dollars.

We offer home sites in Glen Cannon, Illahee Hills, Thomas Woods, Sylvania, Sevensprings, Connestee Falls and Lochencove Ridge. These properties range in size up to five acres.

COMMERCIAL

CORNER OF MORRIS ROAD AND VANDERBILT ROAD — Two and one-third acres across from Olin, \$15,000.

COMMERCIAL LOT on Corner East Main and Johnson Streets 82.5 by 134. \$20,000.

CEDAR MOUNTAIN. Corner Du Pont Road and U.S. 276. This large lot has 102 feet frontage on U.S. 276 and 340 feet on Du Pont Road. \$8,500.

COMMERCIAL LOT — This vacant has 50 feet frontage on Jordan Street and is 134 feet deep. \$6,200.

INVESTMENT PROPERTY — This 1.7 acres fronts on Old Highway 64 from Chestnut Street to Oakdale Avenue. This large corner lot has a four-bedroom home and garage apartment on property. Possible future commercial use. \$33,000.

ACREAGE AND FARMS

TWENTY-ONE ACRES with summer cabin, located in Hogback Township near Whitewater Falls. This property is secluded with a nice stream and numerous building sites. \$21,000.

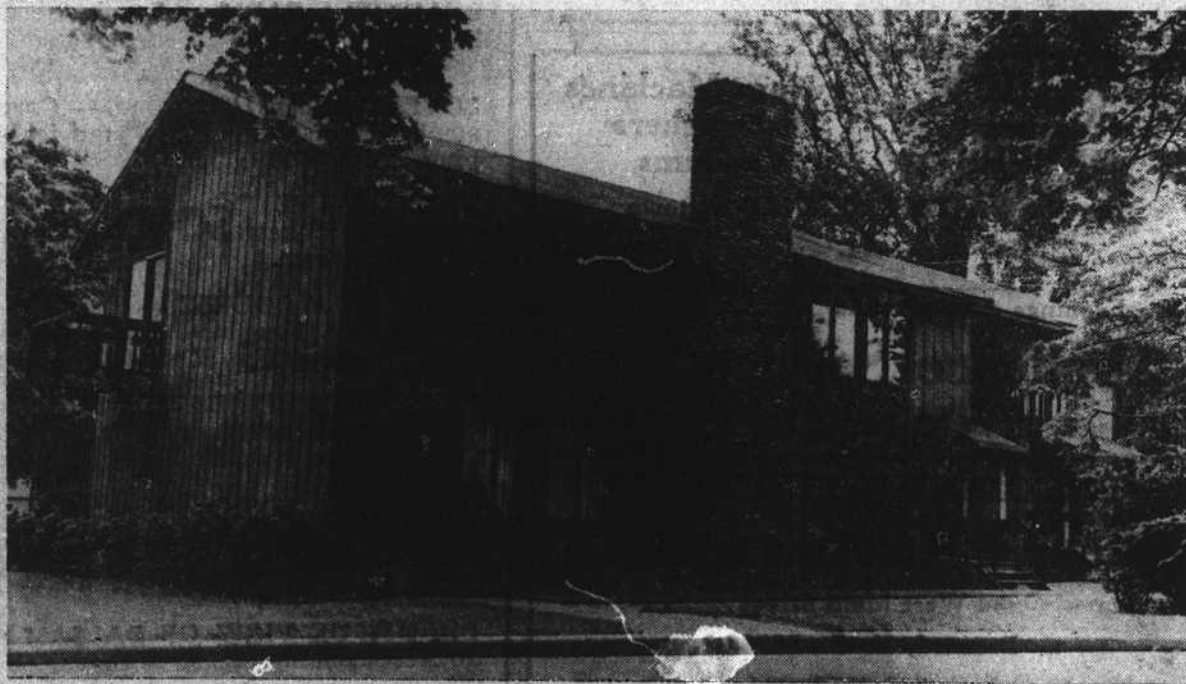
32 ACRES located on Walnut Hollow Road. Mostly wooded land with nice stream and a number of building sites. This property is located near the Connestee Falls property. \$45,000.

90-ACRE DEVELOPMENT TRACT — Suitable for light industrial and/or residential development. City sewer and water nearby. Adjoins several residential subdivisions. Highway and railroad frontage. One mile northeast of Brevard. \$135,000.

124-ACRE FARM TRACT — On Crab Creek Road and Little River. Well builtup soil with extensive tile drainage. Three-story barn, tenant house and another barn. An especially desirable farm. \$112,000.

190-ACRE PRIME INDUSTRIAL SITE — Railroad and natural gas on the property. Highway and river frontage. Seven miles northeast of Brevard. \$190,000.

16 ACRES ON ROAD TO THE NEW HOSPITAL — All cleared with sewer and water. Adjacent to Pisgah Heights. Desirable for residential or possible commercial development. \$56,000.



SHEPARD SQUARE IN TOWN CONDOMINIUMS

These handsome condominiums are most conveniently located near the center of Brevard within walking distance of schools, shopping and churches. The entire condominium site is being beautifully landscaped to enhance the wooded surroundings. Brick fireplaces and sidewalks compliment the charm and beauty of Shepard Square. These Townhomes feature:

Both two and three-bedroom Townhouse Condominiums are available. Also offered are two-bedroom, one-level units.

Shepard Square includes a swimming pool and club house for residents and their guests. We invite you to call us for an appointment to inspect this convenient condominium way of life.

- *Two and three-bedroom units
- *Completely equipped kitchen includes dish dishwasher, disposal, waste compactor, refrigerator-freezer, range and self-cleaning oven
- *Ceramic baths
- *Insulated windows and sliding patio doors
- *Master TV antenna system
- *Carrier heat and air conditioning
- *Carpeting throughout
- *All masonry fireplaces

The attractive one-level, two-bedroom units have a large living room with fireplace or deck, dining area, full equipped kitchen and two full baths. These most comfortable condominium homes are priced at \$24,500.



MELTON COMPANY, REALTORS

300 North Broad Street, Brevard, N.C.

883-8165 ANYTIME

MEMBER OF: HALL GROUP • NATIONAL INSTITUTE OF REAL ESTATE BROKERS • NATIONAL INSTITUTE OF FARM AND LAND BROKERS • NATIONAL ASSOCIATION OF REAL ESTATE BOARDS • INTER-CITY RELOCATION SERVICE

Steve Densie, Realtor®
Bill Leonard, Realtor®

Chick Martin, Realtor®
Buddy Melton, Realtor®

Vernon Risher, Realtor®

CALL US FOR INFORMATION ABOUT OUR GUARANTEED HOME TRADE-IN PLAN

