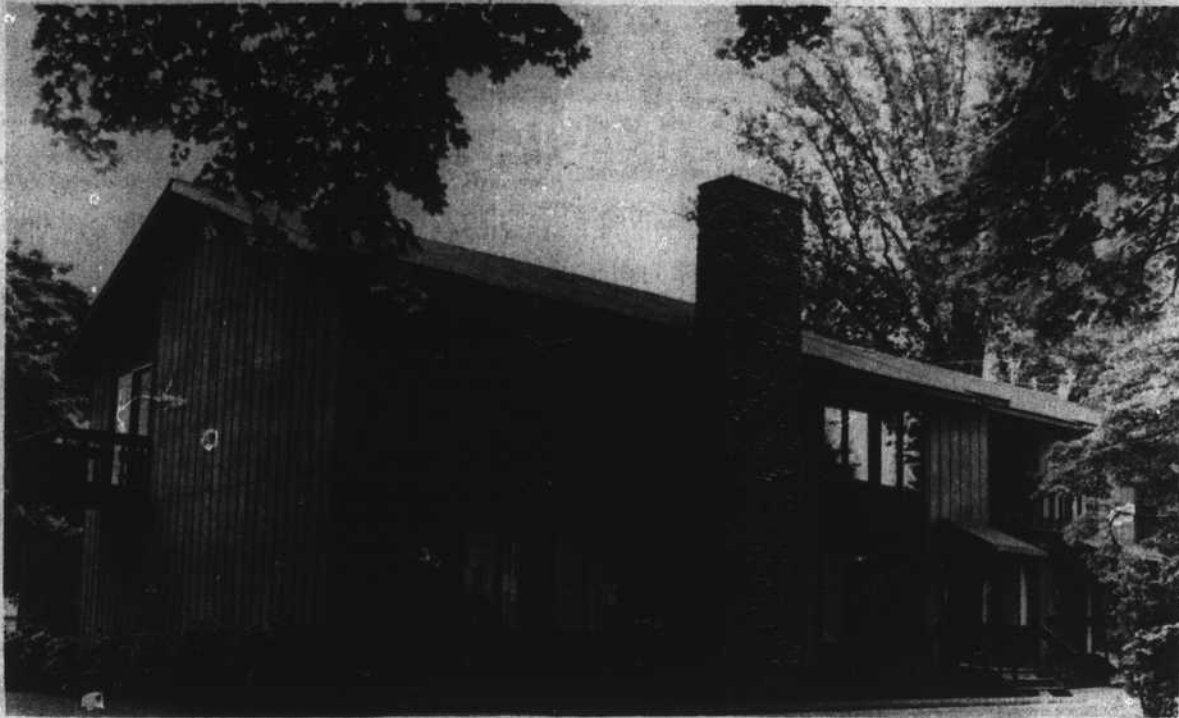




MELTON COMPANY, REALTORS



SHEPARD SQUARE IN TOWN CONDOMINIUMS

These handsome condominiums are most conveniently located near the center of Brevard within walking distance of schools, shopping and churches. The entire condominium site is being beautifully landscaped to enhance the wooded surroundings. Brick fireplaces and sidewalks compliment the charm and beauty of Shepard Square. These Townhomes feature:

- *Two and three-bedroom units
- *Completely equipped kitchen includes dishwasher, disposal, waste compactor, refrigerator - freezer, range and self-cleaning oven
- *Ceramic baths
- *Insulated windows and sliding patio doors

- *Master TV antenna system
- *Carrier heat and air conditioning
- *Carpeting throughout
- *All masonry fireplaces

Also offered are two-bedroom, one-level units. These attractive units have a large living room with fireplace or deck, dining area, fully equipped kitchen and two full baths.

Shepard Square includes a swimming pool for residents and their guests. We invite you to call us for an appointment to inspect this convenient condominium way of life. These most comfortable homes are priced at \$27,500 - \$34,500.

ACREAGE AND FARMS

TWENTY-ONE ACRES with summer cabin, located in Hogback Township near Whitewater Falls. This property is secluded with a nice stream and numerous building sites. \$21,000.

90-ACRE DEVELOPMENT TRACT — Suitable for light industrial and/or residential development. City sewer and water nearby. Adjoins several residential subdivisions. Highway and railroad frontage. One mile northeast of Brevard. \$162,000.

124-ACRE FARM TRACT — On Crab Creek Road and Little River. Well built up soil with extensive tile drainage. Three-story barn, tenant house and another barn. An especially desirable farm. \$112,000.

32 ACRES located on Walnut Hollow Road. Mostly wooded land with nice stream and a number of building sites. This property is located near the Conestee Falls property. \$45,000.

HOME SITES

GLEN CANNON—Large wooded lots with views. All underground utilities. Located on or near beautiful Glen Cannon Golf Course. Lots range in size up to four acres. Financing available. One lot adjoining golf course for resale at \$12,000.

ILLAHEE HILLS—One of Brevard's finest residential areas. City water, underground utilities. Convenient to schools and shopping. Financing available.

THOMAS WOODS — New section just opened. Lots range in size from 1.5 acres to four acres. View lots or wooded lots. Underground utilities. Priced from \$4,400 to \$8,800.

LOCHENCOVE RIDGE—There are seven wooded lots available in this development located off Country Club Road. One acre and up. Priced from \$4,750 to \$6,200. Owner will finance.

CONNESTEE FALLS—Located six miles south of Brevard. Year round residential recreational community. Twenty-four hour security. Good selection of lots in excellent locations.

SEVENSPRINGS — One five-acre lot for resale in this development. Excellent view. \$3,500.

COMMERCIAL

ROSMAN HIGHWAY — 3/4 acre lot with one hundred eleven feet frontage on U. S. 64 near Cathey's Creek. No restrictions. \$6,500.

GOOD INVESTMENT — This small business has shown an increase each month since opening. Complete inventory for sale. Price adjusted according to inventory. Ideal location.

CEDAR MOUNTAIN. Corner Du Pont Road and U.S. 276. This large lot has 102 feet frontage on U.S. 276 and 340 feet on Du Pont Road. \$8,500.

CORNER OF MORRIS ROAD AND VANDERBILT ROAD — Two and one-third acres across from Olin. \$15,000.

COMMERCIAL LOT—This vacant lot has 50 feet frontage on Jordan Street and is 234 feet deep. \$6,200.



GLEN CANNON COUNTRY CLUB CONDOMINIUMS

Glen Cannon Townhouse Condominiums bordering beautiful Glen Cannon Golf Course. The ultimate in carefree country living. Magnificent views in every direction. These Townhouse style condominiums feature:

- *Two-bedroom units or three-bedroom units with den
- *Electric heat and central air-conditioning
- *Dream kitchen including dishwasher, disposal, waste compactor, oven, range, hooded fan
- *Many decorating options
- *Two full baths in each unit
- *Wood-burning fireplace in each living room
- *Wall-to-wall carpeting throughout
- *Monthly maintenance fee includes water, insurance, exterior maintenance, plus street lighting, lawn and ground care
- *Golf, swimming, tennis, through membership in the Country Club
- *8' x 24' outdoor balconies with each unit, plus patios
- *Units with or without carports

The two-bedroom Townhouse Condominiums feature a cathedral ceiling in the living room and dining area and a fireplace in the living room. The lower level has two bedrooms and two full baths. Priced at \$37,300 with carport.

The three-bedroom Condominiums have two large bedrooms and one bath on the upper level, attractive living room and dining area with fireplace and modern kitchen on the middle level. The lower level has a den with fireplace, as well as a bedroom and full bath. These Townhouses have a carport with storage area and are priced at \$50,600.

The one-level two-bedroom, two-bath units have a large living room and dining area. Lower units \$44,000, upper units \$47,750.

You are cordially invited to call us for an appointment to visit these models and learn all about the advantages of carefree condominium living.

HOMES

PRIVACY is what you get with this roomy home located in the Crab Creek section of Henderson County. This total electric home has three or four bedrooms with three baths. The downstairs is covered with Tennessee marble. Two fireplaces. Large deck off the living-dining area. Over 2,400 square feet of living area. Near the new road to DuPont. 1.93 acres. Additional acreage could be acquired. \$55,000.

MOUNTAIN STREAM — Three-bedroom home with guest house. Located on approximately two acres on Pickens Highway. Beautiful grounds. Old waterwheel. Three rock fireplaces. Wormy chestnut cabinets in kitchen. Screened porch. Deck. Partially furnished. \$45,000.

BEAUTIFUL VIEW — This Rondette is located on two and one-half acres on See Off Mountain. Completely furnished. Rondette has living room, bedroom and kitchen. A second cottage partially constructed. One of the most outstanding views of the French Broad Valley. \$16,500.

MODERN TRI-LEVEL HOME with three bedrooms, two baths. Efficient, well - equipped kitchen. A fireplace in living room and in the den. Carport. In desirable, conveniently located residential area. \$39,500.

SUMMER COTTAGE — Six miles from Brevard on Rosman Highway. Located on two and one-half acres. This three-bedroom cottage has just been completely remodeled. Fully furnished. \$16,950.

DOUBLE WIDE MODULAR HOME — Almost new. Located on five and one-half acres on See Off Mountain. This nicely furnished home has three bedrooms, one walk-in closet, one and one-half baths, nice living room, and modern kitchen. Large redwood deck. \$29,000.

INVESTMENT PROPERTY — 4-Bedroom home and a separate garage apartment. Located in city limits on one and one-half acre wooded lot. Both are rented at present time. \$29,900.

FRENCH COUNTRY HOME — Four large bedrooms. Two and one-half baths. Extra closet space. Family room with fireplace. All electric kitchen. Slate floor foyer. Full basement. Excellent view. Privacy. One acre wooded lot in Riverside Estates. \$52,500.

NEED MORE ROOM? — This home has over 3,400 square feet of living area. Four bedrooms, two and one-half baths. Utility room, study or sewing room, large playroom for children, workshop for Dad. Den with fireplace. Modern kitchen with many extras. Convenient to schools and shopping. \$59,000.

GIRL SCOUT CAMP ROAD — Completely winterized mobile home with large bedroom and covered front porch added on. Located on a beautiful lot approximately one acre in size. Outstanding view. Water system and septic tank. Furnished. Priced at \$8,000.

OVERLOOKING the beautiful French Broad River, this three-bedroom, two-bath National Home offers scenic views. Large finished two-car garage and spacious deck. Electric heat. Fireplace in living room. \$34,200.

NEW BRICK HOME — Three bedrooms, two baths, just being completed. Carpeted throughout. Total electric. In Cathey's Creek area. Small stream runs along the edge of this lot. A nice view from the deck. \$26,400.

UNDER CONSTRUCTION — Three-bedroom, two-bath home is nearing completion. Living room opens onto deck. Den and full basement. Convenient to shopping and schools. \$24,000.

DUCKWORTH AVENUE—Two-bedroom home with one bath. Living room has hardwood floors and stone fireplace. Den adjoining living room. Kitchen has dining area. Attic floored for storage. \$8,500.

CONDOMINIUMS FOR RESALE — Shepard Square — Three-bedroom, two-bath Townhouse. Family room, living room, dining room and completely equipped kitchen. \$32,500.

CALL US FOR INFORMATION ABOUT OUR GUARANTEED HOME TRADE-IN PLAN

Steve Dense, Realtor
Bill Leonard, Realtor

Chick Martin, Realtor
Buddy Melton, Realtor

BUD LAWING, ASSOCIATE
Vernon Risher, Realtor



MELTON COMPANY, REALTORS

300 North Broad Street, Brevard, N.C.

883-8165 ANYTIME

MEMBER OF: HALL GROUP • NATIONAL INSTITUTE OF REAL ESTATE BROKERS • NATIONAL INSTITUTE OF FARM AND LAND BROKERS • NATIONAL ASSOCIATION OF REAL ESTATE BOARDS • INTER-CITY RELOCATION SERVICE



REALTOR

