

Blackwell, McCrary, Duvall

Three Business Management Candidates Committed To Brevard Tax Cut If Elected

Promise To Work With Young People

The three "business management" candidates for city office in the November 6th local election have now promised a tax cut for the city of Brevard if elected.

Says Don Blackwell, successful Brevard business man and candidate for Mayor:

"We have now investigated enough to be convinced it is not necessary to continue spending at a level which requires the present city tax rate. We are certain that with this year's income, city tax could be cut. With the certain increase in city revenues in the future, we see no reason why we cannot have full city services and still cut taxes, if the money received is handled in a careful businesslike way.

Jud McCrary and Clyde Duvall, the two other Brevard businessmen who are running for the Board of Aldermen on the business management team, stress their belief that the city taxes are the most important issue in this campaign.

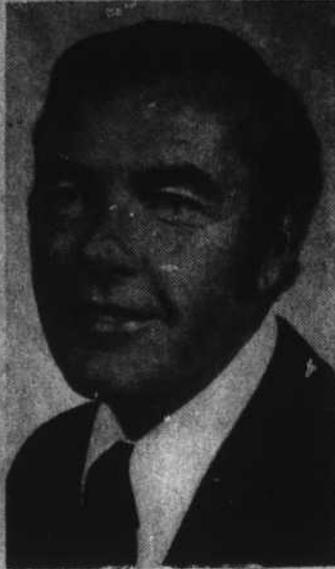
"From everything we've heard, people are more concerned about rising taxes than any other single issue," says McCrary. "We believe most people in Brevard agree with us that city services could be maintained with a smaller percentage of our city income, thus allowing a cut in taxes."

"When this campaign first began," says Clyde Duvall, "we believed city taxes could and ought to be cut, but we did not feel we could make a firm promise to do so.

"Now we do. We are certain



DON BLACKWELL



JUD McCRARY



CLYDE DUVAL

it can be done, and we are confident of support by the incumbent Aldermen so that our promise can be carried out."

Look At Budget

"Let's look at our budget," says Don Blackwell. "Three years ago, before the last election, it was \$494,800.00. This year it is \$746,437.00 — a 50 per cent increase in spending."

"It is interesting to note that, while money from taxes on real and personal property went up from a total of \$203,029.00 to \$297,289.00 — an increase of \$94,261.00, or about 46 percent — our city income from other sources (including the penny sales tax, ABC profits, and Revenue Sharing), jumped from \$291,772.00 three years ago to \$449,148.00 this year — an increase of \$246,120.00, or about 83 per cent!

"We'd like for the voters to note this," Blackwell stresses. "With an outside income increase of 83 per cent, our city taxes were still increased by 46 per cent. It is our stand that city services should be maintained out of such outside income increases without proper

"We will support full cooperation by the city, with county efforts toward providing as much in the way of youth oriented facilities as is reasonably possible in the framework of a responsible administration."

Young People Too

"It is our belief that the interests of young people have been largely overlooked in this campaign — and to some extent in the city," says Clyde Duvall.

"We want to make it clear that we know there are many young voters in the city. We are aware that these, and those young are the citizens who will be running the city and country in the future. We ask for the young peoples' votes on the commitment that they will be fully considered in the forward-looking administration we intend to support.

"We will support full cooperation by the city, with county efforts toward providing as much in the way of youth oriented facilities as is reasonably possible in the framework of a responsible administration."

Open Door

"One other thing," says Jud McCrary, "should be stressed. And that is our intention to provide, as far as we personally can, an open door administration.

"We intend to be available to anyone — of any race, creed, color or age — who wants to see us in the interest of better city government. We believe the city's business is big business and can best be administered by businessmen, but we will be interested in the ideas of anyone who wants to agree, disagree, praise or blame us for what we do. We guarantee to listen."

Voting Places

"We'd like to remind the city voters of the poll arrangements in this election," says Blackwell, "so there's no danger of anyone failing to register his choice in either

ty tax raises, if the city's money is managed as it should be. Further, we are sure that good business management of the city's business can not only prevent tax increases, it can allow a tax cut. And we are committed to this promise."

the City or the State-wide election.

"As everyone probably knows, this will be an election on both state-wide (the School Bond issue, for example), and local issues. Because of recent changes in the state election laws, it will be necessary for many individual voters to go to two polling places.

"We ask that all voters remember these simple rules:

"For the City Election, city voters should go either to the American Legion Building or the City Hall, Precinct No. 1, or those living on the north side of Broad Street, should go to the City - Hall, Precinct No. 2, or those living on the south side of Broad Street should go to the American Legion Building.

"For the State-wide election, all city and county voters should go to their usual county precinct polling places.

"Some voters will have to go to two polling places to cast their ballots because their city and county precinct polling places may not be the same," Mr. Blackwell concludes.

Head Start Library Is Seeking Books

The Transylvania Head Start Program is starting a traveling lending library to be used as an educational aide.

"If you have any children's books you would like to donate, please call the Western Carolina Community Action office, 883-8151 for pick up or drop them by at 214 South Broad Street," officials state.

When you think of prescriptions, think of VARNER'S, adv.

Science for You

BY BOB BROWN



PROBLEM: The Reynolds Ridge.

NEEDED: A piece of glass, running water, soap.

DO THIS: Clean the glass thoroughly, then hold it under the faucet until the soap has been washed off. Take it away from the water, then before the film of water has drained off, touch the bottom of the glass with a soapy finger. A ridge will be seen to rise up the glass in the water film.

HERE'S WHY: The clean water has greater surface tension than the water contaminated by the finger at the bottom of the glass. The greater surface tension draws the contaminated water up, making a ridge where the two kinds of water meet. This is called the Reynolds Ridge. It may be seen many places in nature, particularly at the edges of bodies of water.

Oil on the fingertip will cause the ridge to move up, but more slowly. The finger alone usually will contaminate the water enough to cause a slowly moving ridge. To make a standing ridge in a natural body of water, both water and contaminant must be flowing. The ridge moves upstream exactly as fast as the water moves downstream. This can often be seen at a stream bank.

This special "Science For You" feature is sponsored by Olin Corporation at Fingah Forest in co-operation with The Transylvania Times.



PAYDAY WEARIES?

Wary trying to stretch your budget every payday deciding who to pay how much and still have some cash left for yourself? Our Bill Consolidated Loan Plan can help by paying off your bills and you make just one comfortable payment each month... many times for less than 1/2 what you're paying now. Turn your payday into the pleasure you expect it to be. Stop by and see us today.



42 WEST MAIN STREET BREVARD DIAL 883-8256

20% Down Will Hold Any Item Till Dec. 20th

Santa's Early Suggestions

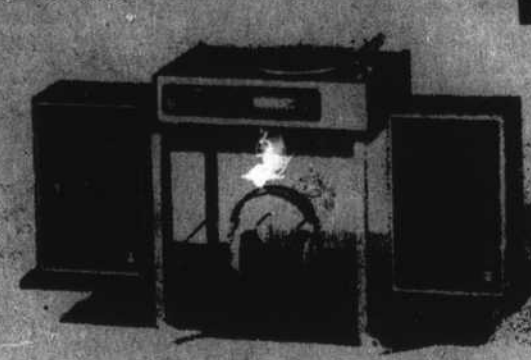
Lay-A-Way Now During This Big Pre-Christmas Sale At Public Catalog Showroom



GE COMPLETE DELUXE SOUND SYSTEM. FM/AM stereo receiver, 8 track tape player, 3 speed changer. The finest in stereo: 40 watts peak music power (20 watt EIA), individual controls, pin-point station selection, semi-resistant chassis with cooling, 9" turntable. Tape player allows continuous music or manual selection, channel lights, 21x12x8" air suspension speakers each have 8" woofer, two 3" tweeters. Equipped for Quadraphonic (Ambience) speaker system. Wt. 63 lbs.

G.E. No. 205 Retail \$259.95

Now \$205.97



GE COMPLETE STEREO SOUND SYSTEM. Deluxe components throughout. FM/AM stereo receiver with fine tuning aid, 8-track cartridge tape player, 3-speed automatic changer, diamond stylus, hinged dust cover. Automatic or manual 8 track program selection. 14 watts peak music power (7 watts EIA music power), 8" woofer and 3" tweeter in each enclosure. Extra jacks, control center 19x11x10 1/2". Enclosures 17x11x7". Comes complete with DS900 stand and H-22 stereophones. Wt. 78 lbs.

Retail \$239.95

Special \$184.97



GE 8-TRACK PORTABLE RADIO. Receiver FM/AM/PS (HD/PS (H)/Stereo). Hear police, fire, marine, continuous government weather in many cities, plus other public service broadcasts, also sports and your favorite FM or AM stations. Scratch control. Uses 4 "AA" batteries (not incl.) or AC. Built-in power cord. 100% 2 1/2". Wt. 3 1/2 lbs. #88907

Retail \$49.95

Special \$37.57



GE STEREO COLOR MODULES. Solid state amplifier, shock-mounted 3-speed automatic changer, 3" turntable shuts off automatically. Ceramic cartridge has diamond stylus. Jacks for Stereophone. Polystyrene cabinet with dust cover; 4" dynamic speakers in 10 1/2 x 10 1/2 x 4 1/2" enclosure. Sh. wt. 28 lbs.

Retail \$61.95

Special \$47.17



RP3122 Mickey Mouse Phonograph Blue and White

Retail \$25.95

Special \$23.96

The low, sculptured styling of this GE FM/AM clock radio will add that special touch to your bedroom. A timed appliance outlet that turns on a coffee maker or other appliance as it wakes you, a sleep switch for automatic radio shut-off, a Snooze-Alarm* clock for that extra 40 winks—all add up to a truly versatile unit you can enjoy all day long.

Retail \$32.95

Special \$26.36

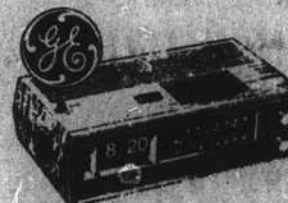


C4330 FM/AM Clock Radio with 4-Function Snooze

Tastefully styled in a low, contemporary look, this General Electric FM/AM Digital Radio fits neatly on night stand or table. The lighted digital clock gives precise, easy-to-read time. You wake to music or to music and gentle electronic tone alarm. The 24-hour alarm lets you set alarm in the morning for the following morning. This one has everything you need in a clock radio.

Retail \$49.95

Special \$38.97

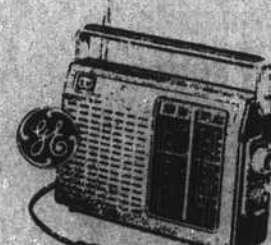


C4331 FM/AM Clock Radio

Now listen to your favorite TV program anywhere you go. This new GE portable plays TV audio as well as FM/AM broadcasts. Listen to your favorite TV news show, talk show, hbst, sports announcer, or "soap opera"—all while away from your TV set. Receives TV VHF channels 2-13. Plays on either batteries or AC power.

Retail \$47.95

Special \$34.36

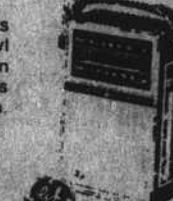


P4930 FM/AM Portable Radio with TV band

GE's rugged portable offers you the style everyone wants in an FM/AM personal radio. Its attractive, rugged vinyl covered case will go anywhere a radio can go. A built-in cord lets you play the radio on regular house current as well as batteries. 6 IF tuned circuits for improved reception.

Retail \$32.95

Special \$26.36



P5177 FM/AM Portable Radio

Here's the truly all purpose portable 8-track stereo tape player. Plays 8-track cartridges for continuous music. It operates on house power, on batteries, or from an automobile cigarette lighter adapter. Play it anywhere. The speakers are detachable to give you exciting stereo sound.

Retail \$62.95

Special \$50.36



88816 Eight-Track Portable Tape player with 3-Way Power

This compact cassette recorder from General Electric has all the desired portable cassette features: built-in condenser microphone, push button controls, three-way power capability and automatic end-of-tape shut-off. Carry it anywhere with the convenient hide-a-way handle. It's a GE quality cassette recorder at an attractive price.

Retail \$42.95

Special \$35.17



88845 Portable Cassette Recorder with Built-in Condenser Microphone 3-Way Power Capability Auto Stop

20% DOWN WILL HOLD ANY ITEM UNTIL DEC. 20th

Public Catalog Showroom

7th Ave. East, Hendersonville

OPEN 9:00 TO 6:00

MON. AND FRIDAY NIGHTS 9:00 TO 9:00 SUNDAY'S 1:00 TO 6:00