

# Rosman Swimming Pool Has Priority

—Continued From Page One  
the following requests:

1. Recreation - \$160,000
  - Pool for Upper Transylvania County
  - All-purpose courts
  - Park on old tannery property
  - Pisgah Mills property purchase for recreational facilities
2. Public Works - \$100,000
  - Water System for Rosman
3. Community Improvements - \$60,000
  - Existing Community Center improvements
4. Acquisition of Land - \$200,000
  - Purchase of 8 acre downtown tract.

man Bill Ives that the county appropriate \$2,500 to assist the school board in piping the ditches at Brevard Elementary School.

Commissioner John Folger questioned the need for the funds since there are several thousands of dollars of unexpended bond funds.

Mr. Ives said that he had suggested this to School Board Chairman Gene Morris, but apparently they did not wish to expend bond funds on this project. The appropriation failed for lack of a motion.

## Olin Plans 170 Layoffs

—Continued From Page One  
employees at Pisgah Forest.

"We are now working on the details of the layoff. Affected employees will be notified next week and given information regarding unemployment compensation, insurance, the Thrift Plan, paychecks, vacation pay, etc.

"We have tried to avoid a layoff as long as possible — perhaps longer than we should. We deeply regret the need for one, but we can no longer weather this economic storm without reducing production and other costs. We sincerely hope that no further major reductions will be necessary and that business will improve soon so that everyone can be at work before very long.

"You can rest assured that we will do everything we can to make that happen as soon as possible. In the meantime, I earnestly solicit the cooperation of everybody to watch costs and maintain and improve our efficiencies in order to reduce the need for more drastic cost-cutting measures."

When you think of prescriptions, think of VARNER'S adv.

When you think of prescriptions, think of VARNER'S adv.



Trees are one of North Carolina's most scattered over the state where the harvested valuable renewable resources. Large processors trees are collected. (N. C. State University have buying stations, like this one near Oxford, Photo)

## Mrs. Kersh Nursing Head

—Continued From Page One  
of Science Degree in Nursing from Cornell University. Her graduate study included courses in cardiac nursing.

She has been supervisor of the Cardiac Care Unit and director of inservice education at Transylvania Community Hospital for several months. She will continue as education director.

Mrs. Kersh is vice president of the Women of St. Philip's Episcopal Church; a member of High Hills Garden Club; the American Association of University Women; and the hospital auxiliary. She resides at Cleveland Place.

She and her husband are the parents of four children.

### IN MEMORY

In loving memory of Mrs. Florence Johnson:  
Memories of the one we've loved still cast their gentle glow  
To grace our days and light our paths wherever we may go  
Helen & Luvenia  
M 3-3-ltp

When you think of prescriptions, think of VARNER'S adv.

# 1040 U.S. Individual Taxpayers Ask IRS

This column of questions and answers on federal tax matters is provided by the local office of the U. S. Internal Revenue Service and is published as a public service to taxpayers. The column answers questions most frequently asked by taxpayers.

**Q.** The union I belong to just went on strike. I'm receiving unemployment payments now from a fund to which I contributed. Are these payments taxable?

**A.** Unemployment benefit payments you receive from a fund to which you voluntarily contribute, whether union established or established as a private, nonunion fund, are income only to the extent that they exceed your payments to the fund.

**Q.** My sister and I just started a joint savings account. Who pays the tax on the interest on our savings?

**A.** If two or more persons hold a savings account, bonds or other interest-producing property as joint tenants, tenants in common, or tenants in common, the interest is considered received by each person to the extent that person is entitled under local law to a share of such interest. Each owner will report his or her share of such interest under the same method, whether cash or accrual, that he or she uses to report income.

**Q.** Can I exclude the first \$100 of dividends I received as a result of shares I bought in a real estate investment trust?

**A.** No. Ordinary dividends received by shareholders of a real estate investment trust are nonqualifying dividends.

They are included in the dividends reported on line 10a of Form 1040 or 1040A, U.S. Individual Income Tax Return. However, they do not qualify for the \$100 dividend exclusion claimed on line 10b.

**Q.** What does an IRS service center do?

**A.** The functions of IRS service centers are to process tax returns and related documents and to maintain accountability records for Internal Revenue taxes collected within their respective regions. Typical activities include the processing, analysis, and accounting control of income tax returns, estimated tax returns, wage and excise tax returns, corporation tax returns, income information documents, and mailing of income tax forms to individual taxpayers. Service centers also plan, direct, and administer assigned Audit functions.

### "BABY" DOLL

Participants in a Red Cross class for expectant parents in Union County now have a "baby" doll to practice bathing, holding and diapering.

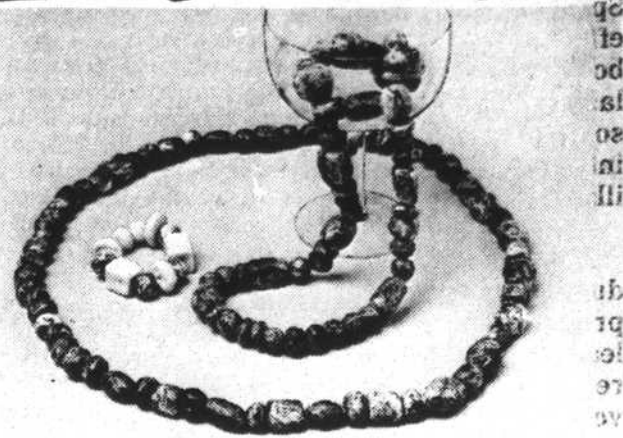
### REQUEST FOR BIDS

The Transylvania County Board of Commissioners will accept bids on a mini-computer for the county accounting office; bids to be opened at the regular commission meeting on Monday, March 10 in the county administration building, 28 E. Main Street, Brevard, N. C. Specifications are on file and bids will be accepted in the accounting office at the above address. All bids must be accompanied by a five per cent bid bond, and the county commissioners reserve the right to reject any and all bids.

M 3-3-ltc

Transylvania Bd. of Commissioners

# Dye Crafts



## Marbled Clay Beads

The clay for these bead necklaces and bracelet wasn't dug from the hillside or rocky shore. You make it in your own kitchen. The recipe given for Creative Clay is enough to make five bead necklaces, each about 30 inches in length.

**Supplies:** Argo corn starch, baking soda, Rit powder dyes, strong thread or elastic thread, clear plastic spray.

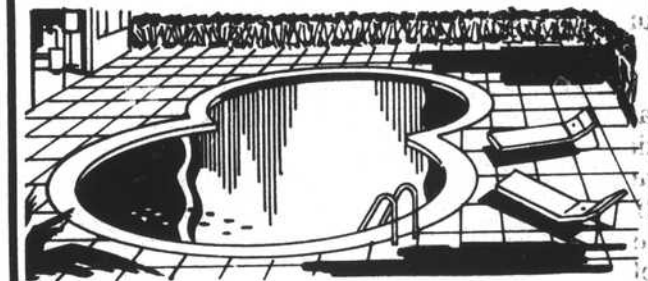
**General directions:** In a saucepan, stir together 1 cup corn starch and 2 cups (2 1/2 pound box) baking soda. Mix in 1 1/4 cups cold water until smooth. Cook over medium heat, stirring constantly, until mixture reaches a slightly moist mashed potato consistency. (Mixture will come to a boil, then start to thicken first in lumps and then in a thick mass; it should hold its shape when piled.)

Turn out on a plate and cover with a damp cloth. When cool enough to handle, knead like dough. Divide into fifths; tightly cover clay not being used to prevent it from drying and hardening. Partially knead about 2 teaspoons powder dye into each portion of clay. Shape beads by hand forming clay into circles, discs, ovals, squares and rectangles. Make holes through each for later stringing with a rounded wooden pick, wire or needle. Allow beads to completely dry, turning occasionally, at room temperature on a protected surface.

When dry, sand any rough edges and string together as desired using double thickness of thread. Use elastic thread for bracelets. Add several coats of clear plastic spray for a shiny gloss.

WOULD YOU LIKE YOUR OWN SWIMMING POOL AT GREAT SAVINGS TO YOU A NATIONAL MANUFACTURER AND LOCAL BUILDER

NEED DEMONSTRATION SWIMMING POOL SITES NOW



WILL BUILD AT COST+

CALL **RANDELL BRYSON** GENERAL CONTRACTOR  
Route 1, Pisgah Forest, N. C. 28768  
PHONE 877-3144

## GOODWILL MOTOR CO., INC.

Pontiac-Buick

220 S. Broad St.—Dial 884-4111  
Brevard, N. C.

## GOOD USED CARS

"SAVINGS UP TO \$300.00"

- R75-09—1974 Buick Century Coupe, Black Color. Loaded! \$4099.00
- R75-06—1974 Jeep Renegade With White Wall Tires \$4050.00
- P74-43—1974 Pontiac GTO, Lots Of Extras \$3295.00
- R74-33—1973 GMC 1/2 Ton Pickup, Automatic \$3095.00
- D75-02—1973 GMC 1/2 Ton 4 Wheel Drive \$3295.00
- R75-08—1973 Jeep Pickup 4500, Automatic Transmission, Quadra-Trac \$3195.00
- 74-117D—1972 Plymouth Road Runner, Automatic Transmission \$2095.00
- R74-10—1972 Pontiac Sprint, Standard Transmission, Low Miles \$2295.00
- R75-04A—1972 Chevrolet Vega Hatchback, Standard Transmission. \$1495.00
- 75-37B—1971 Chevrolet Vega Hatchback \$1295.00
- P74-41—1970 Pontiac Grand Prix, Sharp - Beautiful \$1995.00
- R74-34—1970 Pontiac LeMans Sport Coupe \$1725.00
- 75-19A—1968 Buick LeSabre 4 Door Sedan. One Owner \$895.00
- R74-08B—1965 Ford 2 Ton Cab & Chassis \$999.00

What a variety and there are many others to choose from. Buy with low rate financing and insurance is available. So come on down!

Low Rate Financing  
And Insurance Available



T&M 3-30-tfc

## Payroll Savings. Security on the installment plan.

You make time payments on practically everything. So why not make a few on your hopes and your dreams?

All you have to do is sign up for the Payroll Savings Plan where you work. Then an amount you specify is set aside from your paycheck and used to buy U.S. Savings Bonds.

You won't miss the money. And you'll get a little richer every payday.

So donate part of your paycheck to the most deserving cause in the world: your future.

Now: E Bonds pay 6% interest when held to maturity of 5 years (4% the first year). Lost, stolen or destroyed Bonds can be replaced if records are provided. When needed, Bonds can be cashed at your bank. Interest is not subject to state or local income taxes, and federal tax may be deferred until redemption.



Take stock in America. Join the Payroll Savings Plan.

A public service of this publication and The Advertising Council.

# WPNF PROUDLY PRESENTS ACC TOURNAMENT BASKETBALL

MARCH 6th OPENING ROUND  
1:15 p.m. UNC vs. Wake Forest  
3:15 p.m. Clemson vs. Duke  
7:45 p.m. N. C. State vs. Virginia

MARCH 7th SEMI-FINALS  
6:45 p.m.  
8:45 p.m.

MARCH 8th ACC CHAMPIONSHIP  
8:15 p.m.

These Games Are Brought To You By

- ★ ELDRIDGE MOTORS
- ★ CHARLIE'S RECAPPING
- ★ PISGAH FISH CAMP
- ★ NORRIS HARDWARE
- ★ PABST BLUE RIBBON BEER

Keep Your Radio Dialed To 1240  
And Follow The Nationally Ranked  
Tar Heels Of North Carolina!

Stay Tuned To Your Local Radio Station  
For The Best Entertainment And Sports  
1240 ON YOUR DIAL

