

REPORT FROM
The
Transylvania County School System

A Weekly Column

By - Richard Voso

There are times when it seems right to sit back and reflect, to take stock, before proceeding on. This time of year appears to be the right time for a pause; maybe its the rain, or the fact that spring is just around the corner with its burst of vigorous activity. Whatever the cause, a look back is in order before moving on.

The past few weeks' activities in our schools give a good indication of the course we are taking. Much has taken place, most of it future oriented.

Open house was held at the new Brevard Elementary and the new Brevard Middle Schools. Thousands of area residents had the opportunity to tour these schools and see for themselves the facilities the youth of our county will be using for the next 20, 30 or more years.

Visitors to these buildings, and the new Rosman Elementary building, saw evidence of the work being done by dedicated staff members as well as the instructional materials and equipment provided by the Board of Education.

The construction of the new high school building at Rosman and the new

vocational building at Brevard High again indicates a commitment to the future.

Recent newspaper articles have publicized the pursuit of excellence by school staff and students; a drama group won first prize in regional competition, vocational students took numerous prizes in district competition and athletes competed and won in regional tournaments.

At the present time mathematical students are preparing for competition at Western Carolina University while musicians are putting the finishing touches on performances for concert band and choral group competition.

Last week an ad hoc committee of citizens met to inform school authorities of their concerns about the schools. The information gathered at this meeting will become the basis of a widely circulated community questionnaire.

Upon reflection, our schools seem to be working hard to prepare students for their future roles in society. A key aspect of the preparation includes the development of a goal of excellence in performance in a competitive world.

The school board is sup-

porting the instructional program through the provision of up to date facilities and equipment. And the schools are listening to the community.

It will soon be time again to move on and plan the business of educating the youth of our county in the years to come. The chances are that the planning will be better because we took time to stop; time to see what we have done and time to talk with the community we serve.

NOTICE OF A PUBLIC HEARING ON THE DESIGN FOR US 64 FROM ROSMAN TO THE MULTILANE SECTION WEST OF BREVARD

Project 6.801822 Transylvania County

The above public hearing will be held on March 26, 1975 at 7:30 p.m. in the County Court House in Brevard, N. C. The design, the right-of-way requirements and procedures, relocation advisory assistance and State-Federal relationship. The hearing will be open to those present for statements, questions, comments and or submittal of material pertaining to the proposed design. Additional material may be submitted for a period of ten days to Mr. George E. Wells, P. E., Manager of Highway Design, North Carolina Department of Transportation, Division of Highways, P. O. Box 25201, Raleigh, N. C. 27611.

The proposed design varies from a 24' road with climbing lanes to two 24' lanes with a grassed median. From existing US. 64 east to SR 1329 will be one at 24' with climbing lanes with right-of-way for future 2 at 24' with median. From SR 1329 to SR 1337 will be one at 24' on right-of-way for a future 2 at 24' with a grassed median. From SR 1337 to the end of the project will be 2 at 24' median. The right-of-way will be variable to contain the construction and will be full control of access with ingress and egress at designated intersections. The location is the same as presented at the corridor public hearing on September 10, 1970.

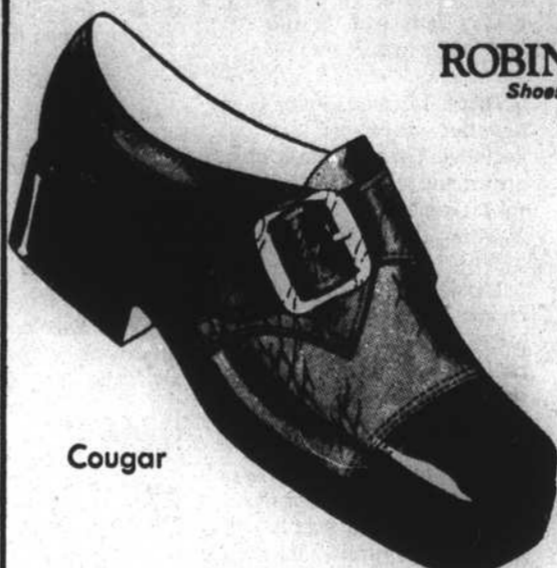
A set of prints of the proposed design and a copy of the Draft Environmental Impact Statement are available for public review and copying at the District Office of the North Carolina Department of Transportation, Division of Highways on N. C. 191 near Mills River. Copies of the Statement may be requested from the Planning and Research Branch of the North Carolina Department of Transportation, Division of Highways, P. O. Box 25201, Raleigh, N. C. 27611.

North Carolina Department of Transportation
2-27&3-20-2tc

Robin Hood.

Action Shoes for Active Children

Pat's Jr. SHOE WORLD



ROBIN HOOD.
Shoes for Boys

Cougar

Cougar... an attractive two-tone textured side buckle slip-on. Fire-brown... in B, C, D, & E widths

Sizes
12½-3 \$11.95
3½-6 \$12.95



Charger

All children's shoes are fitted with care

our nifty two-tone makes a thrifty buy



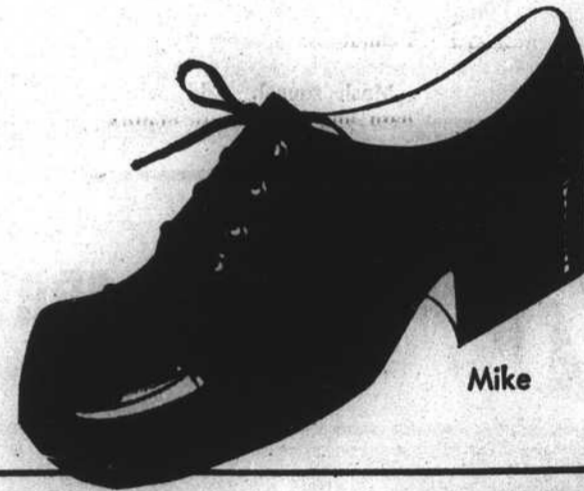
The Robin Hood two-tones. A strapped slip-on and tie oxfords priced so easy on your budget. They sport a new, tough-minded, man-made upper that's super flexible and wipes to a shine. Let your boy choose his favorite. All are backed by our expert fit.

Charger... a rugged lace-up shoe in two-tone textured leather. Burgundy & tan. B, C, D & E widths

Sizes
8½-12 \$10.95
12½-3 \$11.95
3½-6 \$12.95

Mike... a dressy lace-up in smooth leather. Brown & tan two-tone or blue & gray.

Sizes
12½-3 \$13.95
3½-6 \$14.95

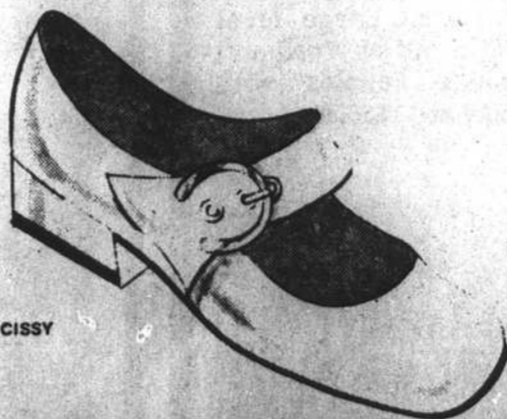


Mike

lets the shine of genuine patent brighten your daughter's day

ROBIN HOOD.
Shoes for Girls

Genuine patent. Shiny. Smooth. Beautiful to look at. Especially when it's paired with a favorite dress. Robin Hood styles this shoe with just the right trim. And we're bringing it to you backed by our fine fit and a budget-pleasing price.

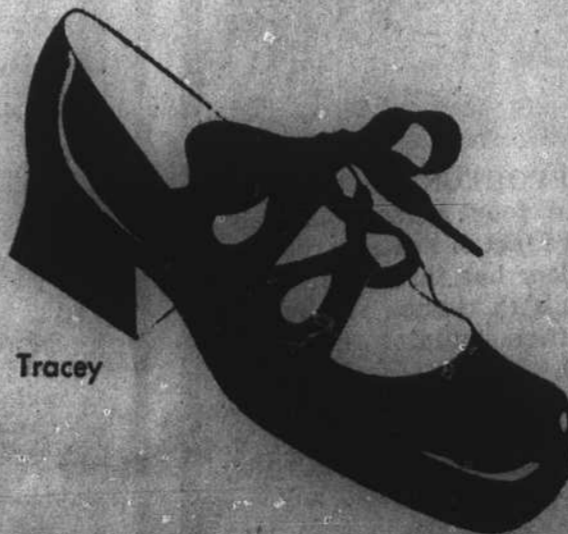


Cissy

Cissy... in black or white.

genuine patent. With flared strap, slanted toe and heel and elastic insert for perfect fit.

Sizes
5½-8 \$8.95
8½-12 \$10.95
12½-4 \$10.95



Tracey

Tracey... a feminine gillie lace-up in blue, white or black patent.

Sizes
5½-8 \$9.95
8½-12 \$10.95
12½-4 \$10.95

Pat's
In The College Shopping Center

DANCE! DANCE! DANCE!

TO

THE CONTEMPOS

At The V.F.W. Post

SAT. NITE, MARCH 22nd

9:00 P.M. Till 1:00 A.M.

Admission — \$5.00 Per Couple