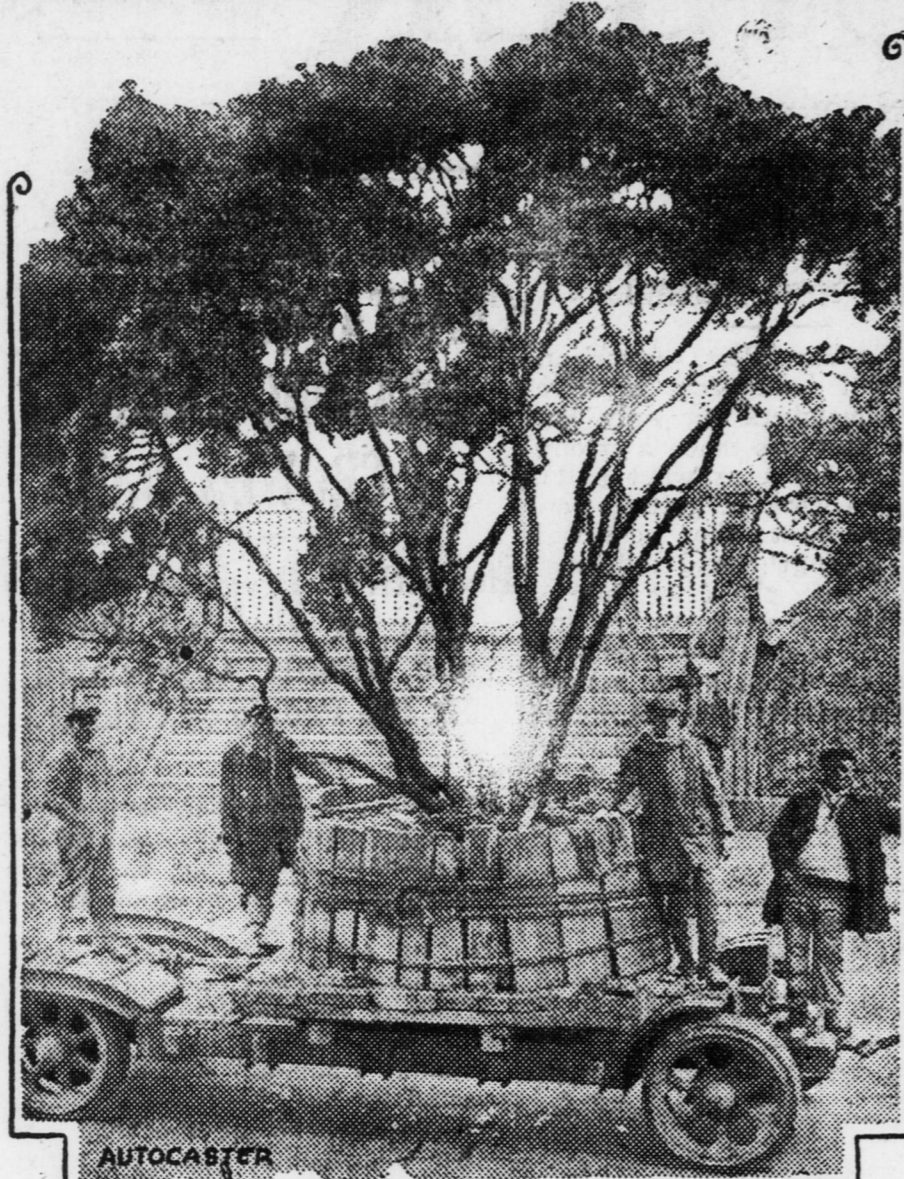


### Famous Tree Moves To Sacred Ground



If Daniel Webster, famous American statesman, should return to Washington looking for the shade tree under which he rested at his home there, he might be surprised to find it growing healthfully in another part of town. The tree, as shown in the picture, has been moved over to the Lincoln Memorial Grounds for preservation and given prominent place.

### ABOUT THE NATIONAL HIGHWAY

Comments By the Charlotte Observer—Compliments Forest City and Rutherfordton.

The highway from Rutherfordton that Mr. McBee is building to and through Chimney Rock and over the gap to a connection with the Buncombe hard-surfaced boulevard, is a very fine one of its class. It is sand-clay for the present, but surely we understood Chairman Page as saying that as it is a part of the highway from the mountains to the sea, it is to carry hard-surfaced finish. The new work is completed from Rutherfordton out about 10 miles with old and new surveys combined, and thence to Chimney Rock it has been graded and sanded and put in readiness for the roller. The entire road should be turned over to travel within two weeks, and then between Rutherfordton and Hickory Nut Gap we will have a road similar in construction and finish to the celebrated white sand-clay between Kings Mountain and Shelby. It is what is classified by the State as a "dependable" highway, to remain so until made permanent by asphalt and concrete. It is a reconstruction of the entire route and the public has been anxiously waiting word to jump on it. The topography of the section admits of no detour and until the roller gets by the traveler has to pull his way through deep sand, but the going is comparatively good unless it happens to be a rainy day.

On all the highways an almost unbelievably fine condition has been established since the State's system of maintenance came into operation. Sandclay roads that were formerly known to be good are now excellent, and it is all the result of the road scraper and the ditch cleaner.

And by the way, the traveler knows that he is approaching Hendersonville, by the 30-foot hard-surfaced boulevard he strikes some miles out and its bordering of a new setting of handsome summer homes. And he knows he is in Hendersonville when he encounters the side-walk heaps of building material, indicating a revival of building activities. The beautiful boulevard through the town is changing its identity by reason of the many handsome new structures going up. The same is to be said of Rutherfordton. The business part of that enterprising little mountain city is undergoing a transformation. A feature of structural work in Rutherfordton is hidden from public view. All the wooden buildings which occupied "back lot" position are being torn down and replaced with brick stores, garages and warehouses. Rutherfordton is in this way building up its waste spaces and concentrating its commercial enterprises. The addition to the Iso-Thermal Hotel is going to complete her sum of happiness for this year at least.

And the transformation of Forest City is another thing to talk about. Looks like the whole town has been built over and some architects with excellent ideas have had a hand in the work. Its heart has been given a concrete setting and in the center is a system of parking that is as pleasing as it is elaborate. There are three paneled parks and they look like the advertisement of a nursery. There are circles and squares of flowers set in between beds and clusters of spruce, arbor vitae, juniper and hemlock, pine and cedars of beautiful shape and of adult size. The three panels constitute a parking effect that is remarked upon by all visitors for its beauty. Forest City has a population with an eye for the beautiful. —Charlotte Observer.

#### HOMEY PHILOSOPHY

Don't it seem fine to get into your boat, lie face up in the sunlight an' drift down the stream of life without a care in the world? You pass hundreds of rocks, the eddies switch the boat from side to side an' get you by safely, maybe with here an' there a little scratch but not enough to set you worryin'. An' then you get it. Bump, an' over the falls you go. Boy, what a smash! If you have any thinkin' apparatus left you see where you tried to beat the game an' it didn't work out. Old Cap Nature says you've got to take hold of the oars an' row up stream if you want to land safely. Sometime's you've got to row mighty hard to make headway but you might as well tackle the job, because, there's no room for argument. Every river ends on the rocks or in the mudbanks and that's where the fellow lands who drifts down the stream.

## Studebaker

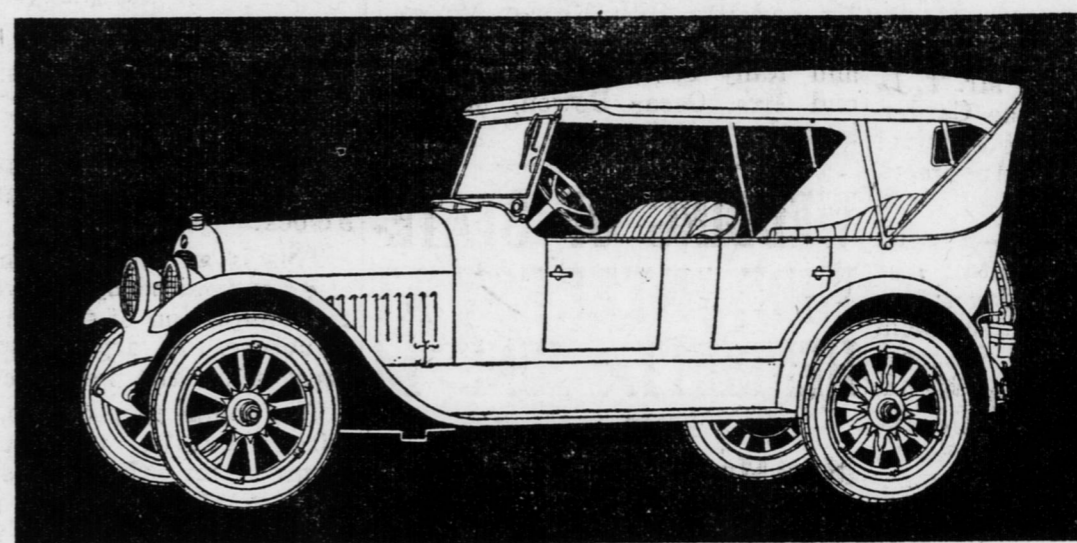
STUDEBAKER builds more six-cylinder cars than any other manufacturer because Studebaker builds them better. We can show you 84 definite points of superiority in the Special-Six over Studebaker's nearest competitor.

In times of close competition, merit wins. Today competition in automobiles is keener than it ever was, because people are

buying more carefully than ever. Studebaker increased its sales 29% in 1921, though the industry, as a whole, showed a falling off of nearly 45%. 1922, up to May 1st, shows a gain in Studebaker production of 143% over the same period of 1921.

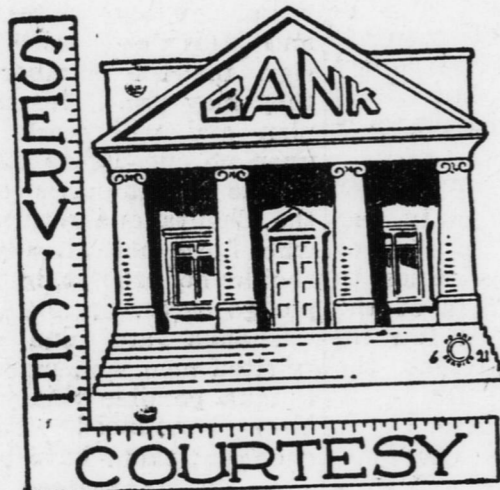
Studebaker sales records tell their own story. The buying public has declared for Studebaker's superiority.

Touring, \$1475; Roadster (2-Pass.), \$1425; Roadster (4-Pass.), \$1475; Coupe (4-Pass.), \$2150; Sedan, \$2350. All prices f. o. b. factory.



CAROLINA MOTOR CO.  
FOREST CITY, N. C.  
TATE'S GARAGE  
RUTHERFORDTON, N. C.

THIS IS A STUDEBAKER YEAR



### WHEN WE GIVE---

—honest service and courteous attention we have established plumb-lines as square as truth itself.

Service comes only when all parties concerned profit thereby, and it is the foundation upon which this institution is built.

We want you to get the habit of banking here. Every department—whether checking, savings, loans, mortgages or bonds offers just as good inducements as may be found anywhere. And more often—MUCH BETTER.

Once you GET AHEAD you've proved you HAVE A HEAD.

## Farmers Bank & Trust Co.

FOREST CITY, N. C.

Caroleen, N. C. Lattimore, N. C.



Good Job Printing at the Courier Office.

#### PROFESSIONAL CARDS

R. R. BLANTON  
Attorney  
Forest City, N. C.  
Office in Bank Building

J. A. WILKIE  
Insurance of All Kinds  
Real Estate Bought and Sold  
Forest City, N. C.

DR. FRANK R. WILKINS  
Dentist  
Over Moss-Reinhardt Furn. Store  
Next to P. O., Forest City, N. C.

SOLOMON GALLERT  
LAWYER  
RUTHERFORDTON, N. C.

Office Phone 179 Home Phone 21  
DR. J. S. DORTON  
Veterinarian  
Shelby, North Carolina

Dr. CHAS. S. McCALL  
Dentist  
Office over Farmers Bank.  
Forest City, N. C.  
Office Hours: 9 to 12; 1 to 5.

J. F. JUSTICE  
SURVEYOR  
Phone 60  
FOREST CITY, N. C.

M. L. Edwards G. W. Edwards  
EDWARDS & EDWARDS  
Attorneys-at-Law  
RUTHERFORDTON, N. C.

Office in Carpenter Building Opposite Court House. General practice of law in State and Federal Courts.

W. C. McRORIE  
Rutherford ton, N. C.  
C. O. RIDINGS  
Forest City, N. C.  
McRORIE & RIDINGS  
ATTORNEYS-AT-LAW  
Offices: Rutherfordton and Forest City, N. C.  
Will practice in all State and Federal Courts.

FOR SALE—Typewriter ribbons. Large selection. Priced right. Call at this office or sent by mail at one dollar. The Forest City Courier.

### 7,000 MILES OF SERVICE AFTER BEING RETREADED

This is the kind of service hundreds of our customers are getting from their tires after we have RETREADED them.

The difference in TIRE REPAIRING is well worth your investigation. Be sure it is done by expert repairmen, and you will get SERVICE you never had from your Tires.

WATCH your Tread-Worn Tires, DON'T throw them in the junk pile, SEND them to us, and see how your TIRE EXPENSES will be cut in half.

SEE Mr. Z. V. Costner, the owner, and driver of the Shelby & Rutherfordton Bus. He will bring your tires to us FREE OF CHARGE.

We PAY ALL TRANSPORTATION Charges from any point on the bus line. IT IS FREE.

## SHELBY RUBBER WORKS

SHELBY N. C.

J. R. & W. K. Misenheimer, Props.

## GROCERIES

CRUSADER FLOUR SILVER LAKE FLOUR  
ALUMINUM WARE GALVANIZED TIN TUBS  
WHITE HOUSE VINEGAR FRUIT JARS  
EXPORT SOAP GOOD CLEAN WHOLE RICE

#### CASH FOR EGGS

We will pay 25c per dozen for eggs. Bring them to us and get the cash.

## Jones Grocery Company

Forest City, N. C.

#### SEABOARD AIR LINE RAILWAY Arrival and Departure of Passenger Trains at Forest City, N. C.

Lv.	No.	Between	No.	Ar.
6:42a	34	Rutherfordton-Raleigh and Wilmington.	34	6:42a
x10:30a	109	Ellenboro-Rutherfordton	109	x10:30a
x11:20a	110	Rutherfordton-Ellenboro	110	x11:20a
12:06p	15	Monroe-Rutherfordton	15	12:06p
3:48p	16	Rutherfordton-Monroe	16	3:48p
7:00p	31	Wilmington-Raleigh and Rutherfordton	31	7:00

x Daily except Sunday. No. 16 connects at Monroe with No. 6 for Norfolk, Richmond, Washington and New York, and No. 11 for Atlanta and points West. Schedules published as information and are not guaranteed. G. W. LONG, Jr., Ticket Agent, Forest City, N. C. E. W. LONG, D. P. A., Charlotte, N. C.